

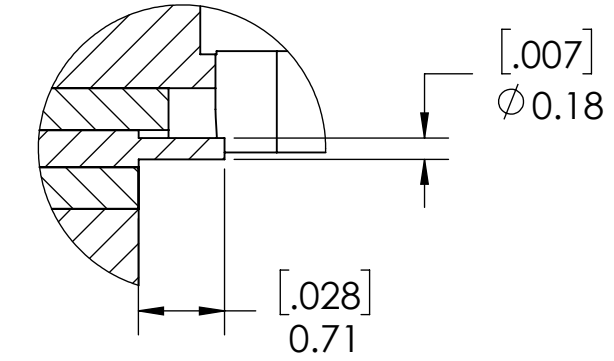
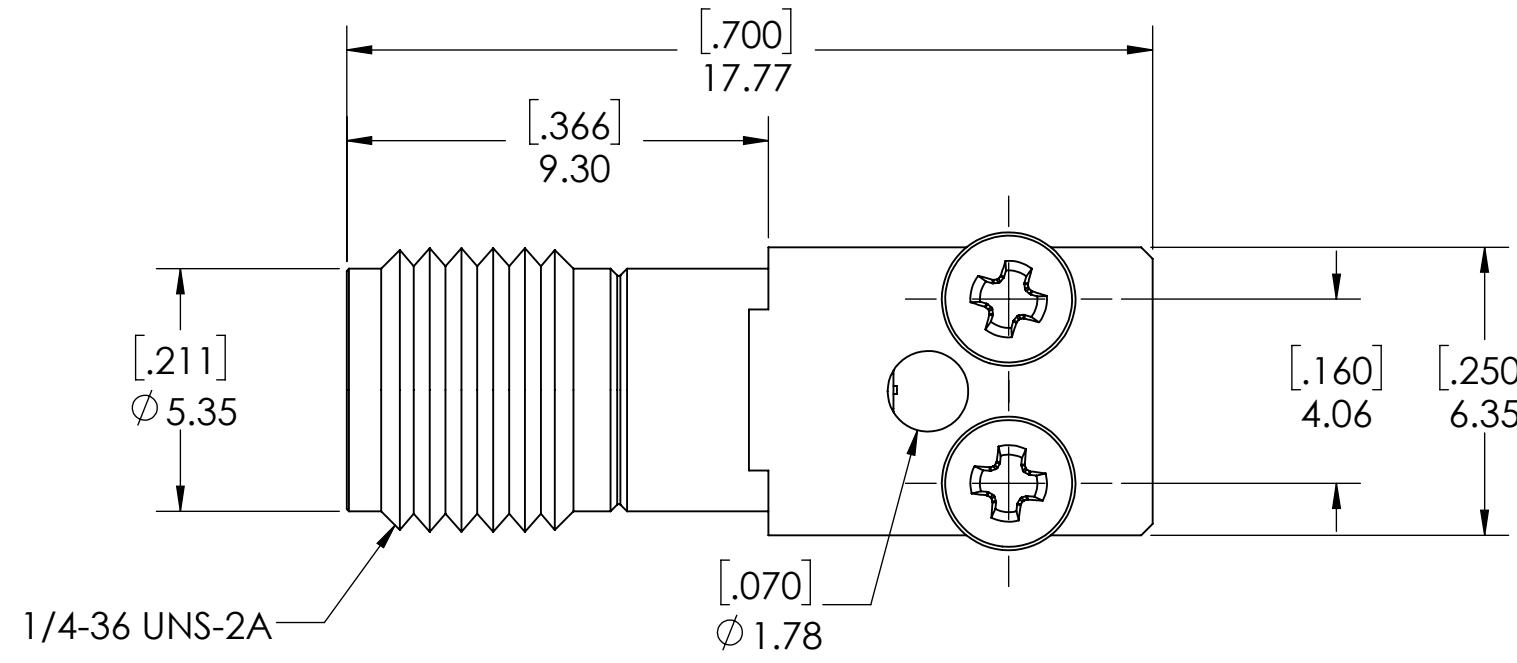
4

3

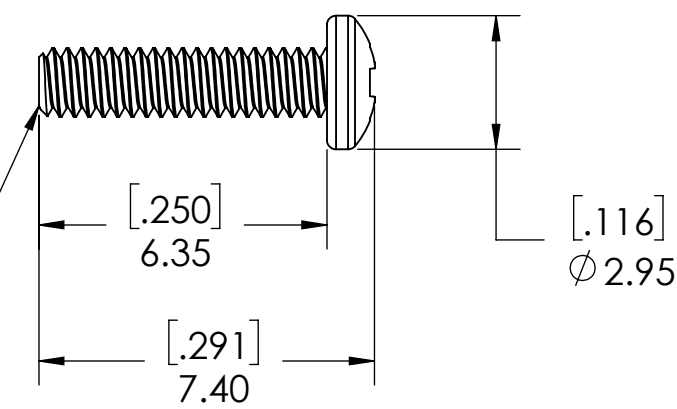
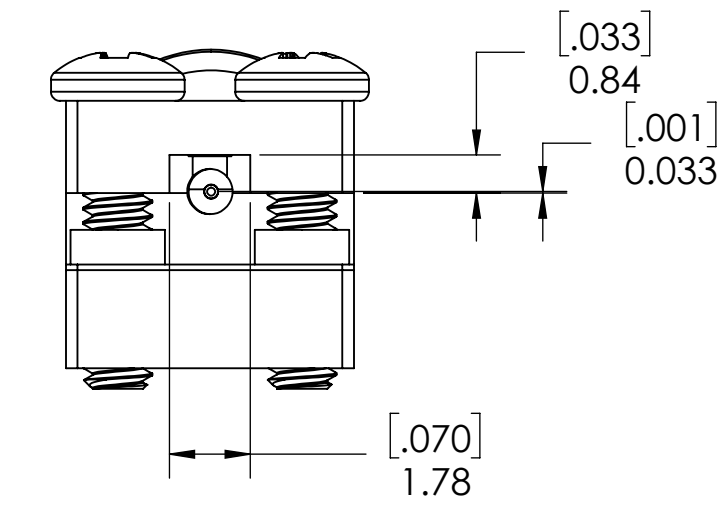
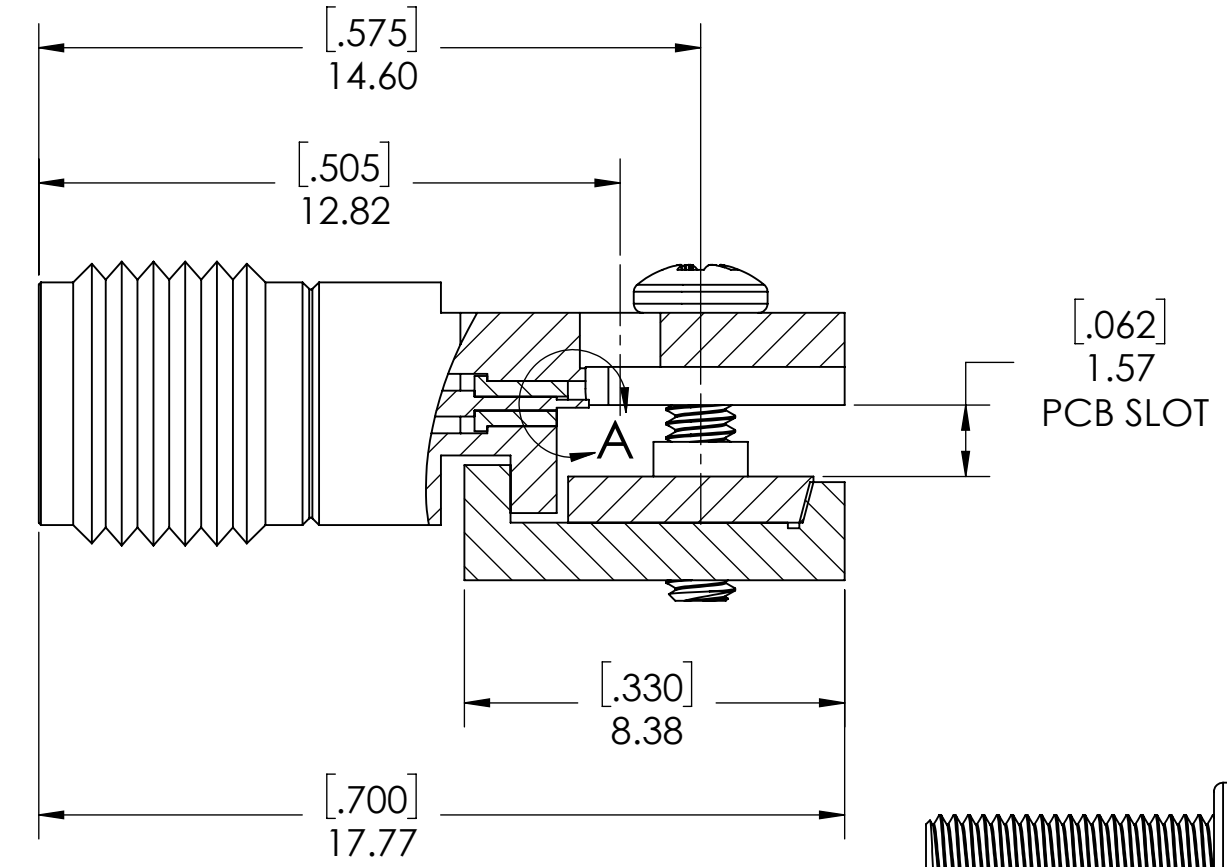
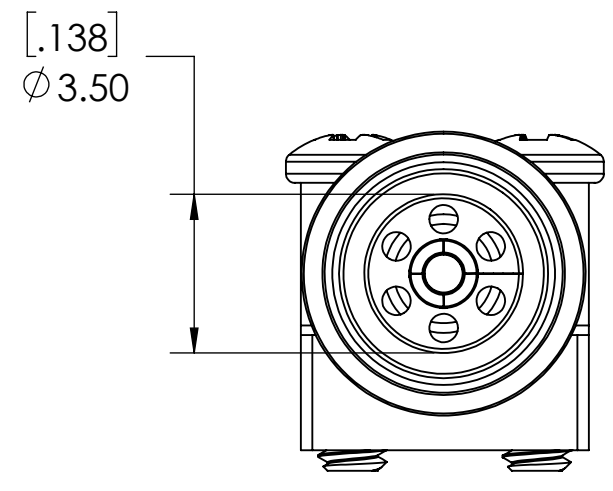
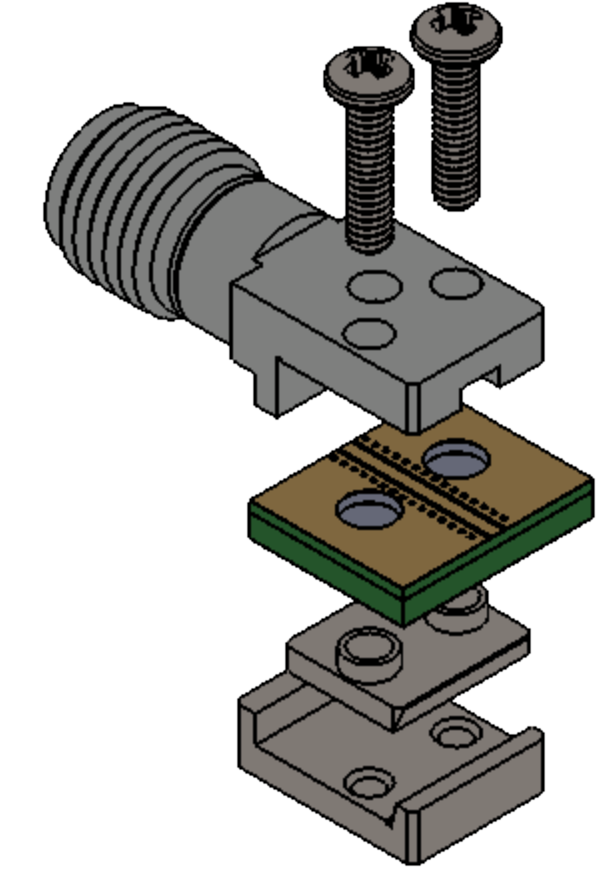
2

1

| REVISIONS | | | |
|-----------|-----------------|-----------|-----|
| REV. | DESCRIPTION | DATE | DWN |
| - | INITIAL RELEASE | 8/31/2020 | FY |



DETAIL A
SCALE 16 : 1



PROTECTION CAP

- NOTE(S):
1. These characteristics are typical and for reference.
 2. DYH: 58-20029-44070A
 3. See sheet 2 for PCB interface definition.

| MATERIAL(S) : | ELECTRICAL(S) : | MECHANICAL(S) : | ENVIRONMENTAL(S) : |
|--|--|---|---|
| Body/Screws: Stainless Steel Locking Block: Brass Center Conductor: Beryllium Copper Insulator: PCTFE, white RoHS Compliant Protective Cap: Soft PVC Color: White | Impedance: 50 Ohms Nominal Frequency Range: DC to 34 GHz VSWR: 1.30 max at 34 GHz Working Voltage: 500 V RMS max @ Sea Level Dielectric Withstand Voltage: 500 V RMS max. Insulation Resistance: 5000 megaohms min. Contact Resistance: Initial: Center Contact: 1.5 Milliohms max Outer Contact: 0.8 Milliohms max | Mating Characteristics: Interface per MIL-STD-348 Force to Engage & Disengage: Torque: 2 inch-pounds max Longitudinal Force: NA Connector Durability: 500 Cycles min. Permeability: Less than 2.0 mu. Center Contact Retention: Axial Force: 6 pounds min. Radial Force: NA | Temperature Range: -55 °C to +85 °C Moisture Resistance: MIL-STD-202, Method 103, Test Condition B Corrosion: MIL-STD-202, Method 101, Test Condition B Vibration: MIL-STD-202, Method 204, Test Condition A Shock: MIL-STD-202, Method 213, Test Condition 1 |

| FINISH(ES) : | APPLICABLE CARLISLE IT DOCUMENTS | TOLERANCES AND NOTES | APPROVAL | INITIALS | DATE | Dongguan City, Guangdong P.R. China 523533 TITLE Edge Launch, Narrow Body, Solderless, 3.5mm, Connector SCALE 8:1 SIZE SUB-DIRECTORY/ _OUTLINE/ DRAWING NO. TMB-E5F2-1L1-01 | | | | | | | | | | | | | | | | | | | |
|--|--|----------------------|--------------|--------------|------|--|----|----|---|--|-----------------|----|-----------|-------------------|--|--|-------------------|----|-----------|----------------|--|--|--|--|------------------------|
| Body/Screw: Passivated Locking Block: Nickel plating Center Conductor: Becu ,Gold Plating | <table border="1"> <thead> <tr> <th>WORK STANDARD</th> <th>PROD INSTRUC</th> <th>ASSY INSTRUC</th> </tr> </thead> <tbody> <tr> <td>NA</td> <td>NA</td> <td>NA</td> </tr> </tbody> </table> | WORK STANDARD | PROD INSTRUC | ASSY INSTRUC | NA | | NA | NA | EXCEPT AS NOTED THIRD ANGLE PROJECTION SCALE 8:1 DIMENSIONS ARE IN [INCHES] MM ANGLES ±2° .XX DECIMALS ±.063 .XXX DECIMALS ±.01 | <table border="1"> <tr> <td>DRAWN BY</td> <td>FY</td> <td>8/31/2020</td> </tr> <tr> <td>CHECKED BY</td> <td></td> <td></td> </tr> <tr> <td>DESIGN ENG</td> <td>PV</td> <td>9/26/2019</td> </tr> <tr> <td>APPR BY</td> <td></td> <td></td> </tr> </table> | DRAWN BY | FY | 8/31/2020 | CHECKED BY | | | DESIGN ENG | PV | 9/26/2019 | APPR BY | | | | | SHEET 1 OF 2 REV. - |
| WORK STANDARD | PROD INSTRUC | ASSY INSTRUC | | | | | | | | | | | | | | | | | | | | | | | |
| NA | NA | NA | | | | | | | | | | | | | | | | | | | | | | | |
| DRAWN BY | FY | 8/31/2020 | | | | | | | | | | | | | | | | | | | | | | | |
| CHECKED BY | | | | | | | | | | | | | | | | | | | | | | | | | |
| DESIGN ENG | PV | 9/26/2019 | | | | | | | | | | | | | | | | | | | | | | | |
| APPR BY | | | | | | | | | | | | | | | | | | | | | | | | | |

4

3

2

1

A

4 3 2 1

D

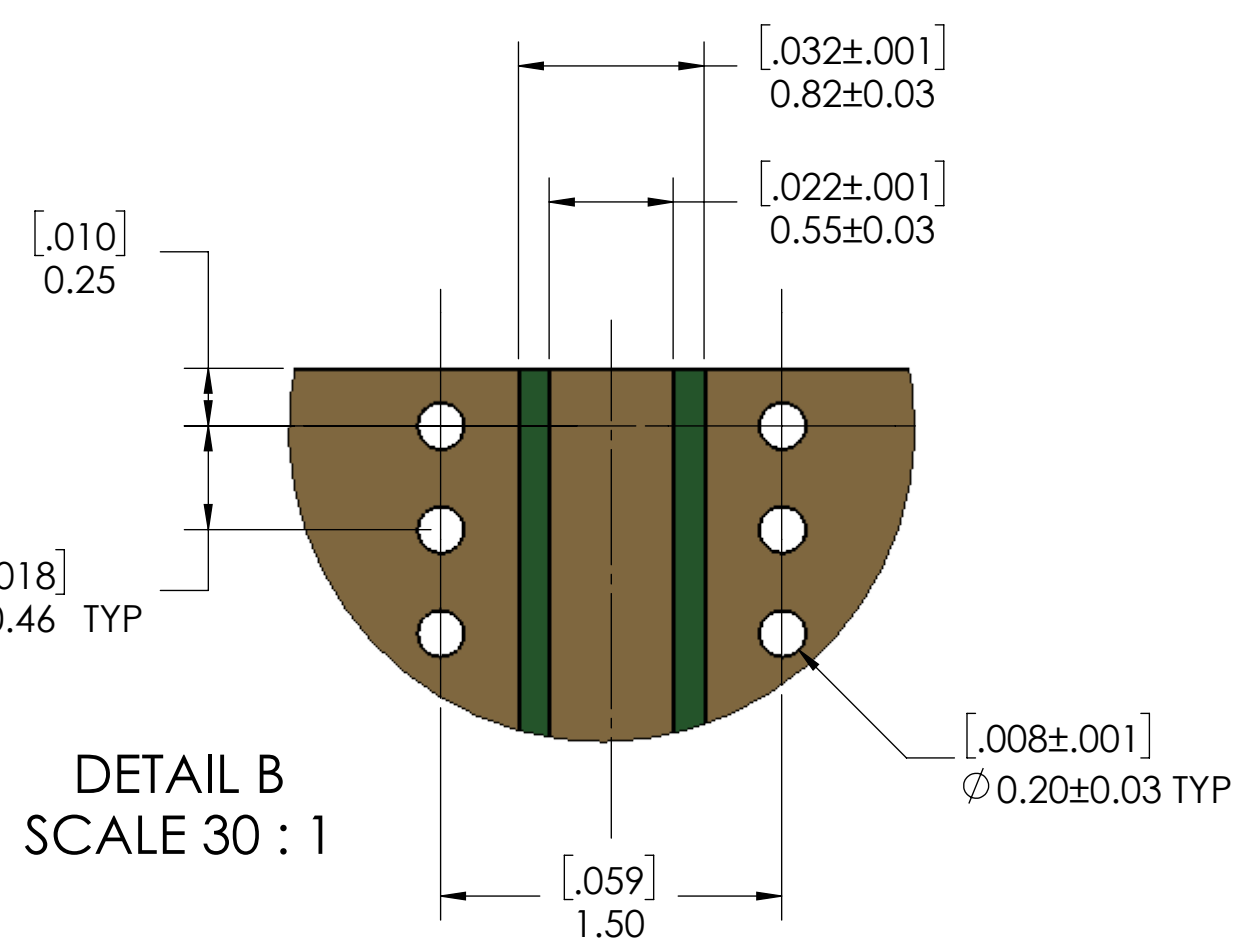
C

B

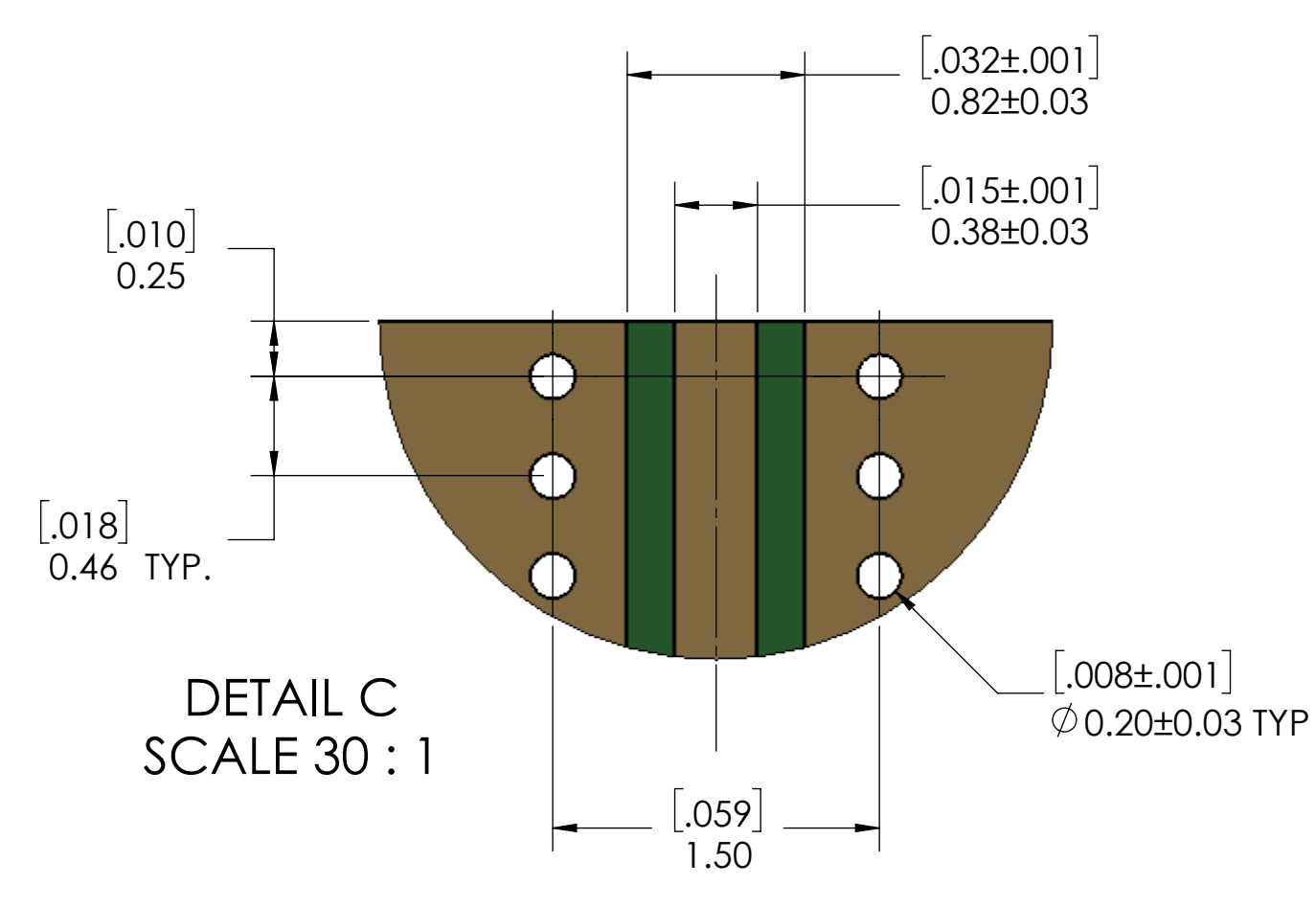
A

ENG-SW REV. E

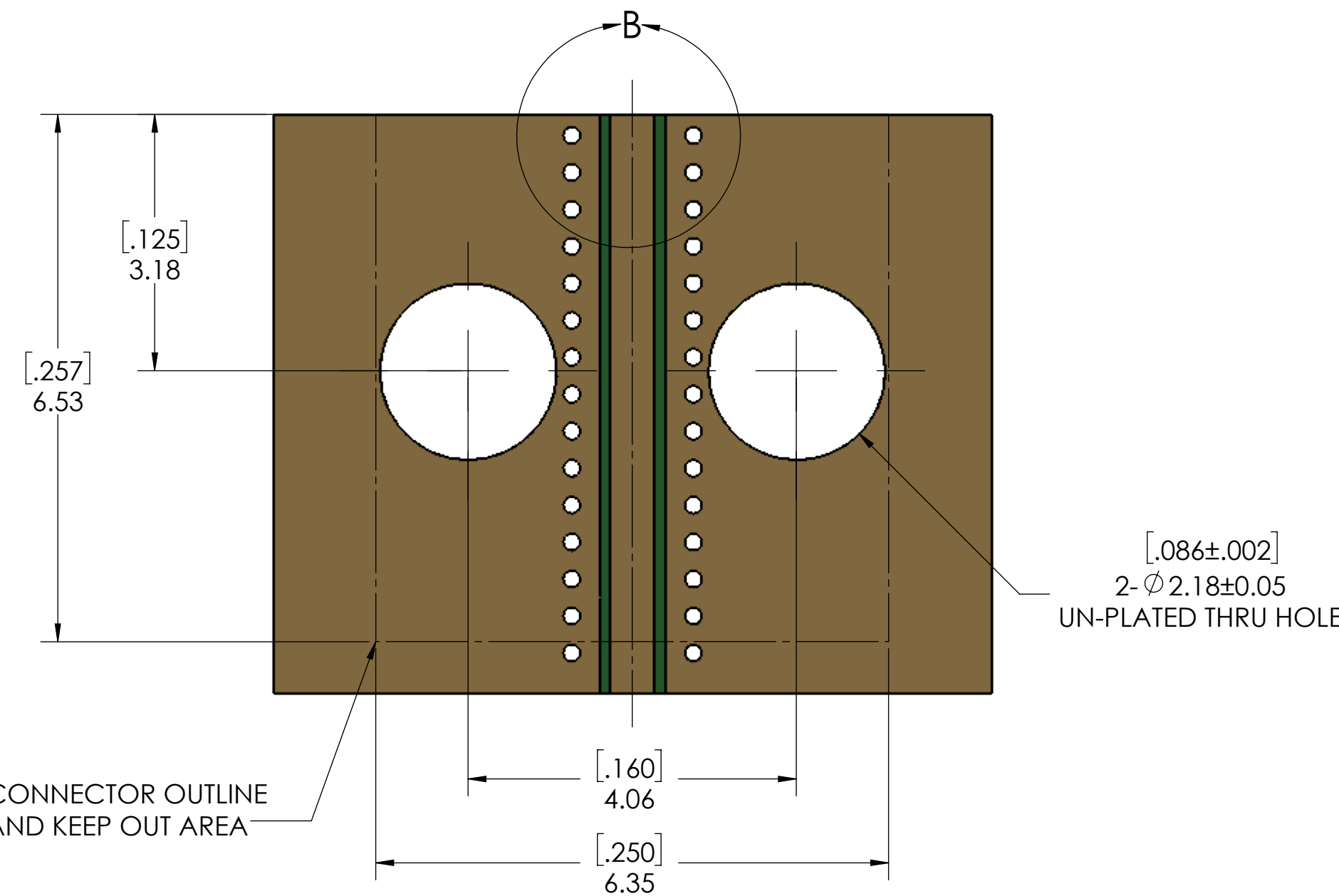
4



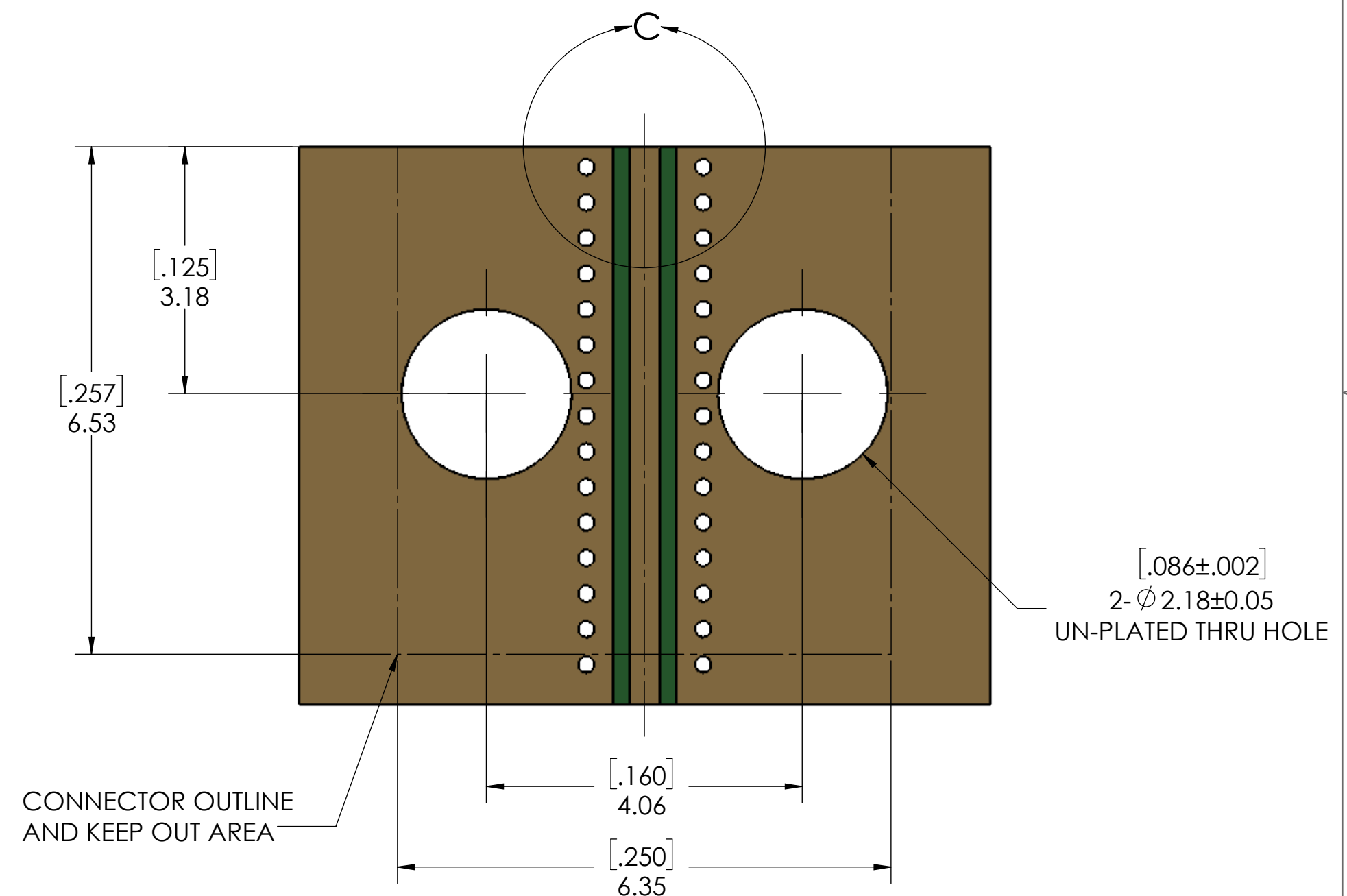
DETAIL B
SCALE 30 : 1



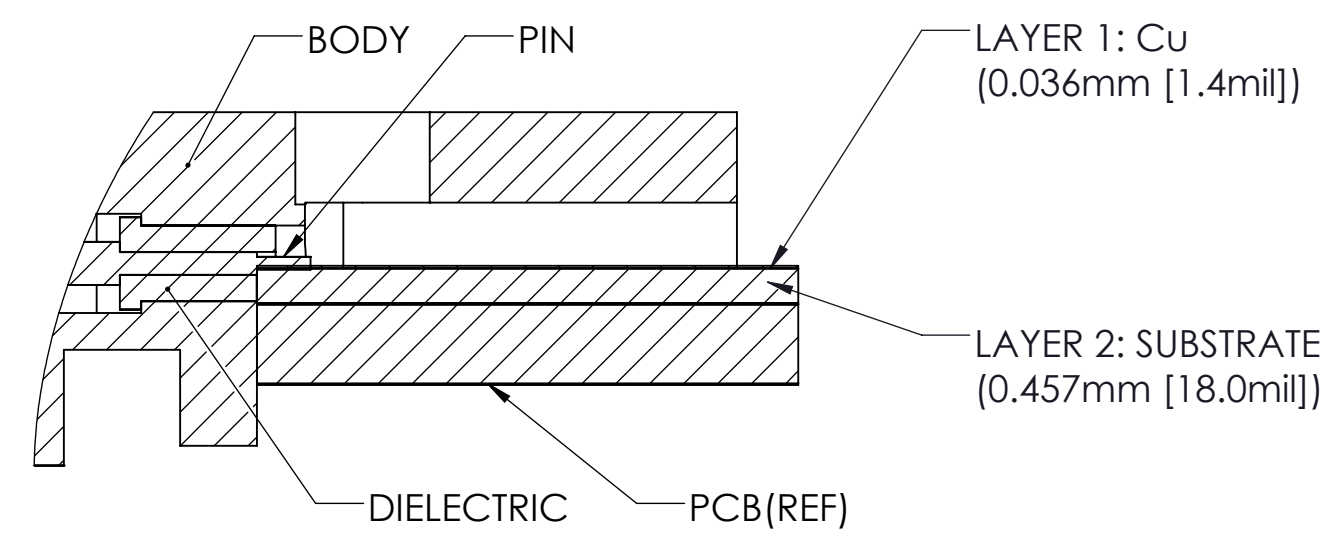
DETAIL C
SCALE 30 : 1



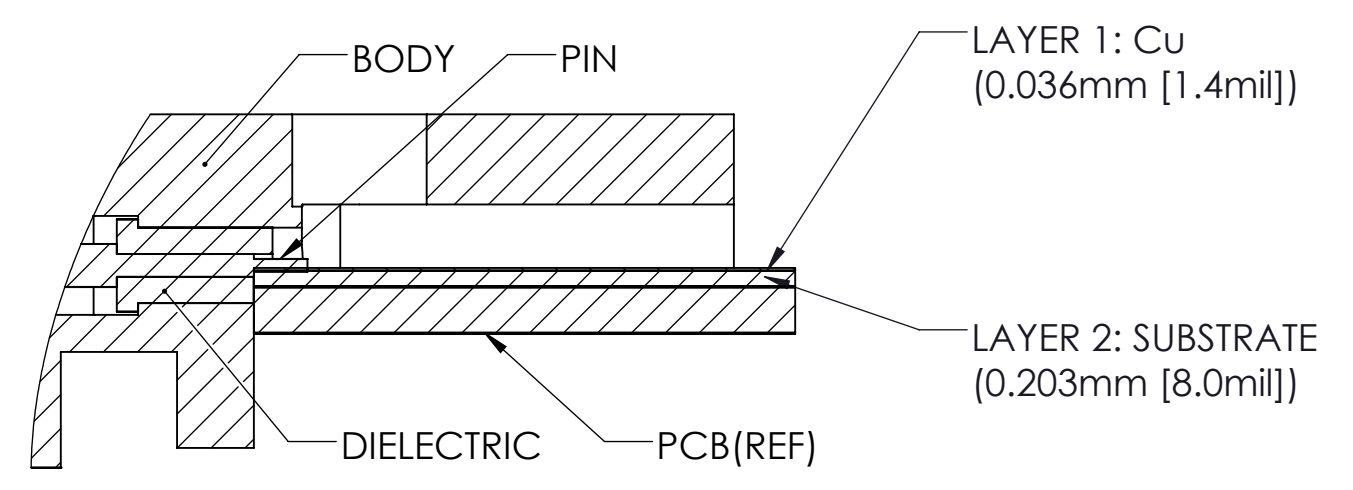
CONNECTOR OUTLINE
AND KEEP OUT AREA



CONNECTOR OUTLINE
AND KEEP OUT AREA



OPTION 1 : 0.457mm [18.0mil] THICK SUBSTRATE (LAYER 2)



OPTION 2: 0.203mm [8.0mil] THICK SUBSTRATE (LAYER 2)

PCB LAYOUT
(FOR REFERENCE ONLY)

| | | | |
|-------|----------------|------------------------|--------------|
| SCALE | SUB-DIRECTORY/ | | SHEET 2 OF 2 |
| 10:1 | | | |
| SIZE | CAGE CODE | DRAWING NO. | REV. |
| C | | TMB-E5F2-1L1-01 | - |

4

3

2

1

D

C

B

A

1