



698-960 & 1710-2700 MHz LTE WORLD BAND ANTENNA

**Part Numbers: 2367286-1, 2367286-2,
2367286-4, 2367286-5,
2367286-6**

FEATURES & BENEFITS

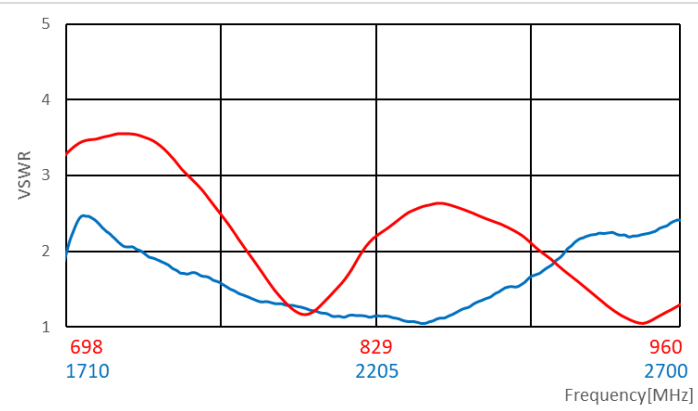
- Adhesive backing on the FPC simplifies mounting within the device
- Omnidirectional coverage
- Efficient design reduces power usage
- No matching components required
- Ground-plane independent design

SPECIFICATIONS

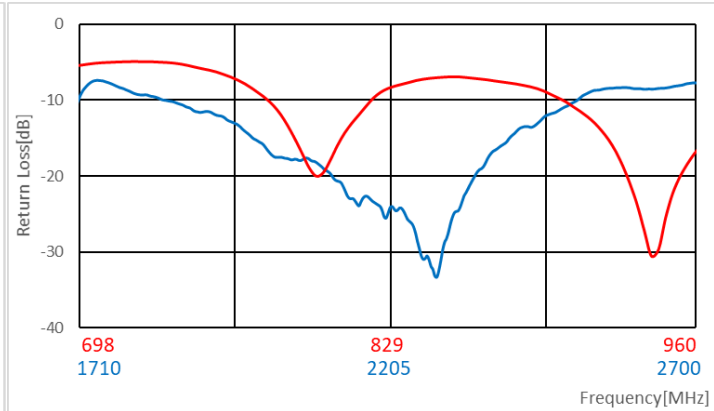
Frequency Range (MHz)	698-960	1710-2700
VSWR	< 3.6:1	< 2.5:1
Efficiency	55%	60%
Average Gain	-2.7dBi	-2.5dBi
Peak Gain	3.0dBi	3.0dBi
Power Handling	10 Watt cw	
Feed Point Impedance	50 ohms unbalanced	
Polarization	Linear	
Size	65 mm x 15 mm x 0.2 mm	
Weight	< 2.0 g	
Mounting	Adhesive Tape	
Mating Connector	MHF and MHF4L type, refer to page6	
Cable (coaxial)	1.13mm Dia. refer to page6	
Operating Temperature	-40 to +85°C	
Storage Temperature	-40 to +85°C	
Hazardous Materials	A certificate of conformance is available from the product page on TE website.	

RF DATA

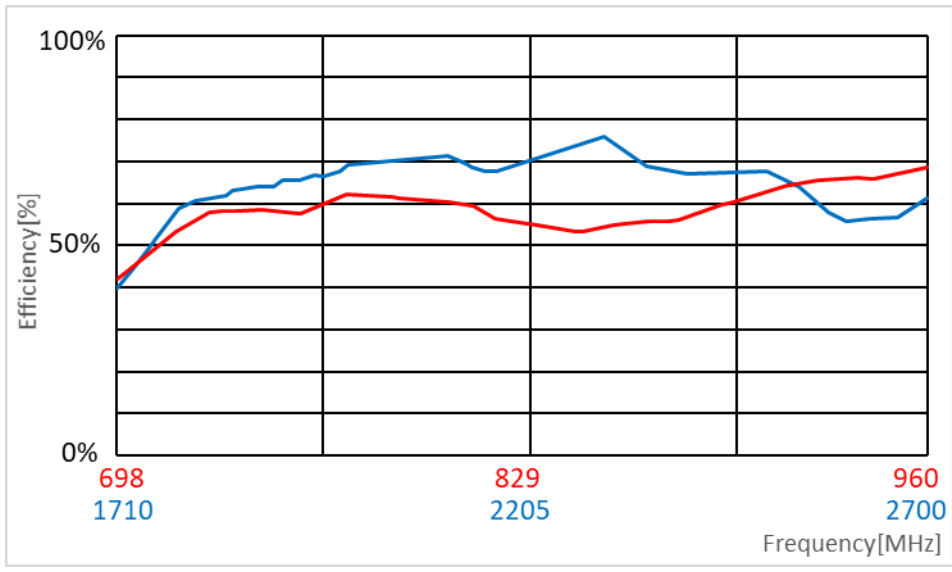
VSWR



Return Loss

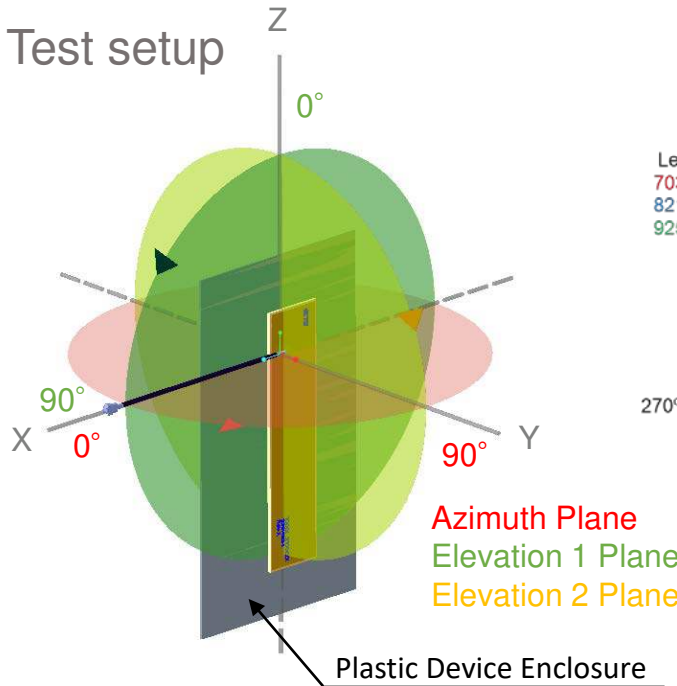


Efficiency

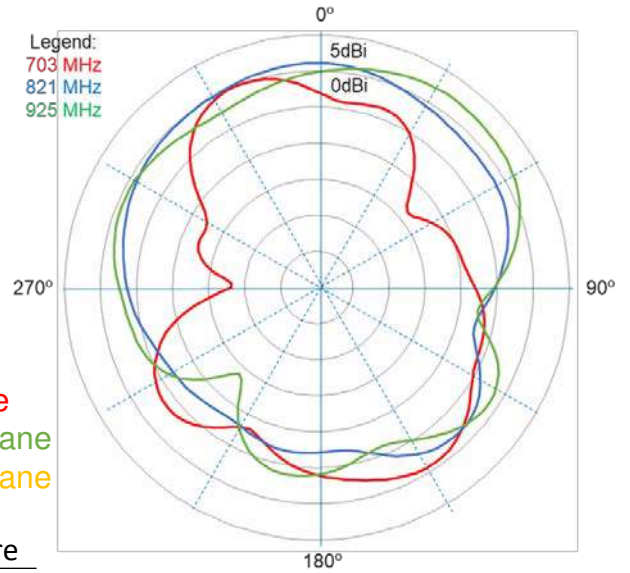


Data measured in free space and on plastic device enclosure

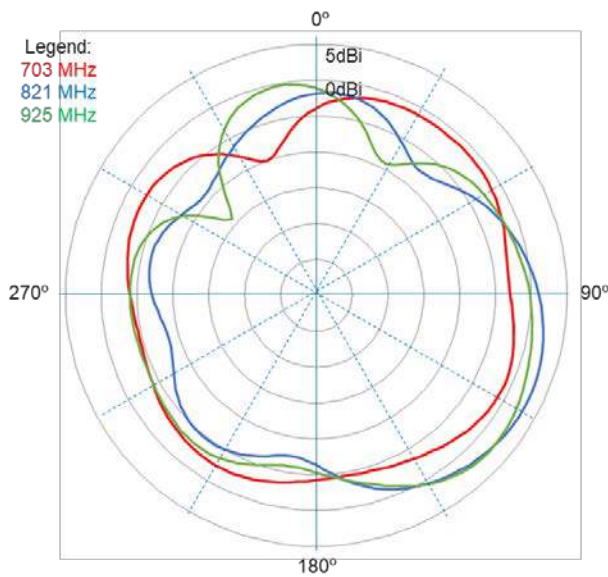
RADIATION PATTERN



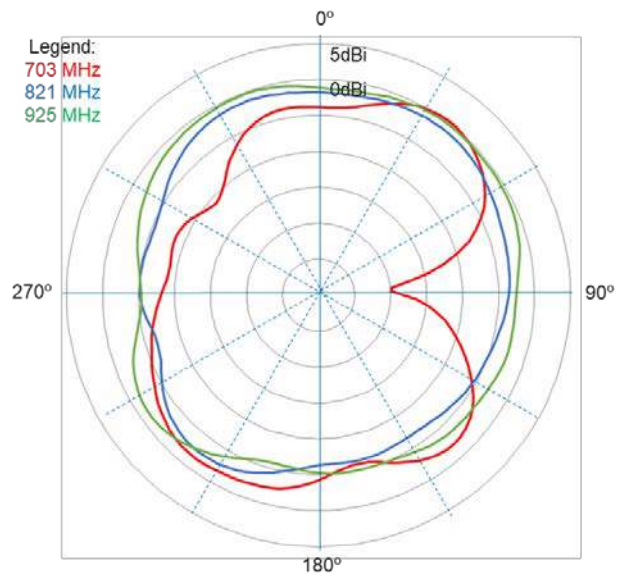
Azimuth



Elevation 1

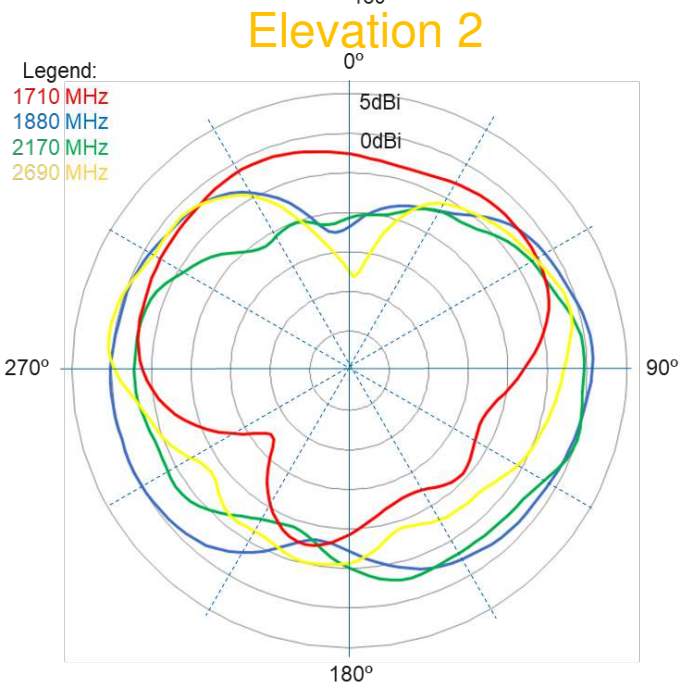
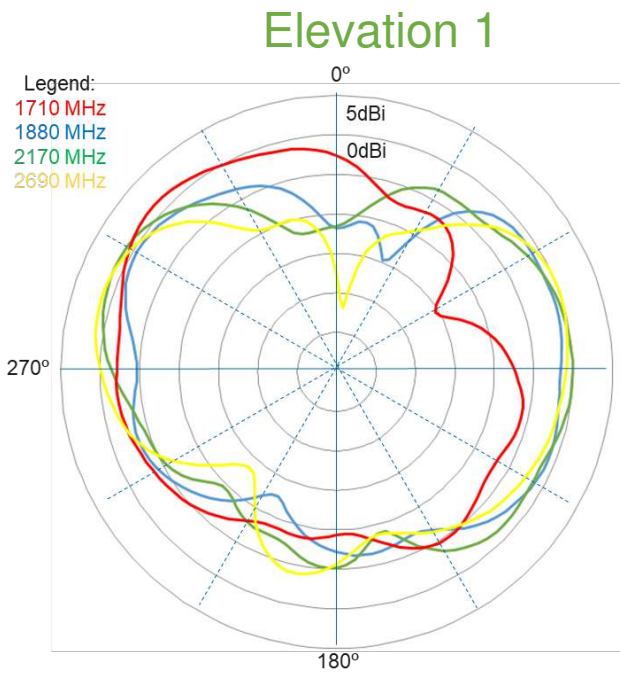
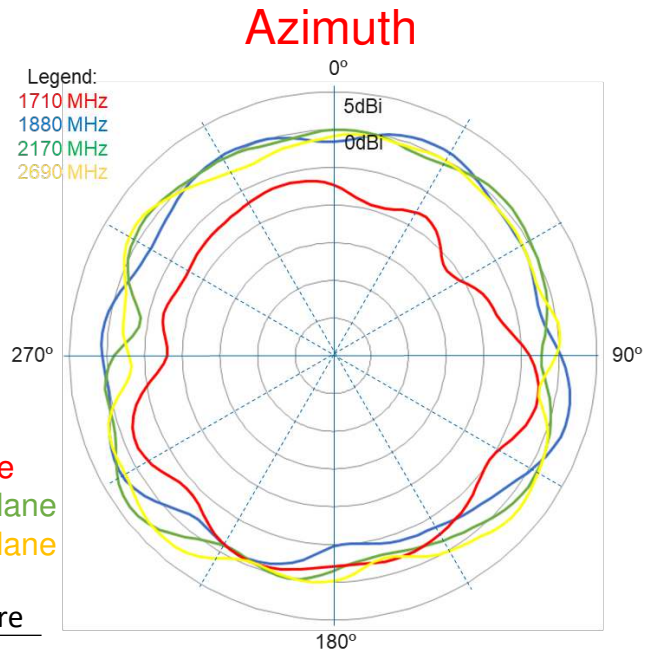
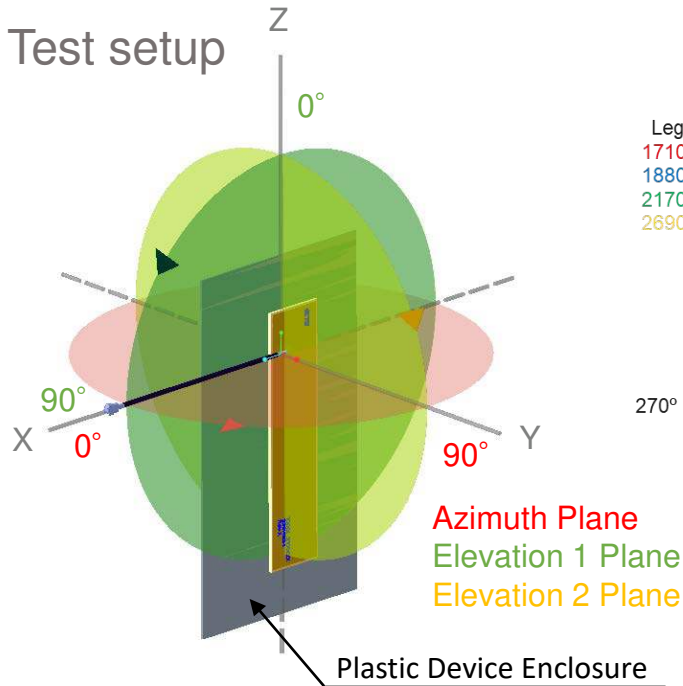


Elevation 2



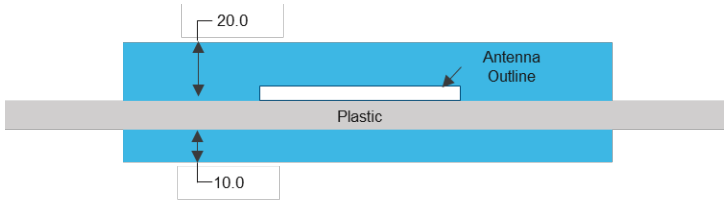
Data measured in free space and on plastic device enclosure

RADIATION PATTERN



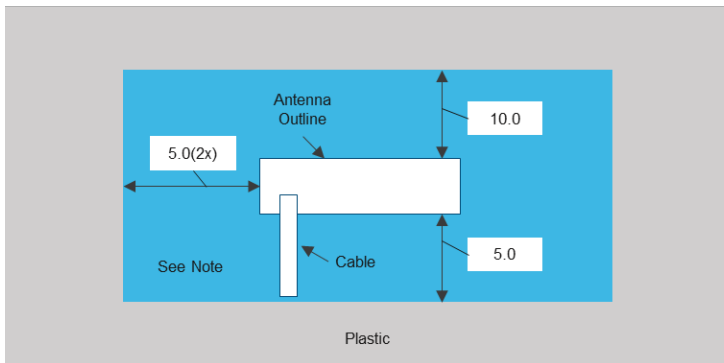
Data measured in free space and on plastic device enclosure

KEEP OUT AREA



NOTES

1. Antenna designed to be mounted on plastic cover.
2. Area in blue indicates Keep Out Area.
3. For more information please call TE.

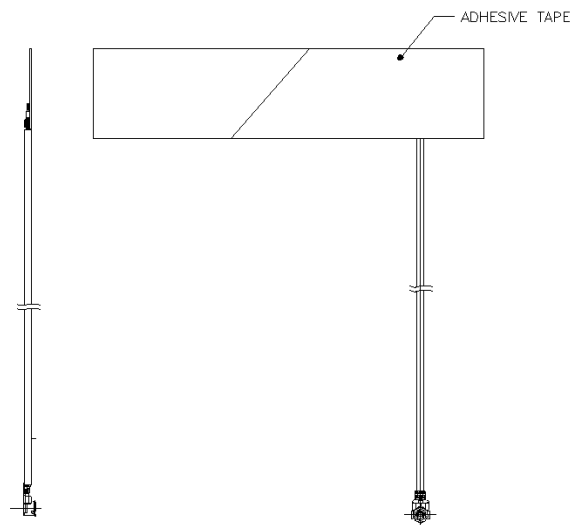
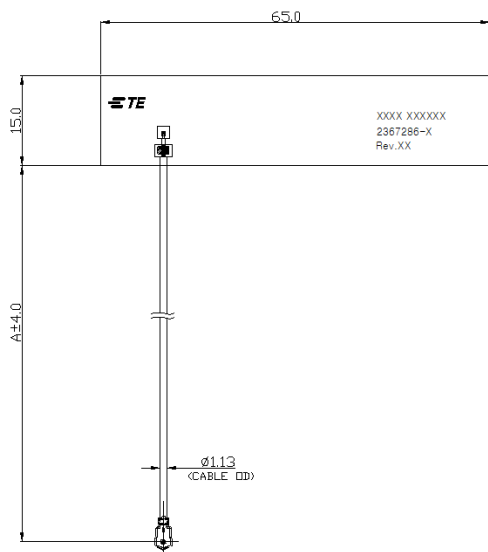


Dimension: mm

Diagrams is not to scale

DIMENSIONS



(Refer to Page6 for dimension "A")



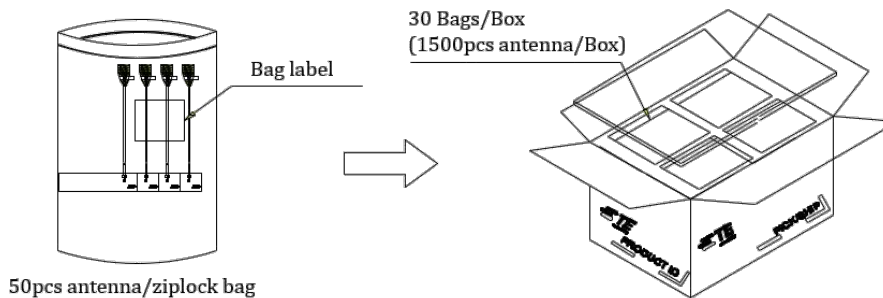
Dimensions: mm

Diagram is not to scale

MATING COMPONENTS TO PART NUMBERS AND DIMENSIONS

2367286-1	200	7.87	1.13	MHF-TYPE PLUG	RECEPTACLE (TE PN: 2337019-1)	
2367286-2	50	1.97	1.13	MHF-TYPE PLUG	RECEPTACLE (TE PN: 2337019-1)	
2367286-4	70	2.75	1.13	MHF-TYPE PLUG	RECEPTACLE (TE PN: 2337019-1)	
2367286-5	200	7.87	1.13	MHF4L-TYPE PLUG	RECEPTACLE (TE PN: 2334884-1)	
2367286-6	50	1.97	1.13	MHF4L-TYPE PLUG	RECEPTACLE (TE PN: 2334884-1)	
PART NUMBER	MM	INCH	CABLE (OD) mm	CONNECTOR TYPE (ON CABLE)	PART NUMBER	IMAGE
	CABLE LENGTH(A)				MATING COMPONENTS	

PACKAGING



TE TECHNICAL SUPPORT CENTER

USA: +1 (800) 522-6752
 Canada: +1 (905) 475-6222
 Mexico: +52 (0) 55-1106-0800
 Latin/S. America: +54 (0) 11-4733-2200
 Germany: +49 (0) 6251-133-1999
 UK: +44 (0) 800-267666
 France: +33 (0) 1-3420-8686
 Netherlands: +31 (0) 73-6246-999
 China: +86 (0) 400-820-6015

For phone numbers in other countries, go to te.com/support-center

te.com

TE Connectivity, TE Connectivity (logo) are trademarks. All other logos, products and/or company names referred to herein might be trademarks of their respective owners.

The information given herein, including drawings, illustrations and schematics which are intended for illustration purposes only, is believed to be reliable. However, TE Connectivity makes no warranties as to its accuracy or completeness and disclaims any liability in connection with its use. TE Connectivity's obligations shall only be as set forth in TE Connectivity's Standard Terms and Conditions of Sale for this product and in no case will TE Connectivity be liable for any incidental, indirect or consequential damages arising out of the sale, resale, use or misuse of the product. Users of TE Connectivity products should make their own evaluation to determine the suitability of each such product for the specific application.

© 2020 TE Connectivity Ltd. family of companies All Rights Reserved.

01/2022