

XF3H

FOR FPC

Rotary Frontlock Connector (0.3-mm Pitch, Lower Contact)

Rotary Frontlock Mechanism with a Depth of 3.5-mm and Low Profile of 0.9 mm

- Ultra-slim connector with a depth of 3.5 mm.
- Wide molding wall on the rear bottom of the connector allows greater freedom in board design.
- Slider open locking mechanism makes work efficient.
- Gold plated with an applicable FPC thickness of 0.2 mm.
- Halogen Free (See note.)

Note: OMRON uses the following standard to determine halogen-free construction:
900 ppm max. for Br, 900 ppm max. for Cl, and 1,500 ppm max. for Br+Cl.

RoHS Compliant

Ratings and Specifications

| | |
|-------------------------------|---|
| Rated current | 0.2A AC/DC |
| Rated voltage | 50V AC/DC |
| Contact resistance | 80mΩ max. (at 20 mV DC max., 100 mA max.) |
| Insulation resistance | 100MΩ min. (at 250V DC) |
| Withstand voltage | 250V AC for 1 min. (leakage current: 1 mA max.) |
| Insertion tolerance | 20 times |
| Ambient operating temperature | -30 to 85°C (with no icing or condensation) |

Materials and Finish

| | |
|----------|---|
| Housing | LCP resin (UL94V-0)/natural |
| Slider | LCP resin (UL94V-0)/brown |
| Contacts | Spring copper alloy/nickel substrate (2μm) Gold-plated contacts (0.15μm) |

Dimensions

XF3H-□□55-31A

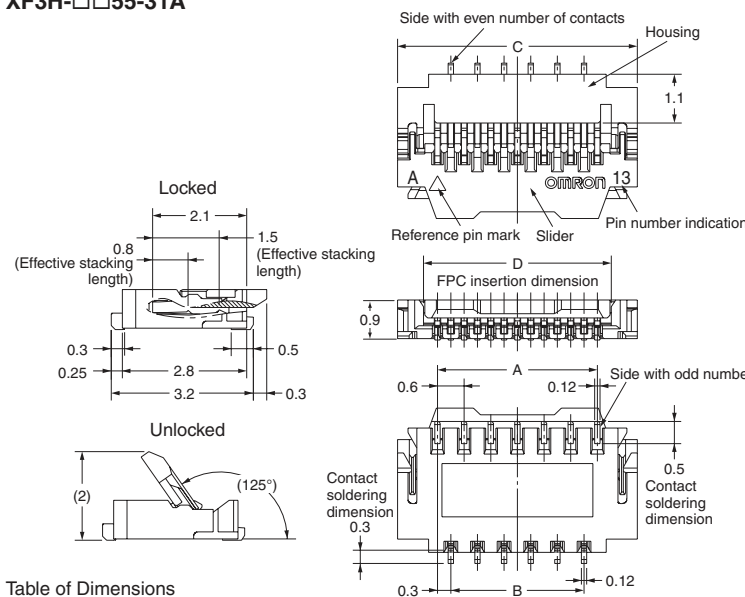
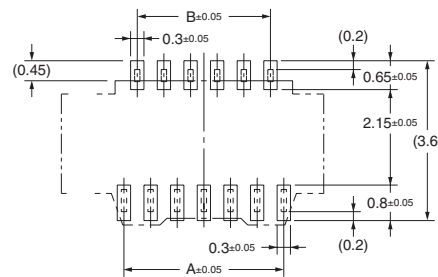


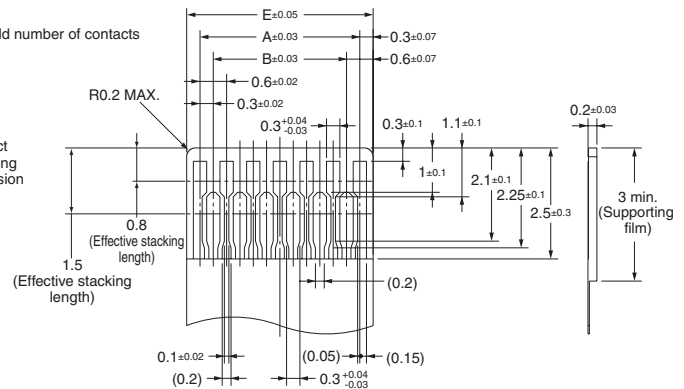
Table of Dimensions

| Pins (See *1.) | Model | A | B | C | D | E |
|----------------|---------------|------|------|------|-------|------|
| 13 | XF3H-1355-31A | 3.6 | 3.0 | 5.4 | 4.23 | 4.2 |
| 25 | XF3H-2555-31A | 7.2 | 6.6 | 9.0 | 7.83 | 7.8 |
| 31 | XF3H-3155-31A | 9.0 | 8.4 | 10.8 | 9.63 | 9.6 |
| 35 | XF3H-3555-31A | 10.2 | 9.6 | 12.0 | 10.83 | 10.8 |
| 39 | XF3H-3955-31A | 11.4 | 10.8 | 13.2 | 12.03 | 12.0 |
| 41 | XF3H-4155-31A | 12.0 | 11.4 | 13.8 | 12.63 | 12.6 |
| 45 | XF3H-4555-31A | 13.2 | 12.6 | 15.0 | 13.83 | 13.8 |
| 51 | XF3H-5155-31A | 15.0 | 14.4 | 16.8 | 15.63 | 15.6 |
| 57 | XF3H-5755-31A | 16.8 | 16.2 | 18.6 | 17.43 | 17.4 |
| 61 | XF3H-6155-31A | 18.0 | 17.4 | 19.8 | 18.63 | 18.6 |

PCB Mating Dimensions (TOP VIEW)



Applicable FPC Dimensions



Ordering Information (Please consult your trading company for the delivery date.)

| Pins (See *1.) | Model | Pins (See *1.) | Model | Quantity per reel (unit) (See *2.) |
|----------------|---------------|----------------|---------------|------------------------------------|
| 13 | XF3H-1355-31A | 41 | XF3H-4155-31A | 3,000 |
| 25 | XF3H-2555-31A | 45 | XF3H-4555-31A | |
| 31 | XF3H-3155-31A | 51 | XF3H-5155-31A | |
| 35 | XF3H-3555-31A | 57 | XF3H-5755-31A | |
| 39 | XF3H-3955-31A | 61 | XF3H-6155-31A | |

*1. Please consult your OMRON representative for available pin count.

*2. Please order by integer multiple of the quantity per reel.