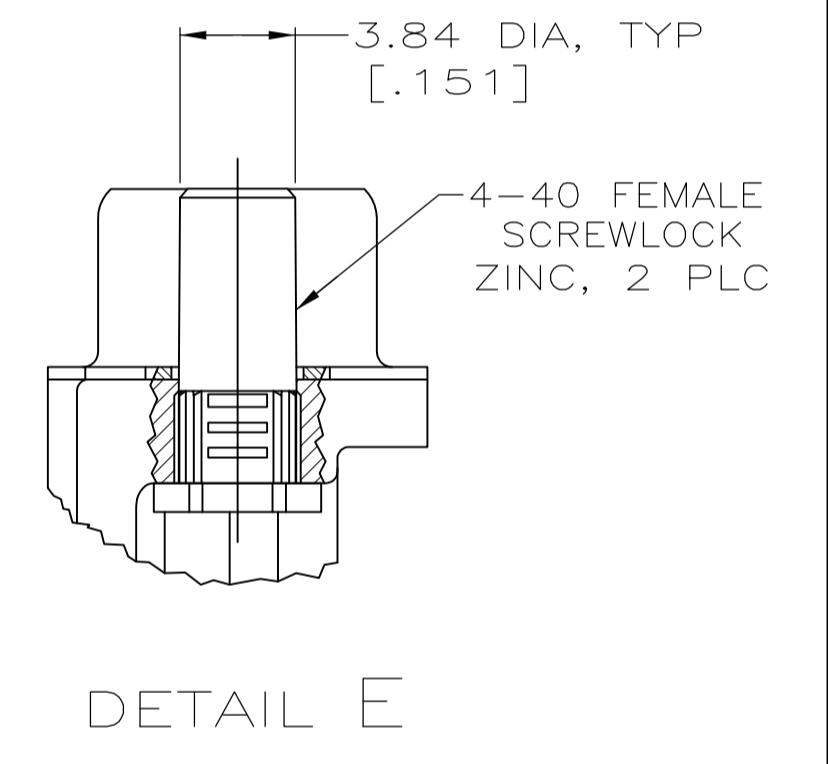
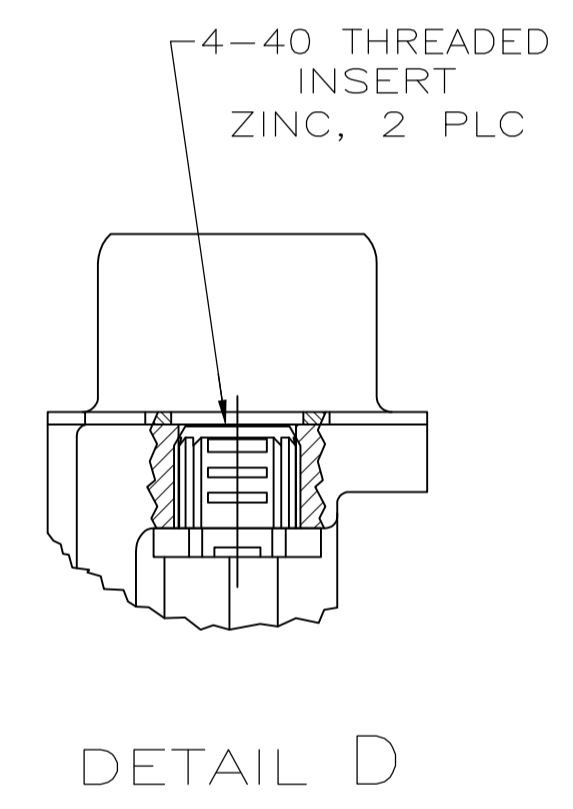
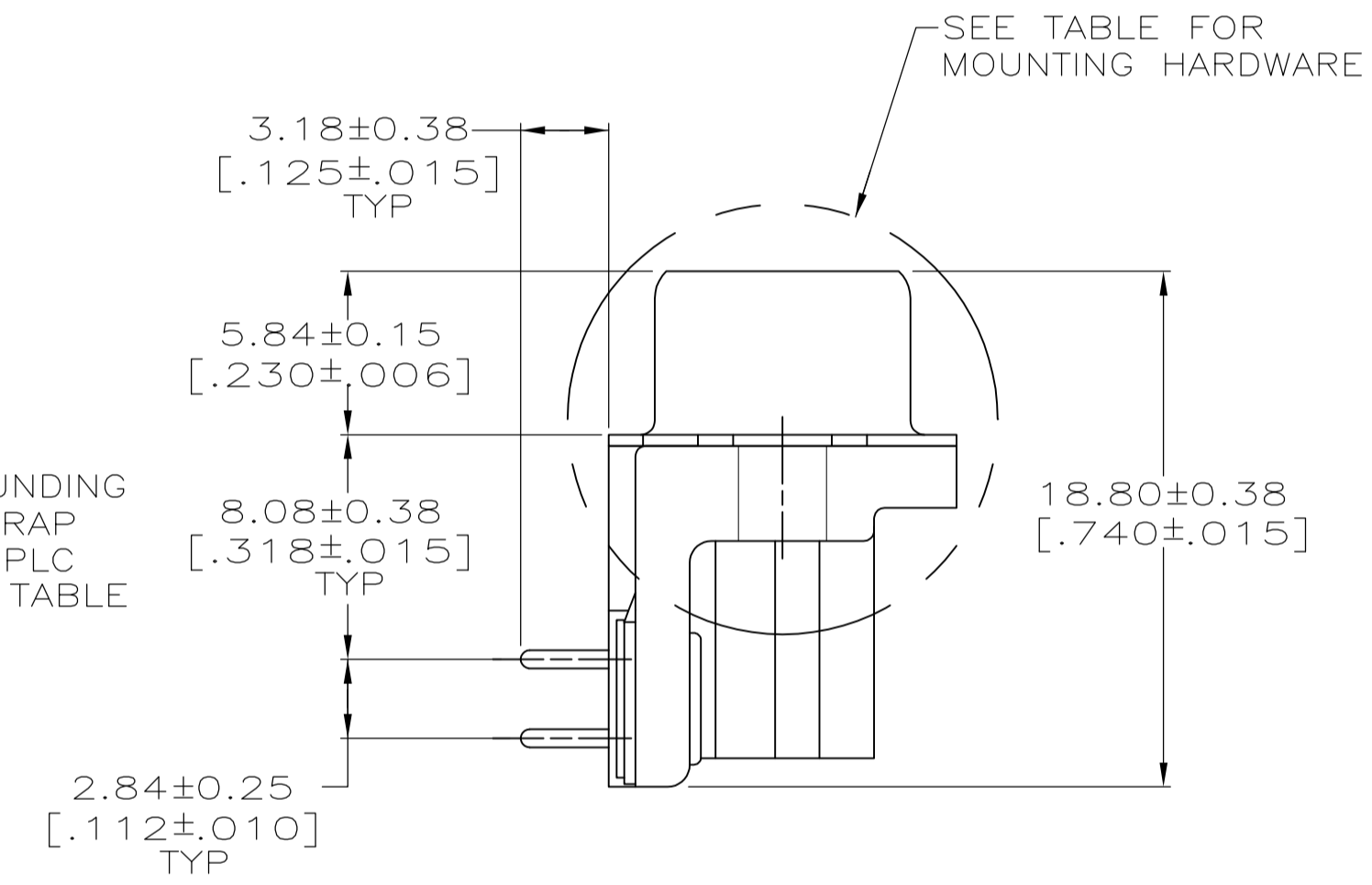
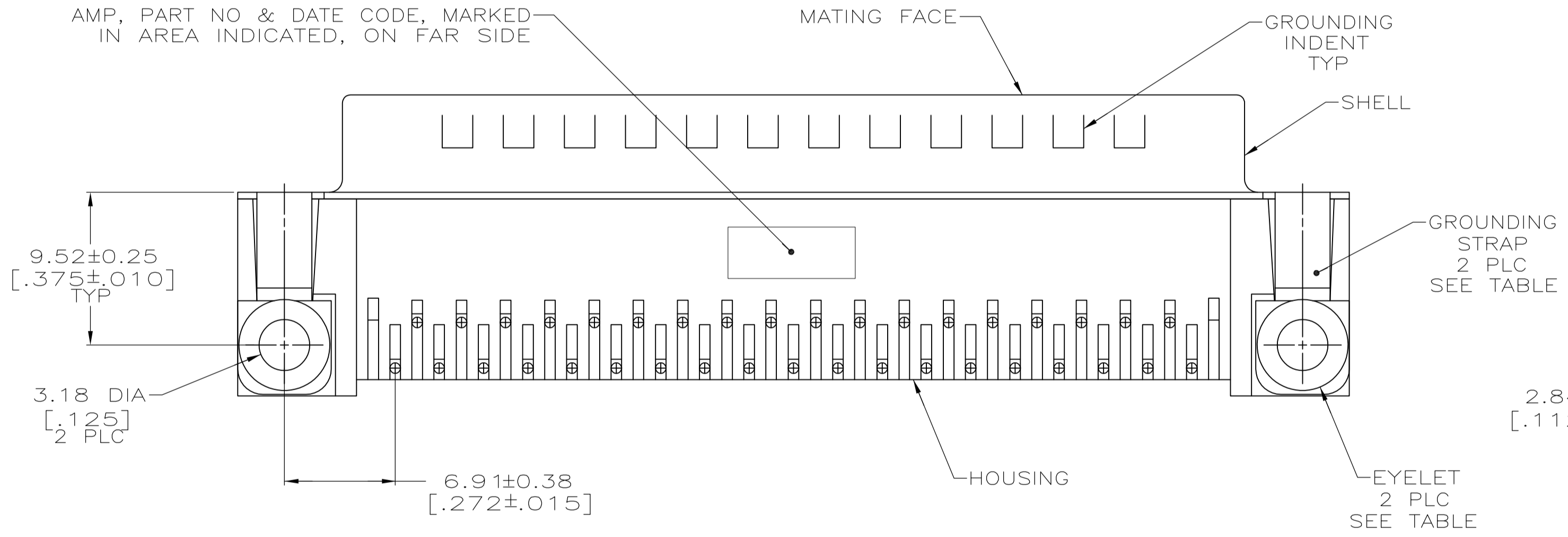
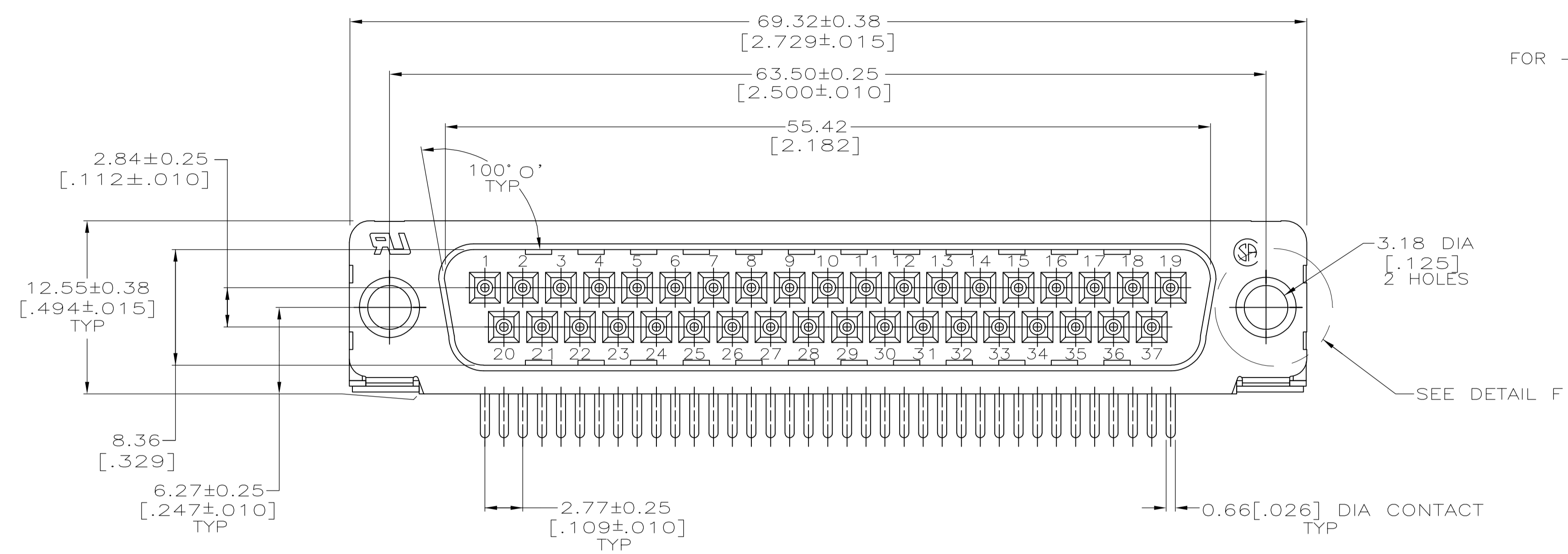


FOR -5, -6, -11 AND -12 ONLY

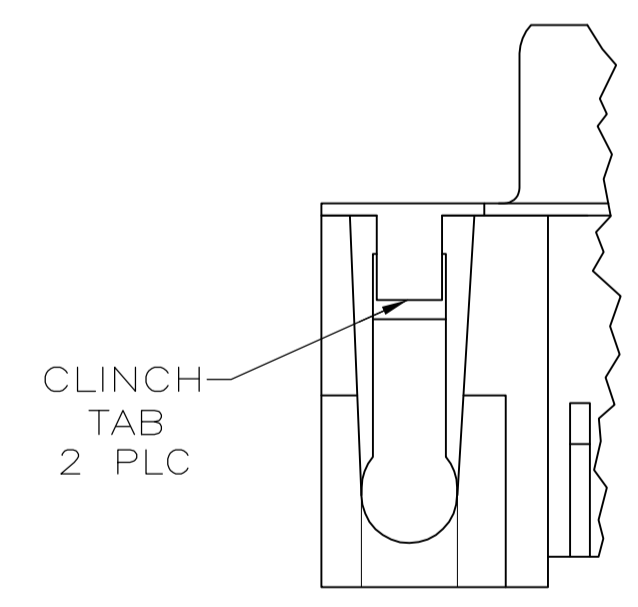
DETAIL F
2 PLC

- ① HOUSING: BLACK NYLON OR POLYESTER, FLAME RETARDANT, UL 94V-0 RATED, GLASS FILLED. CONTACTS: BRASS. SHELLS: CARBON STEEL. EYELETS: BRASS.
- ② SHELLS: 2.54µm[.000100] MIN TIN OVER 1.27µm[.000050] MIN COPPER. EYELETS: 5.08µm[.000200] MIN TIN OVER COPPER FLASH. CONTACTS: SEE TABLE. SCREWLOCK AND INSERT: CLEAR CHROMATE.
- ③ GOLD FLASH ON THE MATING SURFACES, 2.54µm[.000100] MIN TIN OR TIN-LEAD PLATE ON THE SOLDER END, 1.27µm[.000050] MIN NICKEL UNDERPLATE ON THE ENTIRE CONTACT.
- ④ 0.76µm[.000030] MIN GOLD PLATE ON THE MATING SURFACES, 2.54µm[.000100] MIN TIN OR TIN-LEAD PLATE ON THE SOLDER END, 1.27µm[.000050] MIN NICKEL UNDERPLATE ON THE ENTIRE CONTACT
-OR-
GOLD FLASH OVER PALLADIUM-NICKEL PLATE, 0.76µm[.000030] MIN TOTAL ON THE MATING SURFACES, 2.54µm[.000100] MIN TIN OR TIN-LEAD PLATE ON THE SOLDER END, 1.27µm[.000050] MIN NICKEL UNDERPLATE ON THE ENTIRE CONTACT.
- ⑤ OBSOLETE PART NUMBER.
- ⑥ SUPERSEDED BY 747252-4.
- ⑦ SUPERSEDED BY 747252-6.
- ⑧ SUPERSEDED BY 747843-6.

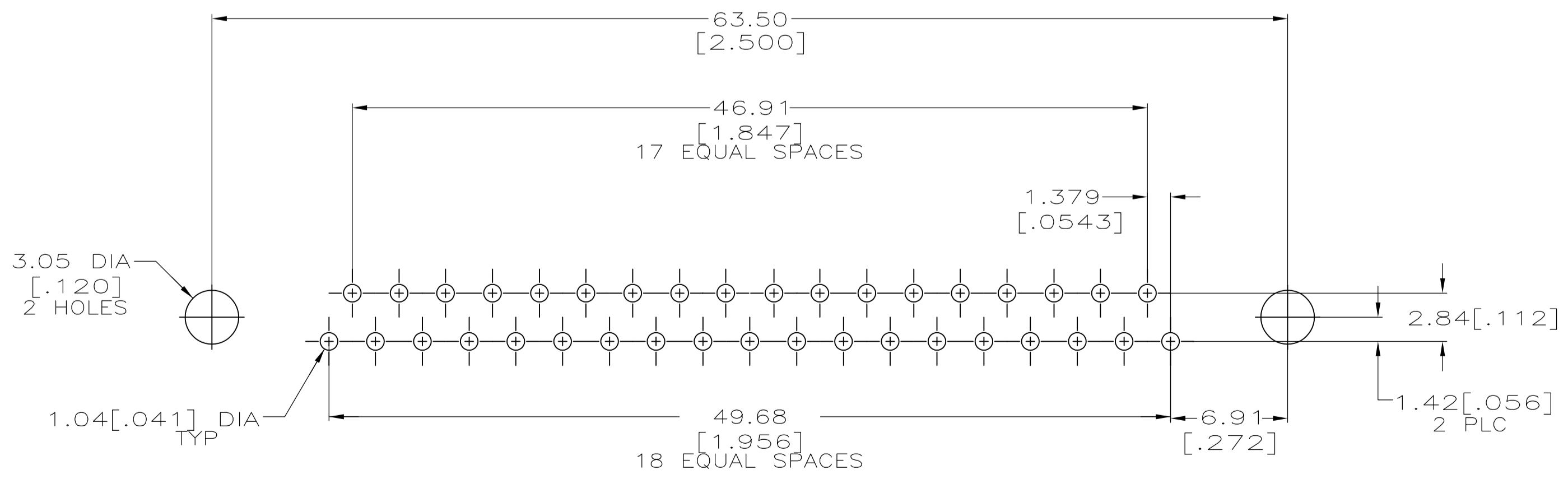


DETAIL D

DETAIL E



DETAIL B



RECOMMENDED P.C. BOARD MOUNTING DIMENSIONS

NO SEE DETAIL B	NO	SEE DETAIL E	④	⑤	1-747252-2
		SEE DETAIL D	④	⑤	1-747252-1
YES	YES	-	④	⑤	1-747252-0
		-	④	⑤	747252-9
		SEE DETAIL E	④	⑤	747252-8
		SEE DETAIL D	④	⑤	747252-7
GROUNDING STRAPS	EYELETS	SEE DETAIL E	④	⑤	747252-6
		SEE DETAIL D	④	⑤	747252-5
		-	④	⑤	747252-4
		-	④	⑤	747252-3
MOUNTING HARDWARE	CONTACT FINISH	-	④	⑤	747252-2
		-	④	⑤	747252-1
PART NUMBER					

THIS DRAWING IS A CONTROLLED DOCUMENT. DIMENSIONING AND TOLERANCING PER ASME Y14.5M-2009.

DIMENSIONS:	TOLERANCES UNLESS OTHERWISE SPECIFIED:	DWG: W.G. LENKER 07-NOV-89	REV: R. STONE 05-FEB-90
mm [INCHES]	0 PLC ± -	APPROV: M.D. GALLOWAY 06-FEB-90	NAME:
	1 PLC ± -	PRODUCT SPEC:	108-40025
	2 PLC ± -	APPLICATION SPEC:	114-40010
	3 PLC ± 0.13[.005]	SIZE:	A1
	4 PLC ± ± 2° 0'	WEIGHT:	-
MATERIAL:	FINISH:	CUSTOMER DRAWING	SCALE: 4:1 SHEET 1 OF 1 REV U

STE TE Connectivity

PLUG ASSEMBLY, SIZE 4, 37 POSITION, RIGHT ANGLE, FRONT METAL SHELL, .318 SERIES, AMPLIMITE® HD-20