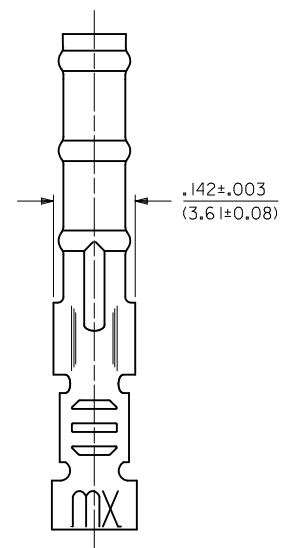
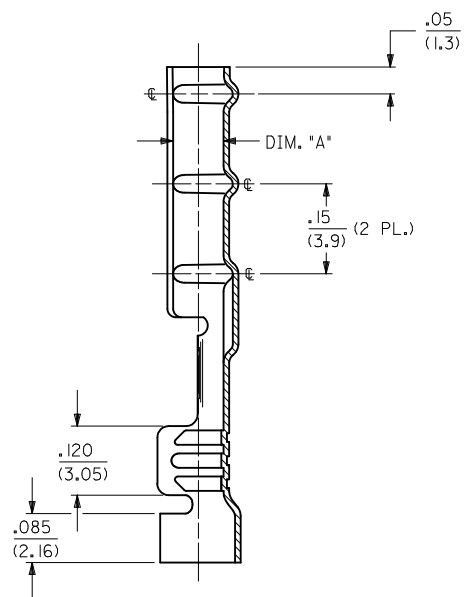
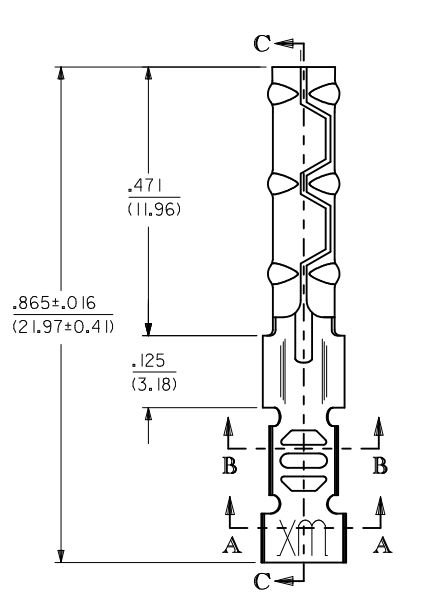
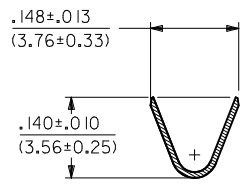


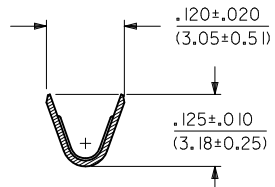
1881-2*** TERMINAL SHOWN (16-24 AWG)
SEE SHEET 2 FOR 1881-3*** TERMINAL



SECTION C-C



SECTION A-A



SECTION B-B

| | | | | | | | |
|--------|-------------|---------|--------------------|-----------------|-------|--------------|-------------|
| UPDATE | 2011/04/11 | QUALITY | GENERAL TOLERANCES | DIMENSION STYLE | SCALE | DESIGN UNITS | THIRD ANGLE |
| REV. | DESCRIPTION | SYMBOLS | (UNLESS SPECIFIED) | IN/MM | 6:1 | INCH | PROJECTION |
| L2 | 2011/04/11 | ▽=0 | | | | | |
| | 2011/04/11 | ▽=0 | | | | | |
| | 2011/05/23 | | | | | | |

| PLACES | mm | INCH |
|--|--------|--------|
| 4 PLACES | ± --- | ± --- |
| 3 PLACES | ± --- | ± .010 |
| 2 PLACES | ± 0.25 | ± .014 |
| 1 PLACE | ± 0.36 | ± --- |
| ANGULAR ±1/2° | | |
| DRAFT WHERE APPLICABLE MUST REMAIN WITHIN DIMENSIONS | | |

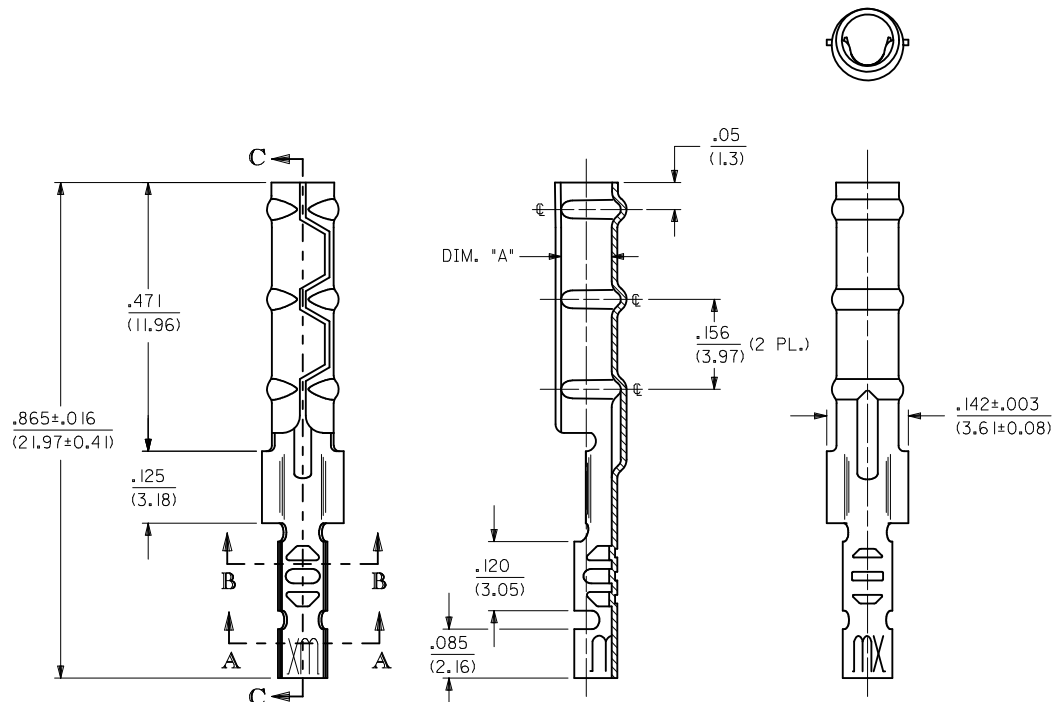
| | |
|--------------|------------|
| DRAWN BY | DATE |
| AELHAG | 2011/04/11 |
| CHECKED BY | DATE |
| JBELL | 2011/04/11 |
| APPROVED BY | DATE |
| | |
| MATERIAL NO. | SEE CHART |

| | |
|--|------------------------------------|
| TITLE | CRIMP TERMINAL SOCKET, CLASPCON |
| DOCUMENT NO. | SD-1881-* |
| SHEET NO. | 1 OF 2 |
| THIS DRAWING CONTAINS INFORMATION THAT IS PROPRIETARY TO MOLEX INCORPORATED AND SHOULD NOT BE USED WITHOUT WRITTEN PERMISSION | |

| | |
|---------|----|
| 2 | L2 |
| 1 | L2 |
| SHT/REV | |

| CHART | | | | |
|-------------|-------------|--------------------------|------------------------|----------|
| PART NUMBER | ENG. NUMBER | DIMENSION "A" (DIA.) | INTERLEAF PAPER OPTION | |
| 02-08-1102 | 1881-2L IA | .085/.090 (2.16/2.29) | YES | |
| 02-08-1101 | 1881-2C IA | | | |
| 02-08-5101 | 1881-2C1A-I | | | |
| 02-08-1106 | 1881-2L IB | .083/.088 (2.11/2.24) | | OBSOLETE |
| 02-08-1105 | 1881-2C IB | | | OBSOLETE |
| | | | | |
| 02-08-1104 | 1881-3L IA | .085/.090 (2.16/2.29) | | |
| 02-08-1103 | 1881-3C IA | | | |
| | | | | |
| 02-08-1107 | 1881-4C IA | .085/.090 (2.16/2.29) | | OBSOLETE |
| 02-08-1108 | 1881-4L IA | | | OBSOLETE |
| | | | | |

1881-3*** TERMINAL SHOWN (24-30 AWG)
SEE SHEET 1 FOR 1881-2*** TERMINAL



LEGEND

1881-***-*

CRIMP STYLE
2 = 16-24 AWG
3 = 24-30 AWG
4 = 22 AWG

INTERLEAF PAPER OPTION
BLANK : INTERLEAF PAPER ON FIRST FEW WRAPS ONLY.
I : INTERLEAF PAPER THROUGH OUT REEL.

FORM
L = LOOSE
C = CHAIN

FINISH
(*P* PRECEEDING FINISH NO. DESIGNATES PREPLATED MATERIAL)
1 = P901 - HOT TIN DIP: .000020/(0.00051) MIN.

BARREL I.D.
A = .085/.090 BARREL I.D.

- NOTES:
1. MATERIAL: CARTRIDGE BRASS
 2. FINISH: SEE LEGEND
 3. PRODUCT SPECIFICATION: N/A
 4. PACKAGING SPECIFICATION: N/A
 5. 1881 "CLASPCON" SERIES TERMINAL WITH THE STANDARD BARREL I.D. IS INTENDED FOR MATING TO .093/(2.36) DIA. P.C. BOARD PINS.
 6. INITIAL EXTRACTION FORCE TO BE 4.0±1.5 LBS. FROM AN .093/.092 / (2.36/2.34) DIA. PIN AND 2 LBS. MIN. AFTER THE 10TH EXTRACTION ON STANDARD BARREL I.D.

| | | | | | | | |
|---|-------------------------------|---|---|--|----------------------|------------------------|--|
| ADD P/N 02-08-5101 EC NO: UCP2011-3131 DRWN: AELHAG 2011/04/11 CHKD: JBELL 2011/04/11 APPR: FSMITH 2011/05/23 | QUALITY SYMBOLS ▽=0 ▽=0 | GENERAL TOLERANCES (UNLESS SPECIFIED) | DIMENSION STYLE IN/MM | SCALE 6:1 | DESIGN UNITS INCH | THIRD ANGLE PROJECTION | |
| | | mm INCH | DRAWN BY DATE AELHAG 2011/04/11 | TITLE CRIMP TERMINAL SOCKET, CLASPCON | | | |
| | | 4 PLACES ± --- ± --- 3 PLACES ± --- ± .010 2 PLACES ± 0.25 ± .014 1 PLACE ± 0.36 ± --- | CHECKED BY DATE JBELL 2011/04/11 | MATERIAL NO. SEE CHART | | | |
| | | ANGULAR ±1/2° | APPROVED BY DATE | DOCUMENT NO. SD-1881-* | SHEET NO. 2 OF 2 | | |
| L2 | | DRAFT WHERE APPLICABLE MUST REMAIN WITHIN DIMENSIONS | THIS DRAWING CONTAINS INFORMATION THAT IS PROPRIETARY TO MOLEX INCORPORATED AND SHOULD NOT BE USED WITHOUT WRITTEN PERMISSION | | | | |