

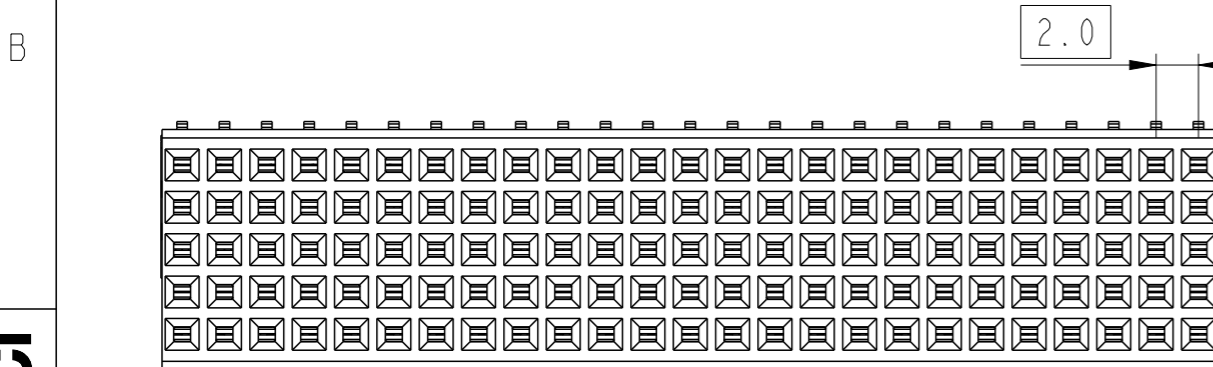
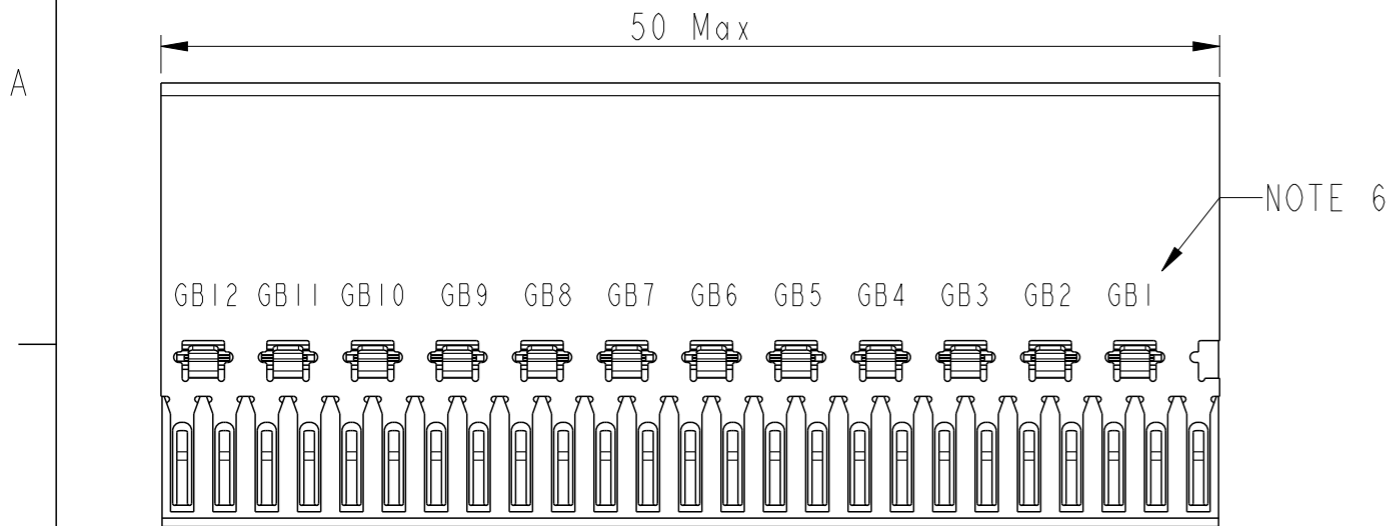
PART NUMBER		GRNDBAR 1 POS	GRNDBAR 2 POS	GRNDBAR 3 POS	GRNDBAR 4 POS	GRNDBAR 5 POS	GRNDBAR 6 POS	GRNDBAR 7 POS	GRNDBAR 8 POS	GRNDBAR 9 POS	GRNDBAR 10 POS	GRNDBAR 11 POS	GRNDBAR 12 POS
10155113-101LF		2A,3B,2C,3D,2E	5A,4B,5C,4D,5E	6A,7B,6C,7D,6E	9A,8B,9C,8D,9E	10A,11B,10C,11D,10E	13A,12B,13C,12D,13E	14A,15B,14C,15D,14E	17A,16B,17C,16D,17E	18A,19B,18C,19D,18E	21A,20B,21C,20D,21E	22A,23B,22C,23D,22E	25A,24B,25C,24D,25E
10155113-102LF		NIL	NIL	NIL	NIL	NIL	NIL	NIL	NIL	NIL	NIL	NIL	NIL

ABOVE TABLE SHOWS CONNECTED GROUND POSITIONS OF INDIVIDUAL GROUNDBARS

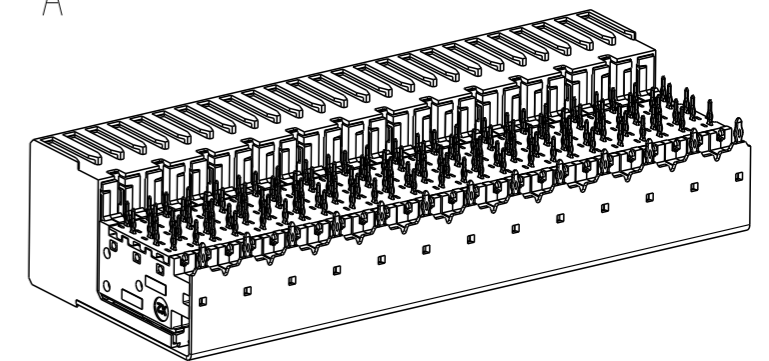
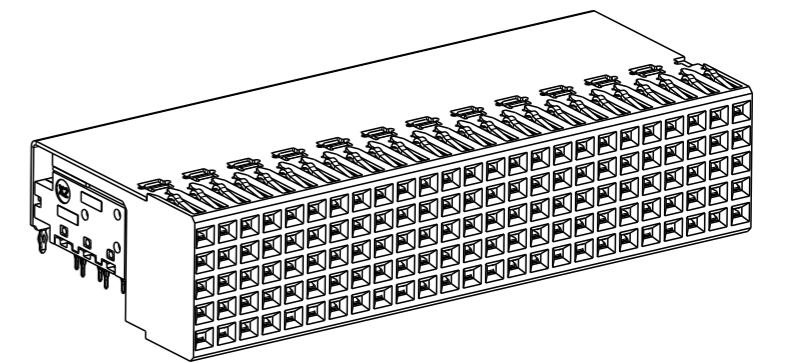
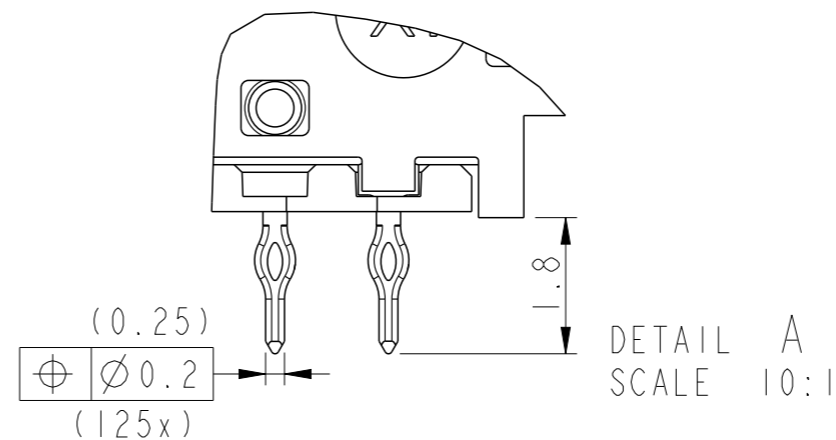
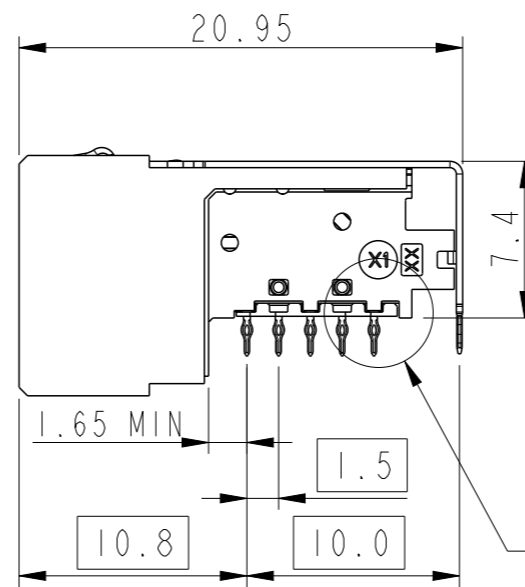
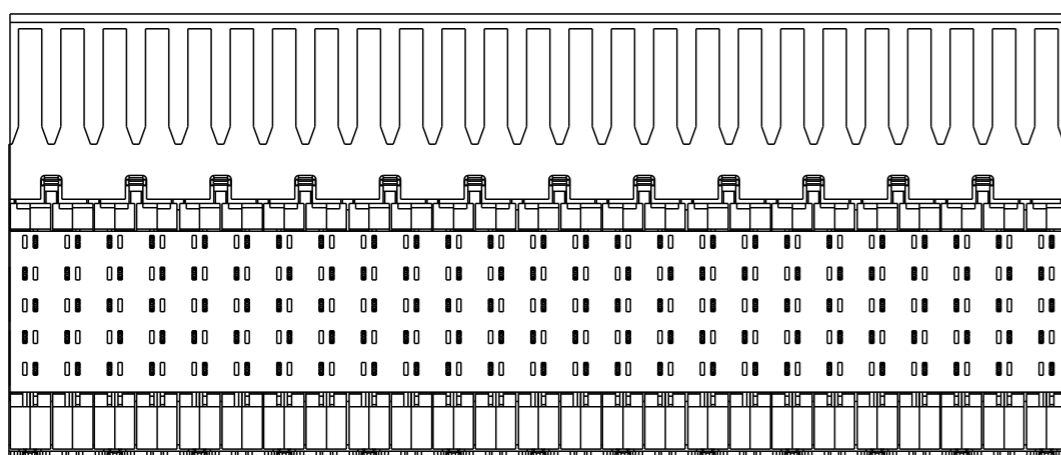
PINNING CONFIGURATION

	G	G	G	G	G	G	G	G	G	G	G	G	G	G	G	G	G	G	G	G	G	G	G	G	G	G
F	G	G	HS	HS	G	G	HS	HS	G	G	HS	HS	G	G	HS	HS	G	G	HS	HS	G	G	HS	HS	G	G
E	HS	HS	G	G	HS	HS	G	G	HS	HS	G	G	HS	HS	G	G	HS	HS	G	G	HS	HS	G	G	HS	HS
D	G	G	HS	HS	G	G	HS	HS	G	G	HS	HS	G	G	HS	HS	G	G	HS	HS	G	G	HS	HS	G	G
C	HS	HS	G	G	HS	HS	G	G	HS	HS	G	G	HS	HS	G	G	HS	HS	G	G	HS	HS	G	G	HS	HS
B	G	G	HS	HS	G	G	HS	HS	G	G	HS	HS	G	G	HS	HS	G	G	HS	HS	G	G	HS	HS	G	G
A	G	G	HS	HS	G	G	HS	HS	G	G	HS	HS	G	G	HS	HS	G	G	HS	HS	G	G	HS	HS	G	G
Z	0	0	0	0	0	0	0	0	0	0	0	0	0	0	0	0	0	0	0	0	0	0	0	0	0	0
	01													25												

HS	HIGH SPEED SIGNAL
LS	LOW SPEED SIGNAL
G	GROUND
0	EMPTY



25 24 23 22 21 20 19 18 17 16 15 14 13 12 11 10 09 08 07 06 05 04 03 02 01



spec ref		-		dr	Binesh C	2019/11/30	projection	MM	size		A3	scale		2:1		
tolerance std		ISO 406 ISO 1101		eng	Binesh C	2019/12/02			ecn no		-					
surface		linear		chr	-	-			rel level		Released					
ISO 1302		angular		0°		±3°	product family	MILLIPACS		dwg no		10155113		rev	A	
TOLERANCES UNLESS OTHERWISE SPECIFIED			Amphenol FCI		TYPE-B RECEPTACLE ASSEMBLY		MILLIPACS HIGH SPEED			cat. no.		10155113-10xLF		Product - Customer Drw		sheet 1 of 2

PART NUMBER:

RECOMMENDED PCB LAYOUT FOR 10155113-10xLF

DIM "A"

0.05
SEE NOTE 5
(25x)

48.0 (24 x 2)

LAND Ø 1.0
(25x)

2.0

2.5

1.5

1.5

6.0

(4 x 1.5)

ANTIPAD
(30x)

DIM "B"

0.05
SEE NOTE 5
(125x)

LAND Ø 0.8
(125x)

NOTE 7

NOTES:

- Materials
 - Housing & Imla's: LCP (UL94 V-0)
 - Leadframe: Copper alloy
- Finish
 - Contact area: Ni underlayer with Au or GXT top layer(Performance Level-2)
 - EON area: Ni underlayer with Sn top layer
- Mates with IEC 61076-4-101 series 2mm HM headers with contact mating level 1 & 2 in signal rows. Outer shielding row of receptacle can mate with level 1,2 & 3 header contacts.
- Mounting style: Press-fit, flat rock insertion
- Refer the table for Recommended plated through hole dimensions.
- Groundbar positions indicated by "GBx".
- Connector spacing

RECOMMENDED PLATED THROUGH HOLE DIMENSIONS

DIM	FINISHED HOLE DIA	Cu. THICKNESS	Sn THICKNESS	DRILLED HOLE DIA
B	0.35-0.45	0.02-0.05	0.0008-0.0012	0.45-0.49
A	0.55-0.65	0.02-0.05	0.0008-0.0012	0.65-0.69

spec ref	-	dr	Binesh C	2019/11/30
tolerance std	ISO 406 ISO 1101	eng	Binesh C	2019/12/02
surface	linear	chr	-	-
	angular	appr	Kuriakose, San	2019/12/02

projection	MM	size	A3	scale	5:1
product family	MILLIPACS	ecn no	-	rel level	Released
Amphenol FCI	TYPE-B RECEPTACLE ASSEMBLY	dwg no	10155113	rev	A
	MILLIPACS HIGH SPEED				
cat. no.	Product - Customer Drw			sheet 2 of 2	

Amphenol FCI

© 2016 AFCI