

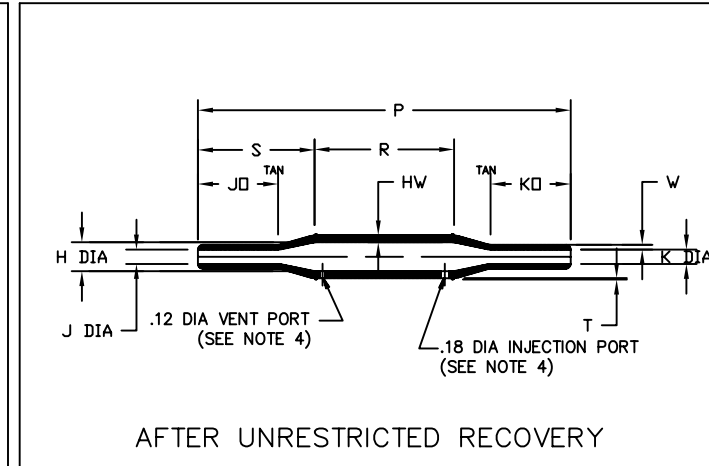
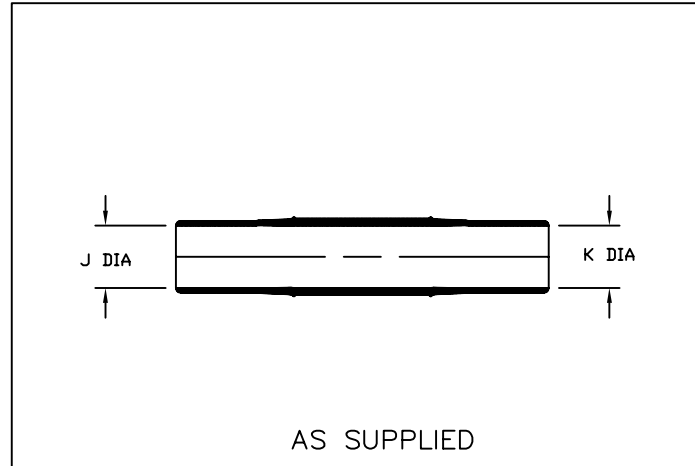
Molded Parts Specification Control Drawing

Part Number : 202B811thru821

Description : Sleeve, Bulbed

NOTES

- All dimensions are in $\frac{\text{inches}}{[\text{millimeters}]}$
- Dimensions appearing in table are as follows:
 - As Supplied
 - After Unrestricted Recovery
- Coating is optional. As supplied dimensions appearing in table are for uncoated parts. When coating is added, entry diameters will be reduced by .06 max.
- Molding ports are optional. When -00 modification number is specified molding ports will be located as shown.



PART NUMBER	H		J & K		P	R	S	JO & KO	HW	W
	Min	Max	Min	Max						
	a	b	a	b	±10% b	±10% b	±10% b	±10% b	±20% b	±20% b
202B811	$\frac{1.34}{[34,0]}$	$\frac{.62}{[15,7]}$	$\frac{1.34}{[34,0]}$	$\frac{.31}{[7,9]}$	$\frac{8.00}{[203,2]}$	$\frac{3.00}{[76,2]}$	$\frac{2.50}{[63,5]}$	$\frac{1.75}{[44,4]}$	$\frac{.15}{[3,8]}$	$\frac{.10}{[2,5]}$
202B821	$\frac{2.00}{[50,8]}$	$\frac{.94}{[23,9]}$	$\frac{2.00}{[50,8]}$	$\frac{.47}{[11,9]}$	$\frac{9.00}{[228,6]}$	$\frac{3.50}{[88,9]}$	$\frac{2.75}{[69,8]}$	$\frac{2.00}{[50,8]}$	$\frac{.15}{[3,8]}$	$\frac{.10}{[2,5]}$

tyco
Electronics **Raychem**

TYCO ELECTRONICS
300 CONSTITUTION DRIVE
MENLO PARK, CALIFORNIA 94025

© 2006 Tyco Electronics Corporation. All rights reserved

If this document is printed it becomes uncontrolled. Check for the latest revision.

Revision : C

Date : 12/04/2006

Page 1 of 2

Part Number : 202B811thru821

Description : Sleeve, Bulbed
CAD FILE MP060166

Molded Parts

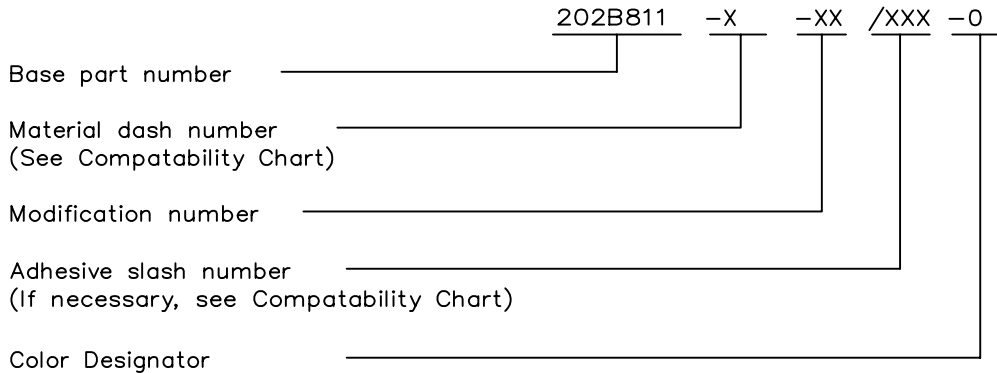
Specification Control Drawing

Part Number : 202B811thru821

Description : Sleeve, Bulbed

COMPATABILITY CHART					
MATERIAL DASH NO.	MATERIAL DESCRIPTION	RT SPEC	COATING SLASH NO.	COATING S NO.	COATING DESCRIPTION
-3	Polyolefin, Semi-rigid	RT-301	N.A.		
-4	Polyolefin, Flexible	RT-1304	N.A.		

ORDERING INFORMATION



THIS DRAWING IS SUBJECT TO CHANGE WITHOUT NOTICE; CONSULT YOUR
NEAREST FIELD REPRESENTATIVE FOR CURRENT REVISION



If this document is printed it becomes uncontrolled. Check for the latest revision.

TYCO ELECTRONICS
300 CONSTITUTION DRIVE
MENLO PARK, CALIFORNIA 94025

Revision : C
Date : 12/04/2006
Page 2 of 2

Part Number : 202B811thru821
Description : Sleeve, Bulbed
CAD FILE MP060166