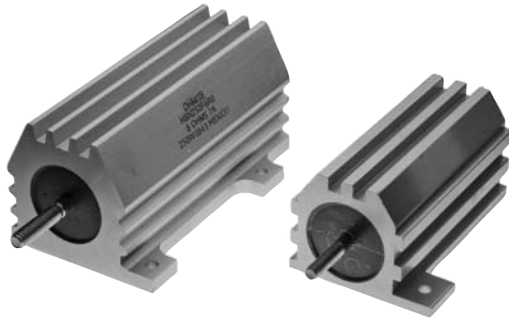


# HS/HSN Series



## Aluminum Housed Axial Terminal Wirewound, Industrial/Commercial Grade



The HS/HSN Series offers greater power capacity (100 and 250 watts) in the same design format as Ohmite's 89 Series.

HS/HSN Series maintains the same construction, materials, and manufacturing techniques as the 89 Series. As a made-to-order product, it is recommended for higher volume applications.

### FEATURES

- Standard winding (Model HS)
- Non-inductive winding (Model HSN)
- Molded construction for total environmental protection
- Complete welded construction
- Mounts on chassis to utilize heat-sink effect
- High stability at conventional power ratings
- Flat marking surface for easy identification
- RoHS compliant; add "E" suffix to part number to specify.

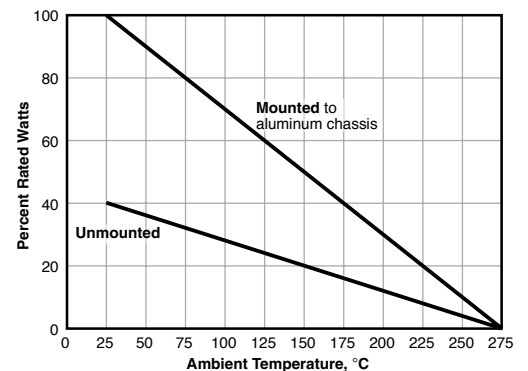
### SERIES SPECIFICATIONS

Series	Power Rating (Watts)	Resistance Range (Ohms)	Max. Working Voltage
HS100	100	0.05 - 29.4K	1900
HSN100	100	1.0 - 14.7K	1350
HS250	250	0.10 - 35.7K	2300
HSN250	250	1.0 - 17.4K	1625

### CHARACTERISTICS

<b>Housing</b>	Aluminum with hard anodic coating
<b>Internal Coating</b>	Silicone
<b>Core</b>	Ceramic
<b>Terminals</b>	Solder-coated axial
<b>Derating</b>	Linearly from 100% @ +25°C to 0% @ +275°C.
<b>Tolerance</b>	±1% and ±5% (other tolerances available)
<b>Power rating</b>	Rating is based on chassis mounting area and temperature stability. Proper heat sink: 12" x 12" x 0.125 Aluminum panel
<b>Overload</b>	5 times rated wattage for 5 seconds
<b>Temperature coefficient</b>	Under 1Ω: ±90 ppm/°C; 1 to 9.99Ω: ±50 ppm/°C; 10Ω and over: ±30 ppm/°C
<b>Dielectric withstanding voltage</b>	4500VAC

### Derating Curve



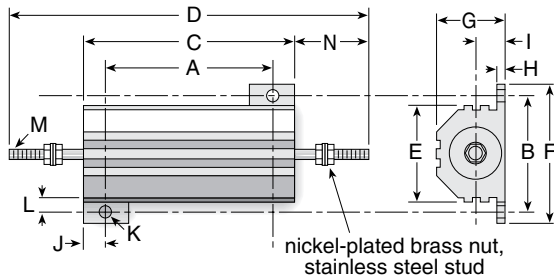
(continued)

# HS/HSN Series

## Aluminum Housed Axial Terminal Wirewound, Industrial/Commercial Grade

### DIMENSIONS

in. (mm)



	HS100 / HSN100 100 watt	HS250 / HSN250 250 watt
Dim. A	2.75 ± .010 (69.85 ± .254)	3.875 ± .010 (98.425 ± .254)
Dim. B	2.25 ± .010 (57.15 ± .254)	2.5 ± .010 (63.50 ± .254)
Dim. C	3.50 ± .031 (88.90 ± .787)	4.5 ± .031 (114.30 ± .787)
Dim. D	5.478 ± .093 (139.14 ± 2.36)	6.73 ± .093 (170.94 ± 2.36)
Dim. E	1.812 ± .031 (46.02 ± .787)	2.125 ± .031 (53.98 ± .787)
Dim. F	2.812 ± .031 (71.42 ± .787)	3.0 ± .031 (76.20 ± .787)
Dim. G	1.75 ± .031 (44.45 ± .787)	2.188 ± .031 (55.58 ± .787)
Dim. H	1.88 ± .031 (4.78 ± .787)	0.250 ± .031 (6.35 ± .787)
Dim. I	0.770 ± .015 (19.56 ± .381)	0.955 ± .015 (24.26 ± .381)
Dim. J	0.375 ± .031 (9.52 ± .787)	0.312 ± .031 (7.92 ± .787)
Dim. K	0.188 ± .010 (4.78 ± .254)	0.188 ± .010 (4.78 ± .254)
Dim. L	0.219 ± .031 (5.56 ± .787)	0.25 ± .031 (6.35 ± .787)
Dim. M	12 - 24 UNC - 2A THD	1/4 - 20 UNC - 2A THD
Dim. N	0.989 ± .031 (25.12 ± .787)	1.25 ± .031 (31.75 ± .787)

### ORDERING INFORMATION

Non-Inductive Winding  
 Optional (blank = std. winding)

**HSN100JR05E**

Series	Wattage	Tolerance	Ohms	RoHS Compliant
100		F = 1%	R05 = 0.05Ω	
250		J = 5%	1R0 = 1.0Ω	
		K = 10%	10R = 10Ω	
			100 = 100Ω	
			10K = 10,000Ω	
			14K7 = 14,700Ω	

# Mouser Electronics

Authorized Distributor

Click to View Pricing, Inventory, Delivery & Lifecycle Information:

[Ohmite:](#)

[HSN250F2R5E](#) [HS205ASL20K00T](#)