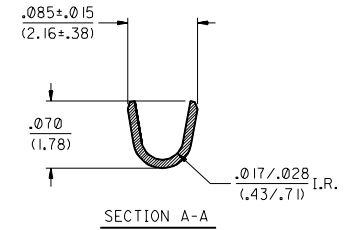
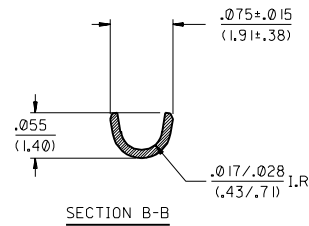
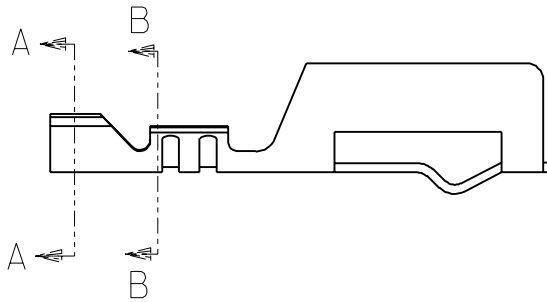


NOTES:

1. FOR ALL OTHER DIMENSIONS SEE SHEET I.
2. THE -6\* GROUP CRIMPS #24 TO #30 AWG WIRE WITH AN INSULATION DIAMETER OF  $.050$  (1.27)



PART NO.	ENG. NO.	FORM	PLATING
05-02-0091	I457-6	CHAIN	TIN PER
05-02-0092	I457-6L	LOOSE	SDES-88

SEE SHEET I	
SEE SHEET I	
SEE SHEET I	
SEE SHEET I	
S	SEE SHEET I
R1	SEE SHEET I
R	SEE SHEET I
LTR.	REVISIONS
LTR.	REVISIONS

DIMENSIONS SHOWN METRIC (INCH)	
UNLESS OTHERWISE SPECIFIED TOLERANCES: ANGULAR ± .005	
3 PLACE	± .010
2 PLACE	± .014
1 PLACE	± .036
DRAFT WHERE APPLICABLE MUST REMAIN WITHIN DIMENSIONS	
DRWG. BY: AFG	CHKD. BY: RHR
APP'D. BY: GWF	SCALE: 4 : 1

$\nabla = 0$     $\blacktriangledown = 0$    **REVISE ONLY ON CAD SYSTEM**  
 TITLE: **TERMINAL, COMMONING, CRIMP**  
 (I457-6\*)  
**MOLEX INCORPORATED**   SHEET NO. 3   DATE 02/11/91  
 LITTLE FALLS, N.J. 07424   U.S.A.  
**SEE CHART**   DRWG. NO. **SD-I457-\***  
 FILE NAME: SDI457X3   DIV. CP   SIZE C  
 THIS DRAWING CONTAINS INFORMATION THAT IS PROPRIETARY TO MOLEX INC. AND SHOULD NOT BE USED WITHOUT WRITTEN PERMISSION.