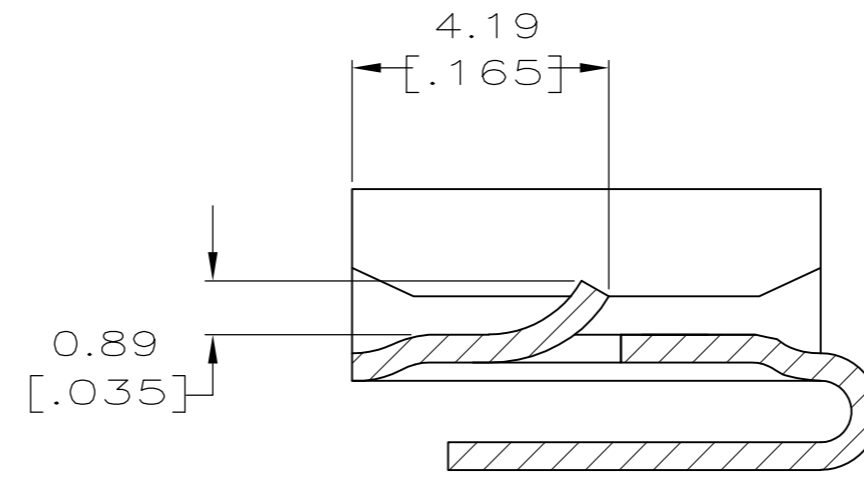
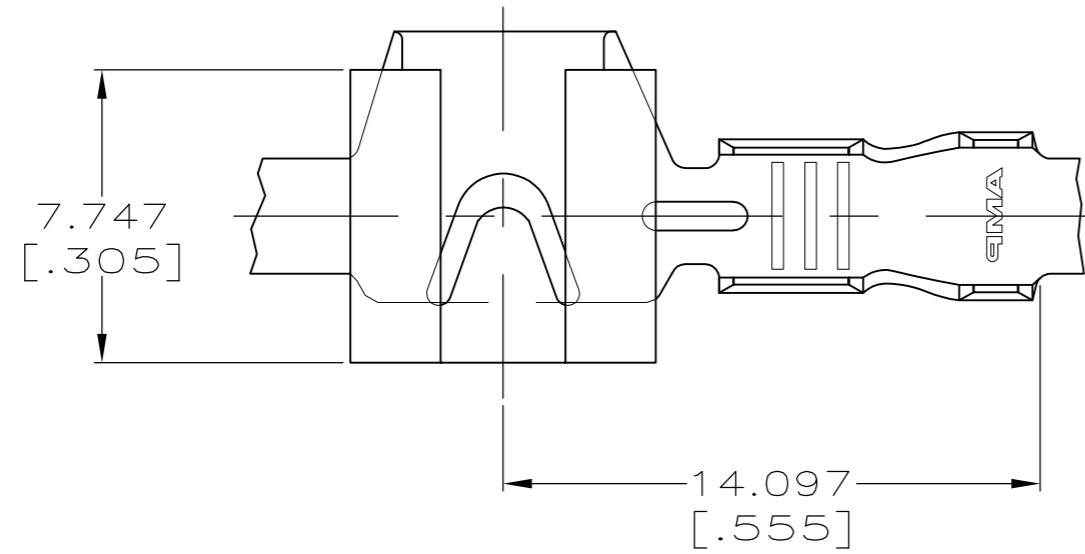


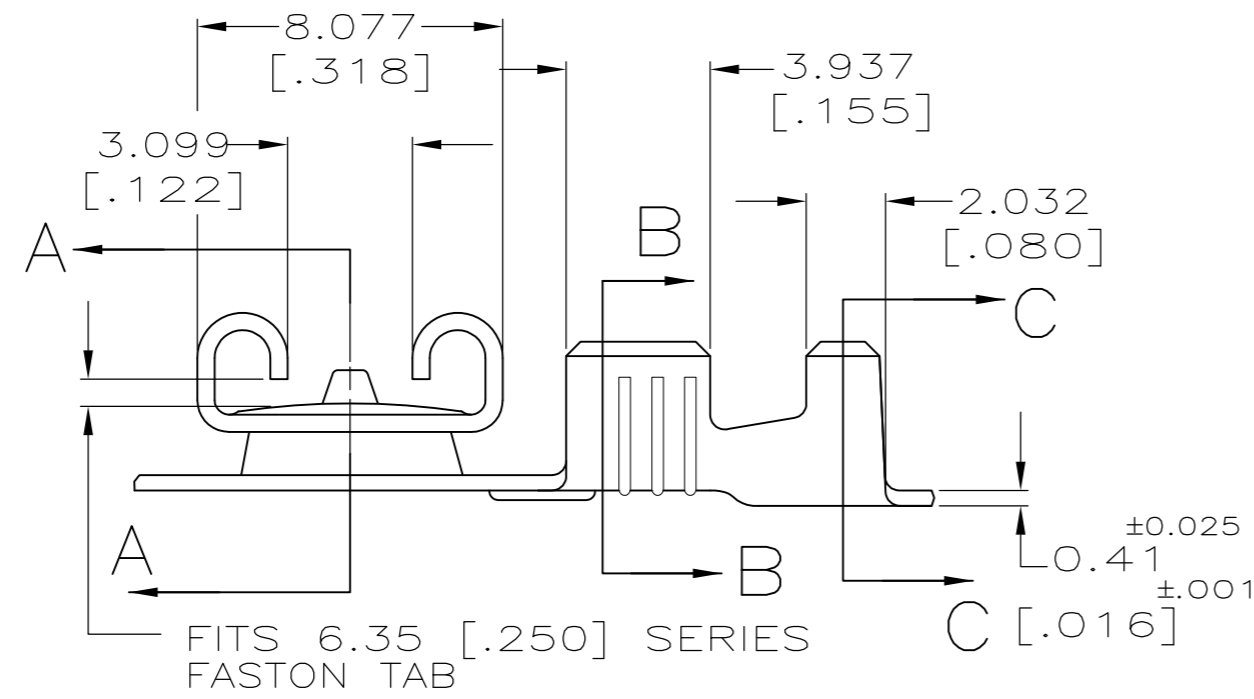
THIS DRAWING IS UNPUBLISHED. RELEASED FOR PUBLICATION  
 © COPYRIGHT - By - ALL RIGHTS RESERVED.

LOC		DIST		REVISIONS			
P	LTR	DESCRIPTION		DATE	DWN	APVD	
AF	50	F		REVISED PER ECR-12-013518	23NOV2012	KH	PD

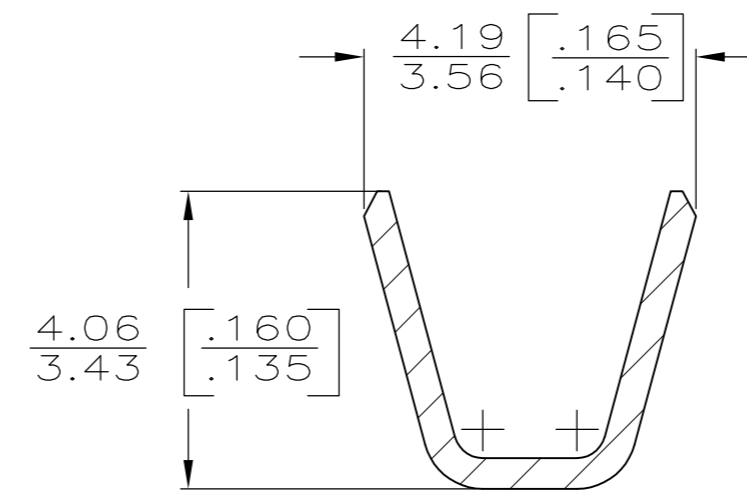
1 CONTINUOUS STRIP ON REELS.



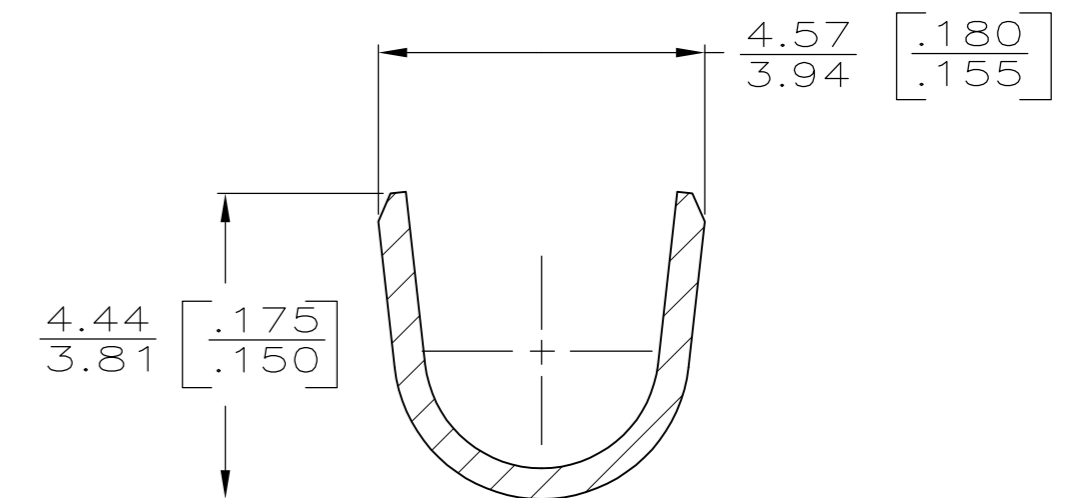
SECTION A-A  
SCALE 8:1



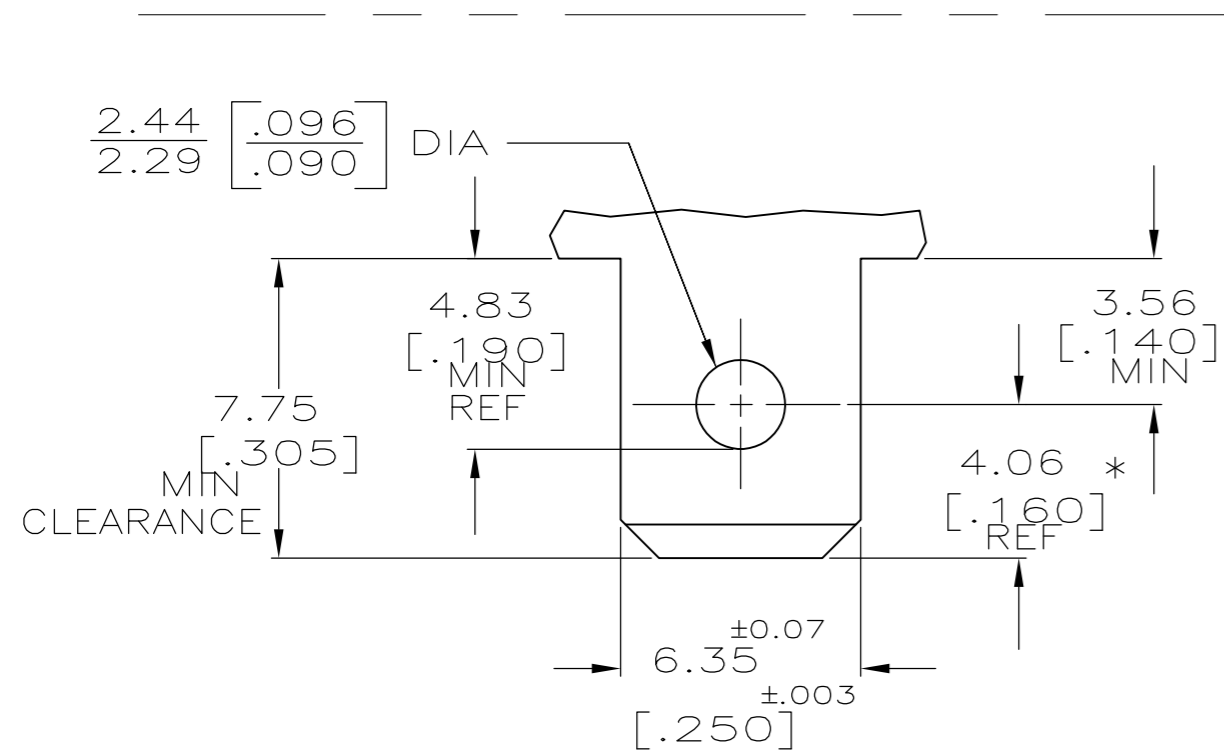
FITS 6.35 [.250] SERIES FASTON TAB



SECTION B-B  
SCALE 10:1



SECTION C-C  
SCALE 10:1



RECOMMENDED MATING TAB

MAT'L: 1/2 H BRASS OR NICKEL PL STL

\* TO BE USE ONLY WHEN SHOULDER IS ELIMINATED

2.29-3.30 [.090-.130]	0.8-2.0mm <sup>2</sup> [18-14]	0.81 [.032]	63541-1
INSUL RANGE	WIRE SIZE	MATING TAB THK ±.001	PART NO

0	3.56 [.140]	5.59 [.220]	F	3.30 [.130]	1.75 [.069]	2.0mm <sup>2</sup> [14]	THIS DRAWING IS A CONTROLLED DOCUMENT.	DWN	JR RUTH	6/27/89	 TE Connectivity RECP.T., FASTON, FLAG, REVERSIBLE, LOCK-ON, 6.35 [.250] SERIES														
					1.55 [.061]	1.3mm <sup>2</sup> [16]		CHK	P FORTNEY	6/27/89															
1.42 [.056]	0.8mm <sup>2</sup> [18]	APVD	J GILLESPIE	6/27/89	NAME																				
DIMENSIONS: mm [INCHES]		TOLERANCES UNLESS OTHERWISE SPECIFIED:		PRODUCT SPEC																					
TYPE	WIDTH	STRIP LENGTH ±.015	TYPE	WIDTH	HEIGHT	WIRE	0 PLC ± -	1 PLC ± -	2 PLC ± -	3 PLC ± 0.25 [.010]	4 PLC ± -	ANGLES ± -	FINISH	TIN	APPLICATION SPEC	WEIGHT	-	SIZE	A2	CAGE CODE	00779	DRAWING NO	C=63541	RESTRICTED TO	-
INSUL BARREL CRIMP			WIRE BARREL CRIMP				MATERIAL	BRASS										CUSTOMER DRAWING	SCALE	5:1	SHEET	1 OF 1	REV	F	