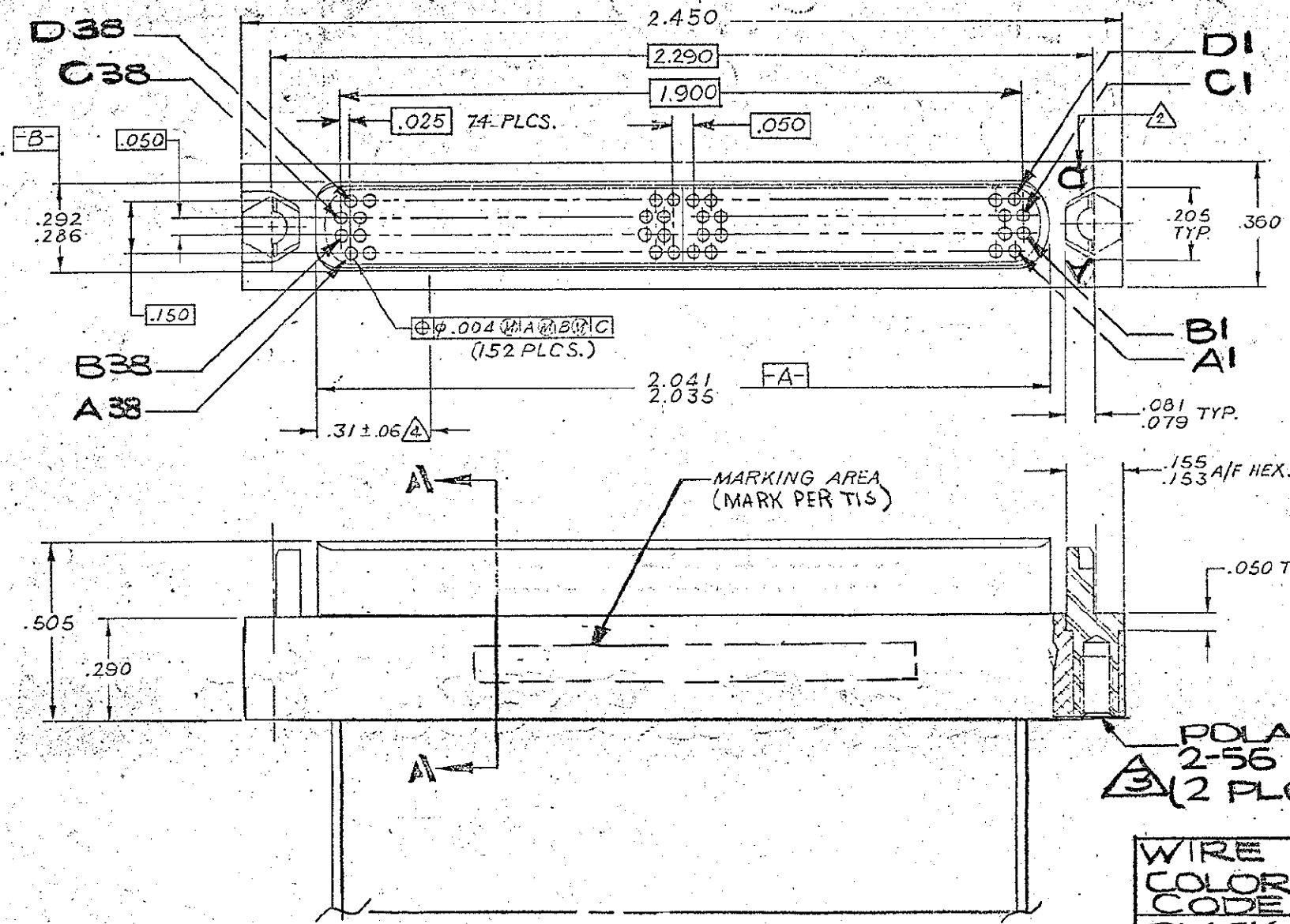


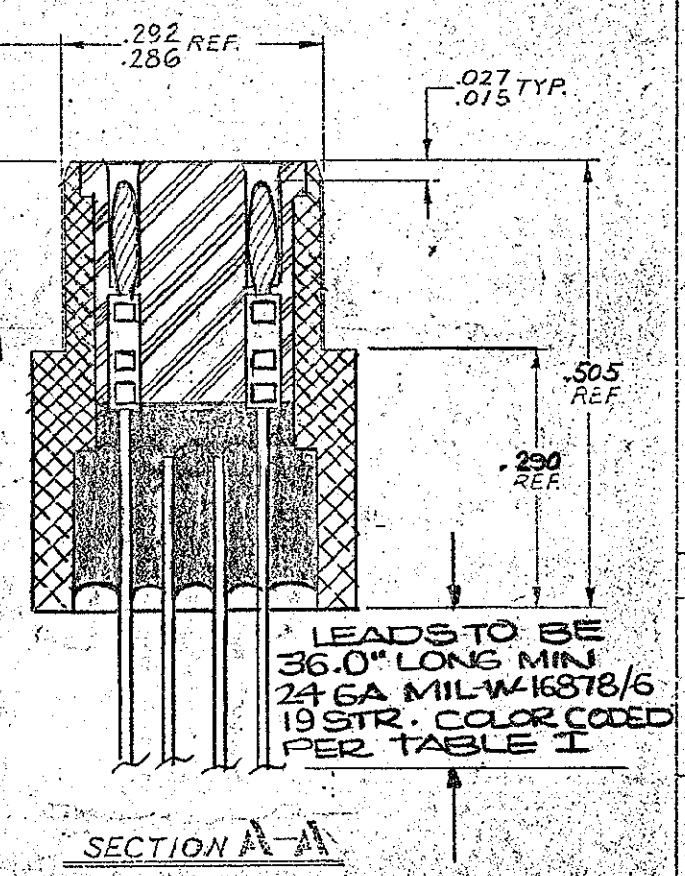
| REVISIONS | | | | |
|-----------|-----|-------|--------------------------|----------|
| ZONE | LTR | ECN | DESCRIPTION | APPROVED |
| A | | 33726 | NEW RELEASE | 9/18/91 |
| B | | 35408 | CAV. LOC. UPDATE SEE ECN | |
| C | | 35180 | CORRECT LTR DESIGNATOR | 1/11/92 |
| D | | 36545 | MKG. LOC. UPDATE | 9/5/96 |
| E | | 40427 | UPDATE REV. LETTER | 8/16/98 |



POLARIZING KEY
 2-56 UNC-2BX .125 DEEP MIN
 (2 PLCS)

TABLE I

| WIRE COLOR CODE | CAVITY NO. (A, B, C, D) |
|-----------------|-------------------------|
| BLACK | 1, 11, 21, 31 |
| BROWN | 2, 12, 22, 32 |
| RED | 3, 13, 23, 33 |
| ORANGE | 4, 14, 24, 34 |
| YELLOW | 5, 15, 25, 35 |
| GREEN | 6, 16, 26, 36 |
| BLUE | 7, 17, 27, 37 |
| VIOLET | 8, 18, 28, 38 |
| GRAY | 9, 19, 29 |
| WHITE | 10, 20, 30 |



NOTES: UNLESS OTHERWISE SPECIFIED.

- 1. MASK & IRIDITE.
- 2. ORIENTATION IS OPTIONAL FOR LETTER DESIGNATORS.
- 3. SUPPLIED LOOSE PACKED.
- 4. .286/.292 DIM. APPLIES ONLY OVER A DISTANCE OF .31 FROM EACH END OF THE KEYSTONE.
- 5. CRIMP LEADS INTO CONTACTS PER MEP 302-05.
- 6. EPOXY USED IS EMERSON & CLIMING STYCAST 2850 FT. COLOR BLUE P/N: 194-8702-6260. USE OF OTHER ADHESIVE OTHER THAN EPOXY IS NOT PERMITTED (I.E. LOCTITE CYANOACRYLATE).

- 7. PREPARATION OF NICKEL PLTD. SURFACE IS REQ'D TO ENSURE BONDING OF EPOXY ENCAPSULANT TO SHELL.
- 8. MEASURE AND RECORD MATING FORCE PER MEP 302-21.

| | | | |
|---|-----|--|------------------------------|
| QTY | LOC | PART OR IDENTIFYING NO. | SYMBOLIC LINE OR DESCRIPTION |
| | | | PARTS LIST |
| UNLESS OTHERWISE SPECIFIED DIMENSIONS ARE IN INCHES TOLERANCES ARE: | | APPROVALS | DATE |
| FRACTIONS DECIMALS ANGLES | | | |
| = 1/100 ± 0.005 | | | |
| MATERIAL | | SHIMAZU | 7/28/91 |
| FINISH | | | |
| NEXT ASSY USED IN | | | |
| APPLICATION | | | |
| DO NOT SCALE DRAWING | | | |
| MICRODOT CONNECTORS A DIVISION OF UNI-STAR INDUSTRIES INC. 36 FISHERMAN AVE., SC. FISHERMAN, CA 94540 | | CONNECTOR, HIGH DENSITY 152 CONTACT, HD5M-152P4D9-36.0 CDM | |
| | | 98278 095-9091-1061 | |
| | | NONE | |