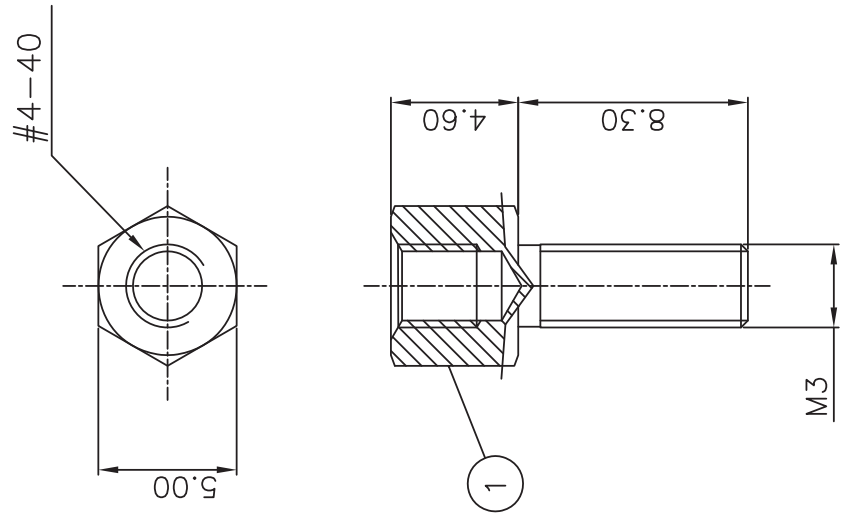


This document is the property of Amphenol Corporation and is delivered on the express condition that it is not to be disseminated, reproduced or used, in whole or in part, without the prior consent of Amphenol Corporation. Amphenol Corporation reserves the right to use any information in this document.



- ① 1 SCREWS
- ② 2 WASHERS
- ③ 1 LOCK WASHERS
- ④ 1 NUTS



D-SUB TECHNICAL DATA

*Material : steel
 Plating : tinned
 delivered separately
 1 P/N = 1 lockings
 2 lockings are necessary for one connector*

MARKING:
 Amphenol-...(Series No.)
 Commercial reference
 Manufacturing date

| REVISIONS | | |
|-----------|-----|----------|
| SYM | ECN | DATE |
| 1 | | 08/17/07 |

| | | | |
|--------------------------------------------|-----|--------------------------------------|----------|
| UNLESS OTHERWISE SPECIFIED TOLERANCES U.S. | | APPROVAL | DATE |
| .X | +/- | DRAWN | 08/17/07 |
| .XX | +/- | CHECKED | 08/17/07 |
| .XXX | +/- | CHECKED | 08/17/07 |
| FRACTIONS | +/- | | |
| ANGLES | +/- | | |
| FOR MATERIALS AND FINISHES SEE NOTES | | DRAWING FILE : DRAWING:DWG:081707 | |
| REMOVE SHARP EDGES | | ANGLE OF PROJECTION | |
| DIMENSIONS | | | |
| TUS- MFRIC | | TUSHES MM | |
| TITLE | | SCALE | |
| Amphenol | | NONE | |
| Accessory, screwlock with nut and washes | | SHEET 1 OF 1 | |
| SIZE DRAWING NO. A4 | | REV. 1 | |
| C L17 D20 418 2 M3 EX | | | |