

Interactive Catalog Replaces Catalog Pages

Honeywell Sensing and Control has replaced the PDF product catalog with the new **Interactive Catalog**. The **Interactive Catalog** is a power search tool that makes it easier to find product information. It includes more installation, application, and technical information than ever before.



**Click this icon to try the new
Interactive Catalog.**

Sensing and Control

Honeywell Inc.

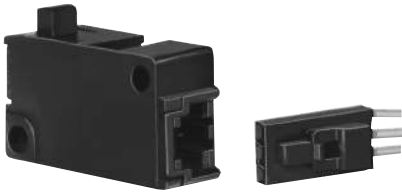
11 West Spring Street

Freeport, Illinois 61032

Solid State Sensors

Solid State Basic Switch

VX Series



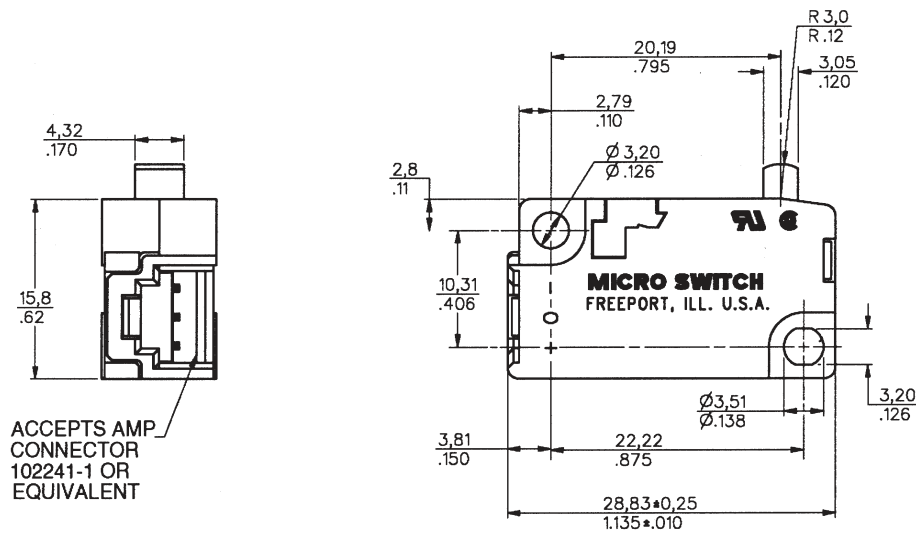
FEATURES

- Plunger operated non-contact digital output
- Low force operation
- -40° to +70°C operating temperature
- Direct interface to solid state circuits
- Reverse voltage protection
- Rugged construction
- Tested to over 100 million operations
- Wide variety of standard levers and actuators available
- Lever external to switch body
- Industry standard mounting holes
- No external terminals — uses standard keyed and locking plug-in connectors
- UL recognized, CSA certified
- Plunger is acetal copolymer. Housing is PBT polyester.

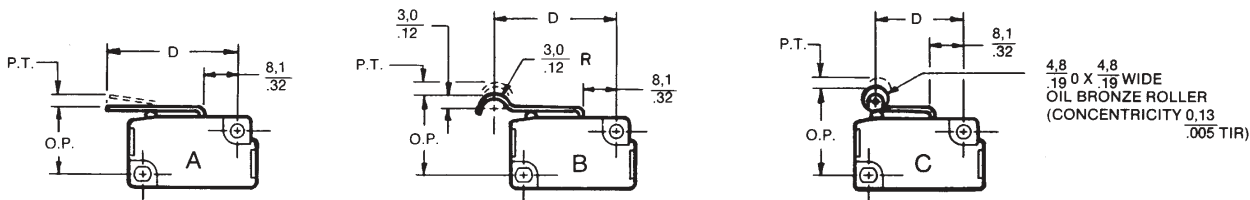
ELECTRICAL SPECIFICATIONS

| | |
|--------------------------|-----------|
| Supply Voltage (VDC) | 4.5 to 24 |
| Supply Current (mA max.) | 15 |
| Output Type | Sink |
| Current per Output (mA) | 10 |

MOUNTING DIMENSIONS (For reference only)



OPERATING CHARACTERISTICS DIMENSIONS



Solid State Sensors

Solid State Basic Switch

VX Series

Characteristics: P.T. — Pretravel; O.T. — Overtravel; D.T. — Differential Travel; O.P. — Operating Position

VX ORDER GUIDE

| Catalog Listings | Operating Force | Lever Actuation Point (D) | Lever Style* | P.T. max mm inches | O.T. min. mm inches | D.T. max. mm inches | O.P. mm inches |
|--------------------------|--------------------------------------|---------------------------|-------------------------|--------------------------|---------------------------|---------------------------|-----------------------------|
| Accepts AMP Conn. | Ounces Newtons | | | | | | |
| VX10 | .35 + .18 (-.14) 0,1 (+.05,-.04) | — | — | 2,16 .085 | 1,02 .040 | 0,30 .012 | 14,73 ± 0,51 .580 ± .020 |
| VX80 | 3.0 ± .88 0,83 ± .24 | — | (Pin Plunger) | | | | |
| VX10-A1 | .35 ± .2 0,1 ± .06 | 21,8 | A (Short) | 2,59 .102 | 1,02 .040 | 0,36 .014 | 15,37 ± 0,69 .605 ± .027 |
| VX80-A1 | 2.8 ± 1.1 .78 ± .31 | .860 | | | | | |
| VX10-A2 | 0.2 ± .1 .06 ± .03 | 35,6 | A (Medium) | 5,33 .210 | 2,16 .085 | 0,71 .028 | 15,34 ± 1,40 .604 ± .055 |
| VX80-A2 | 1.41 ± .50 .39 ± .14 | 1.400 | | | | | |
| VX10-A3 | .10 ± .07 .03 ± .02 | 59,4 | A (Long) | 9,96 .392 | 4,06 .160 | 1,32 .052 | 15,24 ± 2,64 .600 ± .104 |
| VX80-A3 | .75 + .35 (-.25) .21 (+0,1,-.07) | 2.340 | | | | | |
| VX10-B1 | 0.20 + .15 (-.10) .06 (+.04,-.03) | 32,6 | B (Simulated Roller) | 5,21 .205 | 1,91 .075 | 0,64 .025 | 18,52 ± 1,47 .729 ± .058 |
| VX80-B1 | 1.55 ± .53 .43 ± .15 | 1.285 | | | | | |
| VX10-C1 | .40 ± .20 .11 ± .06 | 20,6 | C (Short Roller) | 2,49 .098 | 1,02 .040 | 0,33 .013 | 20,68 ± 0,69 .814 ± .027 |
| VX80-C1 | 3.0 ± 1.06 .83 ± .29 | .810 | | | | | |

* Other lever styles are available. Contact MICRO SWITCH sales office.

Termination

Terminal pins accept AMP connectors (not furnished):

AMP 102241-1

MICRO SWITCH part number:
VX1A — connector & receptacle unassembled.

VX1A-01 — connector & receptacle pre-assembled with 5.4", 24 gauge lead wires.

NOTE: The output transistors of the listings shown are "normally off." They are not conducting and the output voltage is High with plunger in free position. To order devices which are "normally on" and the output voltage is Low (conducting with plunger in free position), change the second digit from 0 to a 1, or a 2 to a 3 in the catalog listing.

Example: VX10-A1 — VX11-A1

Integral Magnet