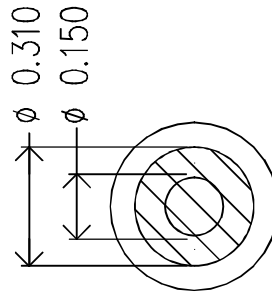
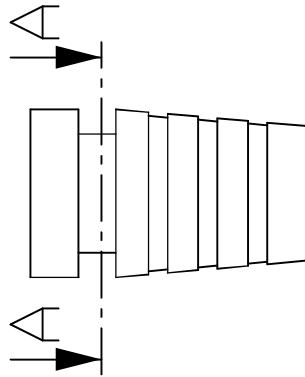
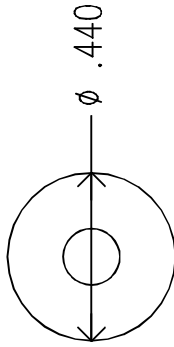
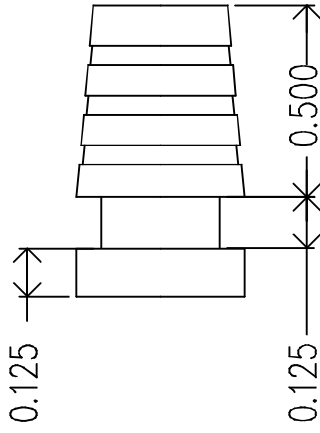
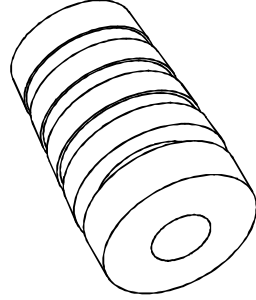


REVISIONS		DATE	APPROVED
ZONE	REV.		



A-A



MOLD MATERIAL: ISC P/N: 5000214, PVC, M1472, BLK, RoHS

DIMENSIONS ARE IN INCHES		NAME	DATE
TOLERANCES:		R FIERRO	12/12/03
FRACTIONAL ±		DRAWN	
ANGULAR: MACH ±	BEND ±	CHECKED	
TWO PLACE DECIMAL ±		ENG APPR.	
THREE PLACE DECIMAL ±		MFG APPR.	
MATERIAL	---	D.A.	
FINISH	---	COMMENTS:	
NEXT ASSY	USED ON		
APPLICATION	DO NOT SCALE DRAWING		

ISC Engineering 4351 Schaefer Ave, Chino, CA 91710 Ph: 909-596-3315 Fax: 909-596-3335 www.iscengineering.com www.overtmoldtooling.com	1461040-150-E-310-440-0
SIZE A	SCALE: 2:1
REV.	WEIGHT:
1460062	SHEET 1 OF 1

Dimensions are subject to change.  
 PROPRIETARY AND CONFIDENTIAL  
 THE INFORMATION CONTAINED IN THIS  
 DRAWING IS THE SOLE PROPERTY OF  
 ISC ENGINEERING. ANY REPRODUCTION IN  
 PART OR AS A WHOLE WITHOUT THE WRITTEN  
 PERMISSION OF ISC ENGINEERING IS  
 PROHIBITED.

