

Benchtop Ionizer Boom Arm Installation Instructions



Made in the
United States of America



Figure 1. SCS 770047 Benchtop Ionizer Boom Arm

Description

The SCS [770047](#) Benchtop Ionizer Boom Arm is designed as a mounting alternative for the SCS 963E Benchtop Air Ionizer. The boom arm saves valuable workspace by allowing the ionizer to be mounted off the worksurface. The articulated movement of the boom arm allows the user to focus the ionizer's output directly onto the desired area. The Benchtop Ionizer Boom Arm includes a C-clamp for ease of installation.

Packaging

- 1 Benchtop Ionizer Boom Arm
- 4 Pan Head Screw, 6/32 x 3/8"
- 4 Nut, 6-32

Installation

1. Secure the boom arm to the worksurface using its C-clamp.
2. Remove the 4 screws located underneath the 963E Benchtop Air Ionizer's to separate its metal bracket from its plastic base plate.



Figure 2. Removing the 4 screws underneath the 963E Benchtop Air Ionizer



Figure 3. Removing the plastic base plate from the 963E Benchtop Air Ionizer

3. Align the boom arm's mounting plate with the hole pattern on the 963E Benchtop Air Ionizer's metal bracket.

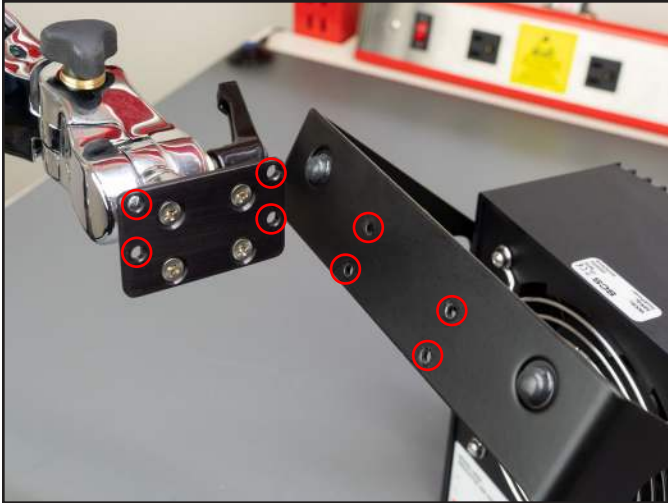


Figure 4. Aligning the boom arm's mounting plate with the 963E Benchtop Air Ionizer's metal bracket

4. Use the 4 included 6-32 pan head screws and nuts to secure the 963E Benchtop Air Ionizer to the boom arm.



Figure 5. Securing the boom arm to 963E Benchtop Air Ionizer's metal bracket

5. Connect the power adapter to the 963E Benchtop Air Ionizer and an appropriate electrical receptacle.



Figure 6. Using the Benchtop Ionizer Boom Arm with the 963E Benchtop Air Ionizer

Specifications

Construction	Metal with springs
Weight	4.8 lbs. (2.2 kg)
Max Extension	38" (965 mm)
Max Weight Capacity	8 lbs. (3.6 kg)
Country of Origin	United States of America

Limited Warranty, Warranty Exclusions, Limit of Liability and RMA Request Instructions

See the SCS Warranty - [StaticControl.com/Limited-Warranty.aspx](https://www.staticcontrol.com/Limited-Warranty.aspx)