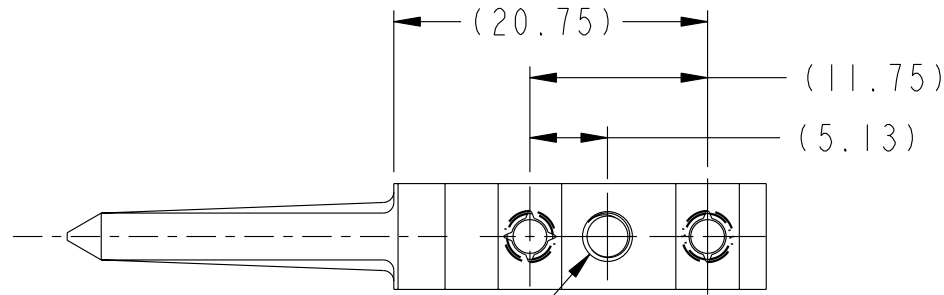
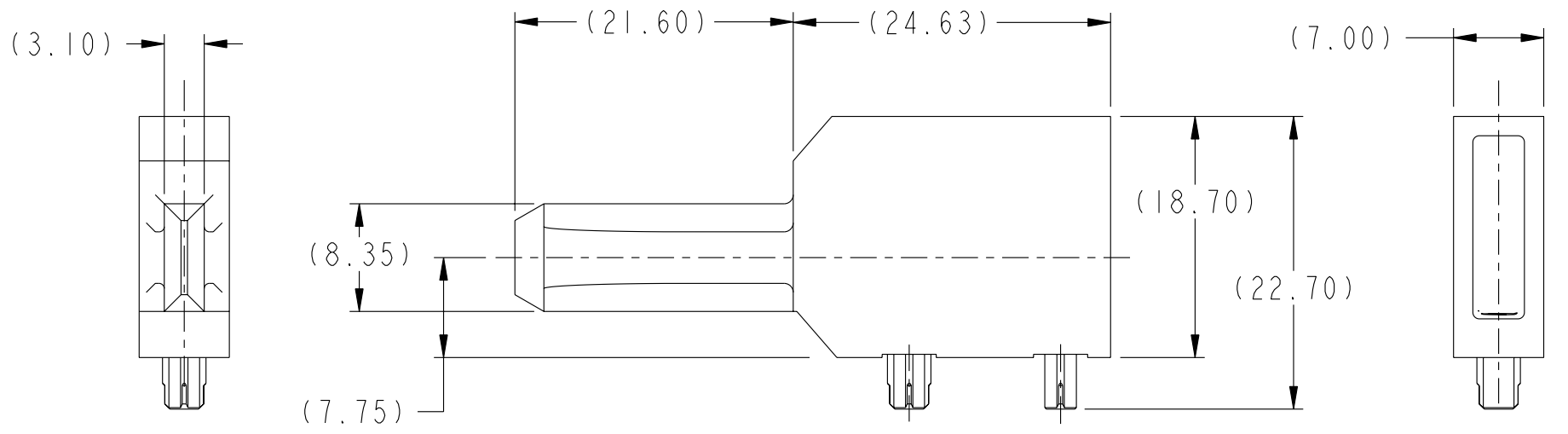




Copyright FCI.



M3 x 0.5-6H
x 3.0 DP.

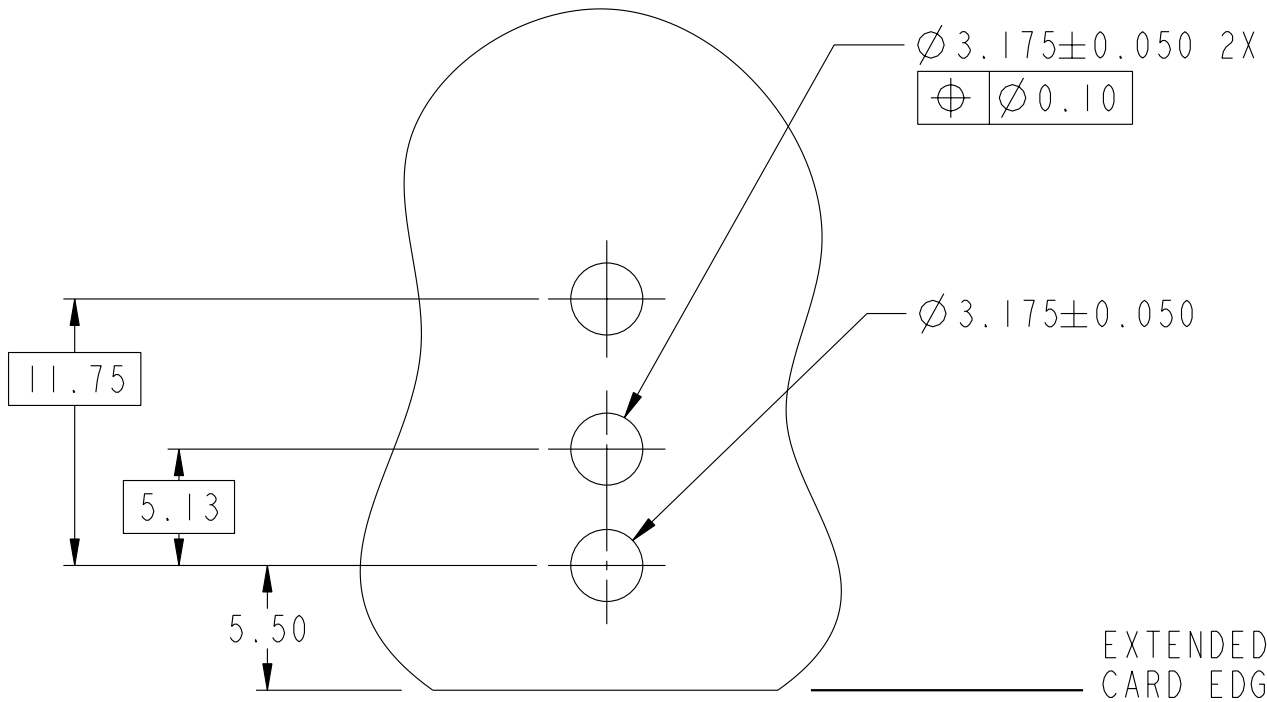
rev	ecn no	dr	date
A	S06-0398	CH	2006-12-01
-	-	-	-
-	-	-	-
-	-	-	-
-	-	-	-
-	-	-	-

www.fciconnect.com		surface 3.2 ASME Y14.5	tolerance std ASME Y14.5	projection mm
TOLERANCES UNLESS OTHERWISE SPECIFIED		0.X ±0.3 0.XX ±0.10 0.XXX ±0.050		size A4 Scale 2:1
Dr	C. H. TAN	2006-03-11	ANGULAR	ECN NEW
Eng	C. H. TAN	2006-03-11	LINEAR	NEW
Chr	C. H. TAN	2006-12-01	0° ±2°	ECN NEW
Appr	JOEY NG	2006-12-01	Product family	Spec ref
FCI		7.2mm R/A GUIDE PIN		Rev. A
		4/5 Pr. INVERSE CO-PLANAR		10063141
catalog no		CUSTOMER		sheet 1 of 2

REV F - 2006-04-17

PART NUMBER

10063141-101LF



RECOMMENDED PCB LAYOUT

SCALE 3:1

SEE NOTE 3, 4, & 5

NOTES:

- ① MATERIAL: ZINC ALLOY.
- ② FINISH: ZINC YELLOW CHROMATE.
- ③ APPLICATION SPECIFICATION: GS-20-045.
- ④ REFER TO CUSTOMER DRAWING 10035911 FOR INFORMATION REGARDING PCB LAYOUT OF POWER AND GUIDE MODULES RELATIVE TO SIGNAL MODULES.
- ⑤ RIGHT ANGLE PIN MODULE HAS THE SAME PCB FOOTPRINT AS THE RIGHT ANGLE GUIDE SOCKET.
- 6 THIS PRODUCT MEETS EUROPEAN UNION DIRECTIVES AND OTHER COUNTRY REGULATIONS AS DESCRIBED IN GS-22-008.
- 7 PACKAGING MEETS GS-14-920 LEAD FREE LABELING SPECIFICATION.



Copyright FCI.

	title	7.2mm R/A GUIDE PIN	dwg no	10063141	Rev.	A
	catalog no	4/5 Pr. INVERSE CO-PLANAR	-	CUSTOMER	sheet 2 of 2	