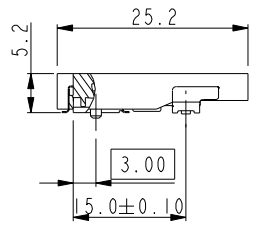
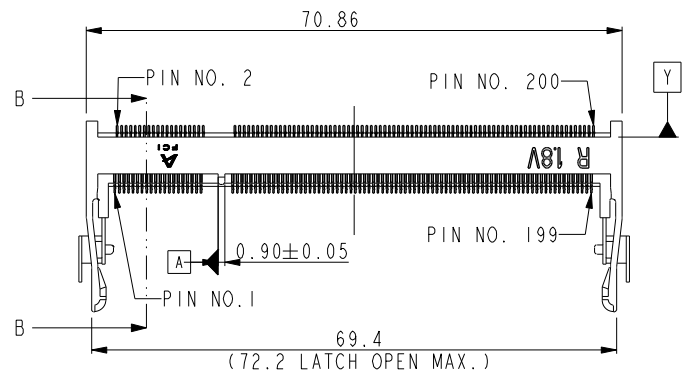
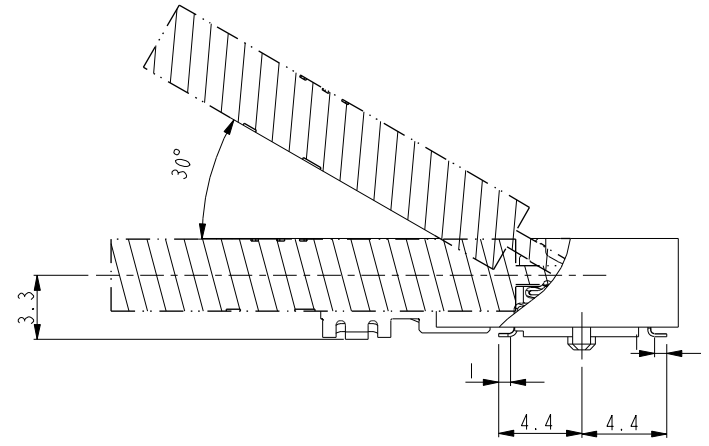
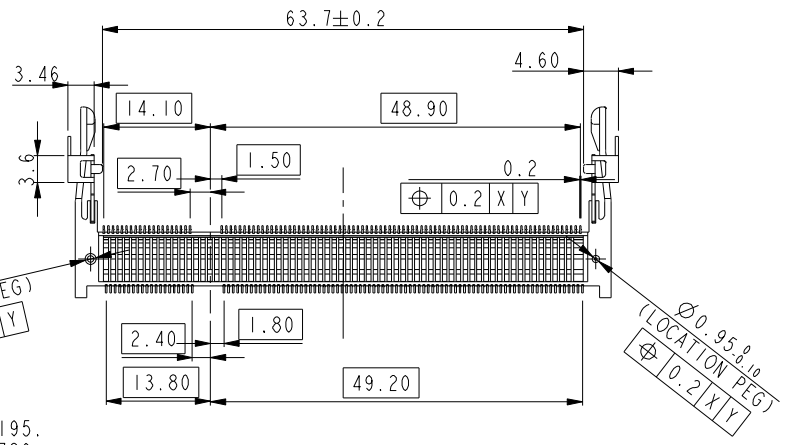
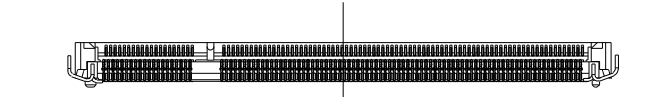




Copyright FCI.



SECTION B-B



- NOTE:
1. PRODUCT SPEC: GS-12-195.
  2. PACKAGE SPEC: GS-14-786.
  3. MATERIAL  
HOUSING: LCP, UL94V-0, BLACK COLOR.  
CONTACT: COPPER ALLOY  
HOLDDOWN: BRASS
  4. FINISH  
TERMINAL :SEE TABLE  
HOLDDOWN: SEE TABLE
  5. COPLANARITY: 0.1MAX. (INCLUDING HOLDDOWN)
  6. THIS PRODUCT MEETS EUROPEAN UNION DIRECTIVES AND OTHER COUNTRY REGULATIONS AS DESCRIBED IN GS-22-008.
  7. THE HOUSING WILL WITHSTAND EXPOSE TO 260° PEAK TEMPERATURE FOR 10 SECENDS IN WAVE SOLDER APPLICATION.
  8. A  $\Delta$  SYMBOL WILL BE NEXT TO ANY DIMENSION, VIEW, OR NOTE WHICH HAS BEEN MODIFIED WITH THE CURRENT DRAWING REVISION.

rev	ecn no	dr	date
A	DG08-0107	J W	05/05/08
B	DG08-0204	B L	09/09/08

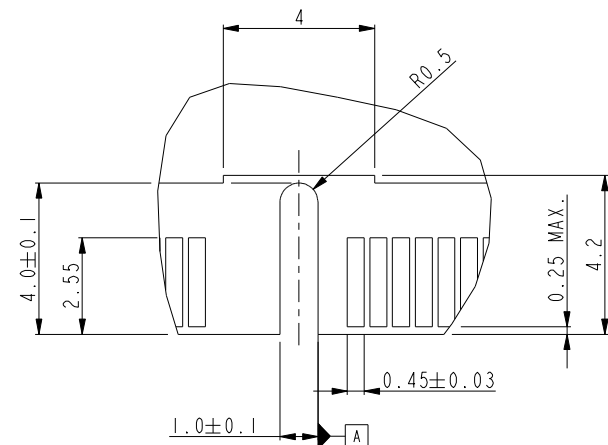
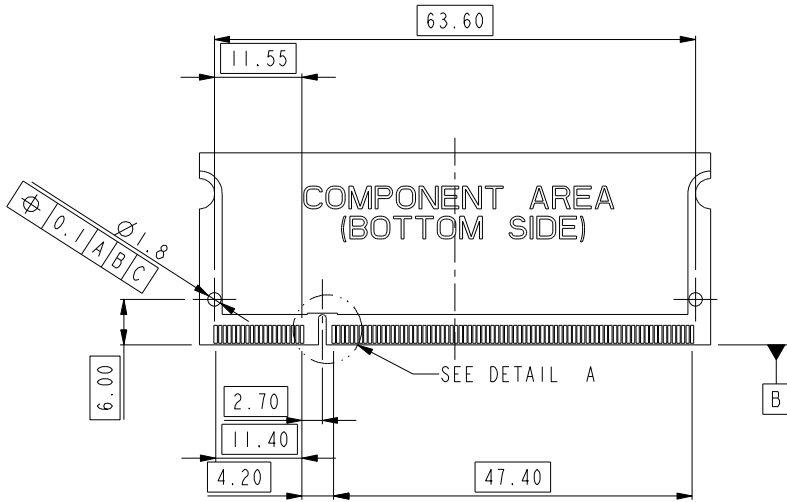
www.fciconnect.com			surface <input checked="" type="checkbox"/>	tolerance std	projection	MM		
			TOLERANCES UNLESS OTHERWISE SPECIFIED					
Dr	JULIA WANG	05/05/08	ANGULAR	LINEAR	0.X	± 0.3	size A4	Scale 1.000
Eng	JULIA WANG	05/05/08			0.XX	± 0.10		
Chr	GARY HSIEH	05/05/08			0.XXX	± 0.05		
Appr	JOSEPH HSIA	05/05/08	Product family			Spec ref	*	
FCI			title DDR2 0.6mm PITCH 200 POS. REVERSE TYPE ASS'Y			dwg no 10086891	Rev. B	
			catalog no	*	CUSTOMER	sheet 1 of 4		

REV F - 2006-04-17

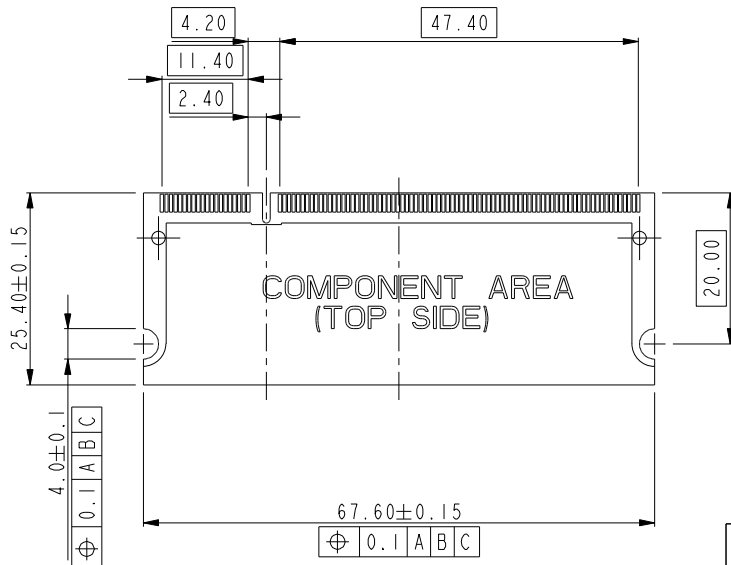
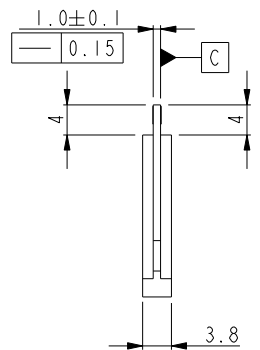


Copyright FCI.

A  
B  
C  
D



DETAIL A  
SCALE 5.000



REV F - 2006-04-17



title DDR2 0.6mm PITCH 200 POS.  
REVERSE TYPE ASS'Y

dwg no 10086891

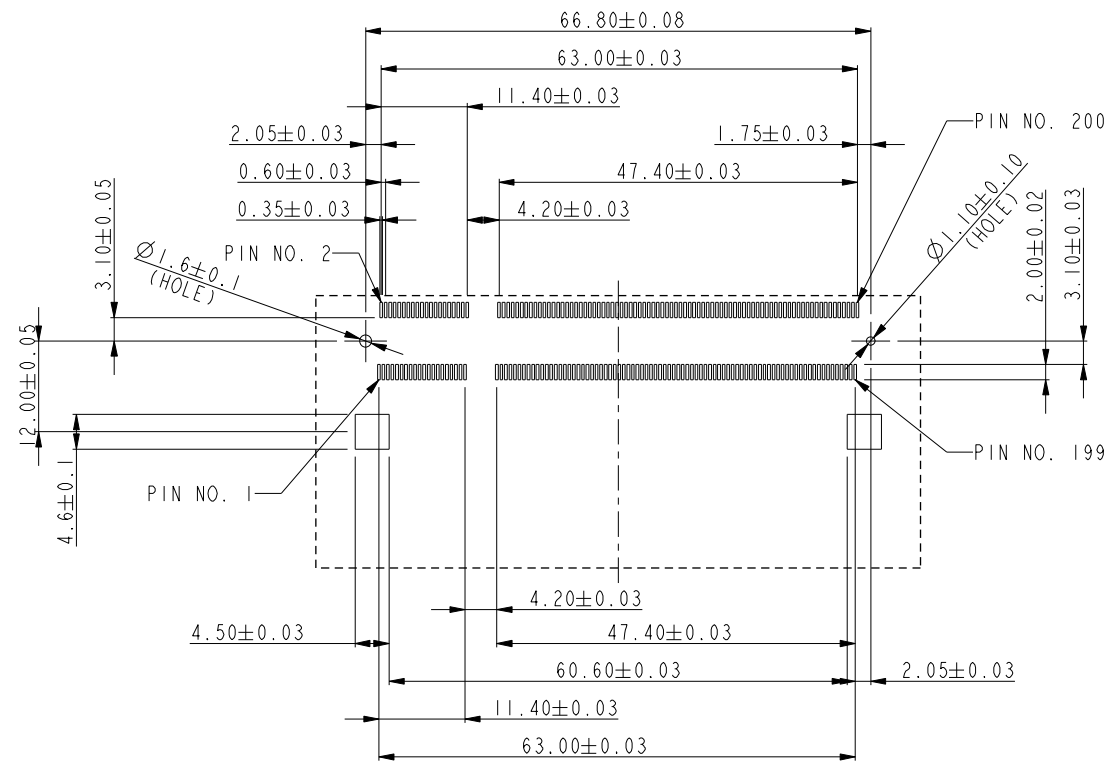
Rev. B

PDM: Rev:B

STATUS Released

4 Printed: Jul 28, 2010

A  
B  
C  
D



RECOMMENDED MOUNTING P.C.B LAYOUT



Copyright FCI.

www.fciconnect.com		surface <input checked="" type="checkbox"/>	tolerance std	projection		
TOLERANCES UNLESS OTHERWISE SPECIFIED						
Dr		ANGULAR	LINEAR	0.X	±	size A4
Eng	JULIA WANG			0.XX	±	Scale 1.000
Chr		0° ± °		0.XXX	±	ECN DG08-0204
Appr		Product family			Spec ref *	
		title		dwg no		Rev.
		DDR2 0.6mm PITCH 200 POS. REVERSE TYPE ASS'Y		10086891		B
		catalog no		* CUSTOMER		sheet 3 of 4

A

B

C

D

A

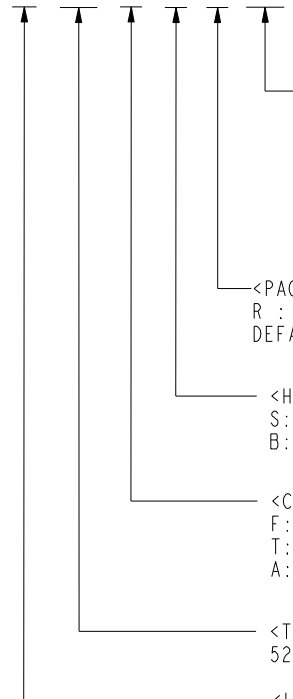
B

C

D

PRODUCT NO.	LOCATION PEG	TERMINAL CONTACT AREA FINISH	HOLD DOWN FINISH	SOLDER TAIL FINISH
10086891-052FSLF	YES	Au FLASH	PURE Sn PLATING	Au FLASH
10086891-152FSLF	NO			
10086891-052TSLF	YES	Au 0.3um MIN.		
10086891-052TSRLF	△ YES			
10086891-152TSLF	NO	Au 0.76um MIN.		
10086891-052ASLF	YES			
10086891-052ASRLF	△ YES	Au FLASH		
10086891-152ASLF	NO			
10086891-052FB	YES	Au FLASH	Sn-Pb PLATING	
10086891-152FB	NO			
10086891-052TB	YES	Au 0.3um MIN.		
10086891-152TB	NO	Au 0.76um MIN.		
10086891-052AB	YES			
10086891-152AB	NO	Au FLASH	PURE Sn PLATING	
10086891-252FSLF	YES			
10086891-352FSLF	NO	Au 0.3um MIN.		
10086891-252TSLF	YES			
10086891-352TSLF	NO	Au 0.76um MIN.		
10086891-252ASLF	YES			
10086891-352ASLF	NO	Au FLASH	PURE Sn PLATING	
10086891-252FB	YES			
10086891-352FB	NO	Au 0.3um MIN.		
10086891-252TB	YES			
10086891-352TB	NO	Au 0.76um MIN.		
10086891-252AB	YES			
10086891-352AB	NO	Au FLASH	Sn-Pb PLATING	
10086891-452FS	YES			
10086891-552FS	NO	Au 0.3um MIN.		
10086891-452TS	YES			
10086891-552TS	NO	Au 0.76um MIN.		
10086891-452AS	YES			
10086891-552AS	NO	Au FLASH	Sn-Pb PLATING	
10086891-452FB	YES			
10086891-552FB	NO	Au 0.3um MIN.		
10086891-452TB	YES			
10086891-552TB	NO	Au 0.76um MIN.		
10086891-452AB	YES			
10086891-552AB	NO			

10086891-X XX X X X LF



FOR Rohs OPTIONS: TAIL PLATING CODE MUST BE 0~3. HOLD DOWN PLATING CODE MUST BE "S". "LF" CODE IS EXIST IN THE END. EX: 10086891-252TSLF FOR NOT Rohs COMPATIBEL: THIS "LF" CODE IS "BLANK". EX: 10086891-452TS

<PACKING METHOD>  
R : TAPE REEL  
DEFAULT: TRAY △

<HOLDDOWN FINISH>  
S: PURE Sn  
B: Sn-Pb

<CONTACT FINISH>  
F: Au FLASH  
T: Au 0.3um MIN.  
A: Au 0.76um MIN.

<TOTAL HEIGHT>  
52: 5.2mm

<LOCATION PEG, SOLDER TAIL FINISH>  
0: YES, Au FLASH  
1: NO, Au FLASH  
2: YES, PURE Sn PLATING  
3: NO, PURE Sn PLATING  
4: YES, Sn-Pb PLATING  
5: NO, Sn-Pb PLATING



Copyright FCI.



title DDR2 0.6mm PITCH 200 POS.  
REVERSE TYPE ASS'Y  
catalog no \*

dwg no 10086891  
CUSTOMER sheet 4 of 4

Rev. B