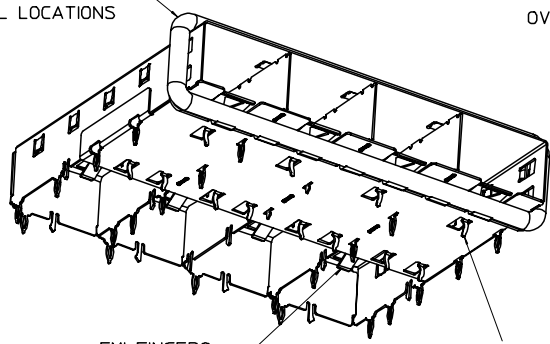


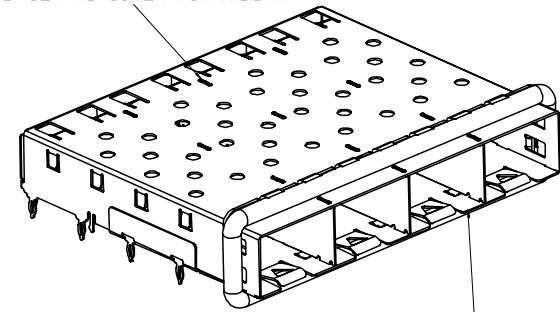
360° ELASTOMER GASKET  
COMPLIES WITH (SFP) MSA  
BOARD AND BEZEL LOCATIONS

INNER WALL TABS ARE COINED  
OVER BASE AND COVER FOR RIGIDITY

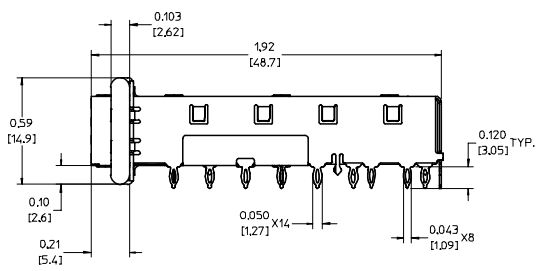
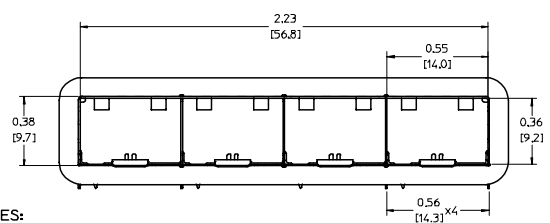


EMI FINGERS  
CONTACT ADAPTER

12 UNDER BELLY EMI PINS



DIMENSIONS OF EACH INNER CAGE DESIGNED  
TO FUNCTION WITH SMALL FORM-FACTOR  
PLUGGABLE (SFP) TRANSCEIVER



NOTES:

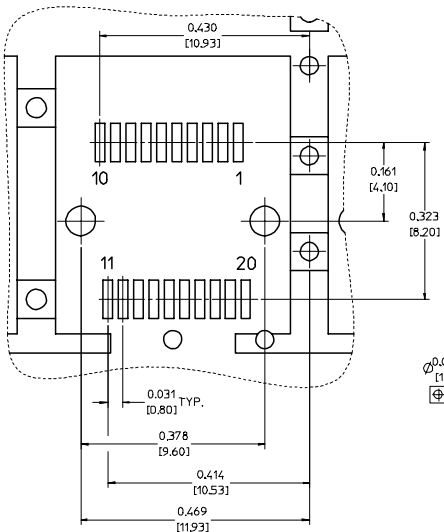
1. PRESS FIT LEGS 0.120" LONG-  
0.062 [1.57] MINIMUM PCB THICKNESS. FOR SINGLE SIDED USE ONLY.
2. MATERIAL: COPPER ALLOY  
PLATING: NONE
- NOTE: A PRE-PLATED NICKEL VERSION IS AVAILABLE.  
REFER TO DOCUMENT SD-74728-420
3. REFERENCE DOCUMENTS:  
PRODUCT SPECIFICATION: PS-74728-000  
COSMETIC SPECIFICATIONS: WI-HP-7-2774 AND WI-HPA-7-0093  
TEST SUMMARY: TS-74728-0415
4. MATES WITH SERIES 74728. LIGHT PIPE COVER ASSEMBLY.
5. THIS PART MEETS THE RESTRICTION OF HAZARDOUS SUBSTANCES IN  
ELECTRICAL AND ELECTRONIC EQUIPMENT (ROHS) DIRECTIVE (2002/95/EC).

EC NO: USY2006-0225 DRW:KSIMONSO06/01/24 CHKD:BRUSSELL2006/01/24 APPR:BRUSSELL2006/01/25	QUALITY SYMBOLS	GENERAL TOLERANCES (UNLESS SPECIFIED)	SCALE 3:1	DESIGN UNITS METRIC	THIRD ANGLE PROJECTION	REVISE ON CAD ONLY
	0.0 0.1 0.2	4 PLACES ± --- ± --- 3 PLACES ± --- ± .005 2 PLACES ± 0.13 ± .01 1 PLACE ± 0.25 ± ---	DIMENSION STYLE IN/MM		TITLE	
		ANGULAR ± 1°	DRAWN BY DATE		1X4 SFP CAGE ASSEMBLY W/ PRESS FIT PINS, FRAME W/ TABS	
		DRAFT WHERE APPLICABLE MUST REMAIN WITHIN DIMENSIONS	KSIMONSO 2004/08/27		MOLEX INCORPORATED	
REV			BRUSSELL 2004/09/23	APPROVED BY DATE	MATERIAL NO. DOCUMENT NO.	SHEET NO.
				BRUSSELL 2004/09/23	739270416 SD-73927-416	1 OF 4
THIS DRAWING CONTAINS INFORMATION THAT IS PROPRIETARY TO MOLEX INCORPORATED AND SHOULD NOT BE USED WITHOUT WRITTEN PERMISSION						

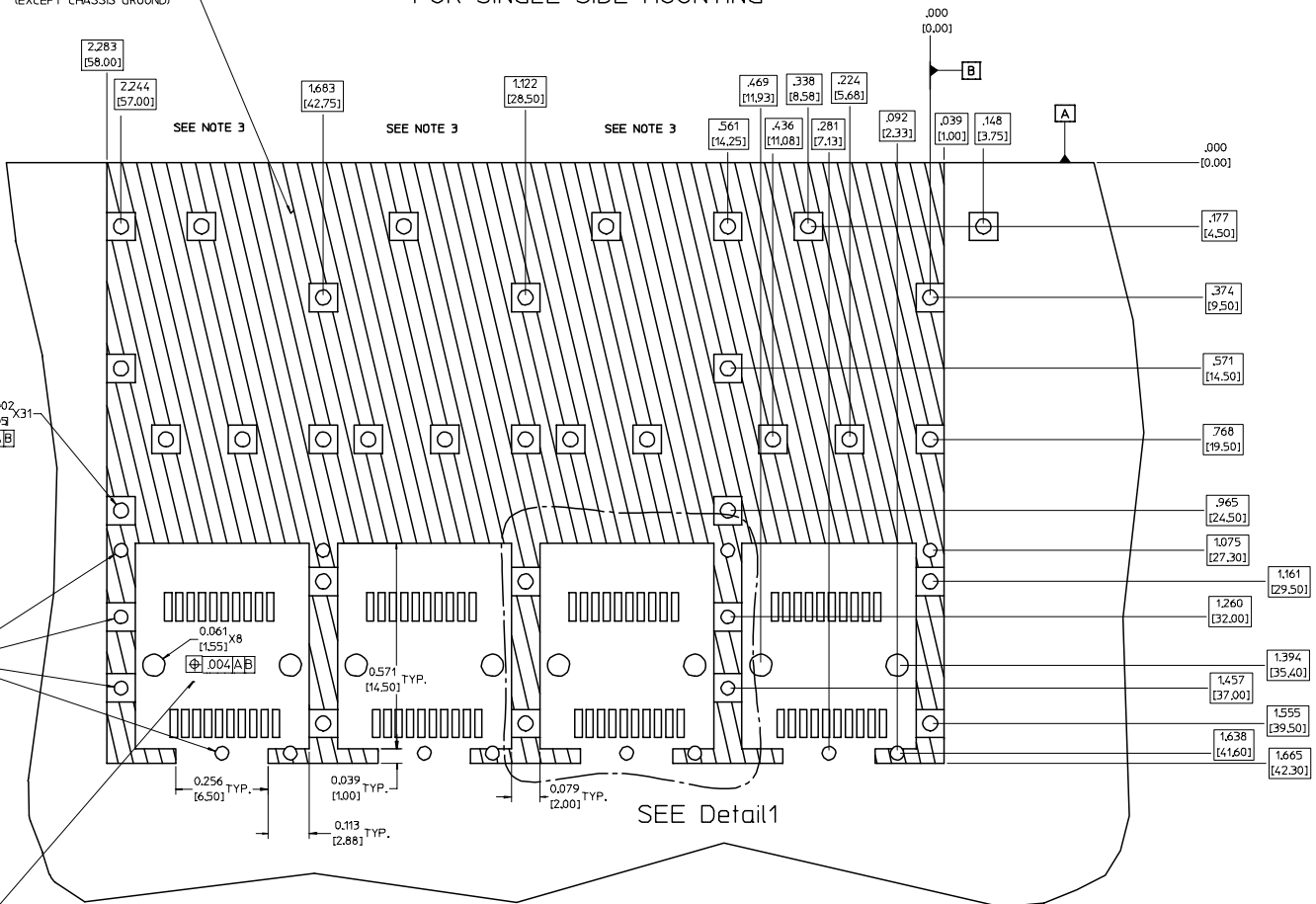
20 19 18 17 16 15 14 13 12 11 10 9 8 7 6 5 4 3 2 1

### PCB LAYOUT FOR SINGLE SIDE MOUNTING

Detail1  
SCALE 8:1



CROSS-HATCHED AREA DENOTES  
COMPONENT AND TRACE KEEP-OUT  
(EXCEPT CHASSIS GROUND)



SMALLER HOLE ON  
THESE FOUR ROWS ONLY

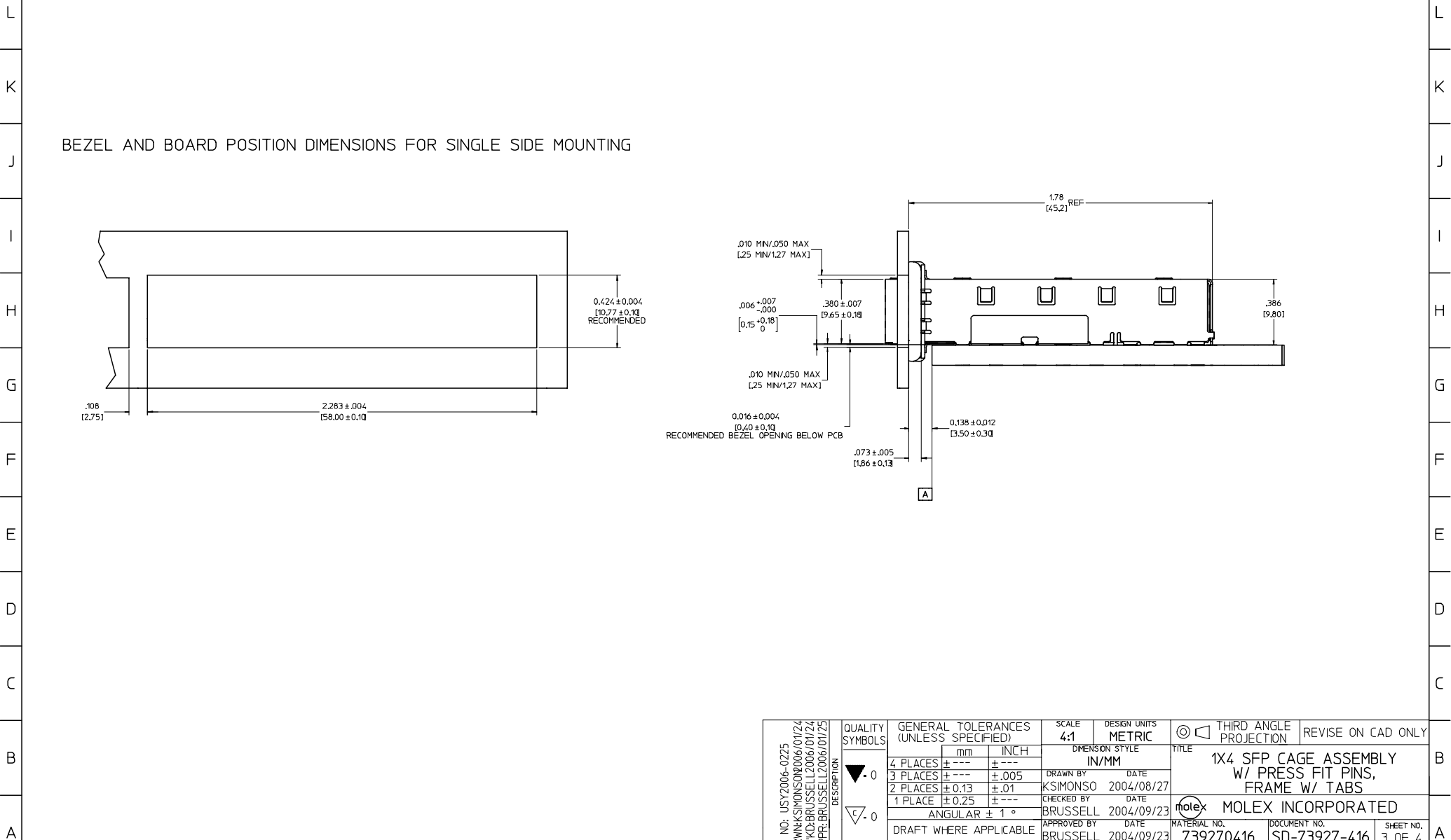
THIS AREA DENOTES  
COMPONENT KEEP-OUT  
(TRACES ALLOWED)

- NOTES:
- PADS AND VIAS GO TO CHASSIS GROUND, (34 PLACES).  
RECOMMENDED PADS TO BE 2mm SQUARE.
  - PLATING OPTIONAL FOR THROUGH HOLES, (12 PLACES).
  - HOLE PATTERN REPEATS FOR EACH PORT,  
SPACING BETWEEN PORTS IS 14.25mm.

EC NO: USY2006-0225 DRW:KSIMONSON006/01/24 CHKD:BRUSSELL2006/01/24 APPR:BRUSSELL2006/01/25 REV: B DESCRIPTION	QUALITY SYMBOLS	GENERAL TOLERANCES (UNLESS SPECIFIED)	SCALE 6:1	DESIGN UNITS METRIC	THIRD ANGLE PROJECTION	REVISE ON CAD ONLY
	▽ 0	4 PLACES ± --- ± --- 3 PLACES ± --- ± .005	mm INCH	DIMENSION STYLE IN/MM	TITLE	
	∇ 0	2 PLACES ± 0.13 ± .01 1 PLACE ± 0.25 ± ---		DRAWN BY DATE K SIMONSON 2004/08/27	1X4 SFP CAGE ASSEMBLY W/ PRESS FIT PINS, FRAME W/ TABS	
		ANGULAR ± 1 °		CHECKED BY DATE BRUSSELL 2004/09/23	MOLEX INCORPORATED	
	DRAFT WHERE APPLICABLE MUST REMAIN WITHIN DIMENSIONS		APPROVED BY DATE BRUSSELL 2004/09/23	MATERIAL NO. 739270416	DOCUMENT NO. SD-73927-416	SHEET NO. 2 OF 4
			THIS DRAWING CONTAINS INFORMATION THAT IS PROPRIETARY TO MOLEX INCORPORATED AND SHOULD NOT BE USED WITHOUT WRITTEN PERMISSION			

19 18 17 16 15 14 13 12 11 10 9 8 7 6 5 4 3 2 1

20 19 18 17 16 15 14 13 12 11 73927 9 8 7 6 5 4 3 2 1



BEZEL AND BOARD POSITION DIMENSIONS FOR SINGLE SIDE MOUNTING

EC NO: USY2006-0225 DRW:K.SIMONSON06/01/24 CHK:D.BRUSSELL2006/01/24 APPR:BRUSSELL2006/01/25 REV DESCRIPTION	QUALITY SYMBOLS	GENERAL TOLERANCES (UNLESS SPECIFIED)		SCALE 4:1	DESIGN UNITS METRIC	THIRD ANGLE PROJECTION	REVISE ON CAD ONLY
	▴ .0 ▽ .0	4 PLACES	mm	INCH	DIMENSION STYLE IN/MM		TITLE 1X4 SFP CAGE ASSEMBLY W/ PRESS FIT PINS, FRAME W/ TABS MOLEX INCORPORATED
		3 PLACES	± .005	± .005	DRAWN BY K.SIMONSON	DATE 2004/08/27	
		2 PLACES	± 0.13	± .01	CHECKED BY BRUSSELL	DATE 2004/09/23	
	1 PLACE	± 0.25	± .01	APPROVED BY BRUSSELL	DATE 2004/09/23	MATERIAL NO. 739270416	DOCUMENT NO. SD-73927-416
		ANGULAR ± 1°		DRAFT WHERE APPLICABLE MUST REMAIN WITHIN DIMENSIONS		SHEET NO. 3 OF 4	
THIS DRAWING CONTAINS INFORMATION THAT IS PROPRIETARY TO MOLEX INCORPORATED AND SHOULD NOT BE USED WITHOUT WRITTEN PERMISSION							

19 18 17 16 15 14 13 12 11 10 9 8 7 6 5 4 3 2 1

20 | 19 | 18 | 17 | 16 | 15 | 14 | 13 | 12 | 11 | 73927 | 9 | 8 | 7 | 6 | 5 | 4 | 3 | 2 | 1

DATE	REV	CHANGES	COMMENTS
2004/08/27	1	PRELIMINARY DOCUMENT	N/A
2004/09/23	A	INITIAL RELEASE	N/A
2006/01/20	B	UPDATED NOTES	DOCUMENT CHANGE ONLY

L  
K  
J  
I  
H  
G  
F  
E  
D  
C  
B  
A

L  
K  
J  
I  
H  
G  
F  
E  
D  
C  
B  
A

EC NO: USY2006-0225 DRW:KSIMONSO06/01/24 CHK:D:BRUSSELL2006/01/24 APPR:BRUSSELL2006/01/25 REV B	QUALITY SYMBOLS	GENERAL TOLERANCES (UNLESS SPECIFIED)	SCALE 1:1	DESIGN UNITS METRIC	THIRD ANGLE PROJECTION	REVISE ON CAD ONLY															
	▽.0	<table border="1"> <thead> <tr> <th></th> <th>mm</th> <th>INCH</th> </tr> </thead> <tbody> <tr> <td>4 PLACES</td> <td>±.001</td> <td>±.0005</td> </tr> <tr> <td>3 PLACES</td> <td>±.002</td> <td>±.001</td> </tr> <tr> <td>2 PLACES</td> <td>±.005</td> <td>±.002</td> </tr> <tr> <td>1 PLACE</td> <td>±.012</td> <td>±.005</td> </tr> </tbody> </table>		mm	INCH	4 PLACES	±.001	±.0005	3 PLACES	±.002	±.001	2 PLACES	±.005	±.002	1 PLACE	±.012	±.005	DIMENSION STYLE IN/MM	TITLE 1X4 SFP CAGE ASSEMBLY W/ PRESS FIT PINS, FRAME W/ TABS		
		mm	INCH																		
	4 PLACES	±.001	±.0005																		
3 PLACES	±.002	±.001																			
2 PLACES	±.005	±.002																			
1 PLACE	±.012	±.005																			
∇.0	ANGULAR ± 1°	DRAFT WHERE APPLICABLE MUST REMAIN WITHIN DIMENSIONS	APPROVED BY BRUSSELL 2004/09/23	DATE 2004/09/23	MATERIAL NO. 739270416	DOCUMENT NO. SD-73927-416															
			THIS DRAWING CONTAINS INFORMATION THAT IS PROPRIETARY TO MOLEX INCORPORATED AND SHOULD NOT BE USED WITHOUT WRITTEN PERMISSION		SHEET NO. 4 OF 4	D															

19 | 18 | 17 | 16 | 15 | 14 | 13 | 12 | 11 | 10 | 9 | 8 | 7 | 6 | 5 | 4 | 3 | 2 | 1