

FEATURES

- LTE Protocols
- Dual Band Frequencies
- RoHS Compliant

APPLICATION

- Meters
- Gateways
- Routers

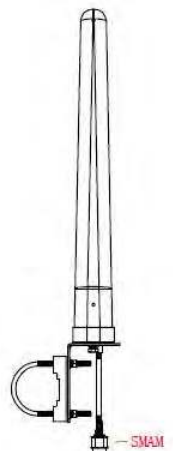
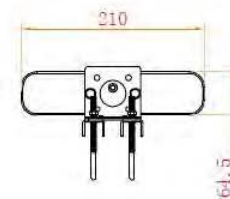
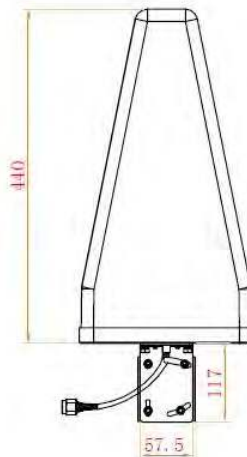


RoHS Compliant
includes all homogeneous materials
(see part numbering system for details)

SPECIFICATIONS

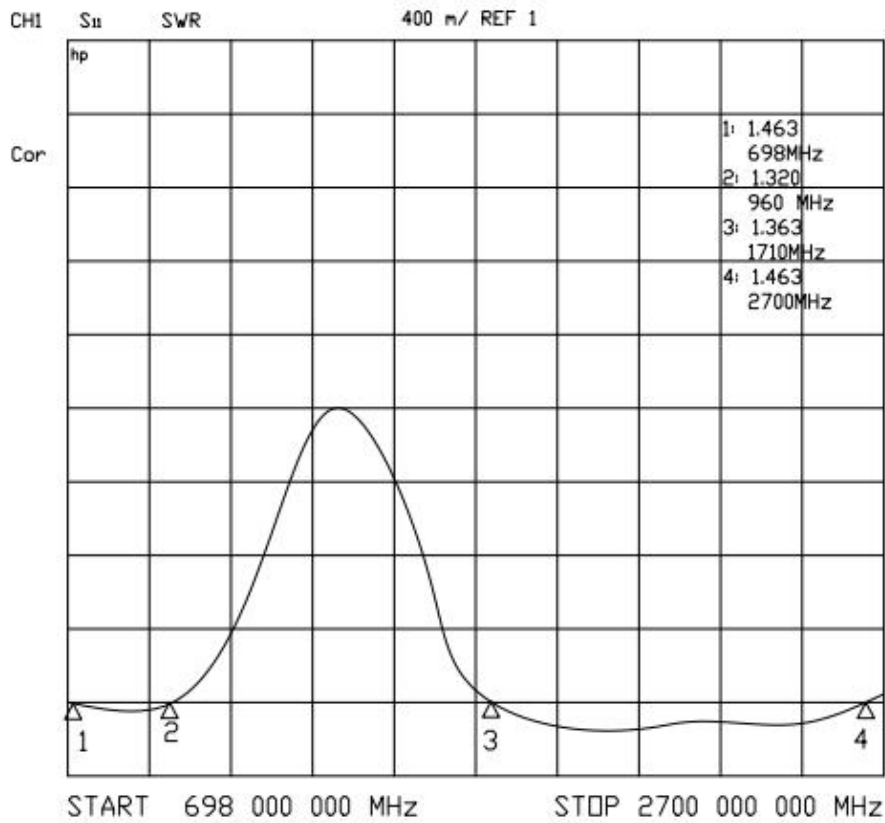
Electrical	
Frequency Range	698~960MHz / 1710~2700MHz
Bandwidth	262/ 990 MHz
Polarization	Vertical / Horizontal
Gain	11 / 15 dBi
F/B Ratio	> 16dB
Horizontal Beam Width	90°
Vertical Beam Width	60°
V.S.W.R	≤1.5
Radiation	Direction
Maximum Input Power	50W
Impedance	50Ω
Dimensions (mm):	
Length	440
Width	210
Height	64.5
Connection Type	SMA Male
Cable	RG58
Mounting	Pole

NAN-E 440210 B2 A M E F
 ↳ F = RoHS compliant
 ↳ E = RG58 Cable
 ↳ M = SMA connector
 ↳ A = REV 1 (See Page 4)
 ↳ B2 = 2 Frequency Bands
 ↳ 440210 = Size (440 mm x 210 mm)
 ↳ NAN-E = Series

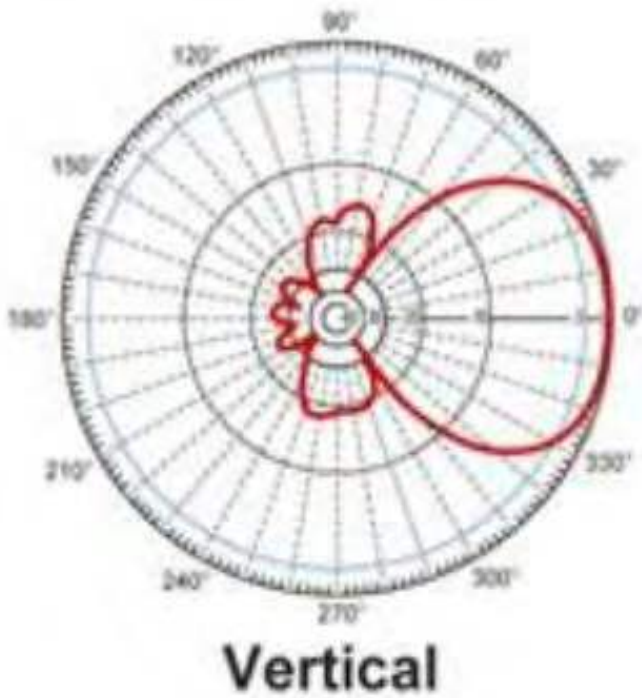
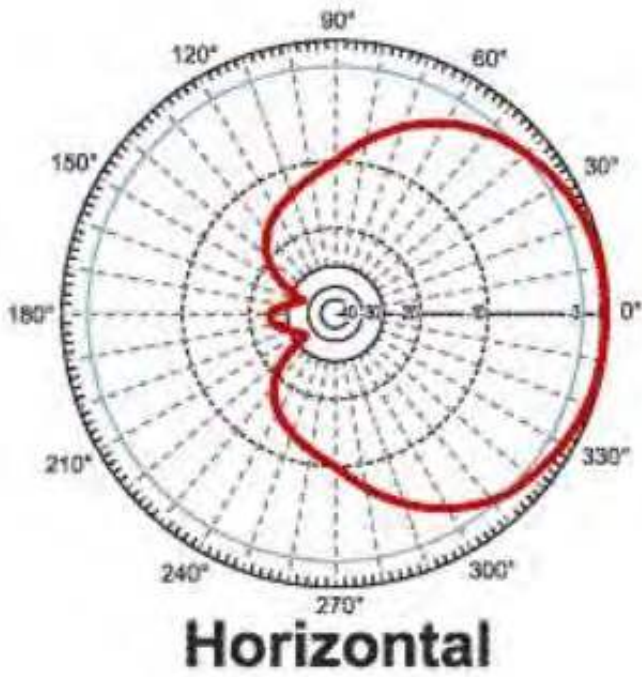


Environmental	
Operating Temperature	-40°C~+80°C
Storage Temperature	-40°C - +80°C
RoHS Compliant	Yes

VSWR



RADIATION PATTERN



Revision History and Status

Revision	Date Issued	Details	Status
A	Dec 4 th , 2020	Initial Release	Supported

- NIC Technical Support: tpmg@niccomp.com
- Compliance Support: rohs@niccomp.com