



# *SAW Components*

*Data Sheet B3589*

Data Sheet

A large, stylized, 3D-rendered graphic of the EPCOS logo. The letters "EPCOS" are rendered in a bold, sans-serif font, appearing to be part of a curved, metallic-looking structure. The background is dark and textured, suggesting a globe or a complex circuit board layout.



**SAW Components**

**B3589**

**Low-loss Filter**

**864,00 MHz**

**Data Sheet**

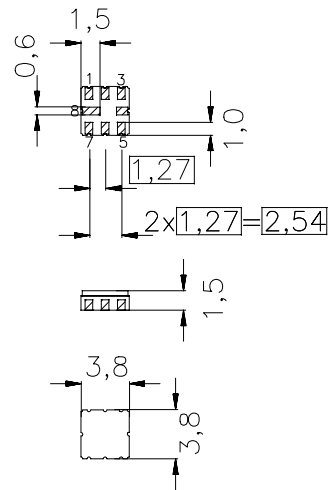
**Features**

- Low loss RF filter for wireless audio application
- Low amplitude ripple
- High image frequency suppression
- No matching network required for operation at 50 Ω
- Package for **Surface Mounted Technology (SMT)**

**Terminals**

- Ni, gold-plated

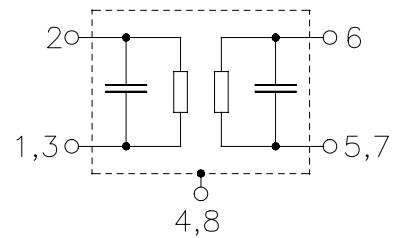
Ceramic package **QCC8B**



Dimensions in mm, approx. weight 0,07 g

**Pin configuration**

- 2 Input
- 1,3 Input Ground
- 6 Output
- 5,7 Output Ground
- 4,8 to be grounded



| Type  | Ordering code     | Marking and Package according to | Packing according to |
|-------|-------------------|----------------------------------|----------------------|
| B3589 | B39861-B3589-Z810 | C61157-A7-A46                    | F61074-V8037-Z000    |

Electrostatic Sensitive Device (ESD)

**Maximum ratings**

|                            |           |         |     |                       |
|----------------------------|-----------|---------|-----|-----------------------|
| Operable temperature range | $T$       | 0/+40   | °C  | source impedance 50 Ω |
| Storage temperature range  | $T_{stg}$ | -40/+85 | °C  |                       |
| DC voltage                 | $V_{DC}$  | 0       | V   |                       |
| Source power               | $P_S$     | 0       | dBm |                       |



Data Sheet

**Characteristics**

Operating temperature range:  $T = 0 \dots 40 \text{ }^\circ\text{C}$

Terminating source impedance:  $Z_S = 50 \text{ } \Omega$

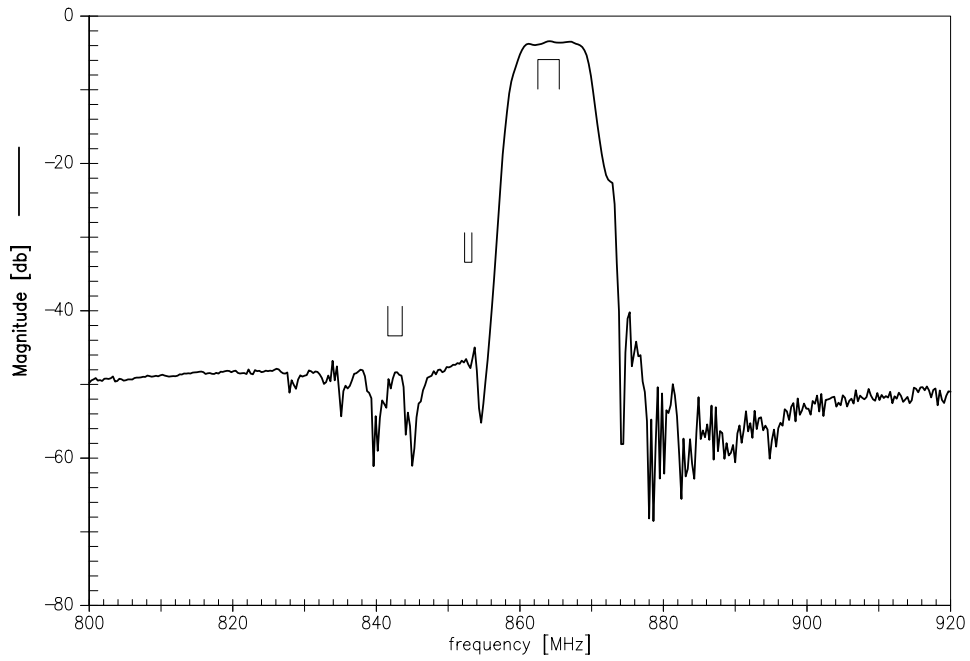
Terminating load impedance:  $Z_L = 50 \text{ } \Omega$

|  |                       | min. | typ.   | max. |       |
|--|-----------------------|------|--------|------|-------|
| <b>Center frequency</b>  | $f_c$                 | —    | 864,00 | —    | MHz   |
| <b>Maximum insertion attenuation</b>                                 | $\alpha_{\max}$       |      |        |      |       |
|  | 862,50 ... 865,50 MHz | —    | 4,0    | 6,0  | dB    |
| <b>Amplitude ripple</b>  | $\Delta\alpha$        |      |        |      |       |
|  | 862,50 ... 865,50 MHz | —    | 1,5    | 2,5  | dB    |
| <b>Relative attenuation (relative to <math>\alpha_{\max}</math>)</b> | $\alpha_{\text{rel}}$ |      |        |      |       |
|  | 841,60 ... 843,60 MHz | 40,0 | 44,0   | —    | dB    |
|  | 852,30 ... 853,30 MHz | 30,0 | 38,0   | —    | dB    |
| <b>Temperature coefficient of frequency</b>                          | $TC_f$                | —    | -30    | —    | ppm/K |

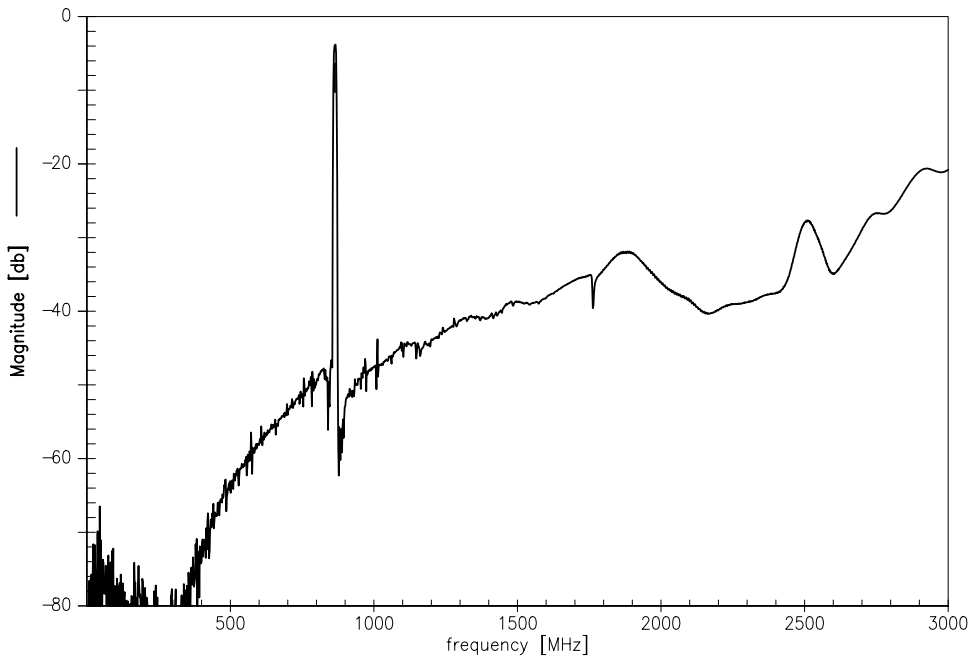


Data Sheet

Transfer function



Transfer function (wideband)





**SAW Components**

**B3589**

**Low-loss Filter**

**864,00 MHz**

Data Sheet

**Published by EPCOS AG**

**Surface Acoustic Wave Components Division, SAW CE AE**

**P.O. Box 80 17 09, 81617 Munich, GERMANY**

©.EPCOS AG 2002. Reproduction, publication and dissemination of this brochure and the information contained therein without EPCOS' prior express consent is prohibited.

Purchase orders are subject to the General Conditions for the Supply of Products and Services of the Electrical and Electronics Industry recommended by the ZVEI (German Electrical and Electronic Manufacturers' Association), unless otherwise agreed.

This brochure replaces the previous edition.

For questions on technology, prices and delivery please contact the Sales Offices of EPCOS AG or the international Representatives.

Due to technical requirements components may contain dangerous substances. For information on the type in question please also contact one of our Sales Offices.