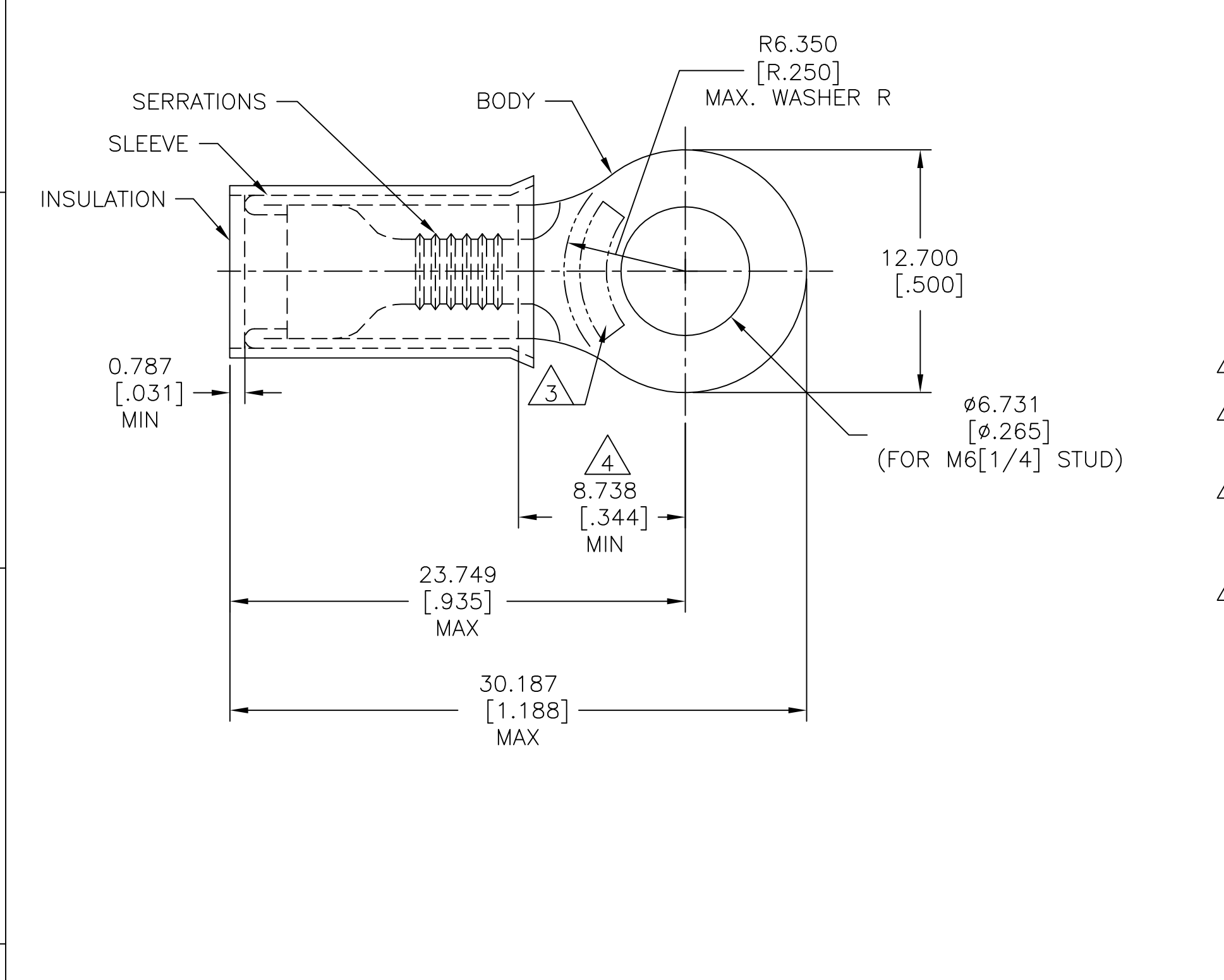


| REVISIONS | | | | |
|-----------|-----|---------------------------|-----------|-------|
| P | LTR | DESCRIPTION | DATE | APVD |
| | J2 | REDRAWN PER ECO-17-007400 | 11DEC2017 | RS DR |



| | | |
|--------------------------------|--------------------------------|--------------------------------|
| AMP WIRE RANGE | Listed FILE E13288 | LR7189 Certified |
| 12-10 AWG SOLID OR STRANDED | 12-10 AWG SOLID OR STRANDED | 12-10 AWG SOLID OR STRANDED |

- 1 FOR $\phi 3.810[\phi.150]$ TO $\phi 5.842[\phi.230]$ INSULATION.
- 2 BODY MATERIAL THICKNESS: $1.016 \pm 0.051[.040 \pm .002]$
- 3 STAMP AMP 12-10* APPROX AS SHOWN.
- 4 APPLIES FROM EDGE OF METAL WIRE BARREL TO CENTER OF STUD HOLE.
- 5 MATERIAL:
BODY & SLEEVE: COPPER PER ASTM B152
INSULATION: NYLON.
- 6 FINISH:
BODY & SLEEVE: TIN PLATE PER ASTM B545
INSULATION: COLOR-YELLOW.

| | | |
|------|--------------|-----------|
| 2500 | ON TAPE | 2-35273-2 |
| 500 | LOOSE PIECE | 35273 |
| QTY. | PACKAGE TYPE | PART NO. |

| | | | | | | | | | |
|--|--|---|--|--|-------------------------------------|---|-----------|------------|---------------|
| AMP INCORPORATED CUSTOMER SERVICE SYSTEMS | | MAX RECOMMENDED OPERATING TEMPERATURE: 105°C [221°F] | THIS DRAWING IS A CONTROLLED DOCUMENT. | | DWN RAVI S 11DEC2017 | TE Connectivity | | | |
| FOR ADDITIONAL PRODUCT INFORMATION OR COPIES OF DRAWINGS AND TECHNICAL DOCUMENTS | PRODUCT INFORMATION CENTER 1-800-522-6752 | VOLTAGE RATING: 300 V MAX | DIMENSIONS: mm [INCHES] | TOLERANCES UNLESS OTHERWISE SPECIFIED: | CHK ROHDE DANIEL F 11DEC2017 | | | | NAME |
| FOR APPLICATION TOOLING INFORMATION | TOOLING ASSISTANCE CENTER 1-800-722-1111 | CIRCULAR MIL AREA: 2.62-6.64mm² [5,180-13,100] SOLID OR STRANDED | | 0 PLC ± - 1 PLC ± - 2 PLC ± - 3 PLC ± 0.127[.005] 4 PLC ± - ANGLES ± 5° | APVD ROHDE DANIEL F 11DEC2017 | WIRE TERMINAL, P.I.D.G, RING TONGUE, WIRE SIZE: 12-10 | | | |
| FOR ORDER ENTRY | 1-800-526-5142 | THIS DRAWING IS A CONTROLLED DOCUMENT FOR AMP INCORPORATED. IT IS SUBJECT TO CHANGE AND THE CONTROLLING ENGINEERING ORGANIZATION SHOULD BE CONTACTED FOR THE LATEST REVISION. | MATERIAL 5 | FINISH 6 | PRODUCT SPEC UL 486 A-B | SIZE | CAGE CODE | DRAWING NO | RESTRICTED TO |
| | | | | | 114-2157 | A3 | 00779 | C=35273 | |
| | | | | | CUSTOMER DRAWING | SCALE | 4:1 | SHEET | 1 OF 1 |
| | | | | | | | | REV | J2 |