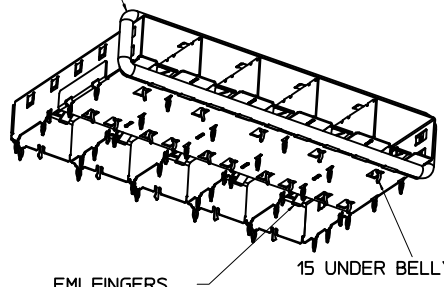


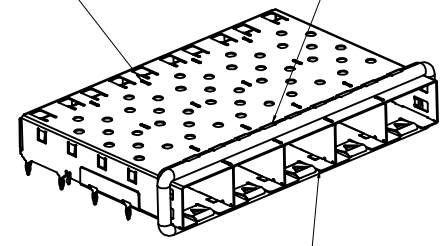
360° ELASTOMER EMI GASKET COMPLIES WITH (SFP) MSA BOARD AND BEZEL LOCATIONS

GASKET SEAM LOCATED ON TOP OF CAGE

INNER WALL TABS ARE COINED OVER BASE AND COVER FOR RIGIDITY



15 UNDER BELLY EMI PINS



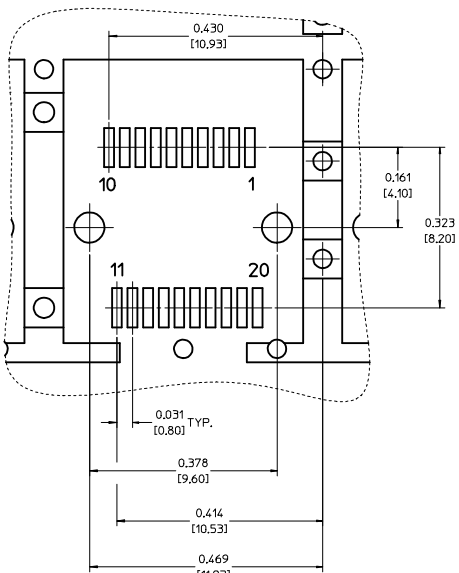
DIMENSIONS OF EACH INNER CAGE DESIGNED TO FUNCTION WITH SMALL FORM-FACTOR PLUGGABLE (SFP) TRANSCEIVER

NOTES:

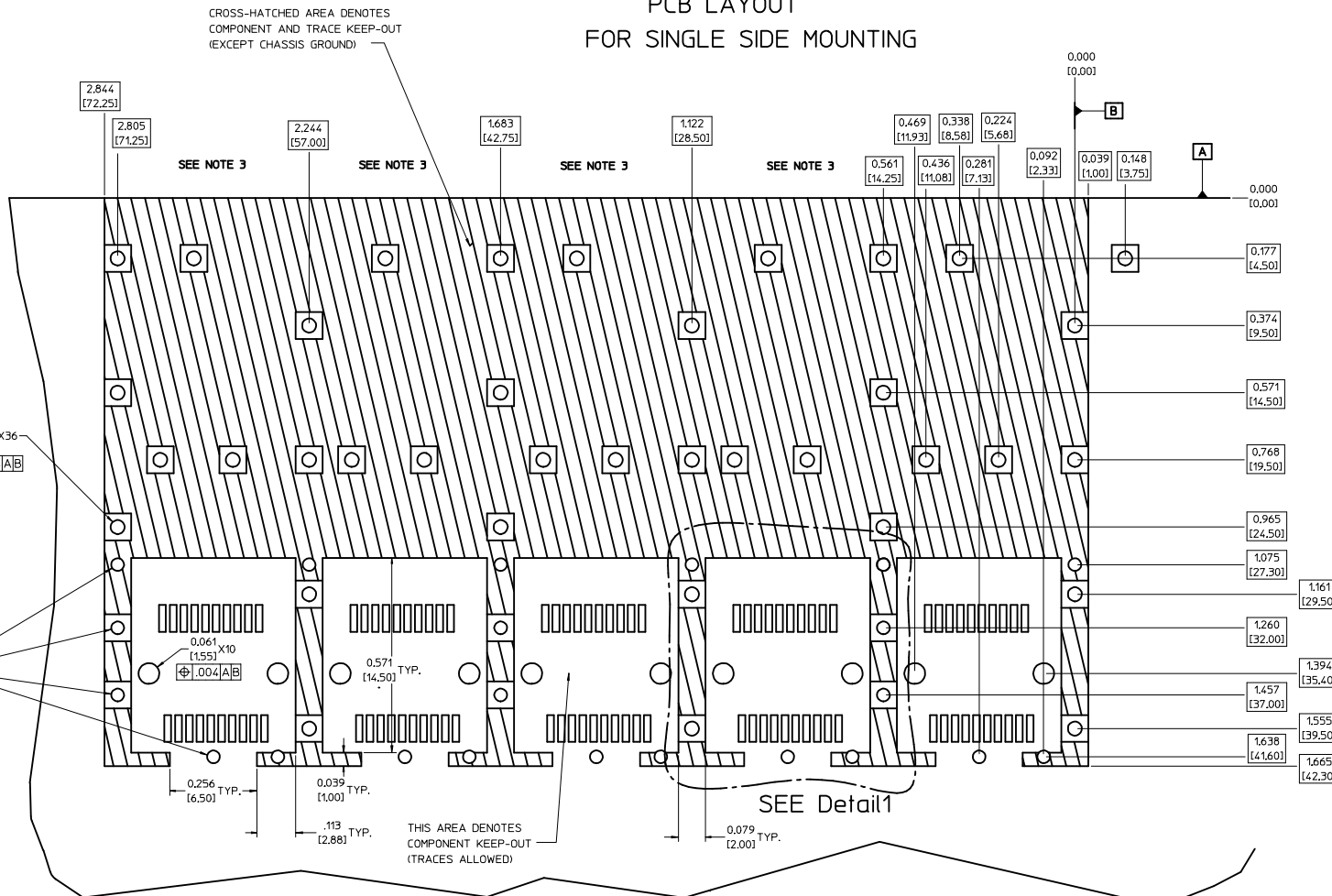
- PRESS FIT LEGS .120" LONG-  
0.062 [1.57] MINIMUM PCB THICKNESS FOR SINGLE SIDED USE ONLY.  
THIS CAGE IS NOT DESIGNED FOR USE IN BELLY-TO-BELLY APPLICATIONS.
- MATERIAL: COPPER ALLOY  
PLATING: PRE-PLATED NICKEL
- REFERENCE DOCUMENTS:  
PRODUCT SPECIFICATIONS: PS-74728-000  
COSMETIC SPECIFICATIONS: WI-HP-7-2774 ADN WI-HPA-7-0093
- MATES WITH SERIES 74729, LIGHT PIPE COVER ASSEMBLY.
- THIS PART MEETS THE RESTRICTION OF HAZARDOUS SUBSTANCES IN ELECTRICAL AND ELECTRONIC EQUIPMENT (ROHS) DIRECTIVE (2002/95/EC).

ENTER DESCRIPTION EC NO: USY2006-0216 DRAWN BY: KSI MONSON CHKD BY: CHYKARUSSELL APPR: BRUSSELL DATE: 2006/01/18 DATE: 2006/01/20 DATE: 2006/01/25	QUALITY SYMBOLS	GENERAL TOLERANCES (UNLESS SPECIFIED)	DIMENSION STYLE	SCALE	DESIGN UNITS	THIRD ANGLE PROJECTION	
	▼=0 ▽=0	mm ± .01 INCH ± .005	IN/MM	3:1	METRIC		
	4 PLACES ± .01 3 PLACES ± .005 2 PLACES ± .013 1 PLACE ± 0.25	DRAWN BY: KSI MONSON CHECKED BY: BRUSSELL APPROVED BY: BRUSSELL DATE: 2005/10/22 DATE: 2005/10/22 DATE: 2005/10/22	TITLE	1X5 SFP GANGED CAGE ASSY, FRAME W/ TABS, PRE-PLATED			
	ANGULAR ± 1°	MATERIAL NO. 747230004 DOCUMENT NO. SD-74723-004	MOLEX INCORPORATED	SHEET NO. 1 OF 4			
DRAFT WHERE APPLICABLE MUST REMAIN WITHIN DIMENSIONS		THIS DRAWING CONTAINS INFORMATION THAT IS PROPRIETARY TO MOLEX INCORPORATED AND SHOULD NOT BE USED WITHOUT WRITTEN PERMISSION					

Detail1  
SCALE 8:1



# PCB LAYOUT FOR SINGLE SIDE MOUNTING

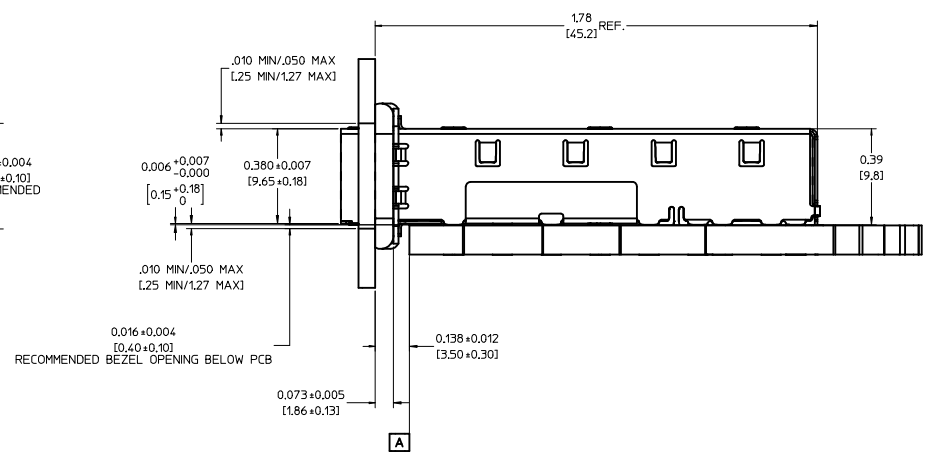
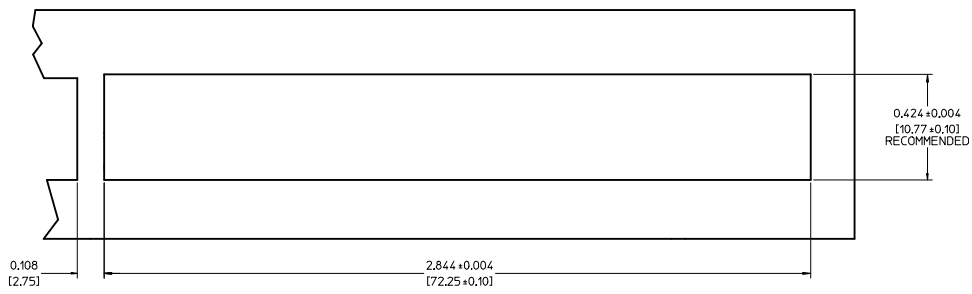


**NOTES:**

- 1. PADS AND VIAS GO TO CHASSIS GROUND, (42 PLACES).  
RECOMMENDED PADS TO BE 2mm SQUARE.
- 2. PLATING OPTIONAL FOR THROUGH HOLES, (16 PLACES).
- 3. RECOMMENDED PLATING INCLUDES HASL, IMMERSION (GOLD, SILVER, OR TIN), AND OSP.
- 4. HOLE PATTERN REPEATS FOR EACH PORT,  
SPACING BETWEEN PORTS IS 0.561/[14.25].
- 5. CONNECTOR PAD LAYOUT PER SFP MSA. WILL ACCOMODATE MOLEX  
CONNECTOR SERIES 74441 OR EQUIVALENT.

<b>ENTER DESCRIPTION</b> IEC NO.: USY2006-0216 DRAWN BY: MONSON 2006/01/18 CHK'D BY: BRUSSELL 2006/01/20 APPR'D BY: BRUSSELL 2006/01/25 REV:	<b>QUALITY SYMBOLS</b> ▽=0 ▽=0	<b>GENERAL TOLERANCES (UNLESS SPECIFIED)</b> <table border="1"> <tr> <th></th> <th>mm</th> <th>INCH</th> </tr> <tr> <td>4 PLACES ±</td> <td>---</td> <td>---</td> </tr> <tr> <td>3 PLACES ±</td> <td>---</td> <td>±.005</td> </tr> <tr> <td>2 PLACES ±</td> <td>±.13</td> <td>±.01</td> </tr> <tr> <td>1 PLACE ±</td> <td>±.25</td> <td>±---</td> </tr> </table>		mm	INCH	4 PLACES ±	---	---	3 PLACES ±	---	±.005	2 PLACES ±	±.13	±.01	1 PLACE ±	±.25	±---	<b>DIMENSION STYLE</b> IN/MM DRAWN BY: DATE KS IMONSON 2005/10/22 CHECKED BY: DATE BRUSSELL 2005/10/22 APPROVED BY: DATE BRUSSELL 2005/10/22	<b>SCALE</b> 6:1 <b>DESIGN UNITS</b> METRIC <b>THIRD ANGLE PROJECTION</b>	<b>TITLE</b> 1X5 SFP GANGED CAGE ASSY. FRAME W/ TABS, PRE-PLATED
		mm	INCH																	
	4 PLACES ±	---	---																	
	3 PLACES ±	---	±.005																	
2 PLACES ±	±.13	±.01																		
1 PLACE ±	±.25	±---																		
<b>DRAFT WHERE APPLICABLE MUST REMAIN WITHIN DIMENSIONS</b>	<b>MATERIAL NO.</b> 747230004	<b>DOCUMENT NO.</b> SD-74723-004	<b>SHEET NO.</b> 2 OF 4																	
<b>MOLEX INCORPORATED</b>																				
THIS DRAWING CONTAINS INFORMATION THAT IS PROPRIETARY TO MOLEX INCORPORATED AND SHOULD NOT BE USED WITHOUT WRITTEN PERMISSION																				

BEZEL AND BOARD POSITION DIMENSIONS FOR SINGLE SIDE MOUNTING



<b>ENTER DESCRIPTION</b> EC NO: USY2006-0216 DRAWN BY: JIMONSON 2006/01/18 CHECKED BY: CHYKBRUSSELL 2006/01/20 APPROVED BY: APPR:BRUSSELL 2006/01/25 REV: A	<b>QUALITY SYMBOLS</b> ▽=0 ▽=0	<b>GENERAL TOLERANCES (UNLESS SPECIFIED)</b> 4 PLACES ± --- ± --- 3 PLACES ± --- ± .005 2 PLACES ± .13 ± .01 1 PLACE ± 0.25 ± --- ANGULAR ± 1°	<b>DIMENSION STYLE</b> IN/MM	SCALE 4:1 DESIGN UNITS METRIC THIRD ANGLE PROJECTION	
	DRAWN BY: KS IMONSON 2005/10/22 CHECKED BY: BRUSSELL 2005/10/22 APPROVED BY: BRUSSELL 2005/10/22	DATE: 2005/10/22 DATE: 2005/10/22 DATE: 2005/10/22	MATERIAL NO. 747230004 DOCUMENT NO. SD-74723-004	TITLE: 1X5 SFP GANGED CAGE ASSY, FRAME W/ TABS, PRE-PLATED	SHEET NO. 3 OF 4
	DRAFT WHERE APPLICABLE MUST REMAIN WITHIN DIMENSIONS				THIS DRAWING CONTAINS INFORMATION THAT IS PROPRIETARY TO MOLEX INCORPORATED AND SHOULD NOT BE USED WITHOUT WRITTEN PERMISSION
	MOLEX INCORPORATED				MOLEX

20 19 18 17 16 15 14 13 12 11 10 9 8 7 6 5 4 3 2 1

DATE	REV	CHANGES	COMMENTS
2005/06/09	1	PRELIMINARY DOCUMENT	N/A
2005/10/22	A	INITIAL RELEASE	N/A

<b>ENTER DESCRIPTION</b> IEC NO: USY2006-0216 DRAWN BY: SIMONSON 2006/01/18 CHECKED BY: CHYKORUSSELL 2006/01/20 APPROVED BY: BRUSSELL 2006/01/25	QUALITY SYMBOLS ▽=0 ▽=0	GENERAL TOLERANCES (UNLESS SPECIFIED) <table border="1"> <thead> <tr> <th></th> <th>mm</th> <th>INCH</th> </tr> </thead> <tbody> <tr> <td>4 PLACES</td> <td>±.005</td> <td>±.0005</td> </tr> <tr> <td>3 PLACES</td> <td>±.005</td> <td>±.0005</td> </tr> <tr> <td>2 PLACES</td> <td>±0.13</td> <td>±.01</td> </tr> <tr> <td>1 PLACE</td> <td>±0.25</td> <td>±.01</td> </tr> </tbody> </table> ANGULAR ± 1°		mm	INCH	4 PLACES	±.005	±.0005	3 PLACES	±.005	±.0005	2 PLACES	±0.13	±.01	1 PLACE	±0.25	±.01	DIMENSION STYLE IN/MM DRAWN BY: SIMONSON DATE: 2005/10/22 CHECKED BY: BRUSSELL DATE: 2005/10/22 APPROVED BY: BRUSSELL DATE: 2005/10/22	SCALE 1:1 DESIGN UNITS METRIC THIRD ANGLE PROJECTION	TITLE 1X5 SFP GANGED CAGE ASSY. FRAME W/ TABS, PRE-PLATED
		mm	INCH																	
	4 PLACES	±.005	±.0005																	
	3 PLACES	±.005	±.0005																	
2 PLACES	±0.13	±.01																		
1 PLACE	±0.25	±.01																		
MATERIAL NO. 747230004	DOCUMENT NO. SD-74723-004	MOLEX INCORPORATED																		
SIZE D	THIS DRAWING CONTAINS INFORMATION THAT IS PROPRIETARY TO MOLEX INCORPORATED AND SHOULD NOT BE USED WITHOUT WRITTEN PERMISSION																			
		DRAFT WHERE APPLICABLE MUST REMAIN WITHIN DIMENSIONS			SHEET NO. 4 OF 4															

19 18 17 16 15 14 13 12 11 10 9 8 7 6 5 4 3 2 1