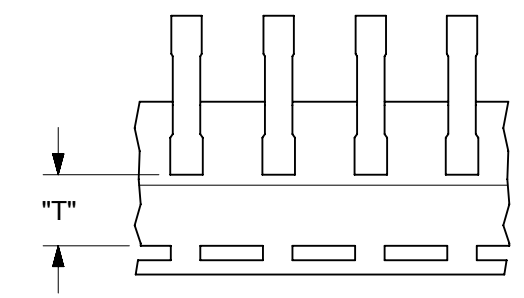
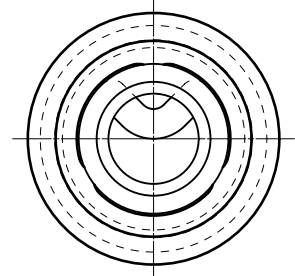
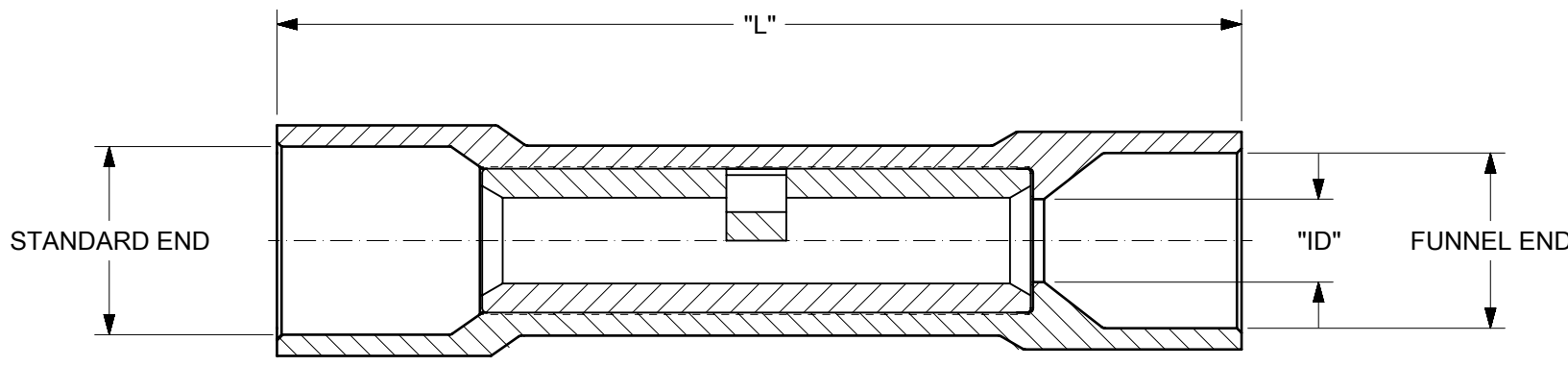


MATERIAL NUMBER	ALTERNATE NUMBER	WIRE SIZE AWG	INSULATION COLOR	CONNECTOR ID	MAX. WIRE INSUL. DIA.		LENGTH "L"	TAPE HEIGHT "T"	DESCRIPTION
					STANDARD END	FUNNEL END			
192020010	AS-932	22-18	LIGHT RED	.061 (1.55)	.161 (4.09)	.147 (3.73)	1.07 (27.18)	----	LOOSE PIECE
192020011	AS-932-DK	22-18	DARK RED	.061 (1.55)	.161 (4.09)	.147 (3.73)	1.07 (27.18)	----	LOOSE PIECE
192020012	AS-932-DKT	22-18	DARK RED	.061 (1.55)	.161 (4.09)	.147 (3.73)	1.07 (27.18)	.480 (12.19)	TAPE MOUNTED
192020026	BS-942	16-14	LIGHT BLUE	.087 (2.21)	.199 (5.05)	.185 (4.70)	1.07 (27.18)	----	LOOSE PIECE
192020030	BS-942T	16-14	LIGHT BLUE	.087 (2.21)	.199 (5.05)	.185 (4.70)	1.07 (27.18)	.480 (12.19)	TAPE MOUNTED
192020027	BS-942-DK	16-14	DARK BLUE	.087 (2.21)	.199 (5.05)	.185 (4.70)	1.07 (27.18)	----	LOOSE PIECE
192020029	BS-942-DKT	16-14	DARK BLUE	.087 (2.21)	.199 (5.05)	.185 (4.70)	1.07 (27.18)	.480 (12.19)	TAPE MOUNTED
192020028	BS-942-DKBT	16-14	DARK BLUE	.087 (2.21)	.199 (5.05)	.185 (4.70)	1.07 (27.18)	.480 (12.19)	TAPE MOUNTED LARGE REEL
192020131	BS-942-B	16-14	BLUE	.087 (2.21)	.199 (5.05)	.185 (4.70)	1.07 (27.18)	----	LOOSE PIECE
192020130	BS-942-BBT	16-14	BLUE	.087 (2.21)	.199 (5.05)	.185 (4.70)	1.07 (27.18)	.480 (12.19)	TAPE MOUNTED LARGE REEL
192020045	CS-952	12-10	YELLOW	.138 (3.51)	.276 (7.01)	.262 (6.65)	1.15 (29.21)	----	LOOSE PIECE
192020046	CS-952-DK	12-10	DARK YELLOW	.138 (3.51)	.276 (7.01)	.262 (6.65)	1.15 (29.21)	----	LOOSE PIECE
192020047	CS-952-DKT	12-10	DARK YELLOW	.138 (3.51)	.276 (7.01)	.262 (6.65)	1.15 (29.21)	.440 (11.18)	TAPE MOUNTED
192020048	CS-952-DKBT	12-10	DARK YELLOW	.138 (3.51)	.276 (7.01)	.262 (6.65)	1.15 (29.21)	.440 (11.18)	TAPE MOUNTED LARGE REEL
192020141	CS-952 BULK	12-10	YELLOW	.138 (3.51)	.276 (7.01)	.262 (6.65)	1.15 (29.21)	----	BULK PACKED, 2500 PER PACKAGE
192020142	CS-952 -DK BULK	12-10	DARK YELLOW	.138 (3.51)	.276 (7.01)	.262 (6.65)	1.15 (29.21)	----	BULK PACKED, 2500 PER PACKAGE



PARTS ON TAPE

- NOTE(S):
 1. MATERIAL: COPPER
 2. PLATING: ELECTRO-TIN
 3. INSULATION: 6/6 NYLON
 4. PARTS ARE ROHS COMPLIANT.

THIS DRAWING CONTAINS INFORMATION THAT IS PROPRIETARY TO MOLEX ELECTRONIC TECHNOLOGIES, LLC AND SHOULD NOT BE USED WITHOUT WRITTEN PERMISSION										
SYMBOLS	DIMENSION UNITS	SCALE		CURRENT REV DESC: MIGRATE TO NX & UPDATE VIEW						
	IN/MM	NTS		EC NO: 629174 DRWN: DMYRICK 2019/12/04 CHK'D: DMYRICK 2019/12/17 APPR: GROJAS01 2019/12/18						
GENERAL TOLERANCES (UNLESS SPECIFIED)										
▽ = 0	4 PLACES	±		MM	INCH	INITIAL REVISION: DRWN: HBEITZEL 2000/07/18 APPR: RDEROSS 2000/07/18				
▽ = 0	3 PLACES	±		± 0.005						
▽ = 0	2 PLACES	±	0.13	±	0.01	PRODUCT CUSTOMER DRAWING DOCUMENT NUMBER: SD-19202-001 DOC TYPE: PSD DOC PART: 001 REVISION: A2				
▽ = 0	1 PLACE	±	0.25	±						
▽ = 0	0 PLACES	±		±		MATERIAL NUMBER: SEE CHART CUSTOMER: GENERAL MARKET SHEET NUMBER: 1 OF 1				
▽ = 0	ANGULAR TOL		±	0.5°						
■ = 0	DRAFT WHERE APPLICABLE MUST REMAIN WITHIN DIMENSIONS			THIRD ANGLE PROJECTION		DRAWING	SERIES	B-SIZE 19202		
▽ = 0										