

THIS COPY IS PROVIDED ON A RESTRICTED BASIS AND IS NOT TO BE USED IN ANY WAY DETRIMENTAL TO THE INTERESTS OF PANDUIT CORP.

PANDUIT P/N	WEIGHT
P24G07M-XYZ	SEE SHEET 2

SPECIFICATION:

1. STANDARD:
 UNIT TYPE: MONITORED & SWITCHED PER OUTLET
 ORIENTATION: VERTICAL, 0U FULL
 OUTLET QTY & TYPE: (18)C13, (6) C19
 INPUT VOLTAGE: 200-240/346-415VAC
 INPUT CURRENT: 16A
 BREAKER QTY & TYPE: N/A
 INPUT PHASE: THREE-PHASE WYE
 RATED POWER: 11.0kVA
 INPUT PLUG: IEC 60309 3P+N+E 6H 16A
 INPUT POWER CORD: SEE SHEET 2 FOR PART NUMBER TABLE
 REGULATORY STANDARD: RoHS COMPLIANT
2. ADDITIONAL:
 NONE
3. ACCESSORIES:
 (1) QUICK-START GUIDE

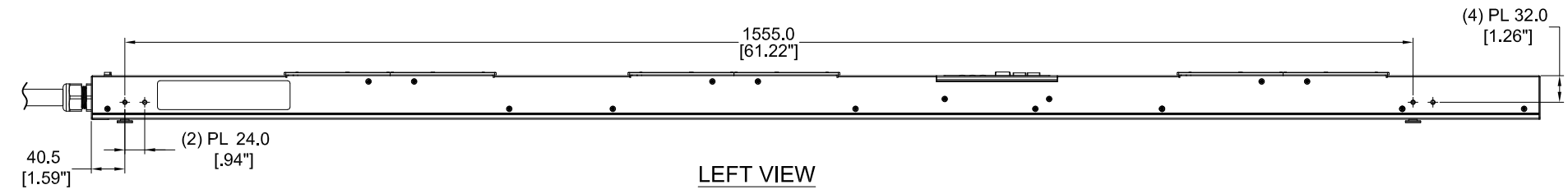
NOTES:

- PRIMARY DIMENSIONS ARE IN MILLIMETERS. SECONDARY DIMENSION ARE IN [INCHES].
- INSTALLATION SHALL COMPLY WITH ALL APPLICABLE NATIONAL, STATE, AND LOCAL CODES .
- VISIT OUR ON-LINE CATALOG AT WWW.PANDUIT.COM FOR A CURRENT LIST OF PRODUCTS APPLICABLE FOR USE WITH THIS PART .
- FOR FULL PRODUCT FUNCTIONALITY REFER TO USER MANUAL .
- DRAWING VIEWS SHOW THE INPUT CORD IN THE "TOP END FED" CONFIGURATION

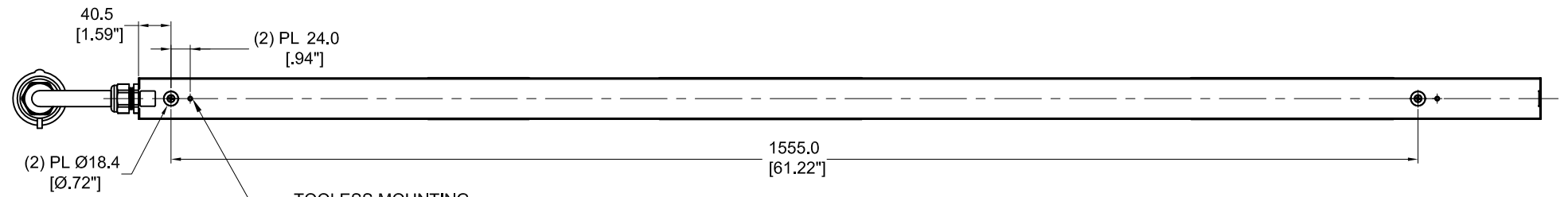
IDENTIFICATION

FOR FINISHED GOOD PART NUMBER & DESCRIPTION TABLE SEE SHEET 2 CONFIGURABLE PART NUMBERS: **P24G07M-XX Y Z**

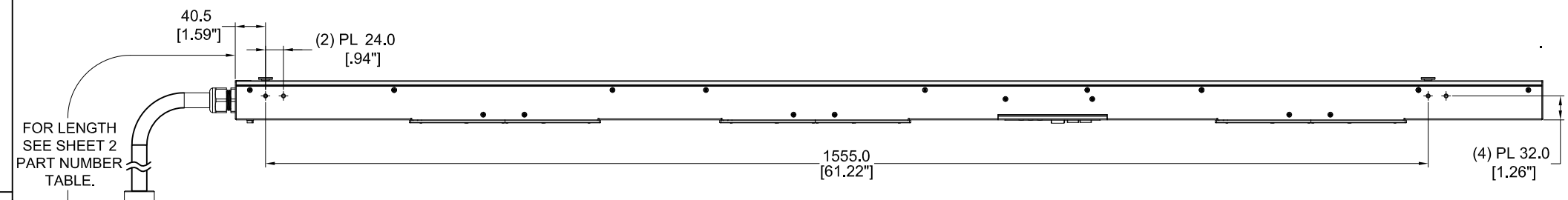
XX: FINISHED GOOD COLOR BL=BLACK YL=YELLOW RD=RED BU=BLUE WH=WHITE GN=GREEN	Y: INPUT FEED TYPE 1=TOP-END FED 2=BOTTOM-END FED	Z: INPUT CORD LENGTH A=1 METER B=2 METER C=3 METER
--	---	---



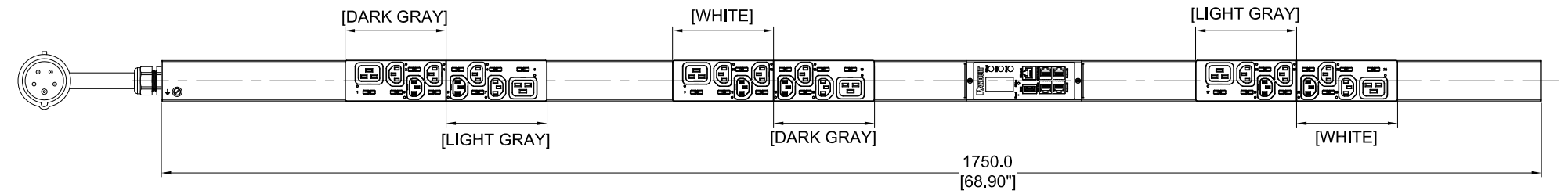
LEFT VIEW



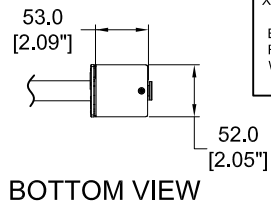
REAR VIEW



RIGHT VIEW



FRONT VIEW



BOTTOM VIEW

PLUG/RECEPTACLE BLOCK

PLUG
IEC 60309, 4P 5W, 6H
IP44 (SPASHPROOF)
16A, 346 - 415V MAX RATED INPUT

RECEPTACLES
IEC 60320/C19
16A, 250V MAX RATED OUTPUT

RECEPTACLES
IEC 60320/C13
10A, 250V MAX RATED OUTPUT

REV	DATE	BY	CHK	APR	DESCRIPTION	ECN
02A	06/07/2018	JF.YU	MIM	JAWI	ADDED SHEET 2 WITH CONFIGURABLE PART NUMBER TABLE AND DESCRIPTION UPDATED IDENTIFICATION TO INCLUDE CONFIGURABLE OPTION DE-CODER	P24G07M
01B	12/15/2017	WSJ	MIM	EDM	UPDATED DESCRIPTION AND ADDED VIEW	P24G07M
01A	10/12/2017	WSJ	MIM	EDM	INITIAL RELEASE	P24G07M

WE ASK THAT YOU CHECK FULLY THE DIMENSIONS, NOTES, AND SIGN THE CLIENT SIGNATURE BOX. THE JOB WILL NOT PROGRESS WITHOUT SIGNED APPROVAL. PLEASE DO NOT DELAY IN RETURNING PROOF AS IT WILL AFFECT DELIVERY

SIGN _____
DATE _____
PRINT _____

TITLE: INTELLIGENT SERIES PDU
P24G07M-XYZ
CUSTOMER DRAWING

ITEM REVISION NAME: _____
DATASHEET FILE NAME: _____

UNLESS OTHERWISE SPECIFIED
DIMENSIONAL TOLERANCE ARE: mm [IN]

Tolerance(mm)	
0<L<50	±0.5
50<L<250	±1.0
250<L<500	±1.5
500<L<1000	±2.5
1000<L<2000	±4.0

THIRD ANGLE PROJECTION

MATERIAL/COLOR: N/A

DRAWING NUMBER: P24G07M_DC

DRAWN BY: WSJ DATE: 10/12/2017 CHK: SEAN SCALE: NONE

SHT 1 OF 2 SCALE: B

THIS COPY IS PROVIDED ON A RESTRICTED BASIS AND IS NOT TO BE USED IN ANY WAY DETRIMENTAL TO THE INTERESTS OF PANDUIT CORP.

FINISHED GOOD PART NUMBER	FINISHED GOOD DESCRIPTION	COLOR	INPUT CORD LENGTH	WEIGHT
P24G07M	VERTICAL,(18) C13,(6) C19,MONITORED & SWITCHED PER OUTLET,200-240/346-415V/16A/THREE-PHASE WYE , TOP-END FED, 3 METER INPUT CORD, BLACK	BLACK (RAL 9005)	3M(+254MM-127MM) 10'[+10"/-5"]	7.8kg
P24G07M-BL1A	VERTICAL,(18) C13,(6) C19,MONITORED & SWITCHED PER OUTLET,200-240/346-415V/16A/THREE-PHASE WYE , TOP-END FED, 1 METER INPUT CORD, BLACK	BLACK (RAL 9005)	1M(+178MM-89MM) 3.3'[+7"/-3.5"]	7.4kg
P24G07M-BL1B	VERTICAL,(18) C13,(6) C19,MONITORED & SWITCHED PER OUTLET,200-240/346-415V/16A/THREE-PHASE WYE , TOP-END FED, 2 METER INPUT CORD, BLACK	BLACK (RAL 9005)	2M(+178MM-89MM) 6.5'[+7"/-3.5"]	7.6kg
P24G07M-RD1A	VERTICAL,(18) C13,(6) C19,MONITORED & SWITCHED PER OUTLET,200-240/346-415V/16A/THREE-PHASE WYE , TOP-END FED, 1 METER INPUT CORD, RED	RED (RAL 3020)	1M(+178MM-89MM) 3.3'[+7"/-3.5"]	7.4kg
P24G07M-RD1B	VERTICAL,(18) C13,(6) C19,MONITORED & SWITCHED PER OUTLET,200-240/346-415V/16A/THREE-PHASE WYE , TOP-END FED, 2 METER INPUT CORD, RED	RED (RAL 3020)	2M(+178MM-89MM) 6.5'[+7"/-3.5"]	7.6kg
P24G07M-RD1C	VERTICAL,(18) C13,(6) C19,MONITORED & SWITCHED PER OUTLET,200-240/346-415V/16A/THREE-PHASE WYE , TOP-END FED, 3 METER INPUT CORD, RED	RED (RAL 3020)	3M(+254MM-127MM) 10'[+10"/-5"]	7.8kg
P24G07M-WH1A	VERTICAL,(18) C13,(6) C19,MONITORED & SWITCHED PER OUTLET,200-240/346-415V/16A/THREE-PHASE WYE , TOP-END FED, 1 METER INPUT CORD, WHITE	WHITE (RAL 9003)	1M(+178MM-89MM) 3.3'[+7"/-3.5"]	7.4kg
P24G07M-WH1B	VERTICAL,(18) C13,(6) C19,MONITORED & SWITCHED PER OUTLET,200-240/346-415V/16A/THREE-PHASE WYE , TOP-END FED, 2 METER INPUT CORD, WHITE	WHITE (RAL 9003)	2M(+178MM-89MM) 6.5'[+7"/-3.5"]	7.6kg
P24G07M-WH1C	VERTICAL,(18) C13,(6) C19,MONITORED & SWITCHED PER OUTLET,200-240/346-415V/16A/THREE-PHASE WYE , TOP-END FED, 3 METER INPUT CORD, WHITE	WHITE (RAL 9003)	3M(+254MM-127MM) 10'[+10"/-5"]	7.8kg
P24G07M-YL1A	VERTICAL,(18) C13,(6) C19,MONITORED & SWITCHED PER OUTLET,200-240/346-415V/16A/THREE-PHASE WYE , TOP-END FED, 1 METER INPUT CORD, YELLOW	YELLOW (RAL 1023)	1M(+178MM-89MM) 3.3'[+7"/-3.5"]	7.4kg
P24G07M-YL1B	VERTICAL,(18) C13,(6) C19,MONITORED & SWITCHED PER OUTLET,200-240/346-415V/16A/THREE-PHASE WYE , TOP-END FED, 2 METER INPUT CORD, YELLOW	YELLOW (RAL 1023)	2M(+178MM-89MM) 6.5'[+7"/-3.5"]	7.6kg
P24G07M-YL1C	VERTICAL,(18) C13,(6) C19,MONITORED & SWITCHED PER OUTLET,200-240/346-415V/16A/THREE-PHASE WYE , TOP-END FED, 3 METER INPUT CORD, YELLOW	YELLOW (RAL 1023)	3M(+254MM-127MM) 10'[+10"/-5"]	7.8kg
P24G07M-BU1A	VERTICAL,(18) C13,(6) C19,MONITORED & SWITCHED PER OUTLET,200-240/346-415V/16A/THREE-PHASE WYE , TOP-END FED, 1 METER INPUT CORD, BLUE	BLUE (RAL 5005)	1M(+178MM-89MM) 3.3'[+7"/-3.5"]	7.4kg
P24G07M-BU1B	VERTICAL,(18) C13,(6) C19,MONITORED & SWITCHED PER OUTLET,200-240/346-415V/16A/THREE-PHASE WYE , TOP-END FED, 2 METER INPUT CORD, BLUE	BLUE (RAL 5005)	2M(+178MM-89MM) 6.5'[+7"/-3.5"]	7.6kg
P24G07M-BU1C	VERTICAL,(18) C13,(6) C19,MONITORED & SWITCHED PER OUTLET,200-240/346-415V/16A/THREE-PHASE WYE , TOP-END FED, 3 METER INPUT CORD, BLUE	BLUE (RAL 5005)	3M(+254MM-127MM) 10'[+10"/-5"]	7.8kg
P24G07M-GN1A	VERTICAL,(18) C13,(6) C19,MONITORED & SWITCHED PER OUTLET,200-240/346-415V/16A/THREE-PHASE WYE , TOP-END FED, 1 METER INPUT CORD, GREEN	GREEN (RAL 6001)	1M(+178MM-89MM) 3.3'[+7"/-3.5"]	7.4kg
P24G07M-GN1B	VERTICAL,(18) C13,(6) C19,MONITORED & SWITCHED PER OUTLET,200-240/346-415V/16A/THREE-PHASE WYE , TOP-END FED, 2 METER INPUT CORD, GREEN	GREEN (RAL 6001)	2M(+178MM-89MM) 6.5'[+7"/-3.5"]	7.6kg
P24G07M-GN1C	VERTICAL,(18) C13,(6) C19,MONITORED & SWITCHED PER OUTLET,200-240/346-415V/16A/THREE-PHASE WYE , TOP-END FED, 3 METER INPUT CORD, GREEN	GREEN (RAL 6001)	3M(+254MM-127MM) 10'[+10"/-5"]	7.8kg
P24G07M-BL2A	VERTICAL,(18) C13,(6) C19,MONITORED & SWITCHED PER OUTLET,200-240/346-415V/16A/THREE-PHASE WYE , BOTTOM-END FED, 1 METER INPUT CORD, BLACK	BLACK (RAL 9005)	1M(+178MM-89MM) 3.3'[+7"/-3.5"]	7.4kg
P24G07M-BL2B	VERTICAL,(18) C13,(6) C19,MONITORED & SWITCHED PER OUTLET,200-240/346-415V/16A/THREE-PHASE WYE , BOTTOM-END FED, 2 METER INPUT CORD, BLACK	BLACK (RAL 9005)	2M(+178MM-89MM) 6.5'[+7"/-3.5"]	7.6kg
P24G07M-BL2C	VERTICAL,(18) C13,(6) C19,MONITORED & SWITCHED PER OUTLET,200-240/346-415V/16A/THREE-PHASE WYE , BOTTOM-END FED, 3 METER INPUT CORD, BLACK	BLACK (RAL 9005)	3M(+254MM-127MM) 10'[+10"/-5"]	7.8kg
P24G07M-RD2A	VERTICAL,(18) C13,(6) C19,MONITORED & SWITCHED PER OUTLET,200-240/346-415V/16A/THREE-PHASE WYE , BOTTOM-END FED, 1 METER INPUT CORD, RED	RED (RAL 3020)	1M(+178MM-89MM) 3.3'[+7"/-3.5"]	7.4kg
P24G07M-RD2B	VERTICAL,(18) C13,(6) C19,MONITORED & SWITCHED PER OUTLET,200-240/346-415V/16A/THREE-PHASE WYE , BOTTOM-END FED, 2 METER INPUT CORD, RED	RED (RAL 3020)	2M(+178MM-89MM) 6.5'[+7"/-3.5"]	7.6kg
P24G07M-RD2C	VERTICAL,(18) C13,(6) C19,MONITORED & SWITCHED PER OUTLET,200-240/346-415V/16A/THREE-PHASE WYE , BOTTOM-END FED, 3 METER INPUT CORD, RED	RED (RAL 3020)	3M(+254MM-127MM) 10'[+10"/-5"]	7.8kg
P24G07M-WH2A	VERTICAL,(18) C13,(6) C19,MONITORED & SWITCHED PER OUTLET,200-240/346-415V/16A/THREE-PHASE WYE , BOTTOM-END FED, 1 METER INPUT CORD, WHITE	WHITE (RAL 9003)	1M(+178MM-89MM) 3.3'[+7"/-3.5"]	7.4kg
P24G07M-WH2B	VERTICAL,(18) C13,(6) C19,MONITORED & SWITCHED PER OUTLET,200-240/346-415V/16A/THREE-PHASE WYE , BOTTOM-END FED, 2 METER INPUT CORD, WHITE	WHITE (RAL 9003)	2M(+178MM-89MM) 6.5'[+7"/-3.5"]	7.6kg
P24G07M-WH2C	VERTICAL,(18) C13,(6) C19,MONITORED & SWITCHED PER OUTLET,200-240/346-415V/16A/THREE-PHASE WYE , BOTTOM-END FED, 3 METER INPUT CORD, WHITE	WHITE (RAL 9003)	3M(+254MM-127MM) 10'[+10"/-5"]	7.8kg
P24G07M-YL2A	VERTICAL,(18) C13,(6) C19,MONITORED & SWITCHED PER OUTLET,200-240/346-415V/16A/THREE-PHASE WYE , BOTTOM-END FED, 1 METER INPUT CORD, YELLOW	YELLOW (RAL 1023)	1M(+178MM-89MM) 3.3'[+7"/-3.5"]	7.4kg
P24G07M-YL2B	VERTICAL,(18) C13,(6) C19,MONITORED & SWITCHED PER OUTLET,200-240/346-415V/16A/THREE-PHASE WYE , BOTTOM-END FED, 2 METER INPUT CORD, YELLOW	YELLOW (RAL 1023)	2M(+178MM-89MM) 6.5'[+7"/-3.5"]	7.6kg
P24G07M-YL2C	VERTICAL,(18) C13,(6) C19,MONITORED & SWITCHED PER OUTLET,200-240/346-415V/16A/THREE-PHASE WYE , BOTTOM-END FED, 3 METER INPUT CORD, YELLOW	YELLOW (RAL 1023)	3M(+254MM-127MM) 10'[+10"/-5"]	7.8kg
P24G07M-BU2A	VERTICAL,(18) C13,(6) C19,MONITORED & SWITCHED PER OUTLET,200-240/346-415V/16A/THREE-PHASE WYE , BOTTOM-END FED, 1 METER INPUT CORD, BLUE	BLUE (RAL 5005)	1M(+178MM-89MM) 3.3'[+7"/-3.5"]	7.4kg
P24G07M-BU2B	VERTICAL,(18) C13,(6) C19,MONITORED & SWITCHED PER OUTLET,200-240/346-415V/16A/THREE-PHASE WYE , BOTTOM-END FED, 2 METER INPUT CORD, BLUE	BLUE (RAL 5005)	2M(+178MM-89MM) 6.5'[+7"/-3.5"]	7.6kg
P24G07M-BU2C	VERTICAL,(18) C13,(6) C19,MONITORED & SWITCHED PER OUTLET,200-240/346-415V/16A/THREE-PHASE WYE , BOTTOM-END FED, 3 METER INPUT CORD, BLUE	BLUE (RAL 5005)	3M(+254MM-127MM) 10'[+10"/-5"]	7.8kg
P24G07M-GN2A	VERTICAL,(18) C13,(6) C19,MONITORED & SWITCHED PER OUTLET,200-240/346-415V/16A/THREE-PHASE WYE , BOTTOM-END FED, 1 METER INPUT CORD, GREEN	GREEN (RAL 6001)	1M(+178MM-89MM) 3.3'[+7"/-3.5"]	7.4kg
P24G07M-GN2B	VERTICAL,(18) C13,(6) C19,MONITORED & SWITCHED PER OUTLET,200-240/346-415V/16A/THREE-PHASE WYE , BOTTOM-END FED, 2 METER INPUT CORD, GREEN	GREEN (RAL 6001)	2M(+178MM-89MM) 6.5'[+7"/-3.5"]	7.6kg
P24G07M-GN2C	VERTICAL,(18) C13,(6) C19,MONITORED & SWITCHED PER OUTLET,200-240/346-415V/16A/THREE-PHASE WYE , BOTTOM-END FED, 3 METER INPUT CORD, GREEN	GREEN (RAL 6001)	3M(+254MM-127MM) 10'[+10"/-5"]	7.8kg

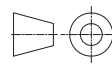
B

B

A

A

REV	DATE	BY	CHK	APR	DESCRIPTION	ECN
02A	06/07/2018	JF.YU	MIM	JAWI	ADDED SHEET 2 WITH CONFIGURABLE PART NUMBER TABLE AND DESCRIPTION UPDATED IDENTIFICATION TO INCLUDE CONFIGURABLE OPTION DE-CODER	P24G07M
01B	12/15/2017	WSJ	MIM	EDM	UPDATED DESCRIPTION AND ADDED VIEW	P24G07M
01A	10/12/2017	WSJ	MIM	EDM	INITIAL RELEASE	P24G07M

WE ASK THAT YOU CHECK FULLY THE DIMENSIONS, NOTES, AND SIGN THE CLIENT SIGNATURE BOX. THE JOB WILL NOT PROGRESS WITHOUT SIGNED APPROVAL. PLEASE DO NOT DELAY IN RETURNING PROOF AS IT WILL AFFECT DELIVERY		SIGN
		DATE
		PRINT
TITLE INTELLIGENT SERIES PDU P24G07M-XYZ CUSTOMER DRAWING		
ITEM REVISION NAME		PANDUIT
DATASHEET FILE NAME:		
UNLESS OTHERWISE SPECIFIED DIMENSIONAL TOLERANCE ARE: mm [IN]		MATERIAL/COLOR: N/A
 THIRD ANGLE PROJECTION Tolerance(mm) 0<L<50 ±0.5 50<L<250 ±1.0 250<L<500 ±1.5 500<L<1000 ±2.5 1000<L<2000 ±4.0		DRAWING NUMBER: P24G07M_DC
DRAWN BY	DATE	SCALE
WSJ	10/12/2017	NONE
CHK	SCALE	
SEAN	NONE	
SHT 2 OF 2		SCALE B