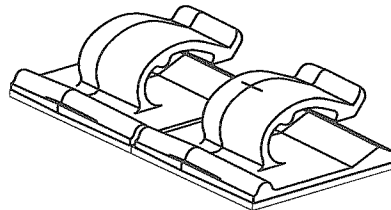
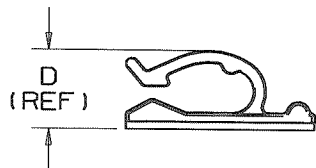
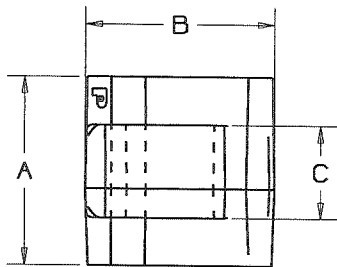


THIS COPY IS PROVIDED ON A RESTRICTED BASIS AND IS NOT TO BE USED IN ANY WAY DETRIMENTAL TO THE INTERESTS OF PANDUIT CORPORATION.

PANDUIT PART NUMBER	DIMENSIONS				MAXIMUM CABLE DIA. in. (mm)	ADHESIVE BACKING	WEIGHT lbs/100 pcs (g)/100 pcs
	A	B	C	D			
ACC38-A	1.00 (25.4)	1.00 (25.4)	0.49 (12.4)	0.40 (10.2) (REF)	0.380 (9.6)	RUBBER	0.40 (181)
ACC38-AT						ACRYLIC	
ACC38-AV						HIGH BOND ACRYLIC	



TWO UP CONFIGURATION  
(AS SUPPLIED TO CUSTOMER)

NOTES:

- SEE CURRENT PRICE SHEET FOR PART NUMBER SUFFIX DESIGNATION FOR PACKAGE SIZE.

CAD FILENAME/LAYERS: G03597BB\_DC\_GB0239DY/00C

**PANDUIT** CORP.

TINLEY PARK, ILLINOIS

ACC38-A, ACC38-AT, ACC38-AV  
ADHESIVE CORD CLIP

UNLESS OTHERWISE SPECIFIED,  
DIMENSIONAL TOLERANCES ARE:  
(.X) ±0.05 (1.3) (.XXX) ±0.010 (0.25)  
(.XX) ±0.02 (.5) ANGLES ±5°

UNLESS OTHERWISE SPECIFIED,  
ALL DIMENSIONS ARE GIVEN  
IN INCHES, THIRD ANGLE PROJECTION

DRAWN BY  
MLD

MAT'L:

SCALE  
FULL

DATE  
8-8-96

NYLON 6/6

DRAWING NO.

GB0239DY

DWG

A  
SIZE

REV	DATE	BY	CHK	DESCRIPTION	ECN	R	CUST	SUP
00C	11-6-09	TMSA	SMY	ADDED ACC38-AV PART NUMBER	GB0239DY	00C	KEN	
00B	6/23/08	DJSM		REVISED AND RE-RELEASED TO TEAMCENTER REV HISTORY; TABULARIZED DIMS, REMOVED .45 AND .27 DIMS, REVISED .38 DIM TO INCLUDE TAPE, TIGHTENED TOLERANCES, REMOVED APPLICATION, TAPE, AND WARRANTY NOTES	GB0239DY	00B		
I	10/30/00	CGSM		CHANGED DIMS TO REF, REMOVED .03 DIM, CHANGED APPLICATION NOTE 1	GB0239DY	I		
R	8-8-96	MLD		INITIAL RELEASE	GB0239DY	R		

CHK'D  
KEN