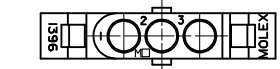
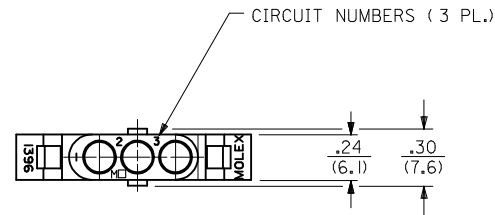
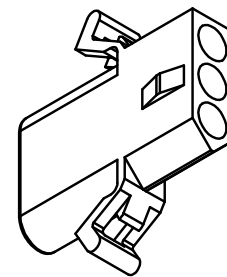
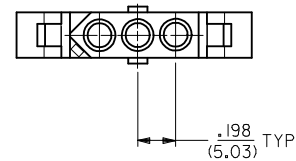
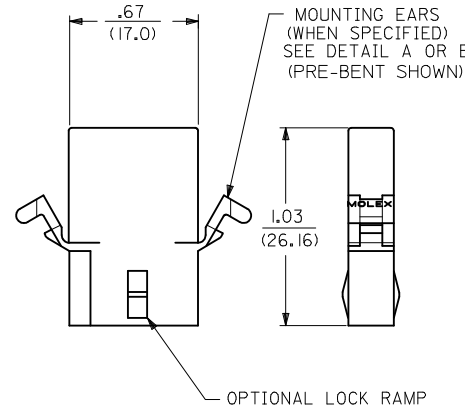


PLUG

1396-P SHOWN ABOVE (WITH STANDARD MOUNTING EAR)

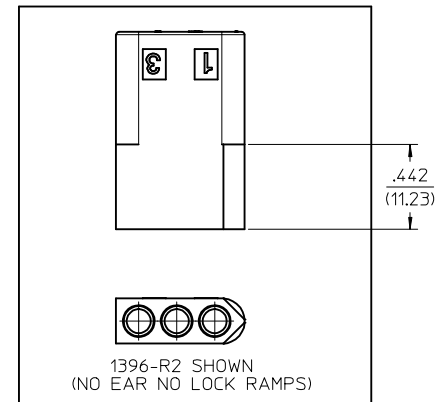


ALTERNATE END CONFIGURATION
SEE NOTE Δ



RECEPTACLE

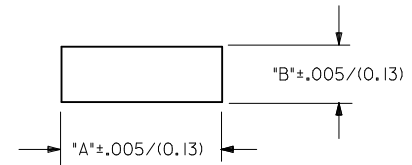
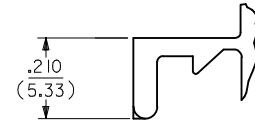
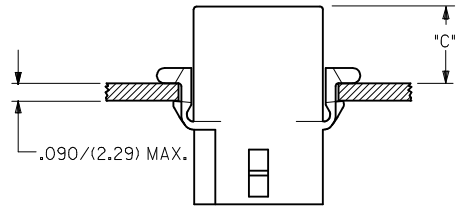
1396-R4 SHOWN (WITH PRE-BENT EAR)



<p>REMOVE OBSOLETE EC NO: UCP2017-2556 DRAWN:APPELDORN 2017/05/26 CHKD:HKIPPER 2017/05/26 APPR:FSMITH 2017/05/30</p>	QUALITY SYMBOLS	GENERAL TOLERANCES (UNLESS SPECIFIED)		DIMENSION STYLE IN/MM		SCALE 2:1	DESIGN UNITS INCH	THIRD ANGLE PROJECTION	
	$\nabla = 0$	4 PLACES $\pm .010$	$\pm .010$	DRAWN BY JJS	DATE 1988/04/08	<p>TITLE .093/(2.36) HOUSING PLUG AND RECEPTACLE 3 CIRCUIT .198 CENTERS</p>			
	$\nabla = 0$	3 PLACES $\pm .010$	$\pm .010$	CHECKED BY RW	DATE 1988/04/08				
	$\nabla = 0$	2 PLACES ± 0.25	$\pm .014$	APPROVED BY FSMITH	DATE 2014/06/23	<p>molex</p>			
$\nabla = 0$	1 PLACE ± 0.35	$\pm .014$	MATERIAL NO. SEE CHART		DOCUMENT NO. SD-1396-*		SHEET NO. 1 OF 2		
REV Z4	ANGULAR $\pm 1/2^\circ$		DRAFT WHERE APPLICABLE MUST REMAIN WITHIN DIMENSIONS		<p>THIS DRAWING CONTAINS INFORMATION THAT IS PROPRIETARY TO MOLEX INCORPORATED AND SHOULD NOT BE USED WITHOUT WRITTEN PERMISSION</p>				

PLUG		RECEPTACLE	
ORDER NO.	ENG. NO.	ORDER NO.	ENG. NO.
03-09-2031	I396-P	03-09-1031	I396-R
03-09-2032	I396-P1	03-09-1032	I396-R1
03-09-7032	I396-PIBK	03-09-1033	I396-R2
03-09-2037	I396-P3	03-09-6033	I396-R2BK
		03-09-1081	I396-R4

HOUSING	DIM. "A"	DIM. "B"	"C" PREBENT EAR	"C" STANDARD EAR
PLUG	.933/(23.70)	.375/(9.53)	.40/(10.2)	.38/(9.7)
RECEPT.	.830/(21.08)	.312/(7.92)	.41/(10.4)	.39/(9.9)



DETAIL A
STANDARD MOUNTING EAR
(SCALE 4:1)

LEGEND:

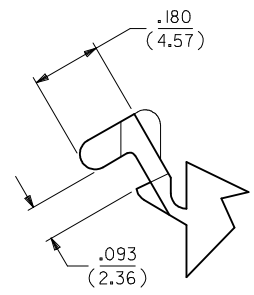
I396-****-*

P = PLUG
R = RECEPTACLE

BLANK = WITH STANDARD EARS
1 = WITHOUT EARS
2 = RECEPTACLE WITHOUT EARS, WITHOUT LOCK RAMP
3 = PLUG ONLY, W/ SIDE MOUNT (SEE SD-I396-P3)
4 = WITH PREBENT EARS

COLOR: BLANK=NATURAL COLOR
AM=AMBER BK=BLACK BU=BLUE
BN=BROWN GY=GRAY GN=GREEN
OR=ORANGE RD=RED YW=YELLOW

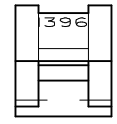
BLANK = NYLON 6/6, 94V-2



DETAIL B
PREBENT MOUNTING EAR
(SCALE 4:1)

NOTES:

1. MATERIAL: SEE LEGEND
 2. FINISH: NOT APPLICABLE
 3. PRODUCT SPECIFICATION: PS-02-09
 4. PACKAGING INFORMATION: REFER TO PK-1396-002
- △ DIMENSION FROM THE BACK OF THE HOUSING TO THE END OF BRUSH ON WIRE INSERTED INTO THE HOUSING:
DIM "A" = .256/6.50 FOR 42477 & 42478 TERMINALS
.216/5.49 FOR ALL OTHER .093 TERMINALS
DIM "B" = .377/9.58 FOR 42477 & 42478 TERMINALS
.337/8.56 FOR ALL OTHER .093 TERMINALS
- △ CIRCUIT I.D. NUMBERS ON SIDE OF HOUSING APPEAR ON PARTS FROM TOOLS BUILT AFTER 5/4/93.
- △ END CONFIGURATION IS DEPENDENT ON MOLD DESIGN. PARTS MAY HAVE EITHER CONFIGURATION.
8. PARTS CONFORM TO CLASS B REQUIREMENTS OF COSMETIC SPECIFICATION PS-45499-002.



SEE SHEET 1 EC NO: UCP2017-2556 DRW:BAPELDORN 2017/05/26 CHKD:HKIPPER 2017/05/26 APPR:FSMITH 2017/05/30	QUALITY SYMBOLS ▽ = 0 ▽ = 0 ▽ = 0	GENERAL TOLERANCES (UNLESS SPECIFIED)		DIMENSION STYLE IN/MM		SCALE 2:1	DESIGN UNITS INCH	THIRD ANGLE PROJECTION		
		4 PLACES ± --- ± ---	mm	INCH	DRAWN BY	DATE	TITLE .093/(2.36) HOUSING PLUG AND RECEPTACLE 3 CIRCUIT .198 CENTERS molex			
		3 PLACES ± --- ± .010			JJS	1988/04/08				
		2 PLACES ± 0.25 ± .014			CHECKED BY	DATE	DOCUMENT NO. SD-1396--*			
1 PLACE ± 0.35 ± ---			RW	1988/04/08						
0 PLACE ± --- ± ---			APPROVED BY	DATE	SHEET NO. 2 OF 2					
		ANGULAR ±1/2°		SEE CHART						
		DRAFT WHERE APPLICABLE MUST REMAIN WITHIN DIMENSIONS		SIZE C THIS DRAWING CONTAINS INFORMATION THAT IS PROPRIETARY TO MOLEX INCORPORATED AND SHOULD NOT BE USED WITHOUT WRITTEN PERMISSION						