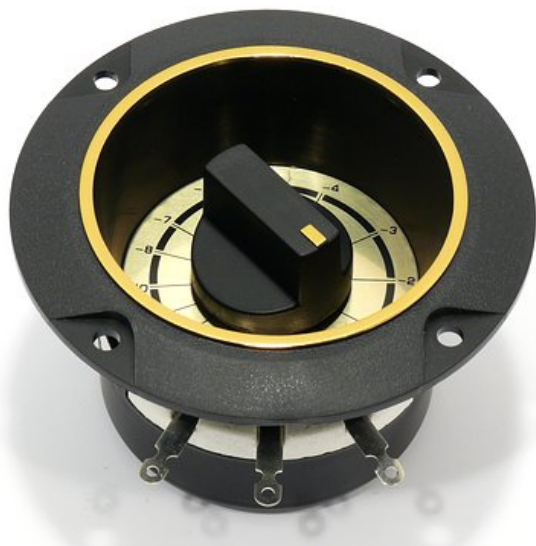


# LC 95

Art. No. 5185

---



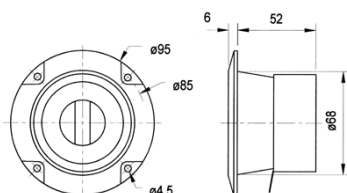
**Lautsprecher-Pegelregler** (L-Regler /L-Pad) für den Profi-Einsatz in hochbelastbaren Kombinationen, 100 W Dauerlast. Mit schwarzer Metallabdeckung zur besseren Wärmeabfuhr, Wirkungsgradabsenkung ablesbar in dB (auf 8 Ohm Anschlussimpedanz bezogen). Einfacher, versenkter Einbau.

**Loudspeaker level control** (L-pad) for professional applications in high-power systems. 100 W continuous power. With black metal cover for better heat dissipation, efficiency reduction scaled in dB (referring to a load impedance of 8 ohms). Easy installation. Mounting cutout: 74 mm ø

01.10.2015

# LC 95

Art. No. 5185



## Technische Daten / Technical data

Einbauöffnung Cutout diameter	$\varnothing 74$ mm
----------------------------------	---------------------

LC 57 / LC 95

