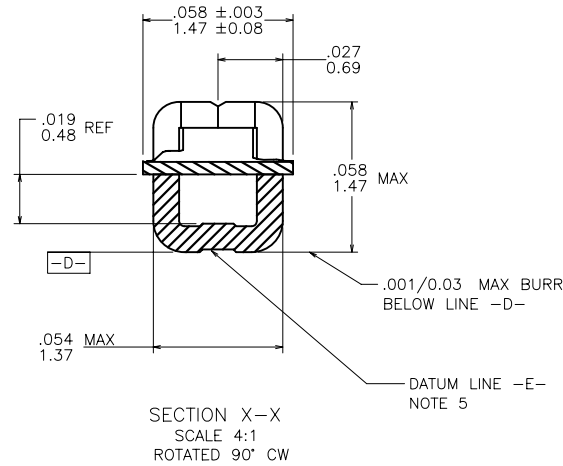
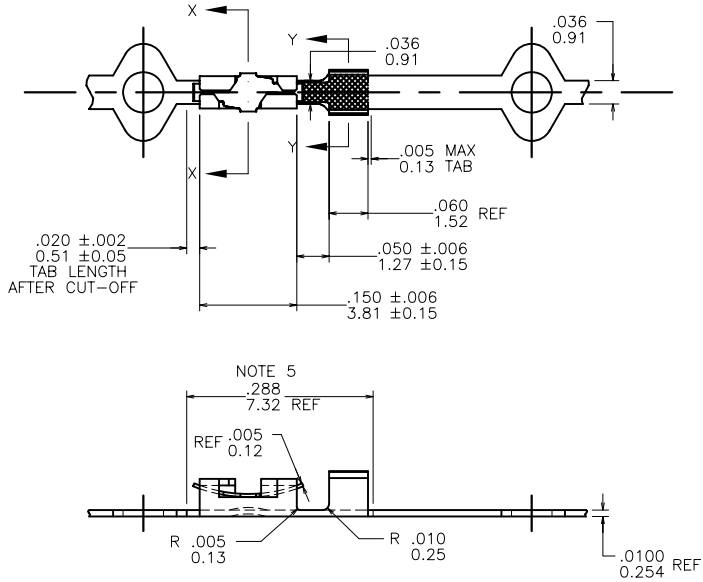
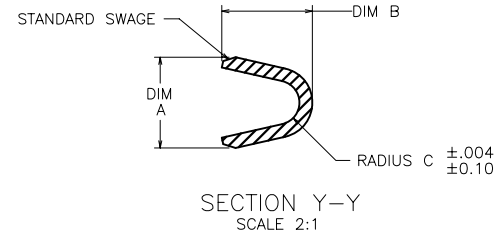
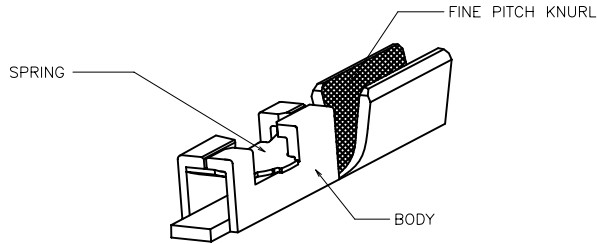


PRODUCT NUMBER
SEE TABLE



mat'l. code SEE NOTE 1				surface <input checked="" type="checkbox"/> tolerance		projection		product family PV TERMINALS	
ltr ecn no dr date				tolerances unless otherwise specified				title	
B	v61321	EPK	1996-10-14	angles	ref	ref	ref	MINI PV™ RECEPT. C.T.W.	
C	v05-0269	VS	2005-04-19	ref	ref	ref	ref	SHORT WIRE BARREL S/BUMP	
D	v06-0625	HTB	2006-07-05	0° ±2'	ref	ref	ref	scale 4:1	
E	v08-0117	HTB	2008-04-10	dr	J. W. BAIR	1992-12-09	dwg no		sheet 1 of 2
F	v08-0520	HTB	2008-12-03	engr	T. HANNA	1992-12-09	93135		A4
				chr	T. BREWBAKER	1993-07-27	type		CUSTOMER Drawing
				appd	T. HANNA	1993-07-27			
sheet index	revision sheet	F	F						
		1	2						



PRODUCT NUMBER	WIRE SIZE	WIRE BARREL			SPRING THICKNESS
		DIM A	DIM B	RADIUS C	
93135-001		O B S O L E T E			
93135-001LF	22-26 AWG	.070/1.78	.070/1.78	.017/0.43	.0048/0.122
93135-002		O B S O L E T E			
93135-002LF	28-32 AWG	.054/1.37	.058/1.47	.011/0.28	.0048/0.122
93135-003		O B S O L E T E			
93135-003LF	22-26 AWG	.070/1.78	.070/1.78	.017/0.43	.0035/0.089
93135-004		O B S O L E T E			
93135-004LF	28-32 AWG	.054/1.37	.058/1.47	.011/0.28	.0035/0.089
93135-005		O B S O L E T E			
93135-005LF	22-26 AWG	.070/1.78	.070/1.78	.017/0.43	.0065/0.165
93135-006		O B S O L E T E			
93135-006LF	28-32 AWG	.054/1.37	.058/1.47	.011/0.28	.0065/0.165

NOTES:

- ①. BODY MATERIAL: 1/4 HARD BRASS
 BODY PLATING: 30μ"/0.76μm Au OVER 50μ"/1.27μm Ni IN CONTACT AREA.
 REMAINDER OF TOP OF TERMINAL GOLD FLASH OVER 50μ"/1.27μm NICKEL.
 BACKSIDE OF TERMINAL PLATED WITH 30μ"/0.76μm NICKEL ONLY.
 SPRING MATERIAL: BeCu HEAT TREATED
 SPRING PLATING: Au FLASH
2. PART TO MATE WITH .025±.002/,.640±.050 SQUARE PIN.
3. APPLICABLE SPECIFICATIONS:
 TA-75: CRIMP METHODS FOR USE IN MINI LATCH HOUSING EXCEPT NO BELLMOUTH FRONT OR REAR.
4. PART TO BE LUBRICATED TO FACILITATE CRIMPING.
5. MAX. BURR ANY EDGE .0032/0.081
- ⑥. BOTTOM SURFACE OF TERMINAL SHALL BE STRAIGHT WITHIN .003/0.08 OVER .288/7.32 REF LENGTH AS MEASURED ALONG DATUM LINE -E- ESTABLISHED AT CENTERLINE OF .054/1.37 DIA. PERFECT FORM NOT REQUIRED AT MMC.
7. PRODUCT MEETS EUROPEAN UNION DIRECTIVES AND OTHER COUNTRY REGULATIONS AS DESCRIBED IN GS-22-008.
8. THIS PRODUCT IS NOT INTENDED TO BE EXPOSED TO MANUFACTURING SOLDERING PROCESSES.

mat'l. code		surface		tolerance		projection		product family	
SEE NOTE 1		✓				INCH/MM		PV TERMINALS	
ltr	ecr no	dr	date	tolerances unless otherwise specified				title	
F				angles	XX +01/X+3	INCH/MM		MINI PV™ RECEPT. C.T.W.	
				0' ±2'	.XXX +005/XX+13	scale 1:1		SHORT WIRE BARREL S/BUMP	
					XXXX +0020/XXX+051			dwg no	
		dr	J. W. BAIR	1992-12-09			sheet 2 of 2		size
		engr	T. HANNA	1992-12-09			93135		A4
		chr	T. BREWBAKER	1993-07-27			FCI		
		appd	T. HANNA	1993-07-27			type		CUSTOMER Drawing
sheet index	revision sheet								