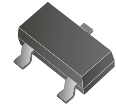


CDBT0540-G

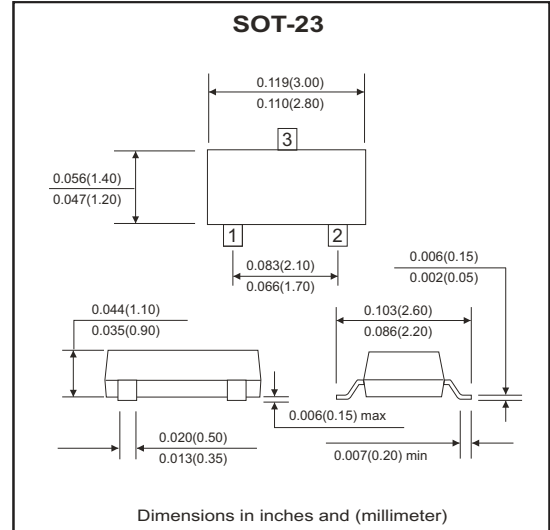
RoHS Device



Features

- Small surface mount type.
- Low reverse current and low forward voltage.
- High reliability.

Marking: D3A



Maximum Ratings (at Ta=25°C unless otherwise noted)

Parameter	Symbol	Value	Unit
Peak reverse voltage	V_{RM}	40	V
DC reverse voltage	V_R	40	V
Peak surge forward voltage	I_{FSM}	3	A
Mean rectifying current	I_o	0.5	A
Power dissipation	P_D	250	mW
Thermal resistance, junction to ambient	$R_{\theta JA}$	500	°C/W
Junction temperature	T_J	125	°C
Storage temperature	T_{STG}	-40 to +125	°C

Electrical Characteristics (at Ta=25°C unless otherwise noted)

Parameter	Symbol	Conditions	Min	Typ.	Max	Unit
Reverse breakdown voltage	V_{BR}	$I_R=100\mu A$	40			V
Forward voltage	V_F	$I_F=500mA$			0.55	V
Reverse current	I_R	$V_R=10V$			30	μA
		$V_R=30V$			50	μA
Capacitance between terminals	C_T	$V_R=0V, f=1MHz$		125		pF
		$V_R=10V, f=1MHz$		20		pF

RATING AND CHARACTERISTIC CURVES (CDBT0540-G)

Fig.1 Forward Characteristics

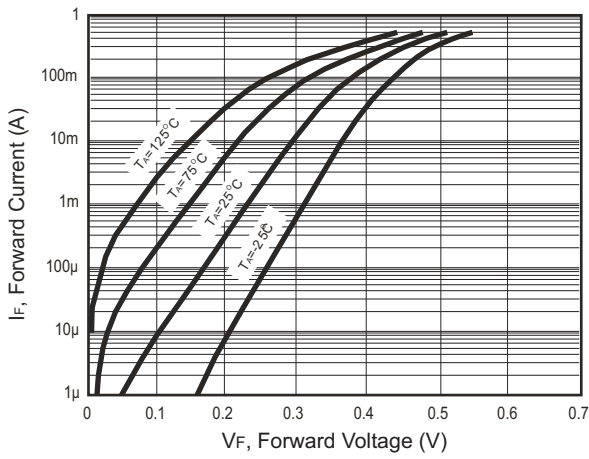


Fig.2 Reverse Characteristics

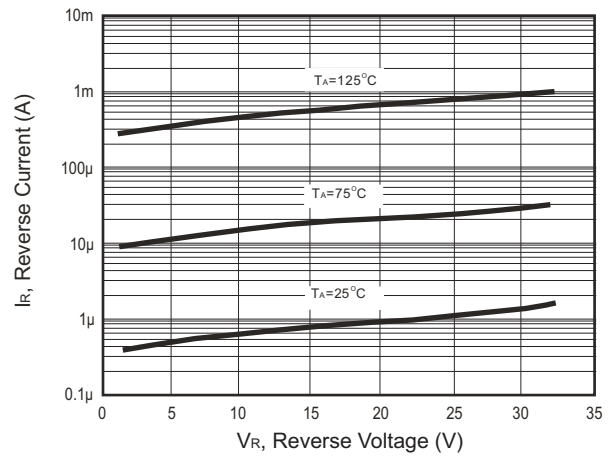


Fig.3 Capacitance Between Terminals Characteristics

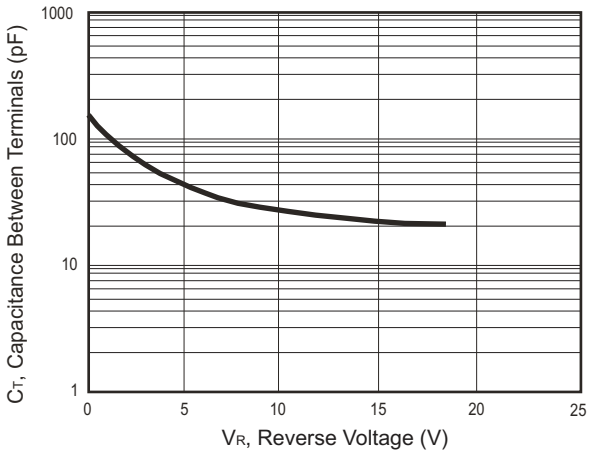


Fig.4 Power Derating Curve

