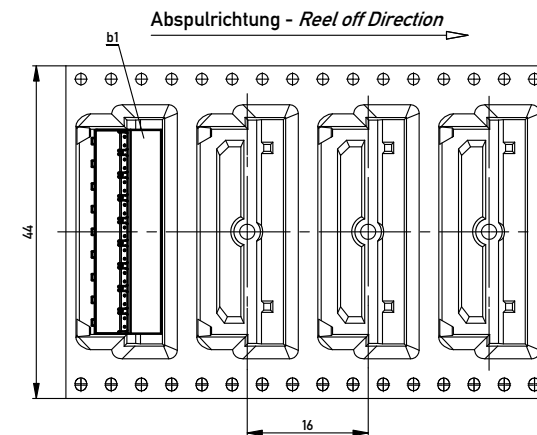
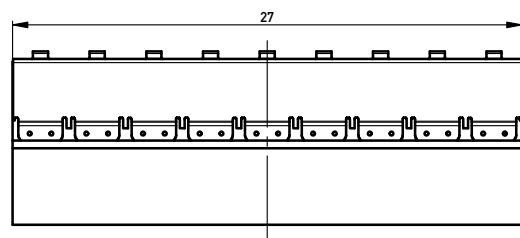
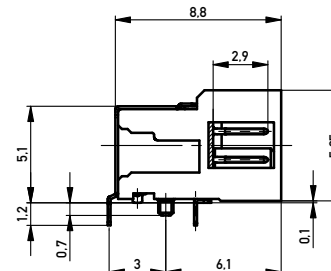
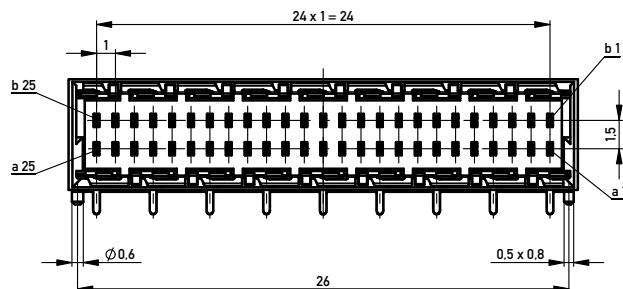
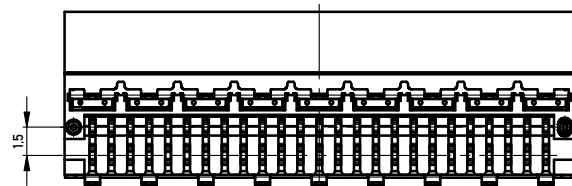
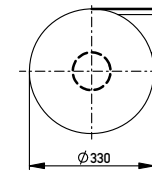
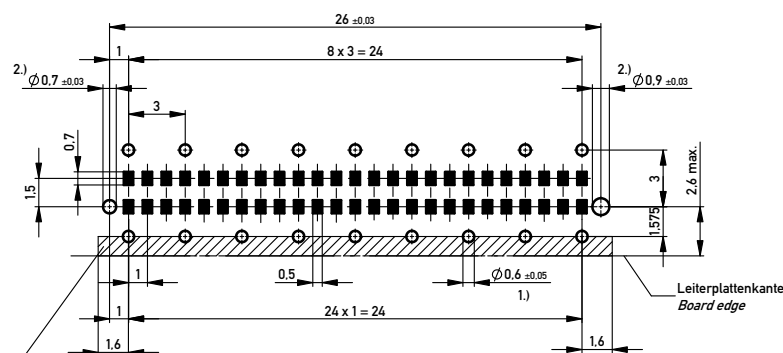


Verpackt im Gurt in Anlehnung an DIN IEC 60286-3  
 Tape on Reel Packaging according to DIN IEC 60286-3  
 Verpackungseinheit: 400 Stück  
 Packaging unit: 400 pcs



Leiterplatten-Layout Vorschlag / PCB-layout proposal



1.) Fertigllochdurchmesser / Finished via diameter

2.) Durchmesser des Bohrers / Drill tool

Schirmblechaufgeflechte berücksichtigen.  
 keine Durchkontaktierungen oder Leitungen möglich!  
 Consider shielding contact area, no via's or traces possible!

Anforderungsstufe 1  
 Performance Level 1

Kontaktbereich vergoldet  
 Mating Area gold plating

Anschlussbereich verzinkt 4-6 µm  
 Terminal Area 4-6 µm tin plating

Koplanarität der Anschlüsse ≤ 0,1 mm  
 Coplanarity Area of Termination ≤ 0,1 mm

Information:	Tolerances		Scale 5:1
All rights reserved. Only for Information. To ensure that this is the latest version of this drawing, please contact one of the ERNI companies before using.	Subject to modification without prior notice. Drawing will not be updated.	All Dimensions in mm	Designation <b>Messert. 90° SMDTHR 50-pot EMV</b> <b>Male 90° SMDTHR 50 cont. EMV</b>
g	24.05.2015		<b>374721</b>
Index	Date	www.ERNI.com	i A2
			Class MSPEED

Copyright by ERNI GmbH  
 Proprietary notice pursuant to ISO 16949 to be observed