

# FT3GN

(Former FOX923\_GP)

3.2mm x 2.5mm

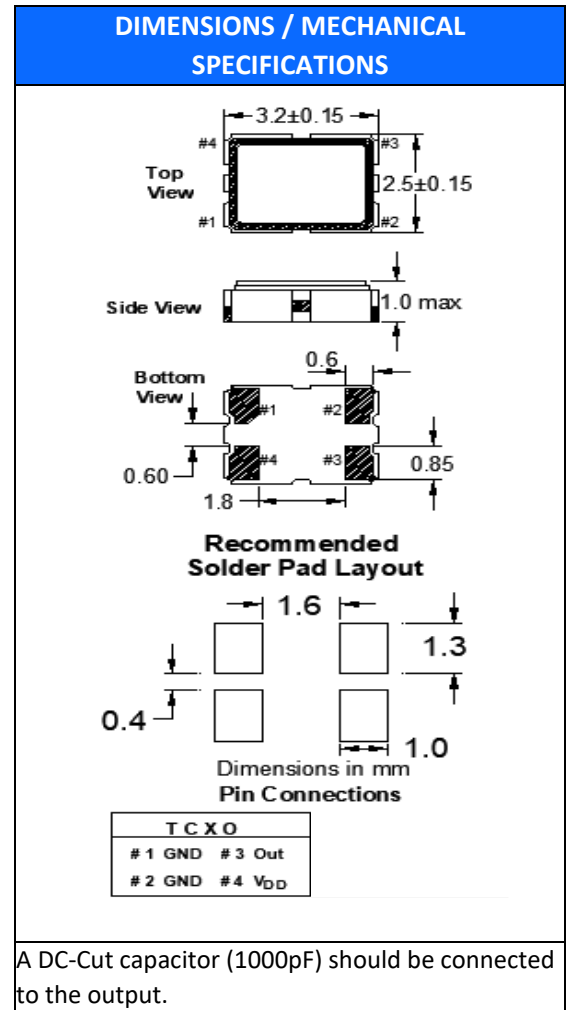
CSW GPS TCXO



## Features

- Analog Temperature Compensation

STANDARD SPECIFICATIONS	
PARAMETERS	MAX (Unless otherwise noted)
Frequency Range (MHz)	16 ~ 52.000
Temperature Range	
Operating (T <sub>OPR</sub> )	(See table below)
Storage (T <sub>STG</sub> )	-40°C ~ +85°C
Supply Voltage (V <sub>DD</sub> ) (±5%)	1.8V; 2.5V; 2.7V; 2.8V; 3.0V; 3.3V
Input Current (I <sub>DD</sub> )	2.0 mA
Initial Frequency Tolerance @ 25°C (after reflow) V <sub>c</sub> = 0.5V <sub>DD</sub>	±2.0 PPM
Frequency Stability	
Over Temperature Range	±0.5PPM
Over Supply Voltage Change (V <sub>DD</sub> ±5%)	±0.3 PPM
Over Load Change [10kΩ//10pF]+-10%	±0.3 PPM
Output Voltage Level	0.8V <sub>p-p</sub> min
Output Load	[10kΩ//10pF]+-10%
Pullability	
V <sub>c</sub> = 0.5V <sub>DD</sub> ±0.5V <sub>DD</sub>	±5 PPM min
Aging per year	±1.0 PPM
Startup Time (T <sub>s</sub> )	3.0 mS
Phase Noise (@ 1kHz offset)	-130 dBc/Hz Typical
Reflow Soldering Temp	260°C / 10 Seconds x 2
Moisture Sensitivity Level (MSL)	1
Termination Finish	Au over Ni
Lead-Free	Yes
RoHS/REACH Compliant	Yes



<sup>1</sup>For proper operation, a control voltage (V<sub>c</sub>) must be applied to pin 1 of VCTCXO's. All specifications subject to change without notice.

# FT3GN

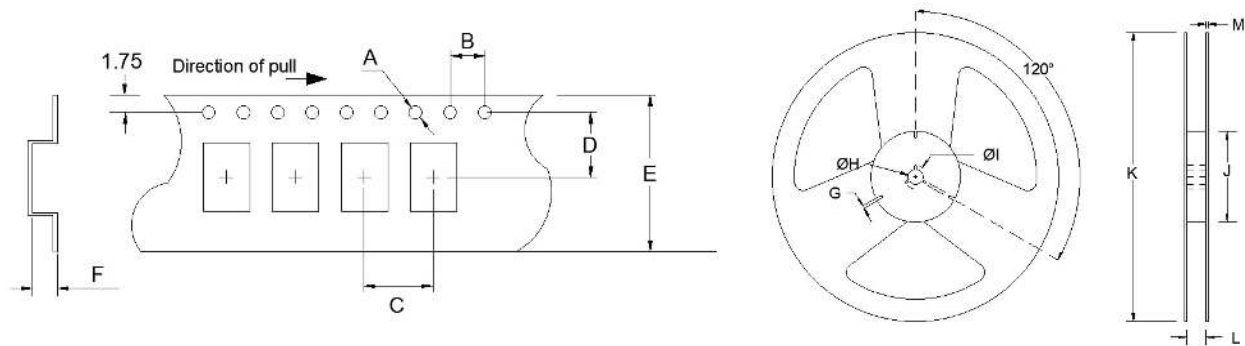
(Former FOX923\_GP)

3.2mm x 2.5mm

CSW GPS TCXO



TAPE SPECIFICATIONS (mm)							REEL SPECIFICATIONS (mm)						
A	B	C	D	E	F	REEL QTY	G	H	I	J	K	L	M
ø1.5	4.0	4.0	3.5	8.0	1.4	-T3 = 3,000 Default -T2 = 2,000 -T1 = 1,000	2.0	ø13	ø21	ø60	ø180	9.0	1.5



## Available Options & Part Identification for TCXO Model T3GN<sup>1</sup>

Sample PN: FT3GNUPK26.0-T3

F	T3GN	D	U	K	26.0	-T3
<u>Fox</u>	<u>Model Number</u> T3GN = TCXO	<u>Voltage</u> B = +3.3V±5% D = +3.0V±5% Q = +2.8V±5% S = +2.7V±5% H = +2.5V±5% L = +1.8V±10%	<u>Stability</u> U = ±0.5 PPM	<u>Operating Temperature</u> K = -30 to +85°C	<u>Frequency (MHz)</u>	<u>Values Added Options</u> Blank = Bulk T1 = 1,000 pcs T2 = 2,000 pcs T3 = 3,000 pcs

<sup>1</sup> Not all frequencies in the frequency range available.

### Reliability Test Conditions

Please contact Abracon Quality Assurance department