

# Wood-Compo Screwdriver

PAT.

No. 300 Series  
Standard type



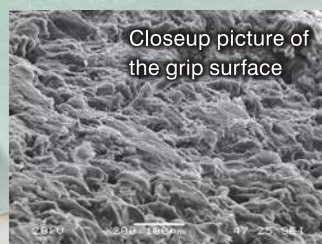
*New*

No. B-330 Series  
Tang-Thru type

**Secure ideal  
working  
efficiency even  
with an oily hand!**  
Most Reliable Non-Slip Grip Model

**Star-shaped nut for hammering**  
Tang-Thru type. Make an impact on  
the screw by hammering to loosen it.

The rough surface that  
is produced by the wood powders  
assures beneficial non-slip effect.



**MADE IN JAPAN**



# Wood-Compo Tang-Through Screwdriver

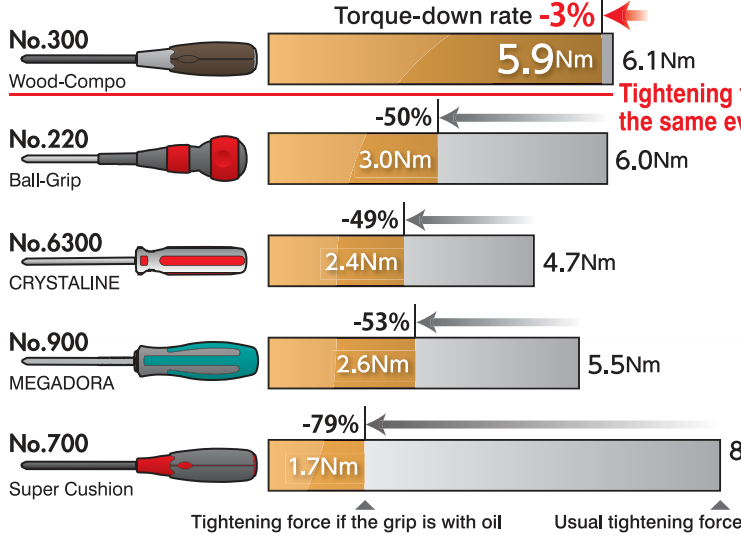
**VESSEL**  
Let us think.

*New*

The shank is made of fully hardened chrome vanadium steel and finished with black chrome plating.

## Such non-slip screwdriver not available before!

Maintenance for cars, motorcycles, and machines, inevitably comes with oil. With such non-slip Wood-Compo Screwdrivers, you can feel the efficient torque transmission when tightening screws. This is because the rough surface which is made by wood powder contained in the grip stops the oil flux.



Tightening force is almost the same even under oily condition!



*PAT. New*

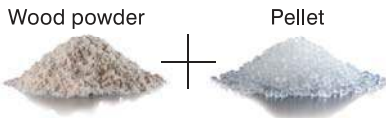
### No. B-330 Wood-Compo Tang-Through Screwdriver

Size	mm						Inner Ctn.	Outer Ctn.	EDP No.
	Shank Dia	Tip Dia	Tip Length	Shank Length	Shank Dia	Shank Length			
⌀5.5 × 75	5.5	0.8	75	5.5	30	183	6	120	120041
⌀6 × 100	6.0	0.9	100	6.4	32	217	6	120	120042
⌀6 × 150	6.0	0.9	150	6.4	32	267	6	60	120043
⌀8 × 150	8.0	1.1	150	8.0	35	277	6	60	120044
⌀1 × 75	⌀No.1	75	5.5	30	183	6	120	120045	
⌀2 × 100	⌀No.2	100	6.4	32	217	6	120	120046	
⌀2 × 150	⌀No.2	150	6.4	32	267	6	60	120047	
⌀3 × 150	⌀No.3	150	8.0	35	277	6	60	120048	

※The B-330 is supplied with a hanging card.

## Wood-Plastic Composite

The grip part is formed by the mold injection of a "wood resin", which consists of 70% wood and 30% plastic, utilizing uniquely developed technologies. The product offers to the users such texture and comfort as the natural wood materials.



## More sizes are now available even in the standard series.



*PAT. New*

### No. 320 Wood-Compo Screwdriver (Stubby Type)

Size	mm						Inner Ctn.	Outer Ctn.	EDP No.
	Shank Dia	Tip Dia	Tip Length	Shank Length	Shank Dia	Shank Length			
⌀6 × 15	6.0	0.9	15	6.0	35	68	6	120	120035
⌀2 × 15	⌀No.2	15	6.0	35	68	6	120	120037	

● Product specifications, dimensions, and other information are subject to change without notice.



*PAT.*

### No. 300 Wood-Compo Screwdriver

Size	mm						Inner Ctn.	Outer Ctn.	EDP No.
	Shank Dia	Tip Dia	Tip Length	Shank Length	Shank Dia	Shank Length			
⌀5.5 × 75	5.5	0.8	75	5.5	30	182	6	120	120021
⌀6 × 100	6.0	0.9	100	6.4	32	215	6	120	120022
<i>New</i> ⌀6 × 150	6.0	0.9	150	6.4	32	265	6	120	120027
⌀8 × 150	8.0	1.1	150	8.0	35	275	6	120	120023
⌀1 × 75	⌀No.1	75	5.5	30	182	6	120	120024	
⌀2 × 100	⌀No.2	100	6.4	32	215	6	120	120025	
<i>New</i> ⌀2 × 150	⌀No.2	150	6.4	32	265	6	120	120029	
⌀3 × 150	⌀No.3	150	8.0	35	275	6	120	120026	

## VESSEL Co., Inc.

17-25, Fukae-Kita 2-chome, Higashinari-ku, Osaka 537-0001 JAPAN  
Tel : +81(0)6 6976 7778 Fax : +81(0)6 6972 9441

E-mail : export@vessel.co.jp URL : http://www.vessel.co.jp/english/

Distributed by

16050121.02