

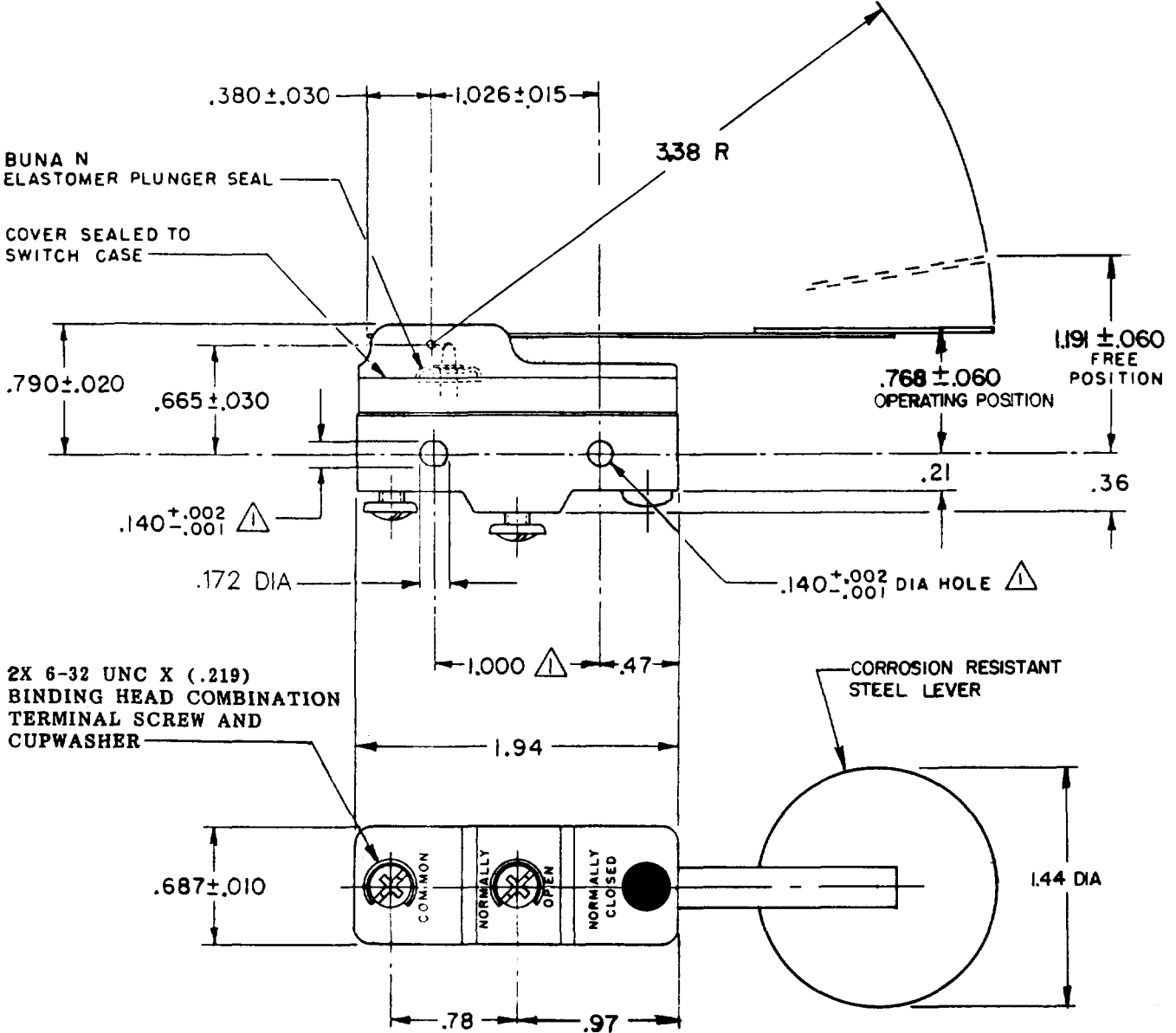
MICRO SWITCH
 FREEPORT ILLINOIS, U S A
 A DIVISION OF HONEYWELL
 FED. MFG. CODE 91929

SWITCH - BASIC

CATALOG LISTING
YZ-3RW845547-A2-S

CATALOG LISTING
YZ-3RW845547-A2-S
 PAGE 1 OF 1

RELEASE NO. **PR-8876**



2X 6-32 UNC X (.219)
 BINDING HEAD COMBINATION
 TERMINAL SCREW AND
 CUPWASHER

- NOTES**
- △ MOUNTING HOLES WILL ACCEPT PINS OR SCREWS OF .139 MAX DIA ON 1.000 ±.002 CENTERS
 - 2 - SEALED CONSTRUCTION PROVIDES SPLASH RESISTANCE

ISSUE
M
7

A	C048226	TSM	28 AUG 90
B	C067209	JAP	2 MAY 90
C	CO-73287-J	JAL	22 NOV 93
D	CO-77588	TSM	29 MAR 94
E	C093346	DLT	22 SEP 98
F	0000953	CSL	24 JUL 03

CHECK
 12 JUNE 80
 9 JUNE 80
 9 JUNE 80
 DRAWN
JEF

THIS DRAWING COVERS A PROPRIETARY ITEM AND IS THE PROPERTY OF MICRO SWITCH, A DIVISION OF HONEYWELL. THIS DRAWING IS NOT TO BE COPIED OR USED WITHOUT THE APPROVAL OF MICRO SWITCH.

CHARACTERISTICS

OPERATING FORCE----- 18 GR MAX
 RELEASE FORCE----- 3 GR MIN
 DIFFERENTIAL TRAVEL----- .021-.107
 OVERTRAVEL----- .312 MIN

ELECTRICAL DATA

CONTACT ARRANGEMENT
S P N O

L98
 15A 125, 250 OR 480 VAC
 1/8 HP 125 VAC, 1/4 HP 250 VAC
 1/2A 125 VDC, 1/4A 250 VDC

L288
 L299
 L306

CE **®** **®**
 16A 250V ~ T85 5E4

SCALE FULL

DO NOT SCALE PRINT

TOLERANCES
 APPLY TO DIMEN UNITS. CONVERSIONS ARE ONLY FOR REFERENCE. UNLESS NOTED, TOLERANCES ARE ±

	DIM.	TOL.	DIM.	TOL.
	mm	mm/in	in	mm/in
NO PLACES	X	1/64	X	0.01/08
ONE PLACE	X,X	0.47/018	X,X	0.387/015
TWO PLACES	X,X,X	0.157/008	X,X,X	0.137/008
THREE PLACES	X,X,X,X		X,X,X,X	
ANGLES				

DESIGN UNITS SI METRIC US CUSTOMARY

WEIGHT .079 LB