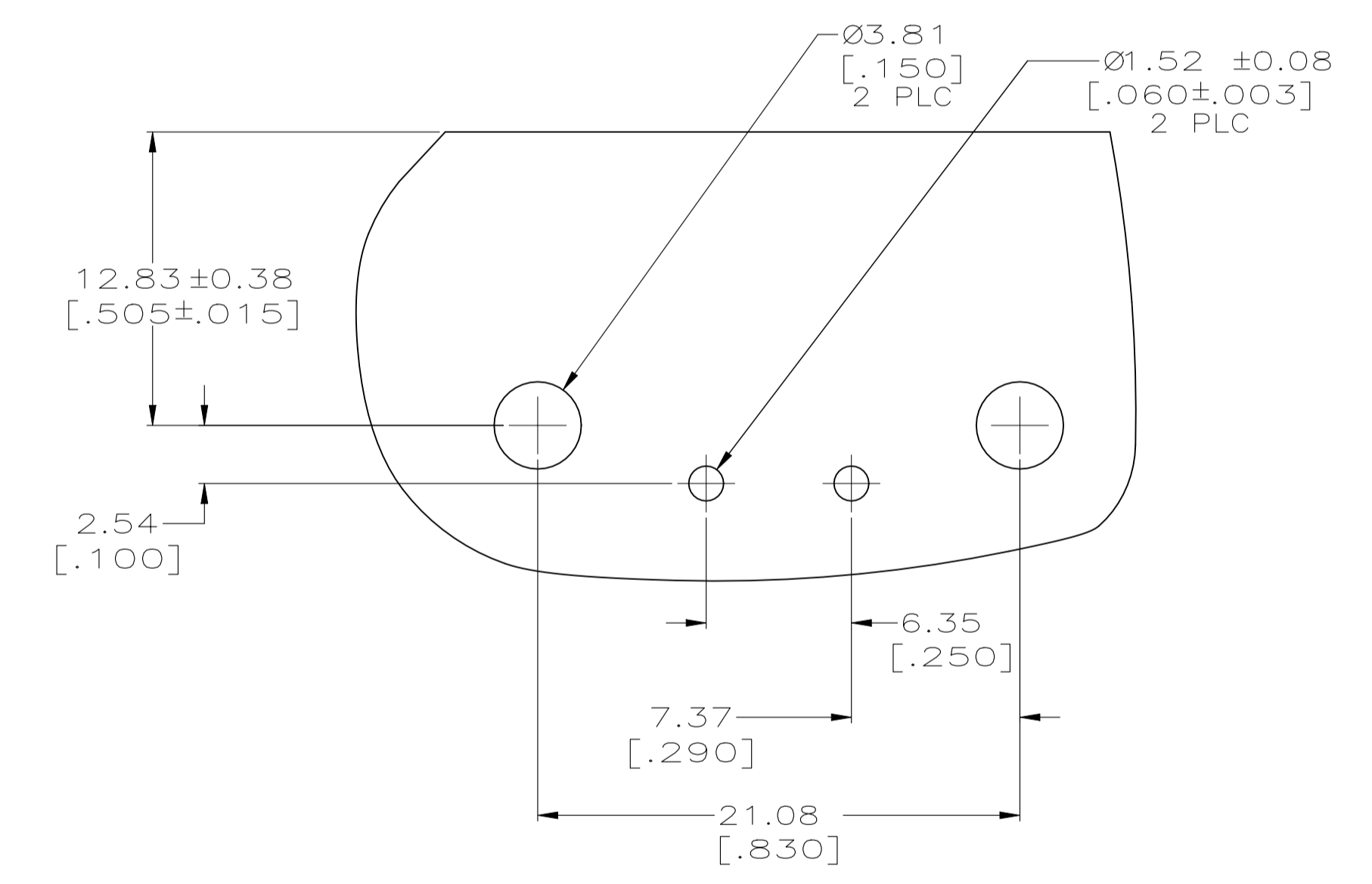
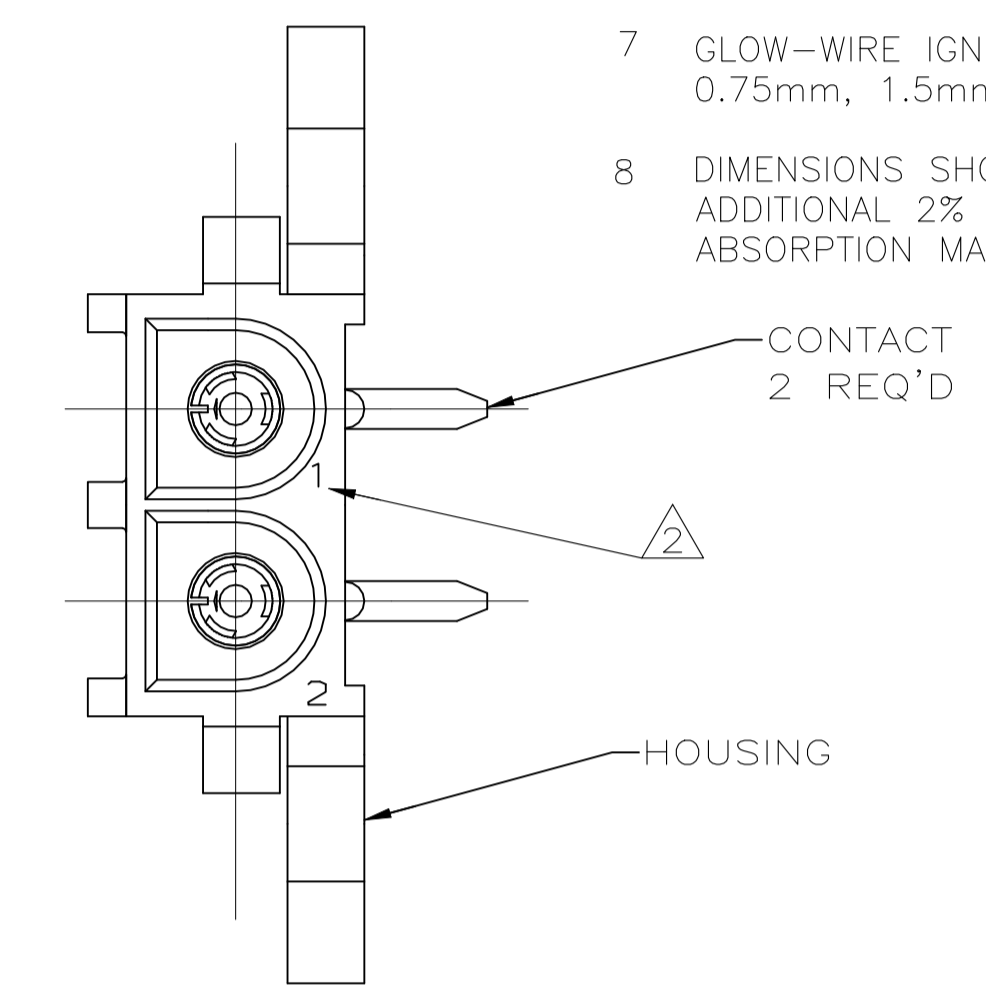
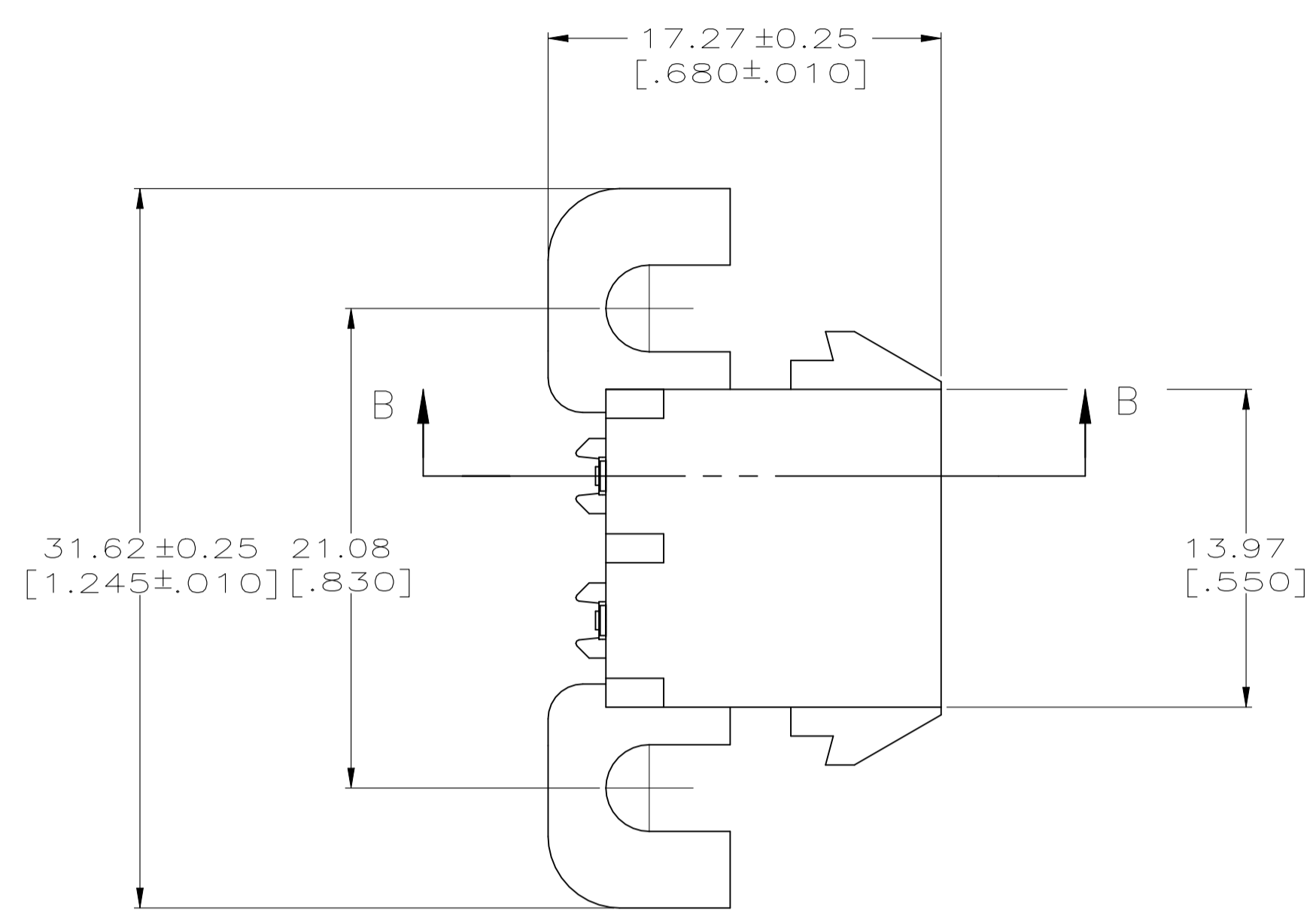
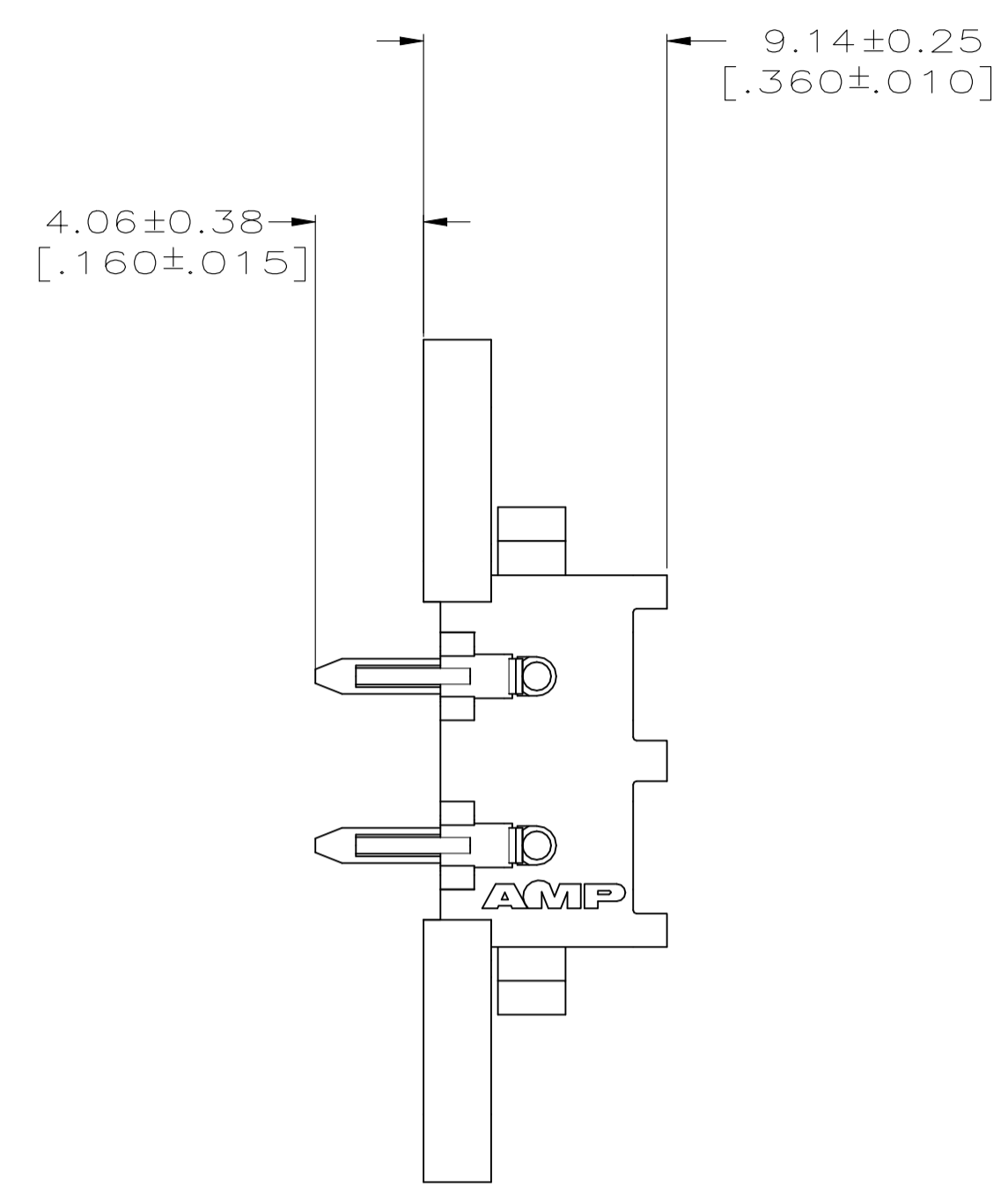
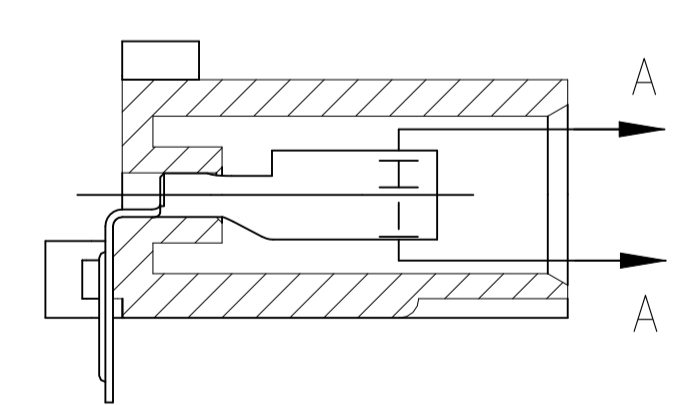


LOC		DIST		REVISIONS			
CM	0	REV	DESCRIPTION	DATE	DRN	APVD	
B1			REVISED PER ECR-21-119230	02NOV2021	SS	VS	

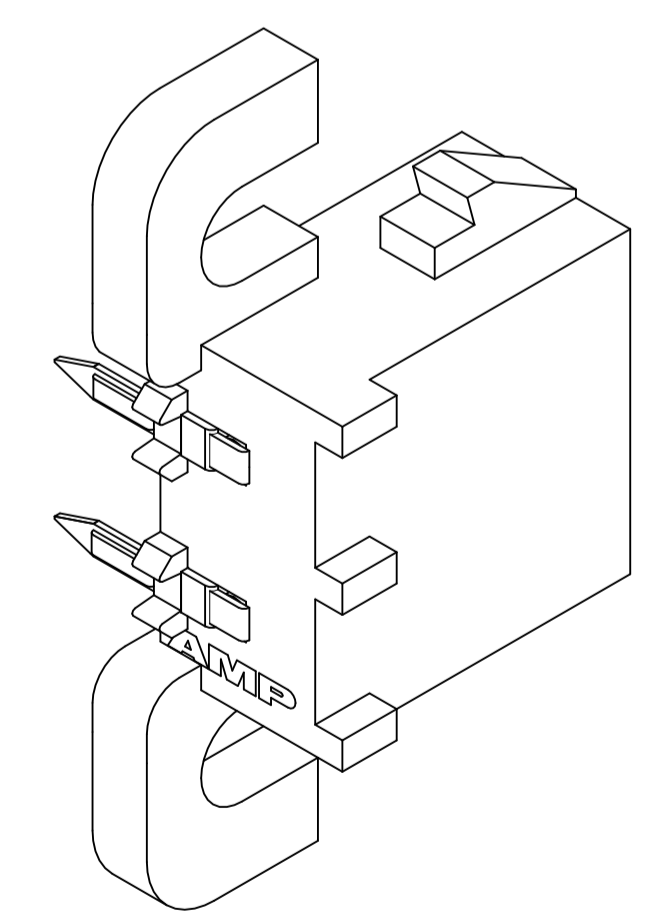
- PARTS COMPLY WITH AMP SOLDERABILITY SPECIFICATION 109-11-5.
- △ CIRCUIT IDENTIFICATION CHARACTERS ARE ADJACENT TO THE INDICATED CAVITIES, BUT LOCATION AND ORIENTATION MAY DIFFER FROM PRINT.
- DIMENSIONS IN BRACKETS ARE IN INCHES.
- FLAMMABILITY V2 FOR THICKNESS 0.38mm, 1.5mm, and 3.0mm PER IEC 60695-11-10.
- GLOW-WIRE FLAMMABILITY (GWFI) 800°C FOR THICKNESS 0.38mm AND 0.75mm PER IEC 60695-2-12.
- GLOW-WIRE FLAMMABILITY (GWFI) 960°C FOR THICKNESS 1.5mm AND 3.0mm PER IEC 60695-2-12.
- GLOW-WIRE IGNITION (GWIT) 825°C FOR THICKNESS 0.38mm, 0.75mm, 1.5mm AND 3.0mm PER IEC 60695-2-13.
- DIMENSIONS SHOWN REPRESENT PRODUCT IN DRY CONDITION. ADDITIONAL 2% GROWTH DUE TO END USE LOCATION MOISTURE ABSORPTION MAY OCCUR AND SHOULD BE ACCOUNTED FOR.



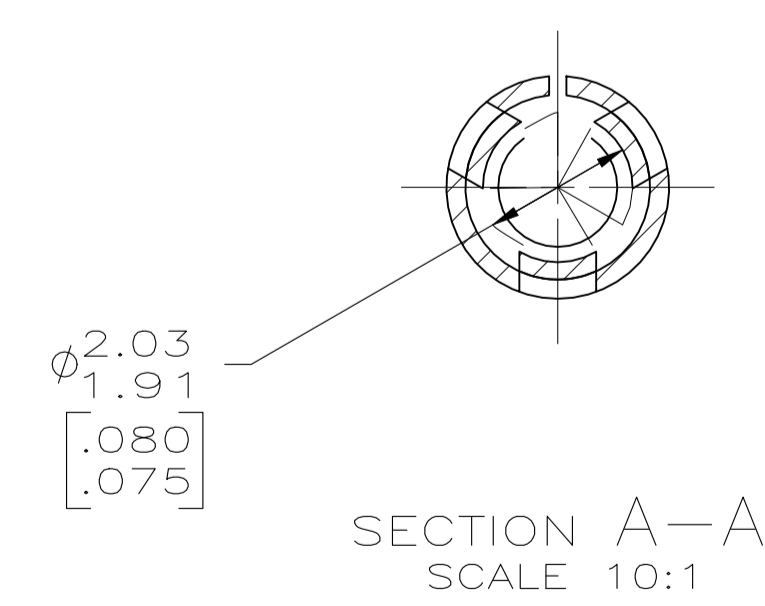
RECOMMENDED MOUNTING HOLE PATTERN FOR .062 [1.57] THICK P.C. BOARD



SECTION B-B



3-DIMENSIONAL MODEL NTS



SECTION A-A SCALE 10:1

METRIC

PH BRZ TIN	NYLON UL94V-2	1586890-1
CONTACT	HOUSING	PART NO
THIS DRAWING IS A CONTROLLED DOCUMENT.		
DIMENSIONS: mm [NCHES]		TOLERANCES UNLESS OTHERWISE SPECIFIED:
0. PLC ± - 1. PLC ± - 2. PLC ± - 3. PLC ± 0.13(.005) 4. PLC ± - ANGLES ± -		FINISH SEE TABLE
MATERIAL SEE TABLE		FINISH SEE TABLE
THIS DRAWING IS A CONTROLLED DOCUMENT.		DRAWING NO. 1586890
CUSTOMER DRAWING		SCALE 4:1 SHEET 1 OF 1 REV B1