

PART NUMBER	REV	TERMINATOR	FEED TYPE	DESCRIPTION
1529275-1	A	BENCH & LEADMAKER	MECH POST FEED	HDI APPLICATOR
7-1529275-1	A	BENCH & LEADMAKER	MECH POST FEED	-1 AND SPARE PARTS
7-1529275-7	A	-	-	SPARE PARTS KIT

SET UP GAGE		REVISIONS			
LOC	DIST	REV	DATE	BY	APPV
A	66	A	27AUG2008	RK	GB

CRIMP DATA INARCA TERMINAL TE CRIMP SPECS

CRIMP	SIZE	TYPE	RANGE
WIRE	2.79 [.110 IN]	F	1.00-2.50mm ²
INSUL	4.57 [.180 IN]	F	2.40-4.00 [.094-.157 IN]

WIRE STRIP LENGTH 4.96-5.76 [.195-.227 IN]

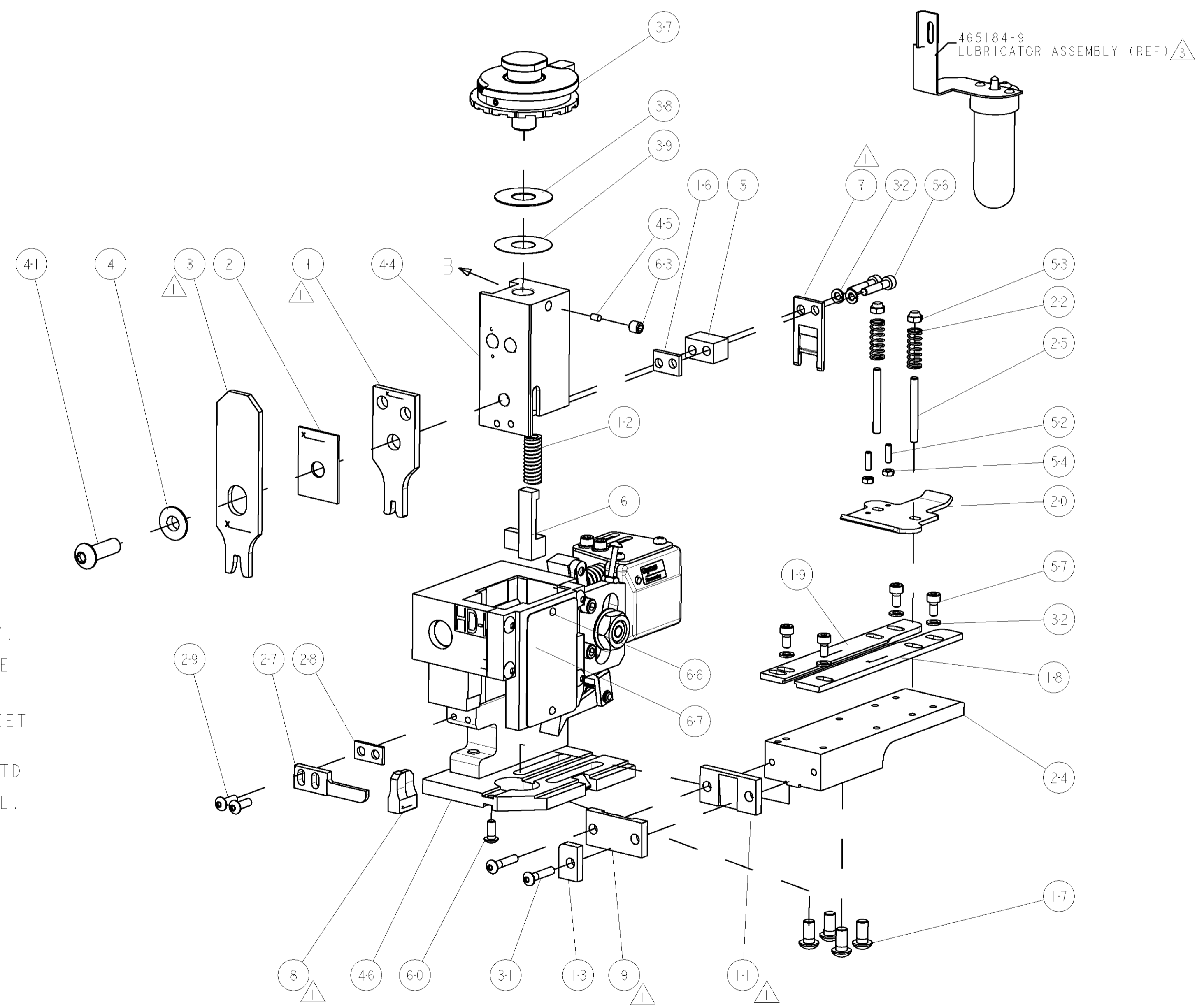
APPL INSTRUCTIONS 408-8323 & 408-8490

TERMINAL APPL SPEC	FEED
-	30.00 [1.181 IN]

TERMINALS APPLIED

TE TERM PN	MANUF TERM PN	-	-
1949754-1	0010689001	-	-
1949754-2	0010689201	-	-
1949754-3	0110689001	-	-
1949754-4	0110689201	-	-

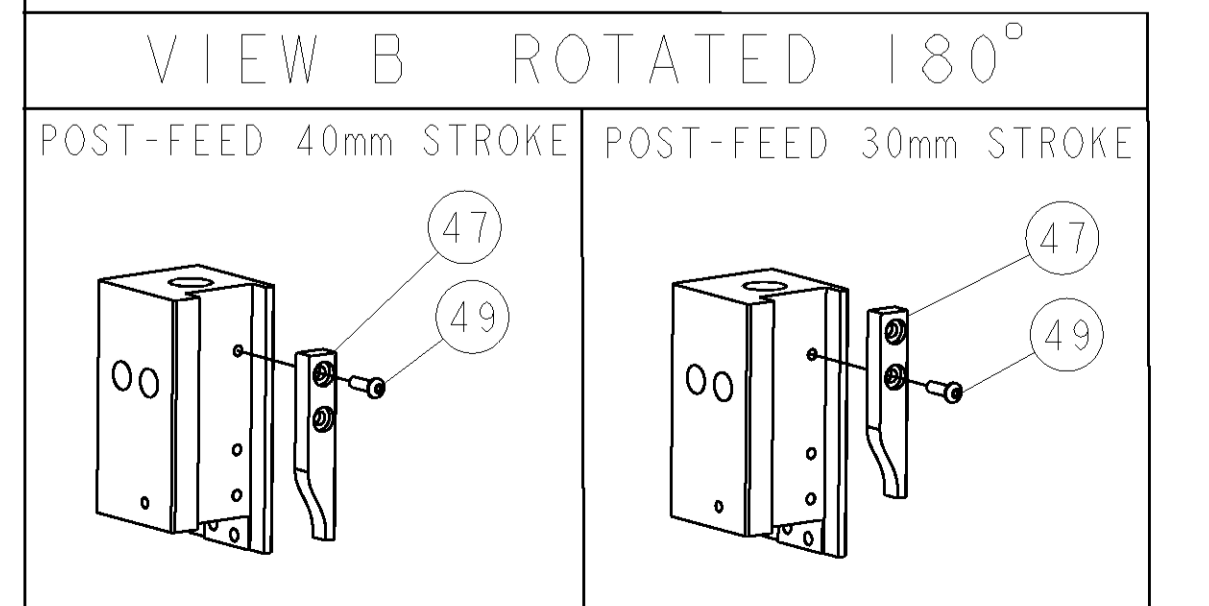
WIRE SIZE	CRIMP HEIGHT	REF SETTING
2.50mm ²	2.03 ± 0.05 [.080 ± .002 IN]	B1
2.00mm ²	1.91 ± 0.05 [.075 ± .002 IN]	C1
1.50mm ²	1.75 ± 0.05 [.069 ± .002 IN]	D0
1.00mm ²	1.60 ± 0.05 [.063 ± .002 IN]	E6



- 1 RECOMMENDED SPARE PARTS
- 2. GREASE RAM, CAM, CAM FOLLOWER AND FEED ROD LIGHTLY.
- 3 CERTAIN TERMINALS REQUIRE LUBRICATION. REFER TO THE APPLICATOR INSTRUCTION SHEET FOR MORE INFORMATION.
- 4. LUBRICATE DAILY PER THE APPLICATOR INSTRUCTION SHEET SUPPLIED WITH THE APPLICATOR.
- 5 ALL CRIMP DATA CALCULATED BY TYCO ELECTRONICS UK LTD
- 6 WIRE AND INSULATION RANGES ARE THAT OF THE TERMINAL.

*** WARNING**

ON INSTALLATION, SET WIRE DISC TO LARGEST WIRE SIZE SETTING. USE OF SETTINGS BELOW MIN. REQUIRED CRIMP HEIGHT SETTING WILL CAUSE DAMAGE TO CRIMP TOOLING.



-	1	1	1338705-4	DOCUMENTATION PACKAGE	71
-	1	1	461264-5	PLATE, IDENTIFICATION	67
-	2	2	21017-2	SCREW, DRIVE	66
-	1	1	3-18031-0	SCR, SET, CUP POINT M6 X 6.0	63
-	1	1	18024-7	SCR, BTN SKT HD CAP (M4 X 10.0)	60
-	4	4	1-18023-0	SCR, SKT HD CAP M4 X 8.0	57
-	2	2	1-18023-4	SCR, SKT HD CAP M4 X 20.0	56
-	2	2	18029-1	NUT, HEX, REG M3	54
-	2	2	986965-1	NUT, LOCK, HEX, TORQUE (M4)	53
-	2	2	2-18032-2	SCR, SET, FLT POINT M3 X 10.0	52
-	1	1	18024-3	SCR, BTN SKT HD CAP (M3 X 10.0)	49
-	1	1	1338676-1	CAM, UNIVERSAL POST-FEED	47
-	1	1	1338662-1	SUB ASSY, APPLICATOR FRAME	46
-	1	1	690191-1	PLUG, NYLON	45
-	1	1	1333260-1	RAM	44
-	1	1	2-18024-6	SCR, BTN SKT HD CAP (M8 X 25.0)	41
-	1	1	690125-1	SHIM SUB-ASSY	39
-	1	1	1-469367-2	SHIM	38
-	1	1	879103-2	FINE ADJUST HEAD ASSEMBLY	37
-	6	6	18025-2	WASHER, SPRG LOCK, REG M4	32
-	2	2	1-18024-0	SCR, BTN SKT HD CAP (M4 X 20.0)	31
-	2	2	18024-8	SCR, BTN SKT HD CAP (M4 X 12.0)	29
-	1	1	3-690451-2	SPACER, STRIPPER	28
-	1	1	240639-1	STRIPPER (MACHINING)	27
-	2	2	1320906-1	STUD, THREADED	25
-	1	1	1320995-5	PLATE, STRIP GUIDE	24
-	2	2	2-22281-6	SPRING, COMPRESSION	22
-	1	1	1338665-1	DRAG	20
-	1	1	458030-4	STRIP GUIDE, REAR	19
-	1	1	458031-4	STRIP GUIDE, FRONT	18
-	4	4	1-18024-8	SCR, BTN SKT HD CAP (M6 X 12.0)	17
-	1	1	1338708-1	SPACER, SLUG BLADE	16
-	1	1	2-690481-0	SPACER, HOLD DOWN	13
-	1	1	23846-1	SPRING, DIE	12
-	1	1	240644-9	PLATE, REAR SHEAR	11
-	-	-	-	-	10
-	1	1	5-690482-9	PLATE, FRONT SHEAR	9
-	1	2	1633387-2	ANVIL, COMBINATION	8
-	1	1	690474-3	BLADE, SLUG	7
-	1	1	8-455892-6	HOLD DOWN, TERMINAL	6
-	1	1	2-240641-6	SPACER	5
-	1	1	238009-1	BLOCK, FL CRIMPER SPACER	4
-	1	2	3-1424909-0	CRIMPER, INSULATION F	3
-	1	1	1-455888-0	SPACER, CRIMPER	2
-	1	2	3-456408-3	CRIMPER, WIRE PREMIUM	1
-	77	-71	-1	PART NO	ITEM NO

DIMENSIONS: INCHES TOLERANCES UNLESS OTHERWISE SPECIFIED: 0 PLC ± .01 1 PLC ± .01 2 PLC ± .01 3 PLC ± .001 4 PLC ± .001 ANGLES ± .0001		DWN L. LOETHOUSE 05AUG2008 CHK T. ELBIN 27AUG2008 APVD M. CLIFFORD 05AUG2008 PRODUCT SPEC APPLICATION SPEC WEIGHT CUSTOMER DRAWING		Tyco Electronics Harrisburg, PA 17105-3608 NAME: FINE ADJUST END FEED HDI APPLICATOR SIZE: A1 CAGE CODE: 00779 DRAWING NO: 1529275 SCALE: 3:5 SHEET: 1 OF 1 REV: A	
---	--	--	--	--	--