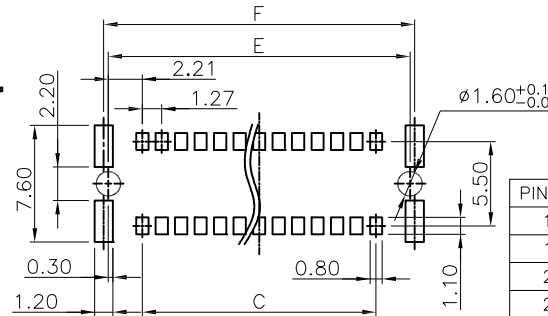
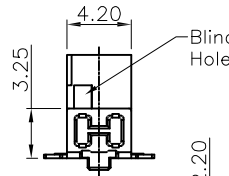
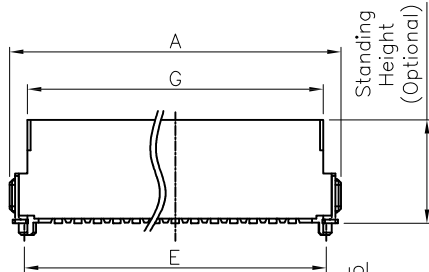
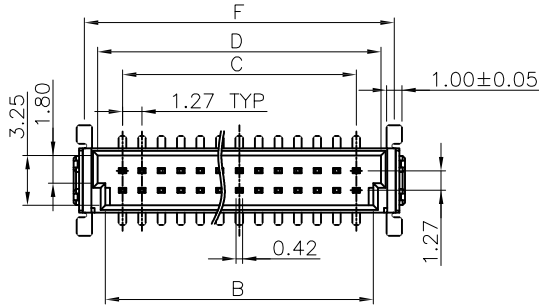
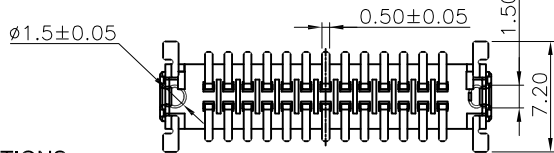
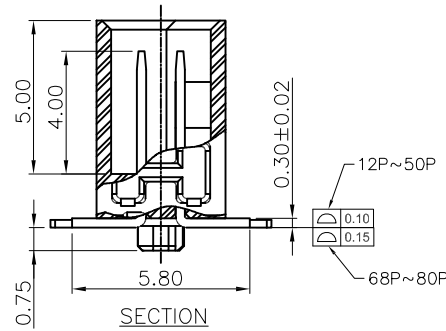


APPROVED: _____
 DATE: _____ TITLE: _____

Rev	AWO #	Description	Date	Appr
-		RELEASED	3/20/17	
A		ADDED PIN NUMBER OPTION	4/16/18	HR/TY
B		UPDATE DRAWING	3/19/20	LH/AC



RECOMMENDED PCB LAYOUT



PIN NO.	A	B	C	D	E	F	G
12	12.70	8.57	6.35	9.57	10.77	11.34	10.37
16	15.24	11.11	8.89	12.11	13.31	13.88	12.91
20	17.78	13.65	11.43	14.65	15.85	16.42	15.45
24	20.32	16.19	13.97	17.19	18.39	18.96	17.99
26	21.59	17.46	15.24	18.46	19.66	20.23	19.26
30	24.13	20.00	17.78	21.00	22.20	22.77	21.80
32	25.40	21.27	19.05	22.27	23.47	24.04	23.07
40	30.48	26.35	24.13	27.35	28.55	29.12	28.15
50	36.83	32.70	30.48	33.70	34.90	35.47	34.50
68	48.26	44.13	41.91	45.13	46.33	46.90	45.93
80	55.88	51.75	49.53	52.75	53.95	54.52	53.55

SPECIFICATIONS:

Material:
 Insulator: Hi-temp thermoplastic, rated UL 94V-0
 Insulator color: Black
 Contacts: Phosphor Bronze
 Board Lock: Brass, Tin plated
 Plating:
 Gold flash over Nickel underplate on contact area,
 Tin over Nickel underplate on solder tails
Electrical:
 Current rating: 1.2 A max
 Contact resistance: 25 mohms max
 Insulation resistance: 1,000 Mohms min
 Withstanding voltage: 500 VAC for 1 minute
Temperature Rating:
 Operating temperature: -55°C to +125°C
Environmental:
 Lead free, RoHS compliant.



PACKAGED ON TAPE & REEL

UNLESS OTHERWISE SPECIFIED ALL DIMENSIONS ARE MILLIMETERS TOLERANCES: EXCEPT AS NOTED	
MM	ANGLE
.X ± 0.35	± 2'
.XX ± 0.20	
.XXX ± 0.10	
APPROVALS	
DRAWN	DATE
CHECKED	
APPROVED	

ADAM TECH INTERCONNECTS
 909 Rahway Avenue,
 Union, NJ 07083
 Phone: 908-687-5000
 Fax: 908-687-5710

TITLE		1.27mm BOARD TO BOARD STACKING CONNECTOR, MALE, VERTICAL, SMT TYPE	
SIZE	PART NO.	REV.	
X	ESMC-M-XX-SGS-SMT-X-PP-T/R	B	
REF: S00242T	SCALE: NTS	SHEET 1 OF 2	

6

5

4

3

2

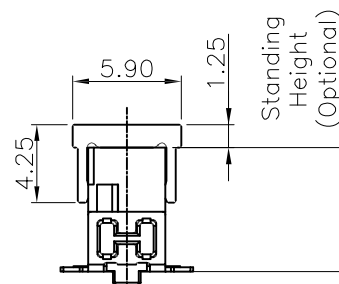
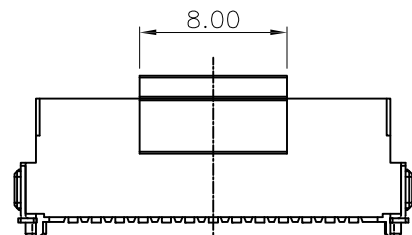
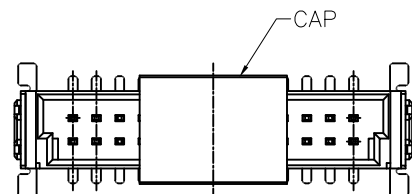
1

APPROVED: _____

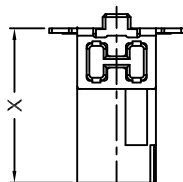
DATE: _____ TITLE: _____

Rev	AWO #	Description	Date	Appr
-----	-------	-------------	------	------

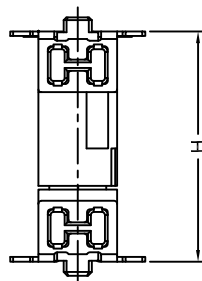
SEE SHT 1 OF 2 FOR REVISION



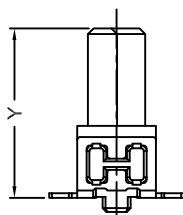
Male Series



Matting →



Female Series



Part No.	Connector Height		Stacking Height
	(X)Male	(Y)Female	H(Matting)
ESMC-M-XX-SGS-SMT-A-PP-T/R	6.75	6.25	8.0
		9.05	10.8
		13.65	15.4
ESMC-M-XX-SGS-SMT-B-PP-T/R	8.25	6.25	9.5
		9.05	12.3
		13.65	16.9
ESMC-M-XX-SGS-SMT-C-PP-T/R	9.85	6.25	11.1
		9.05	13.9
		13.65	18.5

UNLESS OTHERWISE SPECIFIED
 ALL DIMENSIONS ARE MILLIMETERS
 TOLERANCES: EXCEPT AS NOTED

.X	± 0.35	ANGLE	± 2°
.XX	± 0.20		
.XXX	± 0.10		

ADAM TECH
 INTERCONNECTS

909 Rahway Avenue,
 Union, NJ 07083
 Phone: 908-687-5000
 Fax: 908-687-5710

APPROVALS		DATE
DRAWN	AY	3/20/17
CHECKED	MC	3/20/17
APPROVED		

TITLE			
1.27mm BOARD TO BOARD STACKING CONNECTOR, MALE, VERTICAL, SMT TYPE			
SIZE	PART NO.	REV.	
X	ESMC-M-XX-SGS-SMT-X-PP-T/R	B	
REF: S00242T	SCALE: NTS	SHEET 2 OF 2	

6

5

4

3

2

1