
**Appendix A - ATtiny87/ATtiny167 Automotive
Specification at 150°C**

DATASHEET**Description**

This document contains information specific to devices operating at temperatures up to 150°C. Only deviations are covered in this appendix, all other information can be found in the complete Automotive datasheet. The complete Automotive datasheet can be found on <http://www.atmel.com>

1. Electrical Characteristics

1.1 Absolute Maximum Ratings

Stresses beyond those listed under “Absolute Maximum Ratings” may cause permanent damage to the device. This is a stress rating only and functional operation of the device at these or any other conditions beyond those indicated in the operational sections of this specification is not implied. Exposure to absolute maximum rating conditions for extended periods may affect device reliability.

Parameters	Test Conditions	Unit
Operating temperature	-55 to +150	°C
Storage temperature	-65 to +175	°C
Voltage on any pin except $\overline{\text{RESET}}$ with respect to ground	-0.5 to $V_{CC} + 0.5$	V
Voltage on $\overline{\text{RESET}}$ with respect to ground	-0.5 to +13.0	V
Maximum operating voltage	6.0	V
DC current per I/O pin	30	mA
DC current V_{CC} and GND	200.0	

1.2 DC Characteristics

$T_A = -40^\circ\text{C}$ to $+150^\circ\text{C}$, $V_{CC} = 4.5\text{V}$ to 5.5V (unless otherwise noted)

Parameters	Test Conditions	Symbol	Min.	Typ.	Max.	Unit
Input low voltage, except XTAL1 and $\overline{\text{RESET}}$ pin	$V_{CC} = 4.5\text{V} - 5.5\text{V}$	V_{IL}	-0.5		$+0.2V_{CC}^{(1)}$	V
Input high voltage, except XTAL1 and $\overline{\text{RESET}}$ pins	$V_{CC} = 4.5\text{V} - 5.5\text{V}$	V_{IH}	$0.6V_{CC}^{(2)}$		$V_{CC} + 0.5$	V
Input low voltage, XTAL1 pin	$V_{CC} = 4.5\text{V} - 5.5\text{V}$	V_{IL1}	-0.5		$+0.1V_{CC}^{(1)}$	V
Input high voltage, XTAL1 pin	$V_{CC} = 4.5\text{V} - 5.5\text{V}$	V_{IH1}	$0.7V_{CC}^{(2)}$		$V_{CC} + 0.5$	V
Input low voltage, $\overline{\text{RESET}}$ pin	$V_{CC} = 4.5\text{V} - 5.5\text{V}$	V_{IL2}	-0.5		$0.2V_{CC}^{(1)}$	V
Input high voltage, $\overline{\text{RESET}}$ pin	$V_{CC} = 4.5\text{V} - 5.5\text{V}$	V_{IH2}	$0.9V_{CC}^{(2)}$		$V_{CC} + 0.5$	V
Input low voltage, $\overline{\text{RESET}}$ pin as I/O	$V_{CC} = 4.5\text{V} - 5.5\text{V}$	V_{IL3}	-0.5		$0.2V_{CC}^{(1)}$	V
Input high voltage, $\overline{\text{RESET}}$ pin as I/O	$V_{CC} = 4.5\text{V} - 5.5\text{V}$	V_{IH3}	$0.8V_{CC}^{(2)}$		$V_{CC} + 0.5$	V
Output low voltage ⁽³⁾ , I/O pin except $\overline{\text{RESET}}$	$I_{OL} = 10\text{mA}$, $V_{CC} = 5\text{V}$	V_{OL}			0.8	V

- Notes:
- “Max” means the highest value where the pin is guaranteed to be read as low
 - “Min” means the lowest value where the pin is guaranteed to be read as high
 - Although each I/O port can sink more than the test conditions (20mA at $V_{CC} = 5\text{V}$) under steady state conditions (non-transient), the following must be observed:
 - The sum of all I_{OL} , for all ports, should not exceed 400mA.
 - The sum of all I_{OL} , for ports C0 - C5, should not exceed 200mA.
 - The sum of all I_{OL} , for ports C6, D0 - D4, should not exceed 300mA.
 - The sum of all I_{OL} , for ports B0 - B7, D5 - D7, should not exceed 300mA.
 If I_{OL} exceeds the test condition, V_{OL} may exceed the related specification. Pins are not guaranteed to sink current greater than the listed test condition.
 - For temperature range $+125^\circ\text{C}$ to $+150^\circ\text{C}$ only. For -40°C to $+125^\circ\text{C}$, refer to ATtiny167 automotive datasheet.

1.2 DC Characteristics (Continued)

$T_A = -40^{\circ}\text{C}$ to $+150^{\circ}\text{C}$, $V_{CC} = 4.5\text{V}$ to 5.5V (unless otherwise noted) (Continued)

Parameters	Test Conditions	Symbol	Min.	Typ.	Max.	Unit
Output high voltage ⁽⁴⁾ , I/O pin except RESET	$I_{OH} = -10\text{mA}$, $V_{CC} = 5\text{V}$	V_{OH}	4.0			V
Input leakage current I/O pin	$V_{CC} = 5.5\text{V}$, pin low (absolute value)	I_{IL}			1	μA
Input leakage current I/O Pin	$V_{CC} = 5.5\text{V}$, pin high (absolute value)	I_{IH}			1	μA
Reset pull-up resistor		R_{RST}	35		65	$\text{k}\Omega$
I/O pin pull-up resistor		R_{PU}	20		50	$\text{k}\Omega$
Power supply current active mode	16MHz, $V_{CC} = 5\text{V}$	I_{CC}		10	15	mA
	8MHz, $V_{CC} = 5\text{V}$	I_{CC}		5.5	8.0	mA
	8MHz, $V_{CC} = 3\text{V}$	I_{CC}		2.8	4.0	mA
	4MHz, $V_{CC} = 3\text{V}$	I_{CC}		1.8	3.0	mA
Power supply current idle mode	16MHz, $V_{CC} = 5\text{V}$	I_{CC}		3.5	6.0	mA
	8MHz, $V_{CC} = 5\text{V}$	I_{CC}		1.8	3.0	mA
	8MHz, $V_{CC} = 3\text{V}$	I_{CC}		1.0	2.0	mA
	4MHz, $V_{CC} = 3\text{V}$	I_{CC}		0.5	1.0	mA
Power supply current power-down mode	WDT enabled, $V_{CC} = 5\text{V}$	I_{CC}		7	150	μA
	WDT disabled, $V_{CC} = 5\text{V}$	I_{CC}		0.18	150	μA
	WDT enabled, $V_{CC} = 3\text{V}$	I_{CC}		5	150	μA
	WDT disabled, $V_{CC} = 3\text{V}$	I_{CC}		0.15	100	μA
Analog comparator input leakage current	$V_{CC} = 5\text{V}$ $V_{in} = V_{CC}/2$	I_{ACLK}	-50		+50	nA
Analog comparator propagation delay	$V_{CC} = 4.0\text{V}$	t_{ACPD}		180		ns

- Notes:
1. "Max" means the highest value where the pin is guaranteed to be read as low
 2. "Min" means the lowest value where the pin is guaranteed to be read as high
 3. Although each I/O port can sink more than the test conditions (20mA at $V_{CC} = 5\text{V}$) under steady state conditions (non-transient), the following must be observed:
 - 1] The sum of all IOL, for all ports, should not exceed 400mA.
 - 2] The sum of all IOL, for ports C0 - C5, should not exceed 200mA.
 - 3] The sum of all IOL, for ports C6, D0 - D4, should not exceed 300mA.
 - 4] The sum of all IOL, for ports B0 - B7, D5 - D7, should not exceed 300mA.
 If IOL exceeds the test condition, VOL may exceed the related specification. Pins are not guaranteed to sink current greater than the listed test condition.
 4. For temperature range $+125^{\circ}\text{C}$ to $+150^{\circ}\text{C}$ only. For -40°C to $+125^{\circ}\text{C}$, refer to ATtiny167 automotive datasheet.

1.3 ADC Characteristics

$T_A = -40^{\circ}\text{C}$ to $+150^{\circ}\text{C}$, $V_{CC} = 4.5\text{V}$ to 5.5V (unless otherwise noted)

Parameters	Test Conditions	Symbol	Min.	Typ.	Max.	Unit
Resolution	Single ended			10		Bit
Absolute accuracy	$V_{CC} = 4\text{V}$, $V_{REF} = 4\text{V}$, ADC clock = 200kHz	TUE		2.0	3.5	LSB
Integral non linearity	$V_{CC} = 4\text{V}$, $V_{REF} = 4\text{V}$, ADC clock = 200kHz	INL		0.6	2.0	LSB
Differential non linearity	$V_{CC} = 4\text{V}$, $V_{REF} = 4\text{V}$, ADC clock = 200kHz, Temp = -40°C to $+150^{\circ}\text{C}$	DNL		0.4	1.5	LSB
Gain error	$V_{CC} = 4\text{V}$, $V_{REF} = 4\text{V}$, ADC clock = 200kHz, Temp = -40°C to $+150^{\circ}\text{C}$		-6.0	-2.5	+2.0	LSB
Offset error	$V_{CC} = 4\text{V}$, $V_{REF} = 4\text{V}$, ADC clock = 200kHz, Temp = -40°C to $+150^{\circ}\text{C}$		-3.5	+1.5	+3.5	LSB
Ref voltage		V_{REF}	2.56		AVCC	V

1.4 Memory Endurance

EEPROM endurance: 50,000 write/erase cycles.

Flash endurance: 10,000 write/erase cycles.

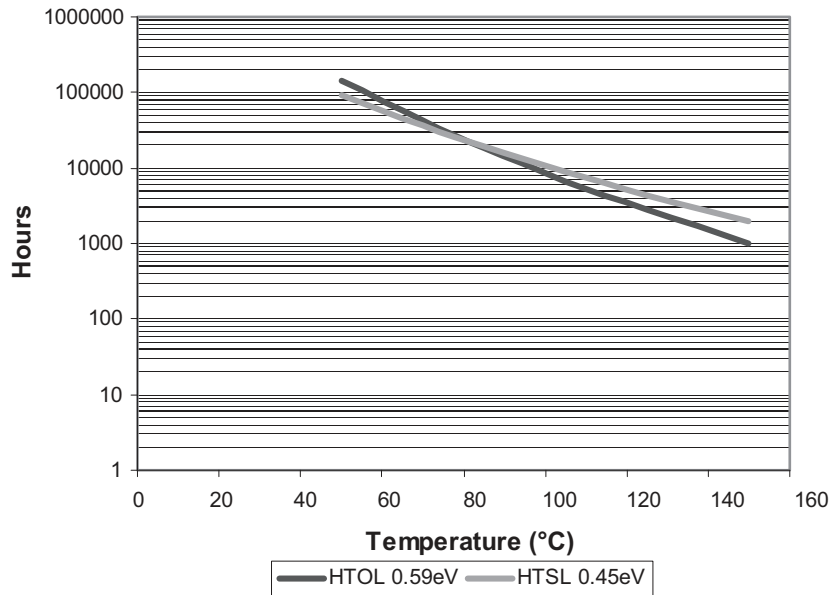
2. Grade 0 Qualification

The ATtiny87/ATtiny167 has been developed and manufactured according to the most stringent quality assurance requirements of ISO-TS-16949 and verified during product qualification as per AEC-Q100 grade 0.

AEC-Q100 qualification relies on temperature accelerated stress testing. High temperature field usage however may result in less significant stress test acceleration. In order to prevent the risk that ATtiny87/ATtiny167 lifetime would not satisfy the application end-of-life reliability requirements, Atmel® has extended the testing, whenever applicable (high temperature operating life test, high temperature storage life, data retention, thermal cycles), far beyond the AEC-Q100 requirements. Thereby, Atmel verified the ATtiny87/ATtiny167 has a long safe lifetime period after the grade 0 qualification acceptance limits.

The valid domain calculation depends on the activation energy of the potential failure mechanism that is considered. Therefore any temperature mission profile which could exceed the AEC-Q100 equivalence domain shall be submitted to Atmel for a thorough reliability analysis

Figure 2-1. AEC-Q100 Lifetime Equivalence



3. Ordering Information

Speed (MHz)	Power Supply	Ordering Code	Package ⁽¹⁾	Operation Range
16 ⁽²⁾	4.5V - 5.5V	ATtiny87-A15MD	PN	Extended (–40°C to +150°C)
16 ⁽²⁾	4.5V - 5.5V	ATtiny87-A15XD	6G	Extended (–40°C to +150°C)
16 ⁽²⁾	4.5V - 5.5V	ATtiny167-A15MD	PN	Extended (–40°C to +150°C)
16 ⁽²⁾	4.5V - 5.5V	ATtiny167-A15XD	6G	Extended (–40°C to +150°C)

- Notes:
1. Pb-free packaging, complies to the european directive for restriction of hazardous substances (RoHS directive). Also halide free and fully green.
 2. For speed versus V_{CC} , see complete datasheet.

4. Package Information

Package Type	
PN	32-pad, 5 × 5 × 1.0mm body, lead pitch 0.50mm, quad flat no-lead/micro lead frame package (QFN/MLF): E2/D2 3.1 ±0.1mm
6G	20-leads, 4.4 × 6.5mm body - 0.65mm pitch - lead length: 0.6mm, thin shrink small outline package (TSSOP)

Figure 4-1. PN

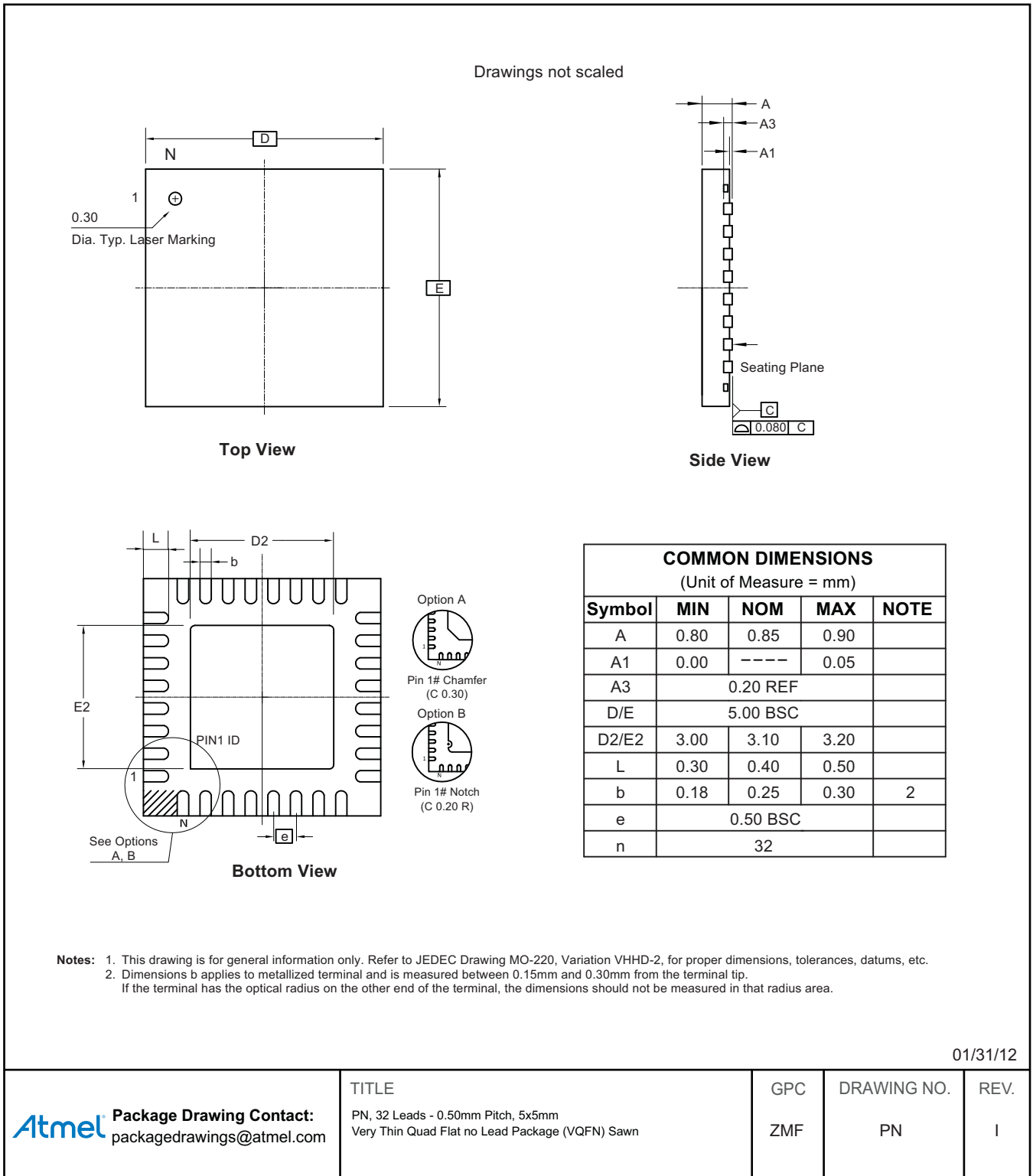
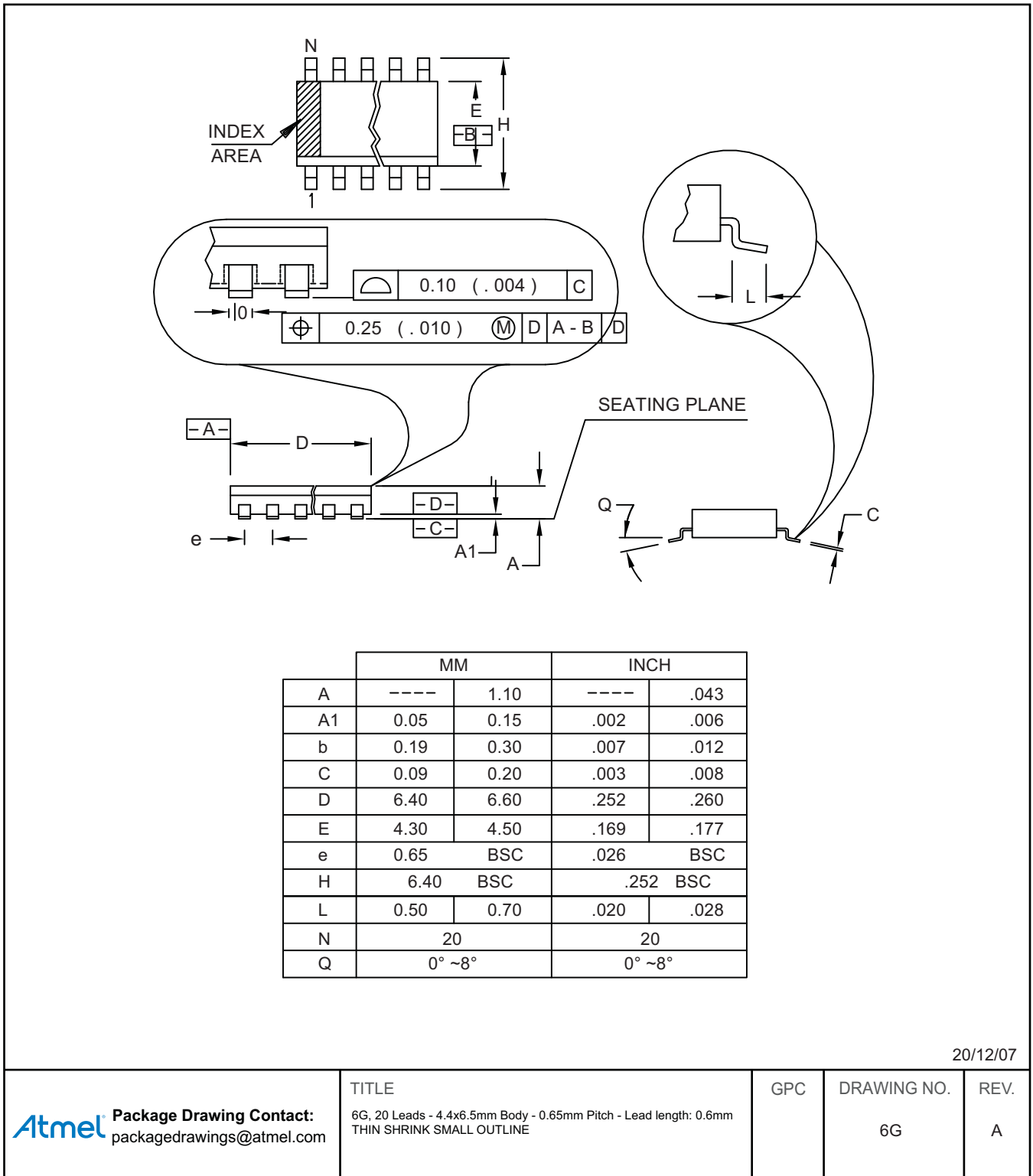


Figure 4-2. 6G



20/12/07

Atmel Package Drawing Contact:
packagedrawings@atmel.com

TITLE
6G, 20 Leads - 4.4x6.5mm Body - 0.65mm Pitch - Lead length: 0.6mm
THIN SHRINK SMALL OUTLINE

GPC	DRAWING NO.	REV.
	6G	A

5. Revision History

Please note that the following page numbers referred to in this section refer to the specific revision mentioned, not to this document.

Revision No.	History
7792D-AVR-08/14	• Put datasheet in the latest template
7792C-AVR-01/14	• Section 3 “Ordering Information” on page 6 updated
7792B-AVR-05/09	• Section 1 “Electrical Characteristics” on pages 2 to 4 updated



Atmel Corporation 1600 Technology Drive, San Jose, CA 95110 USA T: (+1)(408) 441.0311 F: (+1)(408) 436.4200 | www.atmel.com

© 2014 Atmel Corporation. / Rev.: 7792D-AVR-08/14

Atmel®, Atmel logo and combinations thereof, Enabling Unlimited Possibilities®, AVR®, and others are registered trademarks or trademarks of Atmel Corporation in U.S. and other countries. Other terms and product names may be trademarks of others.

DISCLAIMER: The information in this document is provided in connection with Atmel products. No license, express or implied, by estoppel or otherwise, to any intellectual property right is granted by this document or in connection with the sale of Atmel products. EXCEPT AS SET FORTH IN THE ATMEL TERMS AND CONDITIONS OF SALES LOCATED ON THE ATMEL WEBSITE, ATMEL ASSUMES NO LIABILITY WHATSOEVER AND DISCLAIMS ANY EXPRESS, IMPLIED OR STATUTORY WARRANTY RELATING TO ITS PRODUCTS INCLUDING, BUT NOT LIMITED TO, THE IMPLIED WARRANTY OF MERCHANTABILITY, FITNESS FOR A PARTICULAR PURPOSE, OR NON-INFRINGEMENT. IN NO EVENT SHALL ATMEL BE LIABLE FOR ANY DIRECT, INDIRECT, CONSEQUENTIAL, PUNITIVE, SPECIAL OR INCIDENTAL DAMAGES (INCLUDING, WITHOUT LIMITATION, DAMAGES FOR LOSS AND PROFITS, BUSINESS INTERRUPTION, OR LOSS OF INFORMATION) ARISING OUT OF THE USE OR INABILITY TO USE THIS DOCUMENT, EVEN IF ATMEL HAS BEEN ADVISED OF THE POSSIBILITY OF SUCH DAMAGES. Atmel makes no representations or warranties with respect to the accuracy or completeness of the contents of this document and reserves the right to make changes to specifications and products descriptions at any time without notice. Atmel does not make any commitment to update the information contained herein. Unless specifically provided otherwise, Atmel products are not suitable for, and shall not be used in, automotive applications. Atmel products are not intended, authorized, or warranted for use as components in applications intended to support or sustain life.

SAFETY-CRITICAL, MILITARY, AND AUTOMOTIVE APPLICATIONS DISCLAIMER: Atmel products are not designed for and will not be used in connection with any applications where the failure of such products would reasonably be expected to result in significant personal injury or death ("Safety-Critical Applications") without an Atmel officer's specific written consent. Safety-Critical Applications include, without limitation, life support devices and systems, equipment or systems for the operation of nuclear facilities and weapons systems. Atmel products are not designed nor intended for use in military or aerospace applications or environments unless specifically designated by Atmel as military-grade. Atmel products are not designed nor intended for use in automotive applications unless specifically designated by Atmel as automotive-grade.