



■ Features :

- 2:1 wide input range
- High efficiency up to 92%
- 1500VDC I/O isolation
- Built-in EMI filter
- Built-in remote ON / OFF control
- Built-in remote sense
- Trimming output  $\pm 10\%$
- Protections: Short circuit / Overload / Over voltage
- Cooling by free air convection
- Six-sided shield metal case
- 100% burn-in test
- Low cost / High reliability
- Output 3.3V/9V available
- Approvals: FCC / EAC / CE / UKCA
- 2 years warranty

■ GTIN CODE

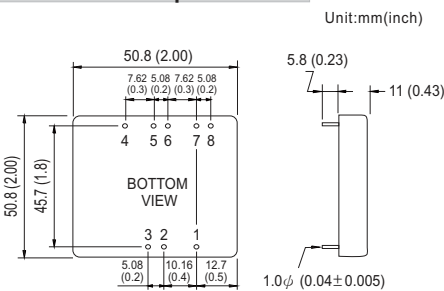
MW Search: <https://www.meanwell.com/serviceGTIN.aspx>



SPECIFICATION

ORDER NO.	SKA40A-05	SKA40B-05	SKA40C-05	SKA40A-12	SKA40B-12	SKA40C-12	SKA40A-15	SKA40B-15	SKA40C-15
OUTPUT	DC VOLTAGE			12V			15V		
	CURRENT RANGE			0.3 ~ 3.33A			0.26 ~ 2.67A		
	RATED POWER			40W			40W		
	RIPPLE & NOISE (max.) Note.2			80mVp-p			100mVp-p		
	LINE REGULATION Note.3			$\pm 0.5\%$					
	LOAD REGULATION Note.4			$\pm 0.5\%$					
	VOLTAGE ACCURACY			$\pm 2.0\%$					
	SWITCHING FREQUENCY			200KHz min.					
INPUT	EXTERNAL CAPACITANCE LOAD (max.)			1000uF					
	EXTERNAL TRIM Adj. RANGE(Typ.)			$\pm 10\%$					
	VOLTAGE RANGE			A: 9 ~ 18VDC B: 18 ~ 36VDC C: 36 ~ 75VDC					
	EFFICIENCY (Typ.)			91% 92% 91% 90% 90% 88.5% 90% 90.5% 90%					
	DC CURRENT			Full load A: 3850mA B: 1900mA C: 1000mA No load A: 150mA B: 100mA C: 65mA					
	FILTER			Pi network					
PROTECTION (Note. 5)	REMOTE CONTROL			Power ON : R.C ~ -Vin > 2.5VDC or open circuit ; Power OFF : R.C ~ -Vin < 0.5VDC or short					
	PROTECTION			Fuse recommended					
	OVER CURRENT			110% ~ 180% rated output power Protection type : Hiccup mode, recovers automatically after fault condition is removed					
	SHORT CIRCUIT			All output equipped with short circuit Protection type : Hiccup mode, recovers automatically after fault condition is removed					
ENVIRONMENT	OVER VOLTAGE			5Vo : 7V ~ 8.95V ; 12Vo : 15V ~ 19.2V ; 15Vo : 18V ~ 23.3V Protection type : Clamp by TVS diode					
	WORKING TEMP.			-40 ~ +80°C (Refer to "Derating Curve")					
	WORKING HUMIDITY			20% ~ 90% RH non-condensing					
	STORAGE TEMP., HUMIDITY			-55 ~ +105°C, 10 ~ 95% RH					
	TEMP. COEFFICIENT			$\pm 0.03\% / ^\circ\text{C}$ (0 ~ 50°C)					
SAFETY & EMC	VIBRATION			10 ~ 500Hz, 2G 10min./1cycle, period for 60min. each along X, Y, Z axes					
	SAFETY STANDARDS			EAC TP TC 020/2011 (EAC TP TC 004 for 48Vin type only) approved					
	WITHSTAND VOLTAGE			I/P-O/P: 1.5KVDC					
	ISOLATION RESISTANCE			I/P-O/P: 100M Ohms / 500VDC / 25°C / 70% RH					
OTHERS	EMC EMISSION			Compliance to BS EN/EN55032 Class A, FCC part 15 Class A, EAC TP TC 020					
	EMC IMMUNITY			Compliance to BS EN/EN61000-4-2,3,4,5,6,8, light industry level, criteria A, EAC TP TC 020					
DIMENSION			50.8*50.8*11.0 mm or 2**2**0.43" inch (L*W*H)						
PACKING			50g ; 5pcs/per tube, 200pcs/40 tube/per carton						

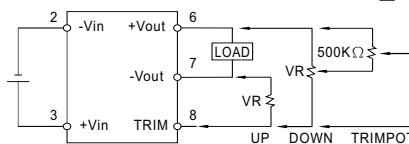
■ Mechanical Specification



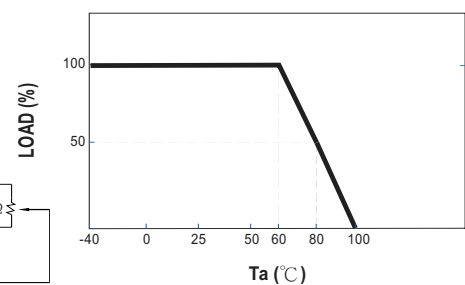
■ Pin Configuration

Pin No.	Output	Pin No.	Output
1	R.C	5	+R.S
2	-Vin	6	+Vout
3	+Vin	7	-Vout
4	-R.S	8	TRIM

■ External Output Trimming



■ Derating Curve



NOTE

1. All parameters are specified at normal input, rated load, 25°C 70% RH ambient.
  2. Ripple & noise are measured at 20MHz by using a 12" twisted pair terminated with a 0.1uF & 47uF capacitor.
  3. Line regulation is measured from low line to high line at rated load.
  4. Load regulation is measured from 10% to 100% rated load.
  5. Please prevent the converter from operating in overload or short circuit condition for more than 30 seconds.
- ※ Product Liability Disclaimer : For detailed information, please refer to <https://www.meanwell.com/serviceDisclaimer.aspx>

■ Packing

Standard Tube Packing	MPQ Per Tube (PCS)	One Tube G.W.	Max. Q'TY/ Carton(PCS)	One Carton G.W.
<p>Unit : mm</p> <p>Product</p> <p>Tube Nails</p> <p>289</p> <p>54</p> <p>22.7</p> <p>7</p> <p>Tube pattern</p> <p>CARTON L600 x W230 x H220</p>	5	320g	200	13.6Kg

■ Installation Manual

Please refer to : <http://www.meanwell.com/manual.html>