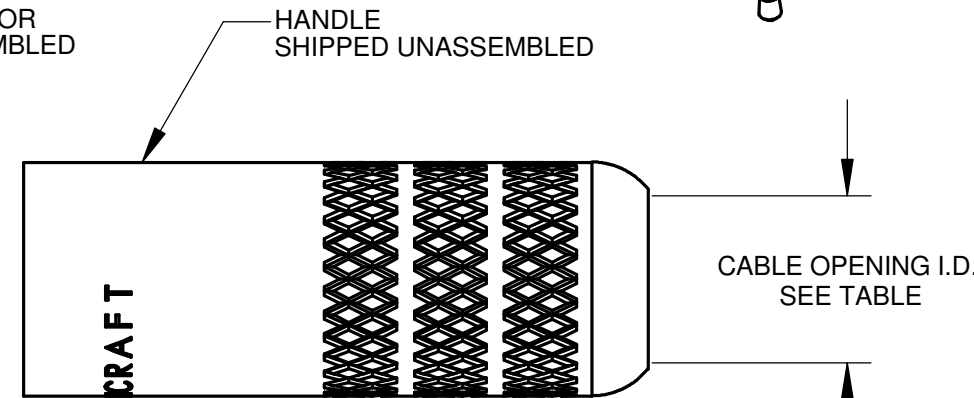
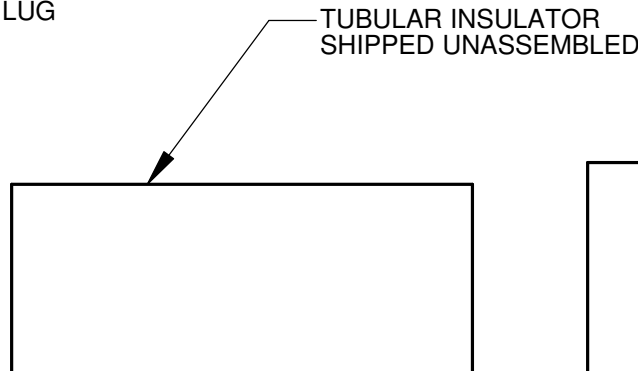
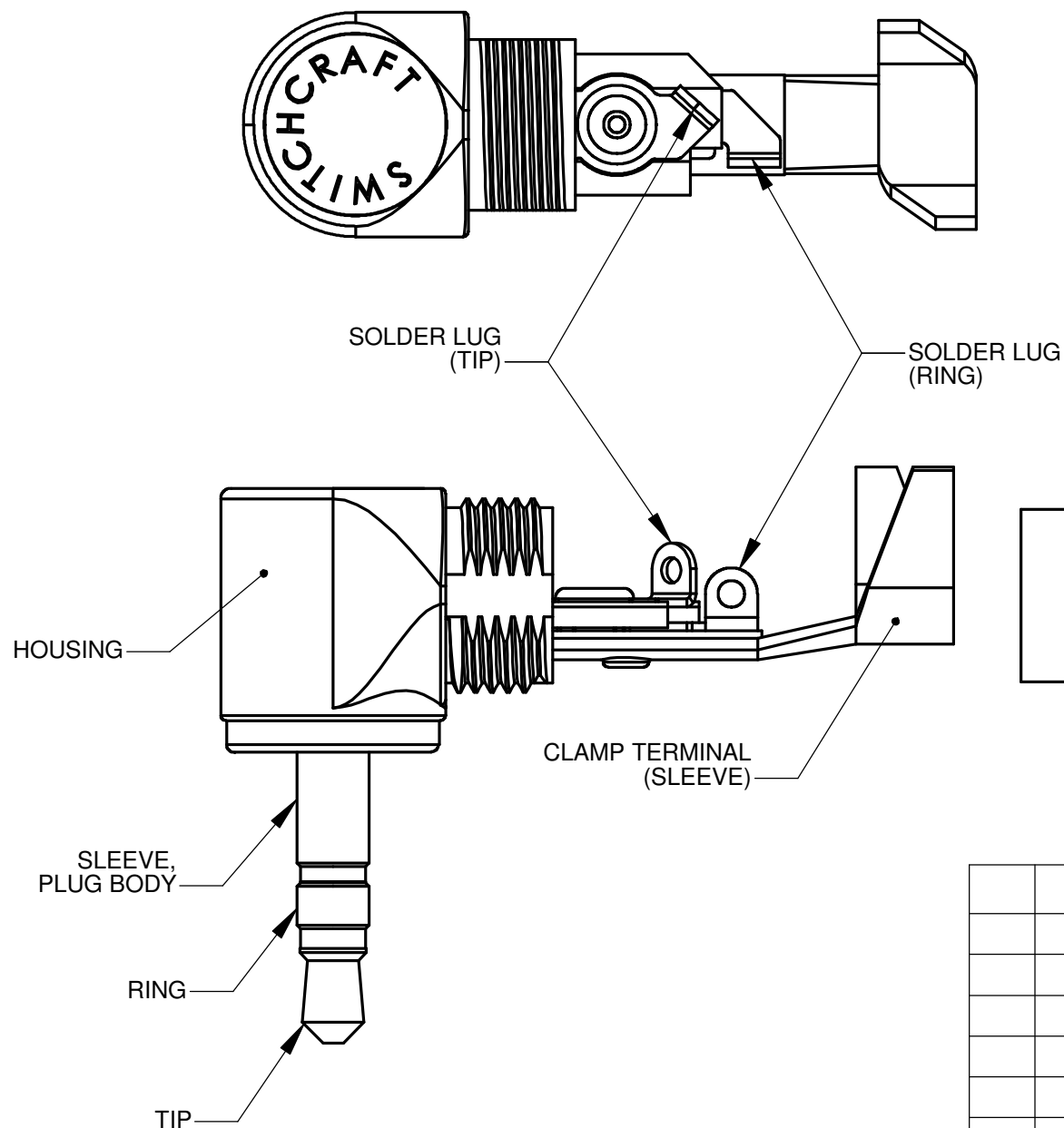
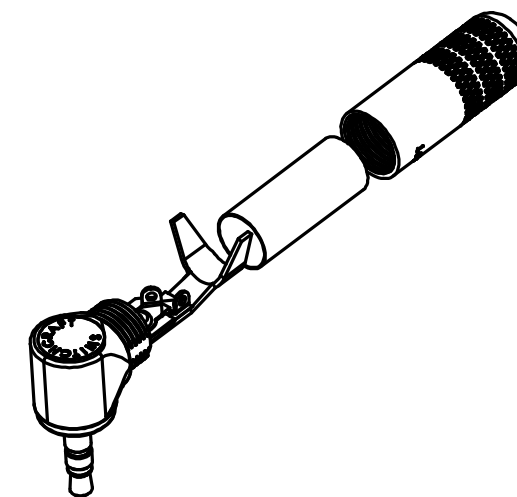
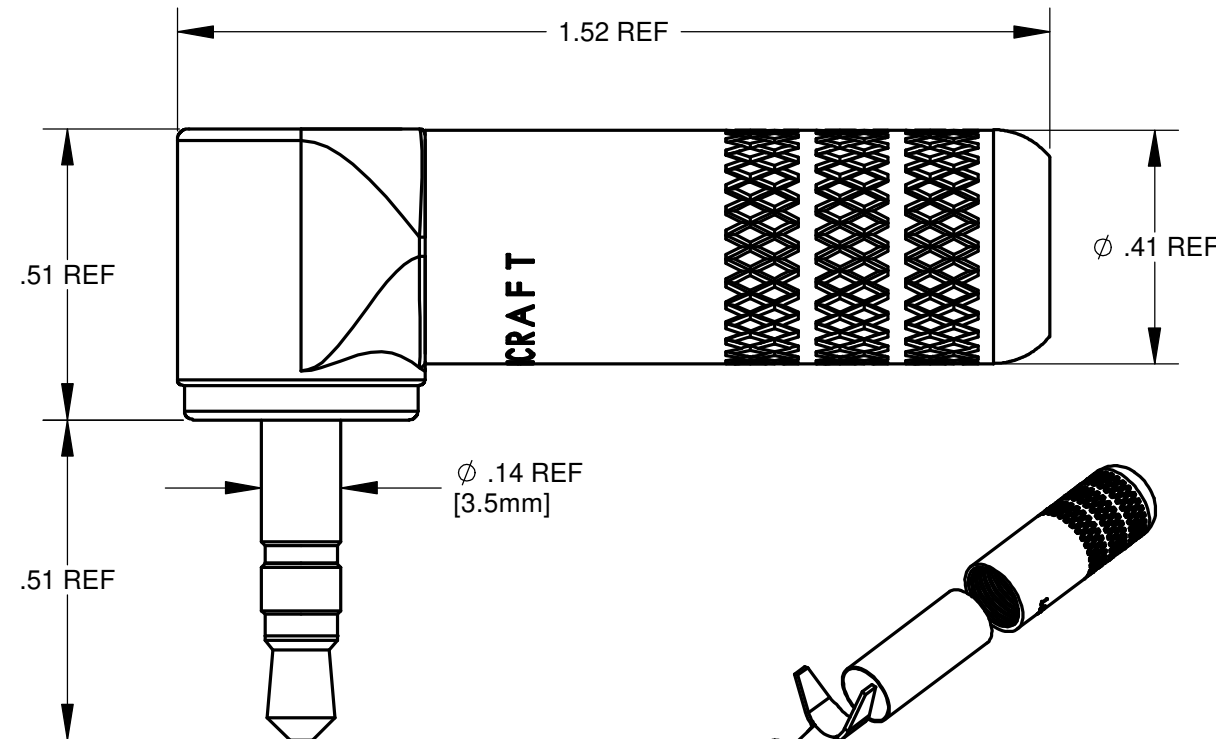


| PART NUMBER | PLUG FINGER | HANDLE | HANDLE CABLE OPENING I.D. |
|-------------|-------------|--------|---------------------------|
| 35HDRABAU | GOLD | BLACK | 0.29 |
| 35HDRABAUS | GOLD | BLACK | 0.175 |
| 35HDRANAU | GOLD | NICKEL | 0.29 |
| 35HDRANAUS | GOLD | NICKEL | 0.175 |
| 35HDRANN | NICKEL | NICKEL | 0.29 |
| 35HDRANNS | NICKEL | NICKEL | 0.175 |

MATERIALS:

- PLUG MOLDING COMPOUND - L.C.P. BLACK
- SLEEVE, PLUG BODY - BRASS, NICKEL OR GOLD PLATED
- RING SLEEVE - BRASS, NICKEL OR GOLD PLATED
- TIP ROD - BRASS, NICKEL OR GOLD PLATED
- HOUSING - ZINC, BLACK OR NICKEL PLATED
- TUBULAR INSULATOR - MYLAR, TRANSLUCENT
- HANDLE - BRASS, BLACK OR NICKEL PLATED
- CLAMP TERMINAL - CRS, TIN PLATED
- SOLDER LUGS (TIP & RING) - BRASS, TIN PLATED



CUSTOMER DRAWING

| REV | ECO NUMBER | DATE | BY | APVD |
|-----------|------------|---------|----|------|
| A | 24662 | 3-23-04 | JL | AKE |
| REVISIONS | | | | |

★ STAR SYMBOL DENOTES CRITICAL DIMENSION

UNLESS OTHERWISE SPECIFIED

- ALL DIMENSIONS IN INCHES
 - TWO PLACE DECIMALS ±0.01
 - THREE PLACE DECIMALS ±0.005
 - ANGLES ±1°
 - ALL DIA. CONCENTRIC WITHIN 0.005 T.I.R.
- FEATURES ON THE SAME CENTERLINE MUST BE ALIGNED WITHIN ±0.002
- REMOVE ALL BURRS

DO NOT SCALE DRAWING

| | | | | | | | | | |
|--|---------|--------|---------|---------------|------------|--|--|--|-------|
| THIS DRAWING DESCRIBES A DESIGN CONSIDERED PROPRIETARY IN NATURE, DEVELOPED AND MANUFACTURED BY SWITCHCRAFT INC. AND IS RELEASED ON A CONFIDENTIAL BASIS FOR IDENTIFICATION PURPOSES ONLY. | | | | | | | | | |
| SIZE * | WIDTH * | MULT * | LBS/M * | TEMPER * | | | | | |
| FINISH * | | | | | MATERIAL * | | | | |
| SPEC No. * | | | | | SPEC No. * | | | | |
| FIRST USED ON * | | | | SCALE 3:1 | | | | | |
| DATE DRAWN | BY | CHKD | APVD | | | | | | |
| 6-27-00 | AKE | AKE | AKE | | | | | | |
| | | | 3-23-04 | | | | | | |
| NAME | | | | PART No. | | | | | |
| 3.5mm RA STEREO PLUG | | | | 35HDRA SERIES | | | | | |
| | | | | | | | | | REV A |

Switchcraft®

SHEET 1 OF 1