

SPECIFICATIONS SHEET

PRODUCT TYPE : MECHANICAL BUZZER

PRODUCT SERIES : BS2316P-06-C-B

DESCRIPTION : MC BUZZER SINGLE 6VDC PIN ABS SP

ADD LABEL MARKING " INTERVOX " " BS2316P-06-C-B "
& " LF DATE CODE "

COLOR : GRAY

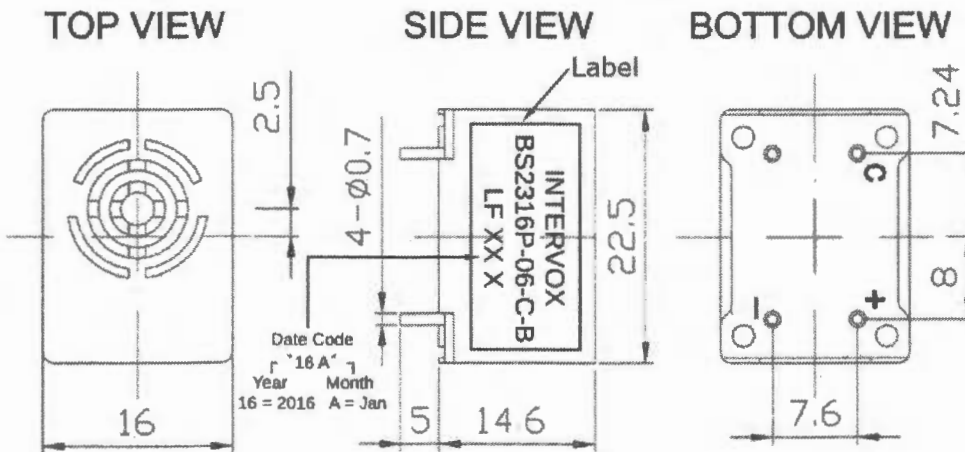
ELECTRICAL SPECIFICATIONS

MODEL NO.	BS2316P-06-C-B	
OPERATING VOLTAGE RANGE (VDC)		3.0 ~ 8.0
RATED VOLTAGE (VDC)		6.0
* MAX. RATED CURRENT (mA)		23.0
MIN. TRIGGER CURRENT (mA)		3.0
* MIN. SOUND OUTPUT (dBA/ 30 cm)		70.0
* FREQUENCY (Hz)		400 ± 100
TONE NATURE		SINGLE
OPERATING TEMPERATURE (° C)		- 20.0 ~ + 70.0
STORAGE TEMPERATURE (° C)		- 30.0 ~ + 75.0
TERMINAL		PIN
HOUSING MATERIAL		ABS
WEIGHT (g)		10.0

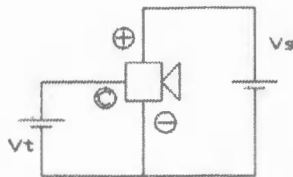
* Value applying at rated voltage

DIMENSIONS

UNIT : mm Tolerance : ± 0.5 mm



Coupled Circuit



Characteristics

Modify :	Date :	By :

Approved By : FG
Date : 14-Jan-2016

Prepared By : LL
Date : 14-Jan-2016