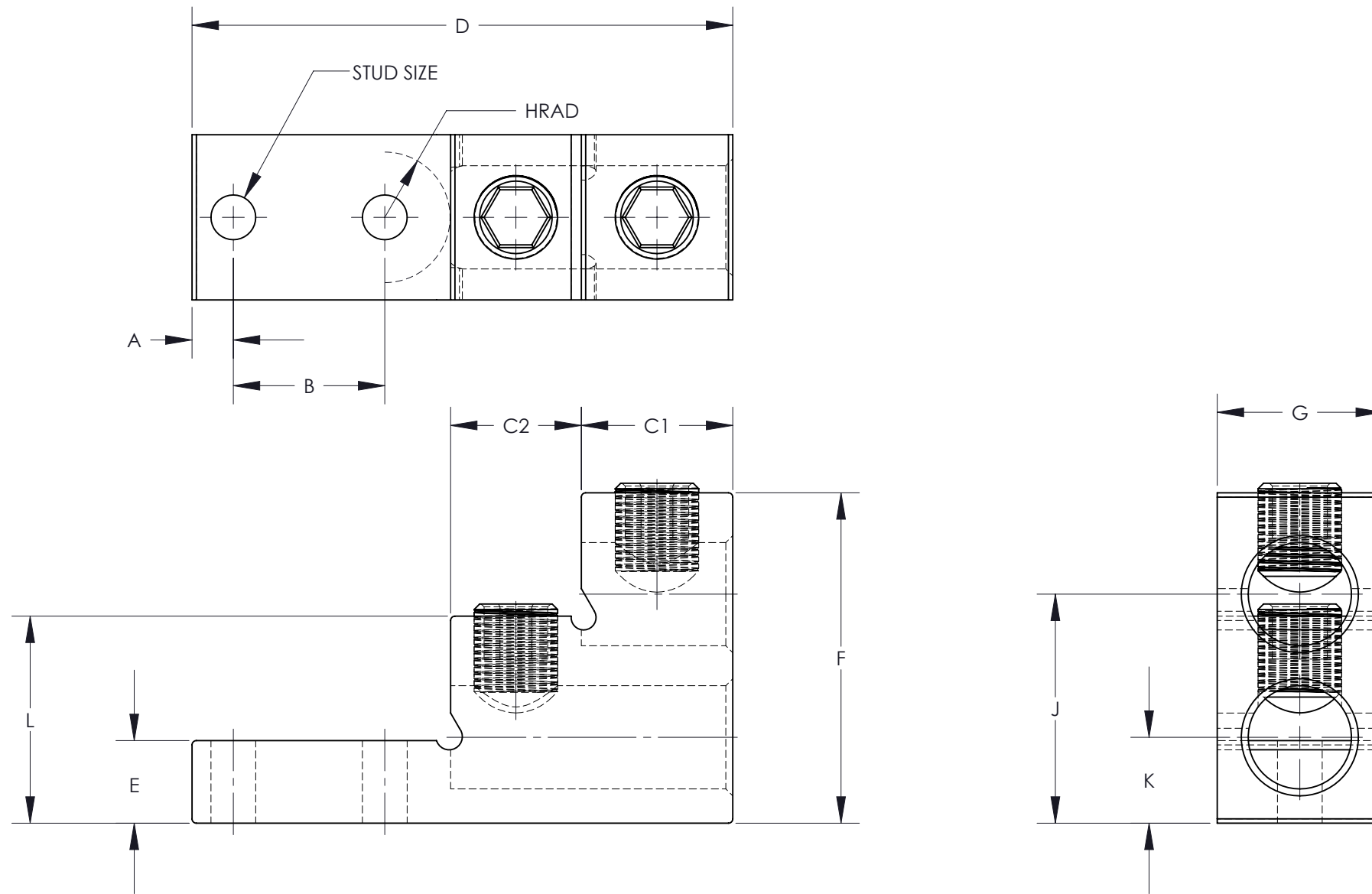


NOTES:

1. MATERIAL:
BODY - ALUMINUM, TIN PLATED
SCREW - ALUMINUM, TIN PLATED
2. UL LISTED & CSA CERTIFIED FOR USE UP TO 600V & TEMPERATURE RATED 90°C (AL9CU)
3. DUAL RATED FOR USE WITH COPPER OR ALUMINUM STRANDED CODE CONDUCTOR
4. THESE PARTS ARE RoHS COMPLIANT
5. USE OF OXIDE INHIBITING JOINT COMPOUND LIKE PANDUIT CMP-100 RECOMMENDED FOR PAD TO PAD AND CONDUCTOR SURFACES
6. SEE PACKAGING LABEL FOR TIGHTENING TORQUE INFORMATION
7. PKG QTY:
1=1



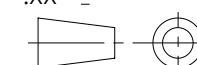
PART NUMBER	STUD SIZE	DIMENSIONS - IN [mm] +/- .02 [.5]												WIRE RANGE	HEX KEY*
		A	B	C1	C2	D	E	F	G	H	J	K	L		
LAM2SB600-38-1Y	3/8	.38 [9.5]	1.38 [35.1]	1.38 [35.1]	1.19 [30.2]	4.91 [124.7]	.75 [19.1]	3.00 [76.2]	1.50 [38.1]	.58 [14.7]	2.08 [52.8]	.78 [19.81]	1.88 [47.8]	600kcmil-2	3/8
LAM2SB750-38-1Y	3/8	.38 [9.5]	1.38 [35.1]	1.38 [35.1]	1.19 [30.2]	4.91 [124.7]	.75 [19.1]	3.00 [76.2]	1.50 [38.1]	.58 [14.7]	2.08 [52.8]	.78 [19.81]	1.88 [47.8]	750kcmil-1/0	3/8

* HEX SIZE MAY DIFFER FROM CHART. DIFFERENCE IN SIZE WILL NOT AFFECT FIT, FORM, OR FUNCTION OF PART

							TITLE LAM2SB SERIES ALUMINUM MECHANICAL LUGS CUSTOMER DRAWING	
							ITEM REVISION NAME N41559BA-C41559/04	
							DATASET FILE NAME C41559/04.SLDDRW	
							UNLESS OTHERWISE SPECIFIED, DIMENSIONAL TOLERANCES ARE: IN [mm] .X ± .XXX ± .XX ± ANGLES ±	
							THIRD ANGLE PROJECTION	
04	2/13	JHNU	JHNU	RGB	REVISED TITLE BLOCK		N41559BA-C41559	
REV	DATE	BY	CHK	APR	DESCRIPTION		ECN	
							DRAWN BY JHNU	
							DATE 2/06	
							CHK JHNU	
							SCALE NONE	
							DRAWING NUMBER C41559_04	
							SHEET 1 OF 1	
							SIZE B	



SEE NOTES



THIRD ANGLE PROJECTION