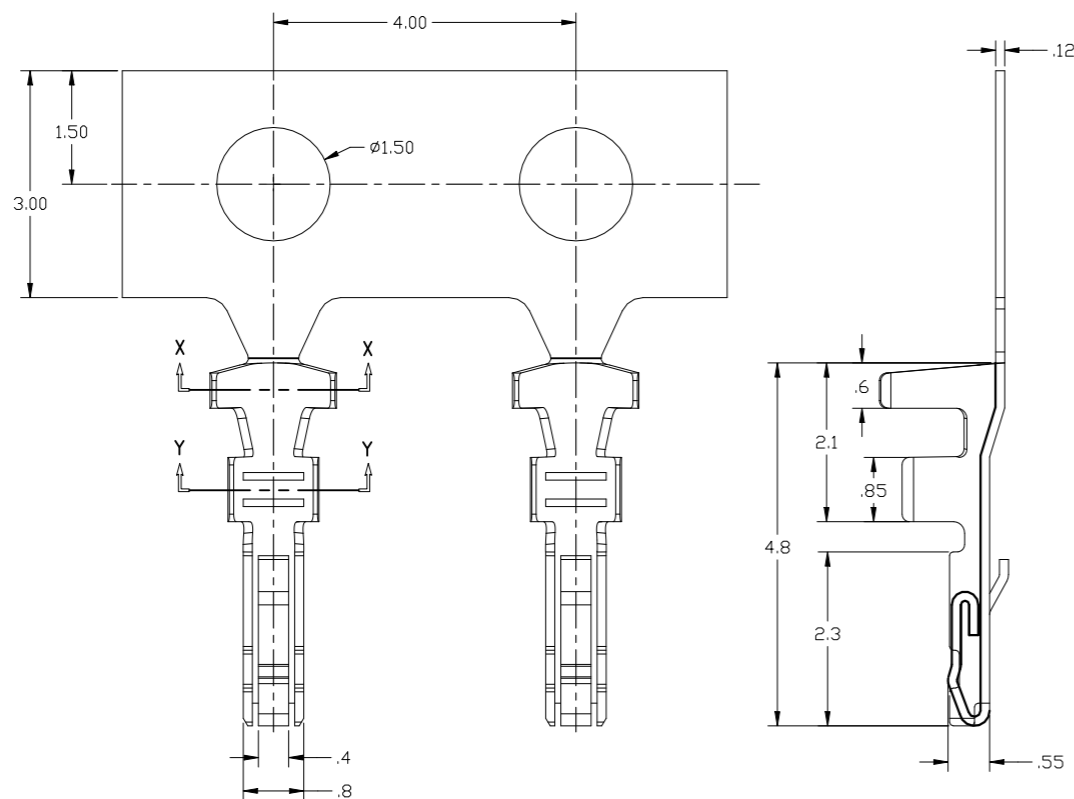
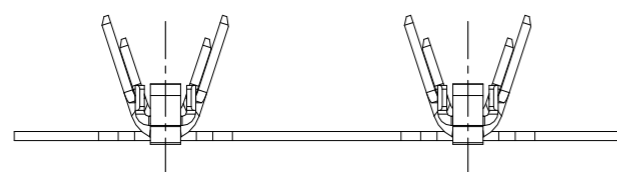
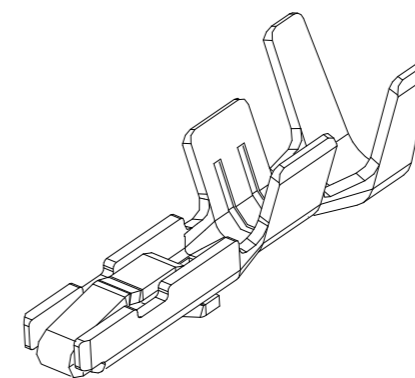


P	LTR	DESCRIPTION	DATE	DWN	APVD
	A	ECR-21-104664	12APR2021	T.Q	W.H

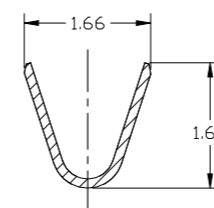


NOTES:

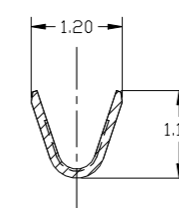
1. MATERIAL: COPPER ALLOY, THICKNESS 0.12 ± 0.01 .
2. PLATING:
TYPE A: PURE TIN, 40u" MIN
TYPE B: 0.5u" MIN GOLD FLASH ON CONTACT AREA
50u" MIN. NICKEL UNDERPLATING OVERALL.
3. WIRE RANGE: SUITABLE FOR AWG#30~#26.
4. INSULATION O.D: 0.80~1.0mm(MAX).
5. HOUSING P/N: X-2390144-X



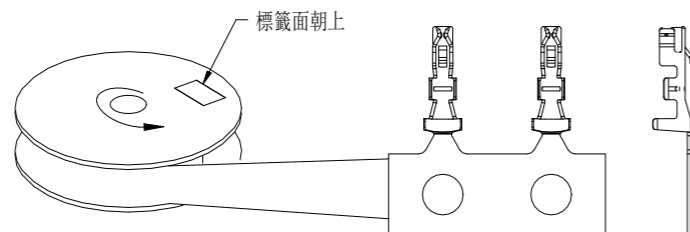
2390147-2	2390147-1
GOLD FLASH	PRE-TIN
PLATING SPEC	
PART NUMBER	



SECTION X-X



SECTION Y-Y

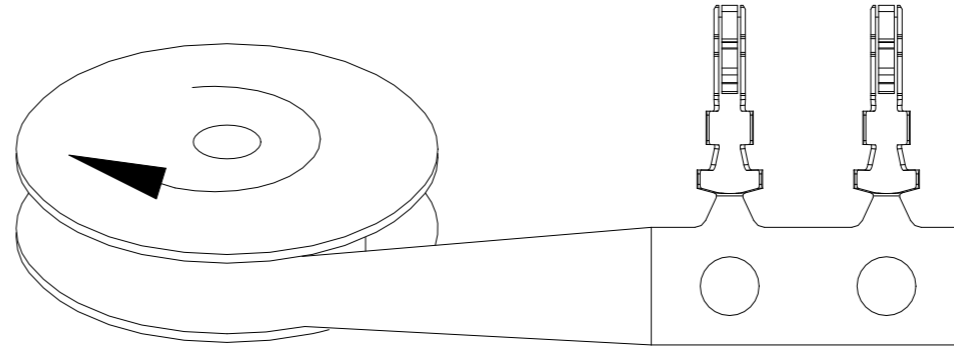
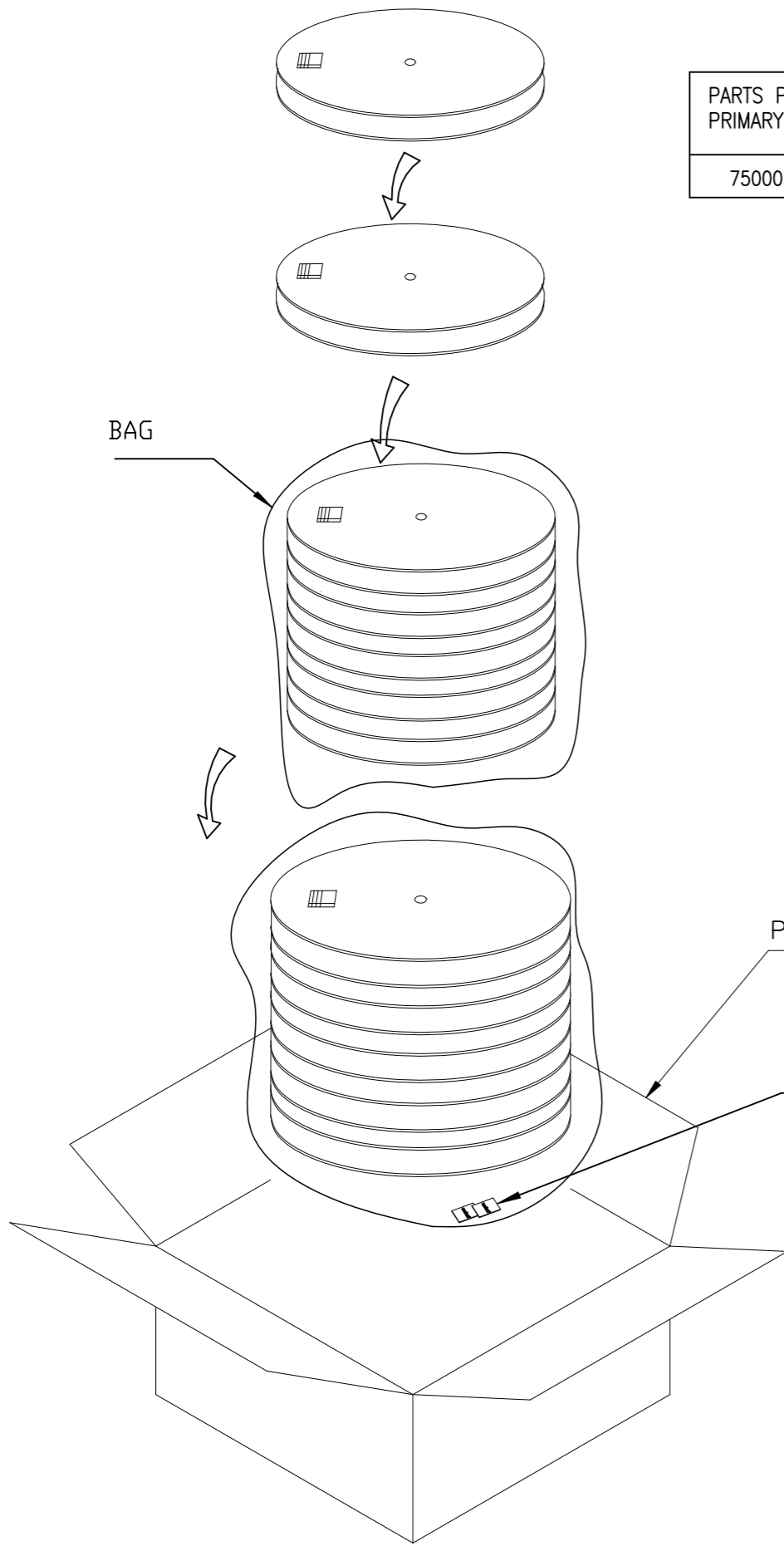


FEED OUT DIRECTION

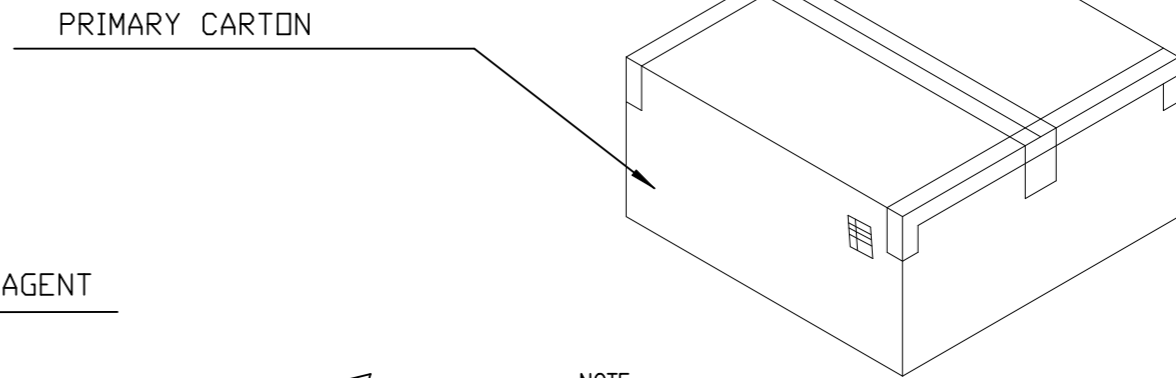
THIS DRAWING IS A CONTROLLED DOCUMENT.		DWN Tommy Qian 12APR2021	TE Connectivity		
DIMENSIONS: mm		CHK Niki Shi 12APR2021			
TOLERANCES UNLESS OTHERWISE SPECIFIED:		APVD Niki Shi 12APR2021	NAME		
0 PLC ± 0.5		PRODUCT SPEC	1.25mm PITCH WTB Conn. CABLE CONTACT		
1 PLC ± 0.25		APPLICATION SPEC	SIZE	CAGE CODE	DRAWING NO
2 PLC ± 0.15		—	—	—	—
3 PLC ± 0.1		—	—	—	—
4 PLC $\pm -$		—	—	—	—
ANGLES $\pm 2^\circ$		—	—	—	—
MATERIAL		FINISH	WEIGHT	RESTRICTED TO	
NOTE 1		NOTE 2	N/A	—	
—		—	A3	00779	C-2390147
—		—	CUSTOMER DRAWING		SCALE N/A
—		—	SHEET 1 OF 2		REV A

REVISIONS					
P	LTR	DESCRIPTION	DATE	DWN	APVD
	-	SEE SHEET 1	-	-	-

PARTS PER PRIMARY CARTON	PARTS PER REEL	TOTAL REELS PER PRIMARY CARTON
75000(PCS)	15000(PCS)	5



AFTER PLATING



- NOTE:
1. STAPLES SHOULD ONLY BE USED TO SET UP CARTON ALL CARTONS CLOSURES MUST BE DONE WITH TAPE.
 2. FILL PACKAGING REEL WITH THE QUANTITIES AS INDICATED IN THE CHART.

THIS DRAWING IS A CONTROLLED DOCUMENT.		DWN Tommy Qian 12APR2021	STE TE Connectivity		
DIMENSIONS: mm		CHK Niki Shi 12APR2021			
TOLERANCES UNLESS OTHERWISE SPECIFIED:		APVD Niki Shi 12APR2021	NAME		
0 PLC ± 0.5		PRODUCT SPEC	1.25mm PITCH WTB Conn. CABLE CONTACT		
1 PLC ± 0.25		APPLICATION SPEC	-		
2 PLC ± 0.15		WEIGHT	SIZE	CAGE CODE	DRAWING NO
3 PLC ± 0.1		NOTE 1	A3	00779	C-2390147
4 PLC ± -			CUSTOMER DRAWING	SCALE	SHEET
ANGLES ± 2°		NOTE 2	N/A	2 OF 2	A