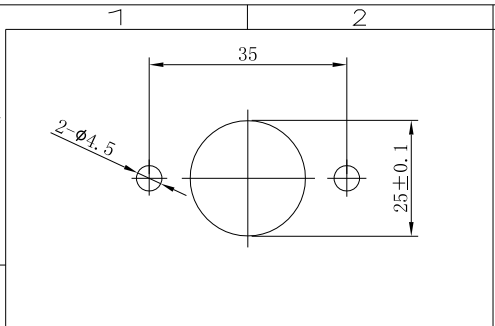
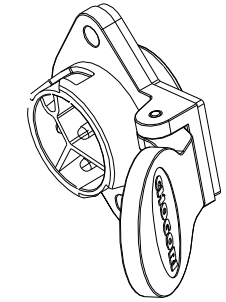
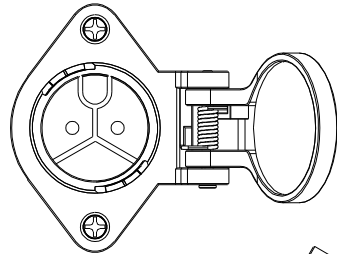


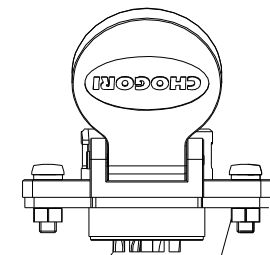
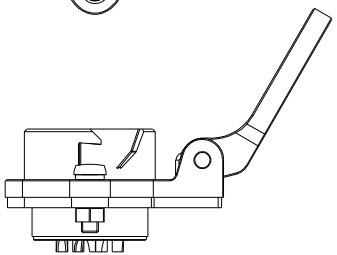
| REV. | ECN NO. | DESCRIPTION | SIGN | DATE |
|------|---------|-----------------|------|------------|
| C1 | N/A | INITIAL DRAWING | Liu | 2020/05/20 |



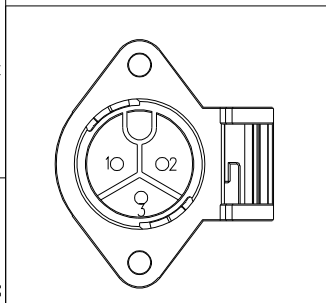
RECOMMENDED PANEL Cut-Out



22XXX536-0X
Pin Number



Connector Male Pin



3 Pin
P/N: 24003536-04
Pin Assignments Front View

- Specification:
- 1.Operation Temperature: -45°C~105°C.
 - 2.Insulation Resistance:100MΩ at DC500V.
 - 3.Contact Resistance:<10mΩ.
 - 4.Withstand Voltage: 2000V AC
 - 5.Operating Current:50A
 - 6.Operating Voltage: AC 300V
 - 7.Waterproof Rate:IP67 (Mated)
 - 8.Housing:Nylon, Black
 - 9.Male Pin:Copper Alloy, Gold Plated
 - 10.Gasket:Silicon Gray
 - 11.Torque Rate:0.8~1.0N •m
 - 12.RoHS Compliant.
 - 13.Mating Cap P/N: 806-00058-00

THIS INFORMATION IS CONFIDENTIAL AND IS DISCLOSED TO YOU ON CONDITION THAT NO FURTHER DISCLOSURE IS MADE BY YOU TO OTHER THAN CHOGORI PERSONNEL WITHOUT AUTHORIZATION FROM CHOGORI CORP.

| | | | | | | | | | | | |
|-----------|---|-------------|--|-------|---------|-------------|----------|-------------|-------|------------|------------|
| UNIT:mm | | DESCRIPTION | Large Series Push Lock Female socket With Male Pin | | PART NO | 24003536-04 | DRAWN BY | Liu | DATE | 2020/05/20 | |
| TOLERANCE | .X ±0.25 .XX ±0.15 .XXX ±0.05 ANGLES ±1° | SCALE | 1:1 | SHEET | 1 OF 1 | DWG NO | | CHECKED BY | Mo | DATE | 2020/05/20 |
| | | REV. | C1 | SIZE | A4 | CUSTOMER | | APPROVED BY | Adley | DATE | 2020/05/20 |
| | | | | | | | | | | | |

