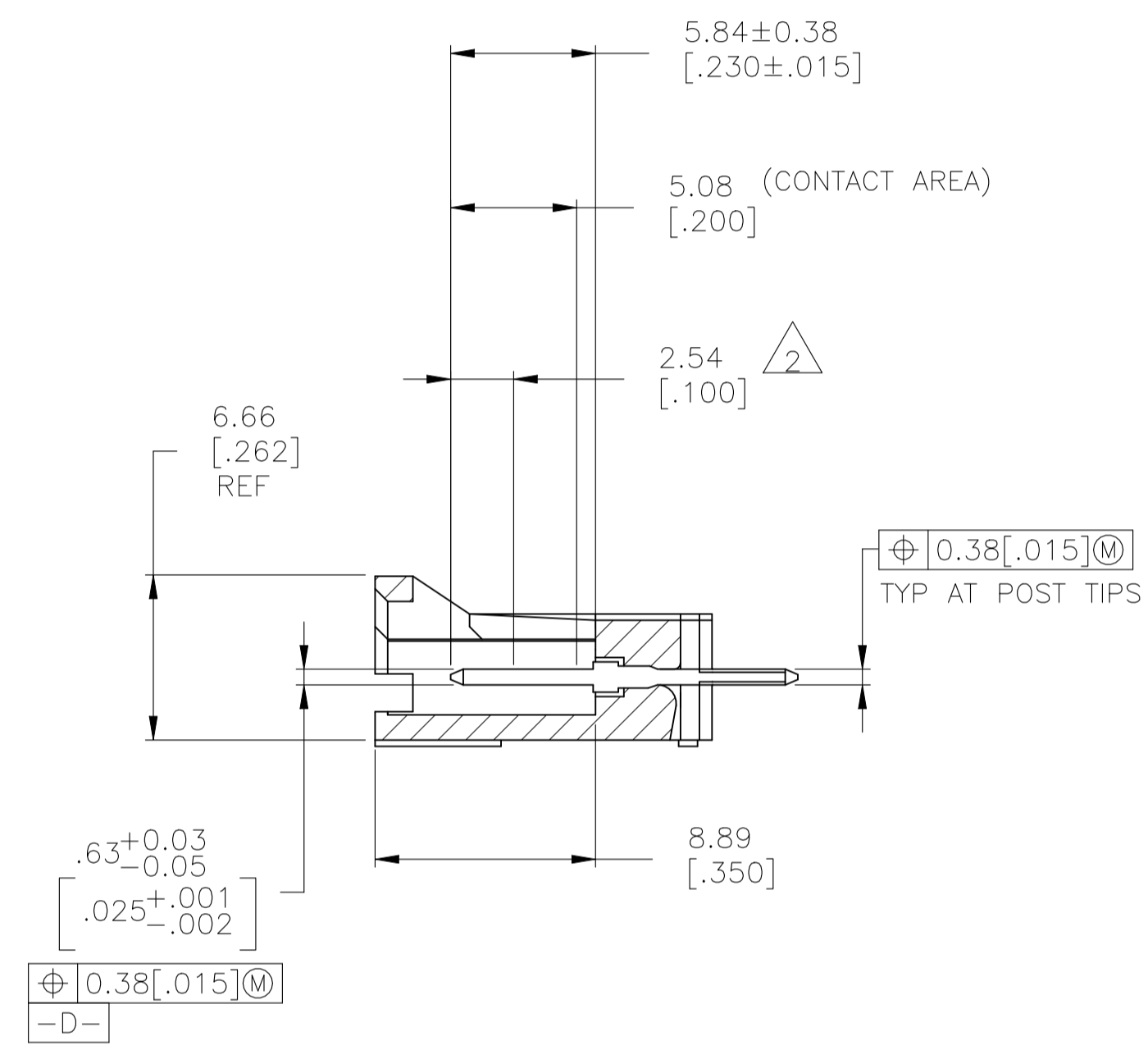
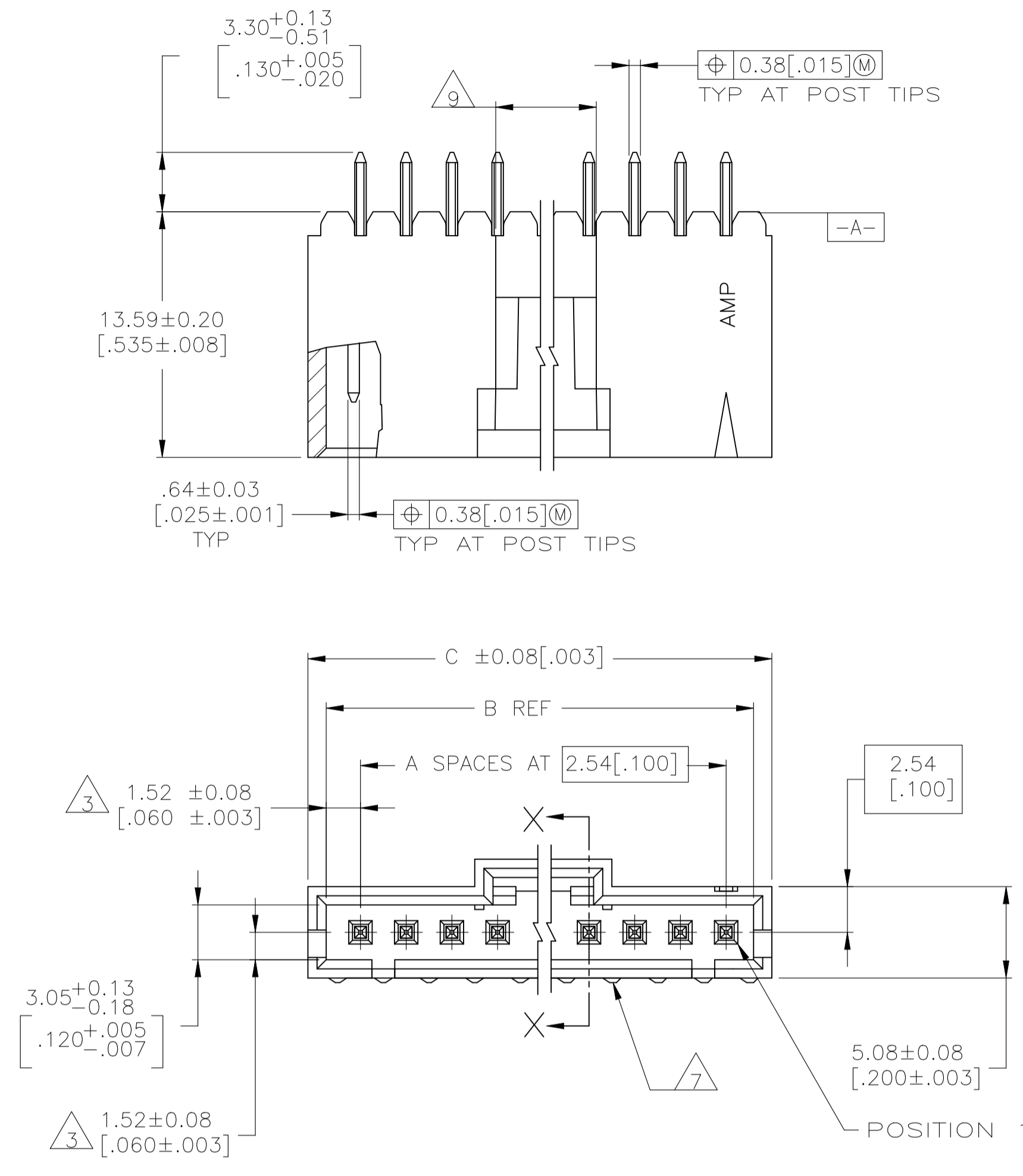
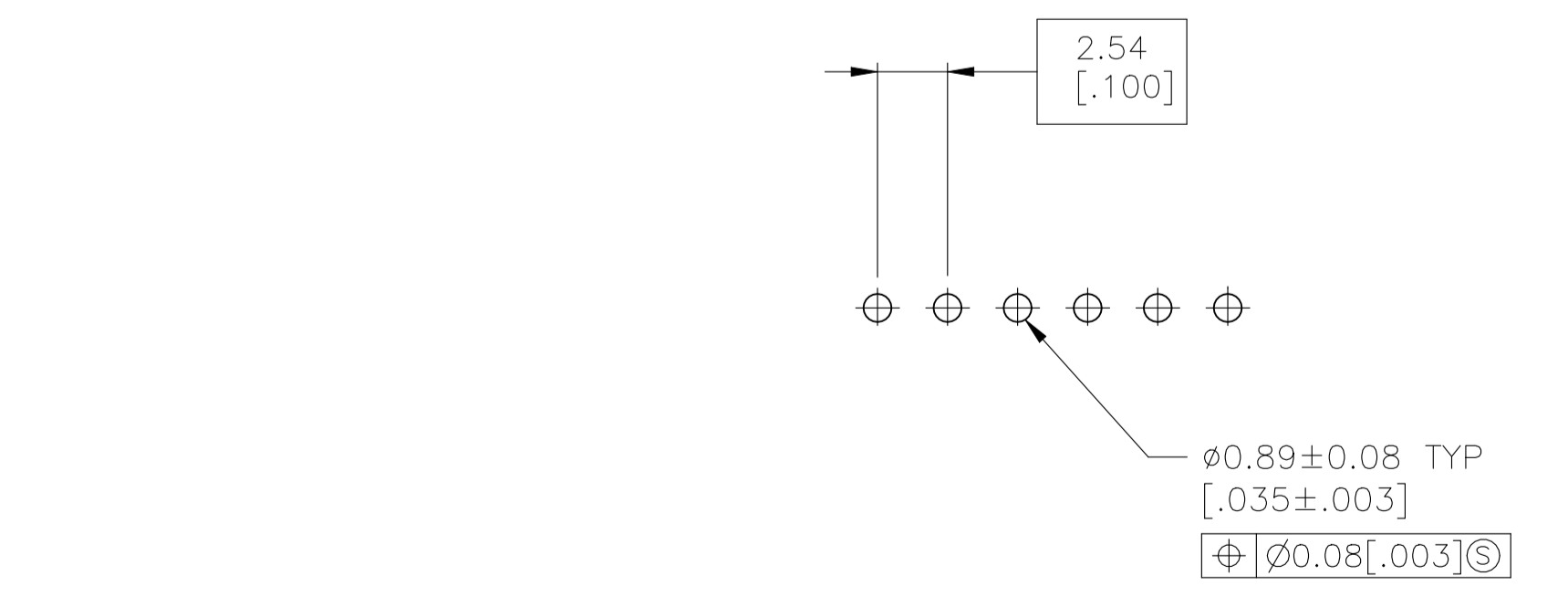


| REVISIONS |                           |           |    |       |  |
|-----------|---------------------------|-----------|----|-------|--|
| REV       | DESCRIPTION               | DATE      | BY | APP'D |  |
| D         | REVISED PER ECO-20-001912 | 03JUN2020 | SB | JO    |  |



SECTION X-X

- 1 FINISH: 0.00254[.000100] BRIGHT TIN-LEAD OVER 0.00127[.000050] NICKEL.
- 2 POINT OF MEASUREMENT FOR PLATING THICKNESS.
- 3 THE NOTED DIMENSIONS APPLY FROM THE BASIC DIMENSION CENTER LINE (NOT THE POST CENTER LINE) TO THE SURFACE INDICATED.
- 4 MATERIAL- HOUSING: LCP, COLOR-BLACK. POSTS: BRASS.
- 5 FINISH: 0.00254[.000100] MATTE TIN OVER 0.00127[.000050] NICKEL.
- 6 HIGH TEMPERATURE CONFIGURATION
- 7 STANDOFFS NOT PRESENT ON UNDER SIDE OF ASSEMBLY
- 8 OBSOLETE PARTS: OBSOLETE CIS STREAMLINING PER D.RENAUD/D.SINISI
- 9 0.25 [.010] RECESS PERMISSIBLE IN THIS AREA FOR MOLD SHUT OFF



RECOMMENDED HOLE LAYOUT

|   |          |        |                  |    |               |               |    |             |            |
|---|----------|--------|------------------|----|---------------|---------------|----|-------------|------------|
| 8 | OBSOLETE | 6 7    | 5                | 2  | 35.43 [1.395] | 35.56 [1.320] | 12 | 13          | 5-147574-2 |
| 8 | OBSOLETE | 6 7    | 5                | 12 | 35.43 [1.395] | 35.56 [1.320] | 12 | 13          | 5-147574-1 |
|   |          | 6      | 1                | 2  | 35.43 [1.395] | 35.56 [1.320] | 12 | 13          | 147574-2   |
| 8 | OBSOLETE | 6      | 1                | 12 | 35.43 [1.395] | 35.56 [1.320] | 12 | 13          | 147574-1   |
|   | REMARKS  | FINISH | POST NO. OMITTED |    | C             | B             | A  | NO. OF POSN | PART NO.   |

THIS DRAWING IS A CONTROLLED DOCUMENT.

|                        |  |                         |  |
|------------------------|--|-------------------------|--|
| DIMENSIONS: mm [NCHES] | TOLERANCES UNLESS OTHERWISE SPECIFIED: | DIN R BROWN 02-04-01    | TE Connectivity  |
| 0 PLC ± -              | 1 PLC ± -                              | CHK K WRIGHT 02-04-01   |  |
| 2 PLC ± 0.13[.005]     | 3 PLC ± -                              | APP'D K WRIGHT 02-04-01 | NAME   |
| 4 PLC ± -              | ANGLES ± -                             | PRODUCT SPEC            | HDR ASSY,AMPMODU MTE,VERTICAL SINGLE ROW,2.54[.100]CL,0.64[.025] SQPOSTS,-WITH LATCH |
| MATERIAL - 4           | FINISH SEE TABLE                       | APPLICATION SPEC        | SIZE CAGE CODE DRAWING NO  |
|                        |  | WEIGHT -                | A1 00779 C=147574  |
|                        |  | CUSTOMER DRAWING        | SCALE 4:1 SHEET 1 of 1 REV D   |