

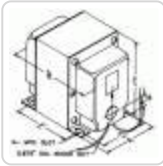


Quality Products. Service Excellence.

## D.C. Filter Chokes 193 Series

Enclosed & Potted Chassis Mount

### Features



- Enclosed, 4-hole mount chokes (some models also available epoxy potted in a black powder paint - drawn steel housing (see chart). Potted models mount with 1/4" - 20 hardware (included).
- Tolerance of 15% on both inductance & resistance.
- Inductances measured at rated D.C. current.
- Minimum 8" long leads.
- Units will exhibit less inductance at slightly higher currents or more at lower currents.
- Perfect for high voltage power supply filtering, case matches power transformers & tube audio output transformers.
- Units are vacuum impregnated with polyurethane varnish for quiet and long life operation
- For more sizes and voltages (open - bracket mount type) - link here to our **153-159 Series**.
- Operating temperature range is -40C to 65C
- Insulation class 105C
- Proper Henry testing requires an LCR meter in junction with a 25A power supply that does allow for DC bias as well a higher applied AC drive voltage to meet the test specifications.

Part No.	Style	Inductance (Henrys)	D.C. Current (ma.)	Resistance (Ohms)	Maximum Operating (Volts D.C.)	Weight (lbs.)	Dimension Ref.
193T	Enclosed	0.05H	2000	0.7	300	2.5	X6
193V	Enclosed	0.15H	3000	1	300	9	X14
193U	Enclosed	0.2H	2000	1.7	300	6	X12
193R	Enclosed	0.3H	1000	3.5	1000	4.5	X10
193S	Enclosed	1.0H	1000	5.75	1000	8	X13
193K	Enclosed	2.6H	300	21	800	3.25	X8
193N	Enclosed	3H	500	35	600	5	X11
193NP	Potted	3H	500	36	800	7	P1
193H	Enclosed	5H	200	65	600	2.5	X6
193L	Enclosed	5H	300	57	800	5.5	X11
193LP	Potted	5H	300	55	800	7.5	P1
193P	Enclosed	5H	500	26	800	10.75	X14
193D	Enclosed	8H	150	75	600	3.25	X8
193G	Enclosed	10H	150	102	800	4.25	X17
193GP	Potted	10H	150	103	800	6	P1
193J	Enclosed	10H	200	82	800	5.5	X11

Part No.	Style	Inductance (Henrys)	D.C. Current (ma.)	Resistance (Ohms)	Maximum Operating (Volts D.C.)	Weight (lbs.)	Dimension Ref.
193JP	Potted	10H	200	79	800	7.5	P1
193M	Enclosed	10H	300	63	800	10.5	X14
193MP	Potted	10H	300	63	800	10.5	P1
193Q	Enclosed	10H	500	53	1000	21	X16
193B	Enclosed	12H	100	155	600	2.5	X6
193C	Enclosed	20H	100	181	600	3.25	X7
193CP	Potted	20H	100	184	800	5	P1
193A	Enclosed	200H	30	2000	600	3	X7

## Mechanical Data

Mtg. Style	Dimensions					G-Mtg. Slot
	A	B	C	D	E	
P1	3.31	3.88	4.25	-	-	-
X6	2.50	2.75	3.06	2.00	1.69	.203 x .38
X7	2.50	2.94	3.06	2.00	1.94	.203 x .38
X8	2.50	3.25	3.06	2.00	2.19	.203 x .38
X10	3.13	3.50	3.81	2.50	2.19	.203 x .38
X11	3.13	3.75	3.81	2.50	2.44	.203 x .38
X12	3.13	4.25	3.81	2.50	2.94	.203 x .38
X13	3.75	4.00	4.56	3.00	2.81	.203 x .38
X14	3.75	4.50	4.56	3.00	3.31	.203 x .38
X16	3.75	5.50	4.56	3.00	4.31	.203 x .38
X17	3.13	3.25	3.81	2.50	1.94	.203 x .38

Tags: **choke, DC, high voltage, power supply, filter, enclosed, potted, inductance**

*Data subject to change without notice*

© 2023. Hammond Manufacturing Ltd. All rights reserved.