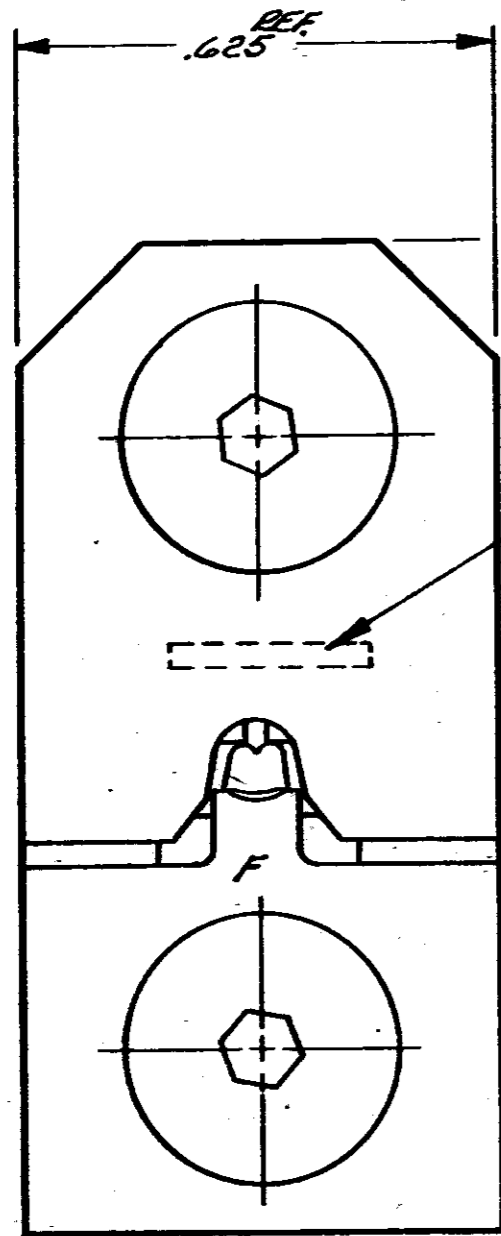
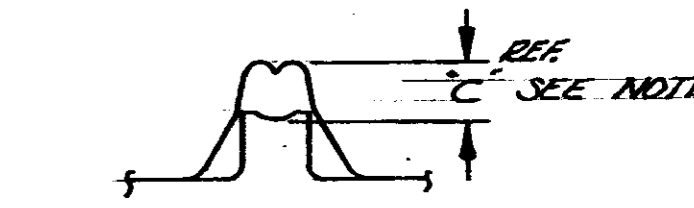
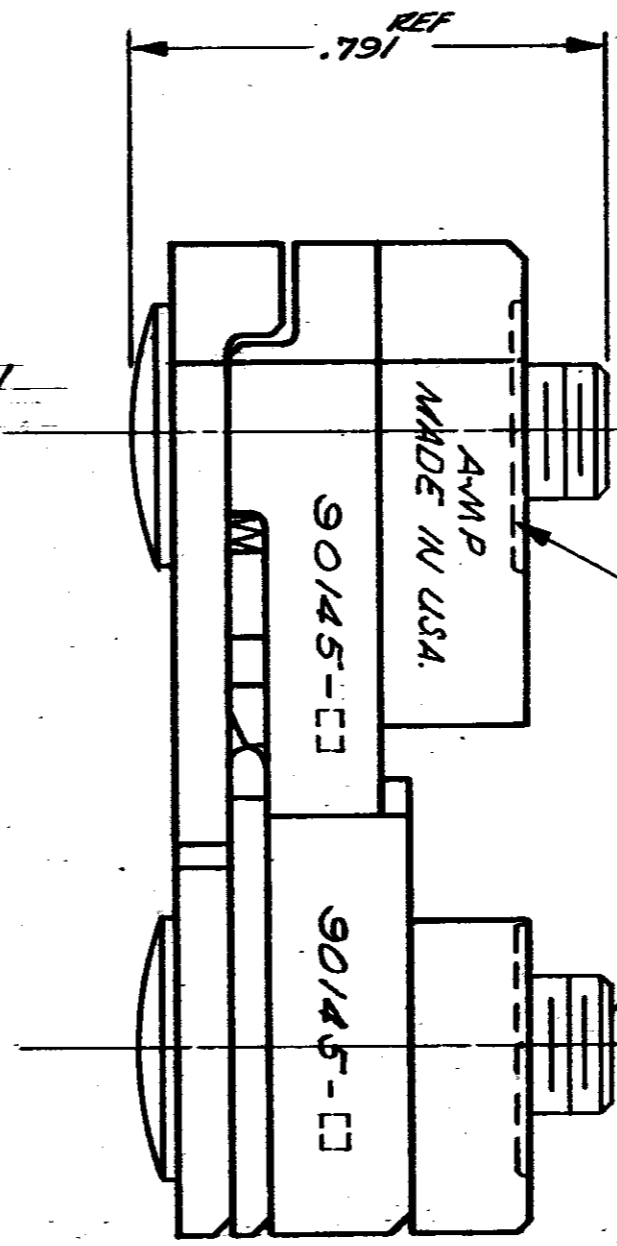


DIE No	"C"	TERM. C.H.	"A"
90145-1	.092	.094 ±.003	14-12
90145-2	.084	.086 ±.003	16

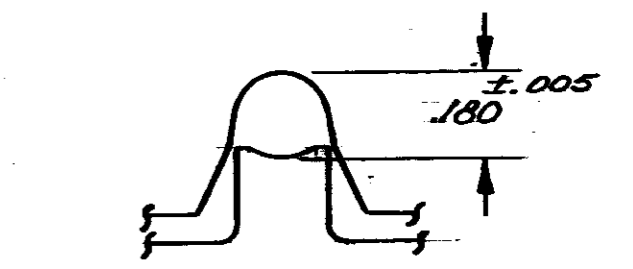


DATA SHOWN IN COLUMN "A"

REF. 1.312



DIE - WIRE CRIMP



DIE - INSULATION CRIMP

INACTIVE, REFER TO IS. SHEET 7175

INACTIVE  
11/8/77

DIMENSIONS IN INCHES. DO NOT SCALE PRINT

1. GAGE DIMENSIONS APPLY WHEN DIES ARE BOTTOMED BUT NOT UNDER PRESSURE
2. FOR REPLACEMENT OF PARTS OTHER THAN SCREWS & RETAINING RINGS, DIES SHOULD BE RETURNED TO AMP INC. HBG. PENNA.
3. FOR TOOL USAGE SEE INSTRUCTION SHEET I.S. 7175
4. DIE CAN BE CHECKED BY MEASURING TERM. CH. AS SHOWN IN CHART.

REV	DESCRIPTION	DATE	BY	CHK
1	90145-1			
2	90145-2			

QTY	UNIT	NUMBER	NAME	REMARKS
2	#	F21046-3	RING-RETAINING	
2	A	306131-9	SCREW-SPECIAL	

©1965 BY AMP INCORPORATED. ALL RIGHTS RESERVED.  
AMP PRODUCTS COVERED BY PATENTS AND/OR PATENTS PENDING.

DR. B. LUCI 2-29-75  
MATERIAL AND FINISH: STEEL: BLK. OXIDE  
WEIGHT: APPROX. 3oz.  
CLASS: AMP  
WIRE - RANGE - INSULATION: -H- -H-  
TYPE: AMP  
TOLERANCE EXCEPT AS NOTED: ±.015 ±1°  
SCALE: 4:1  
LOC: R B NO: 9014  
NAME: DIE ASSEMBLY