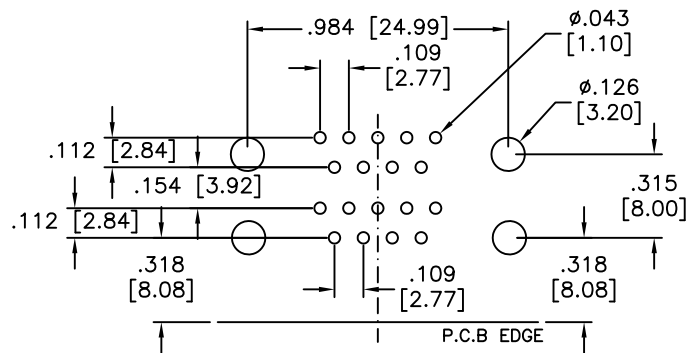
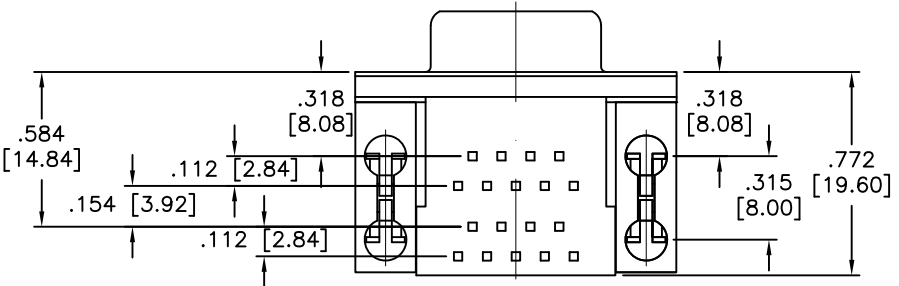
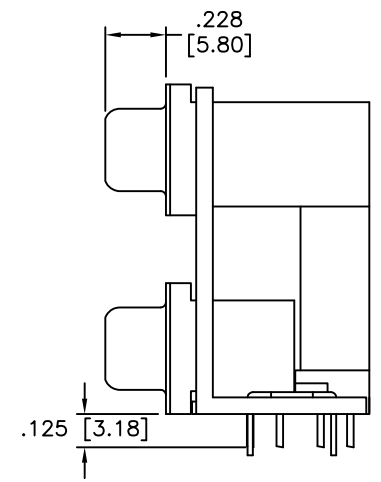
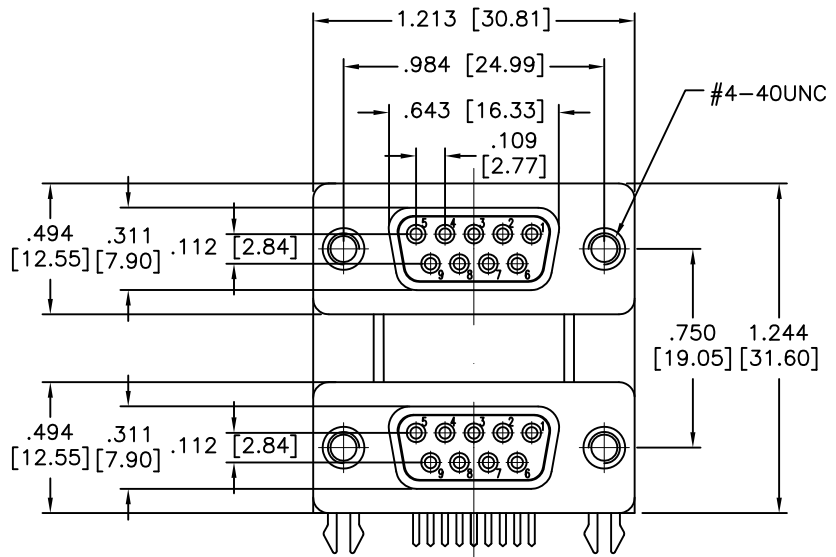


Rev	AWO #	Description	Date	Appr
-		RELEASED	05/31/12	
A		UPDATE DIM.	1/23/18	AY/MY

APPROVED: _____
 DATE: _____ TITLE: _____



RECOMMENDED PCB LAYOUT

SPECIFICATIONS:

Material:
 Insulator: PBT, rated UL 94V-0
 Insulator color: Black
 Contacts: Copper Alloy
 Shell: SPCC, Nickel plated
 Boardlock: Copper Alloy, Tin, plated
 Bracket: Zinc Alloy, Nickel plated
Plating:
 Gold over Nickel underplate on contact area,
 Tin over Nickel underplate on solder tails
Electrical:
 Voltage: 250 VAC max
 Current rating: 3 Amp per Contact
 Contact resistance: 25 mohms max
 Insulation resistance: 5,000 Mohms min
 Dielectric withstanding voltage: 1000 VAC for 1 minute
Temperature Rating:
 Operating temperature: -55°C to +85°C

Environmental:
 Lead free, RoHS compliant



UNLESS OTHERWISE SPECIFIED
 ALL DIMENSIONS ARE INCHES [MM]
 TOLERANCES: EXCEPT AS NOTED

INCHES		HOLES	
.X	± .10	Ø.X	± .10
.XX	± .020	Ø.XX	± .015
.XXX	± .015	Ø.XXX	± .010

APPROVALS		DATE
DRAWN	TW	05/31/12
CHECKED	AY	05/31/12
APPROVED		

ADAM TECH INTERCONNECTS 909 Rahway Avenue,
 Union, NJ 07083
 Phone: 908-687-5000
 Fax: 908-687-5710

TITLE: DUAL PORT D-SUB, RIGHT ANGLE,
 FEMALE 9 PIN / FEMALE 9 PIN, SEL-GOLD PLATED

SIZE X	PART NO. DPD-09-00-B3	REV. A
REF: S00027T	SCALE: NTS	SHEET 1 OF 1

6 5 4 3 2 1

D

D

C

C

B

B

A

A

6 5 4 3 2 1