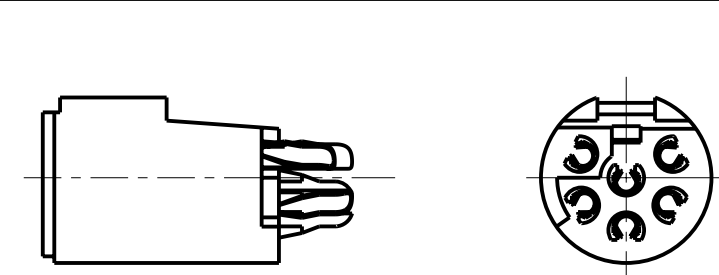
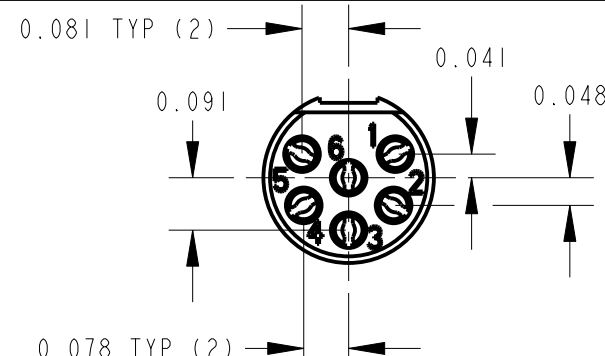
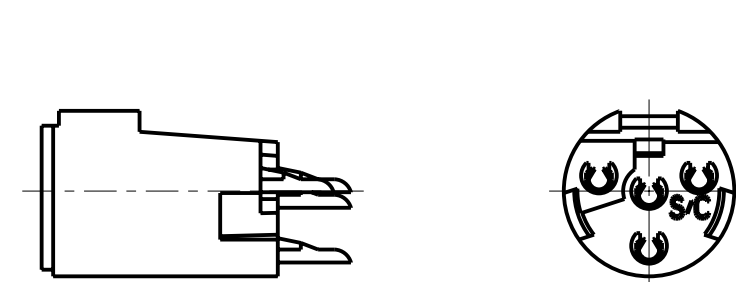
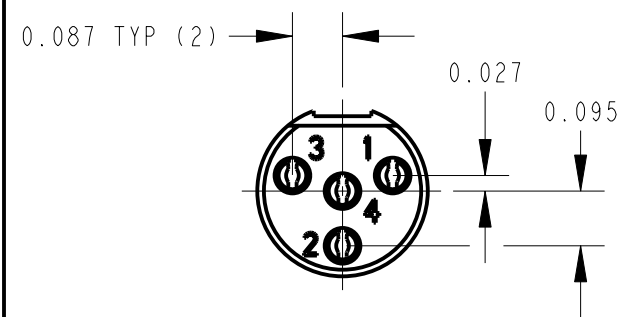


TQG3F

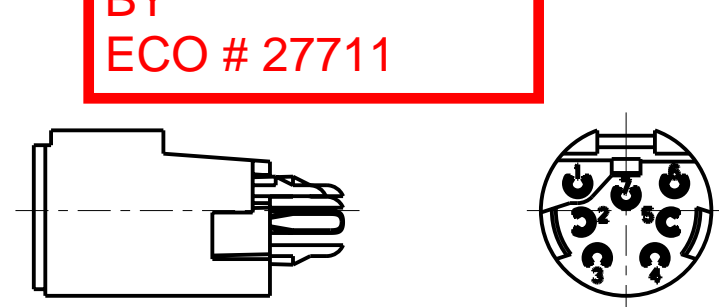
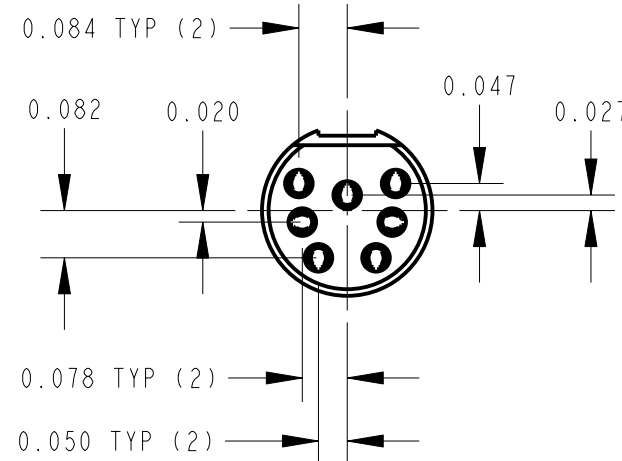


TQG6F

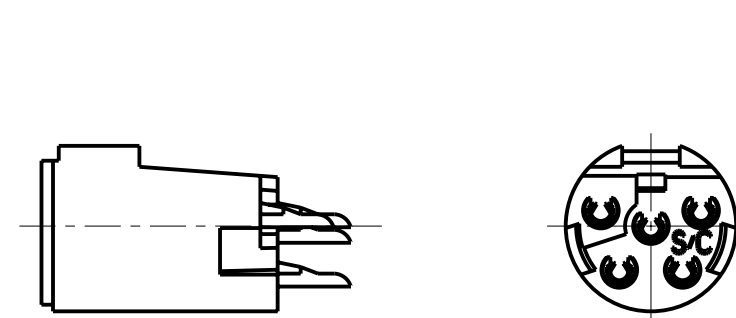
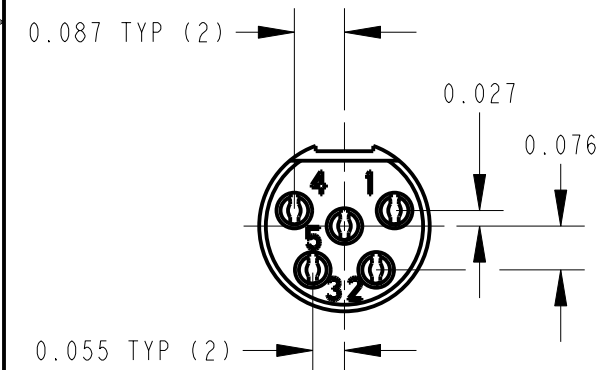
SUPERSEDED
BY
ECO # 27711



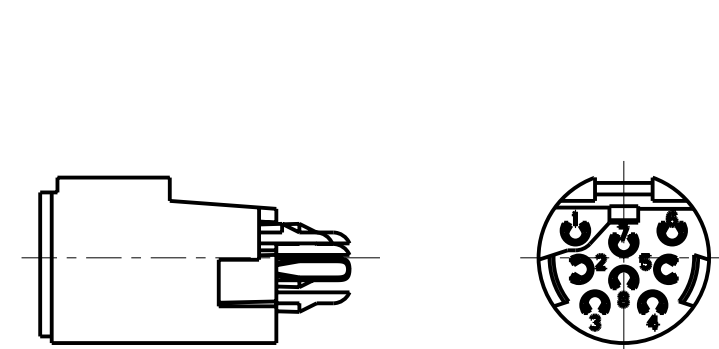
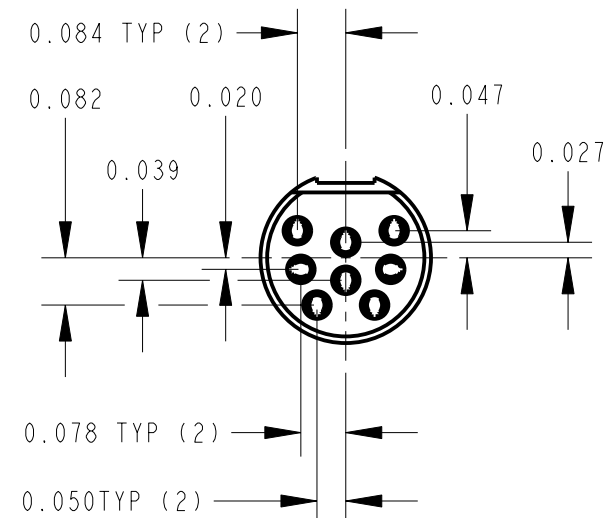
TQG4F



TQG7F



TQG5F



TQG8F

CUSTOMER DRAWING

NOTES:

1. ALL DIMENSIONS ARE FOR REFERENCE.
2. MATERIALS:
CONTACTS - COPPER ALLOY, SILVER PLATED
ADD "AU" SUFFIX FOR GOLD PLATED CONTACTS
INSERT - THERMOPLASTIC, BLACK
3. THESE PRODUCTS ARE RoHS COMPLIANT.

REV	ECO NUMBER	DATE	BY	APVD
C	ECO #25511	1-9-06	TJK	TJK
B	ECO #19704	3-24-95	RC	GHJ
A	CAD REDRAW ECO #19163	8-8-94	WJS	GHJ

★ STAR SYMBOL DENOTES CRITICAL DIMENSION

UNLESS OTHERWISE SPECIFIED

1. ALL DIMENSIONS IN INCHES
- TWO PLACE DECIMALS ±0.01
- THREE PLACE DECIMALS ±0.005
- ANGLES ±1°
- ALL DIA. CONCENTRIC WITHIN 0.005 T.I.R.
2. FEATURES ON THE SAME CENTERLINE MUST BE ALIGNED WITHIN ±0.002
3. REMOVE ALL BURRS

DO NOT SCALE DRAWING

THIS DRAWING DESCRIBES A DESIGN CONSIDERED PROPRIETARY IN NATURE, DEVELOPED AND MANUFACTURED BY SWITCHCRAFT INC. AND IS RELEASED ON A CONFIDENTIAL BASIS FOR IDENTIFICATION PURPOSES ONLY.			
SIZE	WIDTH	MULT	LBS/M
FINISH		MATERIAL	
SPEC No.		SPEC No.	
FIRST USED ON		SCALE	
		3:1	
DATE DRAWN	BY	CHKD	APVD
8-Aug-94	WJS	WJS 9-8-94	GHJ 9-8-94
NAME			PART No.
FEMALE TINI-0G INSERT, RoHS			TQG_F SERIES
			REV
			C

