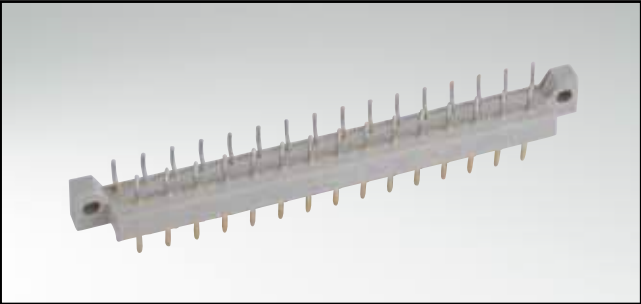


CONNECTOR ACCORDING TO DIN 41617

Male connector – angled – 13, 21 and 31 positions

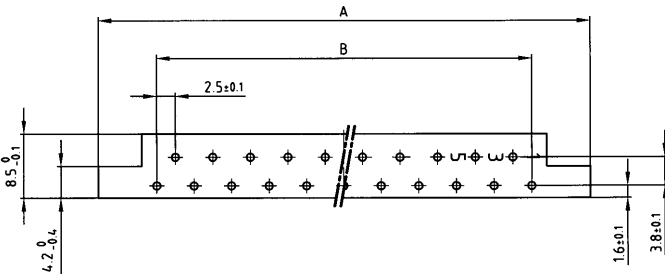


RoHS compliant

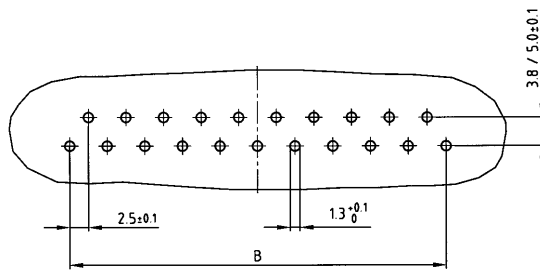
DESCRIPTION

- Solder pin
- Contact plating
 - standard quality classes 3 and 2
 - quality class 1 on request (*)
 - hard silver plated
- Standard insulator

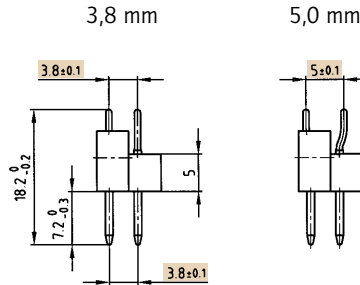
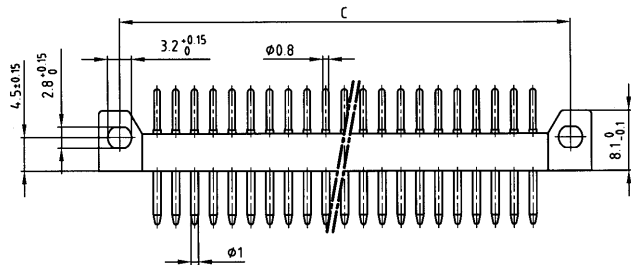
PRODUCT DRAWING



PCB-hole pattern



Contact spacing



| No. of Pos. | A ±0.2 | B ±0.1 | C ±0.1 |
|-------------|--------|-----------|--------|
| 13 | 45.6 | 12x2.5=30 | 40 |
| 21 | 65.6 | 20x2.5=50 | 60 |
| 31 | 89.6 | 30x2.5=75 | 85 |

ORDER DATA

(Dim. = mm)

| No. of Pos. | Contact spacing | hard silver plated | Quality class 3 | Quality class 2 | Quality class 1 * |
|-------------|-----------------|--------------------|-----------------|-----------------|-------------------|
| 13 | 3.8 mm | 101 E 10049 X | 101 A 10049 X | 101 B 10049 X | 101 C 10049 X |
| 13 | 5.0 mm | 101 E 10169 X | 101 A 10169 X | 101 B 10169 X | 101 C 10169 X |
| 21 | 3.8 mm | 101 E 10059 X | 101 A 10059 X | 101 B 10059 X | 101 C 10059 X |
| 21 | 5.0 mm | 101 E 10179 X | 101 A 10179 X | 101 B 10179 X | 101 C 10179 X |
| 31 | 3.8 mm | 101 E 10069 X | 101 A 10069 X | 101 B 10069 X | 101 C 10069 X |
| 31 | 5.0 mm | 101 E 10189 X | 101 A 10189 X | 101 B 10189 X | 101 C 10189 X |