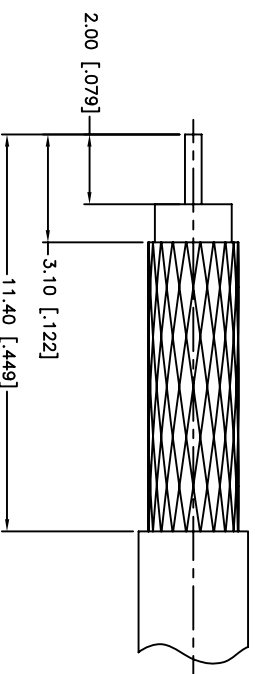
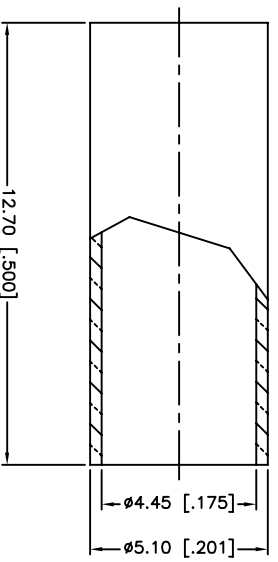
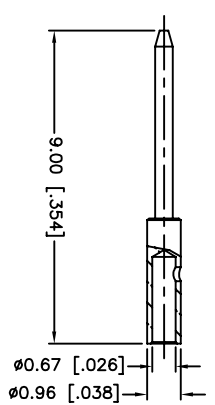
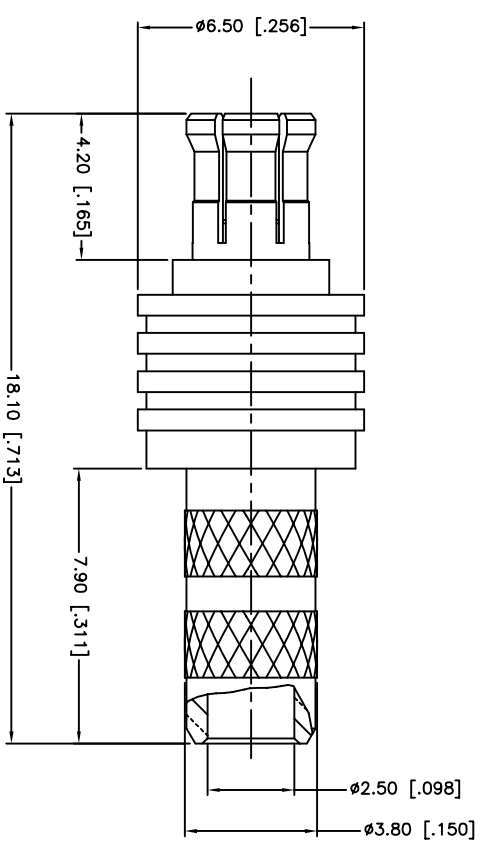


REV.	DATE	ECR NO.	DESCRIPTION
NC	05/28/10	XXXXXX	INITIAL RELEASE
A	07/01/10	2068	CHANGE THE PLATING TO GOLD



RECOMMENDED
CABLE STRIPPING DIMENSIONS



NOTE:
1. CONTACT PIN TO SOLDER
2. CRIMP FERRULE
HEX CRIMP SIZE .178"

DESCRIPTION	MATERIAL	FINISH	QTY
5 FERRULE	BRASS	GOLD	1
4 HOUSING	BRASS	GOLD	1
3 CONTACT PIN	BRASS	GOLD	1
2 INSULATOR	PTFE	NATURAL	1
1 BODY	BERYLLIUM COPPER	GOLD	1

UNLESS OTHERWISE SPECIFIED DIMENSIONS ARE IN INCHES AND FOR CUSTOMER REFERENCE ONLY.
UNLESS OTHERWISE SPECIFIED TOLERANCES FOR MILLIMETERS ARE:
0.5 - 8mm ± 0.20mm
8 - 30mm ± 0.40mm
30 - 120mm ± 0.50mm
UNLESS OTHERWISE SPECIFIED TOLERANCES FOR INCHES ARE:
.020 - .315 = ± 0.007"
.315 - 1.180 = ± 0.015"
1.180 - 4.724 = ± 0.020"
DO NOT SCALE DRAWING

APPROVALS	DATE
DRAWN F. WANG	07/01/10
CHECKED	
ISSUED	
SHEET 1 OF 1	

Amphenol Connex

PART DESCRIPTION
MCX CRIMP PLUG(FOR PIC CABLE #V73263)

PART NO.
252207

CAD FILE C:/CONNEX/252207.DWG
DWG. NO. 252207.DWG
REV. A SIZE A SCALE NA